

Converting Colors

HunterLab(60.4060, 0.2036,
12.7955)

Have a look what the booklet for
HunterLab(60.4060, 0.2036,
12.7955) contains.

HunterLab(60.5134, -0.0175, 12.9785)	3
<i>Conversions</i>	4
<i>Details</i>	6
<i>Harmonies</i>	12
<i>Previews</i>	24
<i>Color Blindness Simulation</i>	28
<i>CSS Examples</i>	31

Color

**HunterLab(60.5134, -0.0175,
12.9785)**

Conversions

Conversions Part 1

Format	Color
Hex	B3A08C
RGB	179, 160, 140
RGB Percent	70%, 63%, 55%
CMY	0.2980, 0.3725, 0.4510
CMYK	0.00, 0.11, 0.22, 0.30
HSL	31°, 20%, 63%
HSV	31°, 22%, 70%
XYZ	35.8948, 36.6187, 29.9871
YIQ	163.4010, 17.7440, -2.1920

Conversions

Conversions Part 2

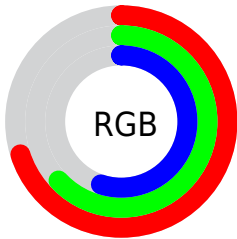
Format	Color
R_{YB}	177, 179, 140
Decimal	11772044
CIE _{Lab}	66.99, 3.69, 12.96
CIE _{LCh}	67, 13.480, 74.099
Yxy	36.6204, 0.3502, 0.3573
Android (android.graphics.Color)	4289962124 (0xFFB3A08C)
YUV	163.4010, -11.5367, 13.6803
Hunter-Lab	60.5134, -0.0175, 12.9785

Details

The HunterLab color $60.5134, -0.0175, 12.9785$ is a light color, and the websafe version is hex 999999 . A complement of this color would be $57.9874, -4.9757, -7.9615$, and the grayscale version is $60.7251, -3.2401, 3.2993$.

A 20% lighter version of the original color is $83.7604, -1.0303, 15.4667$, and $40.1386, 0.5475, 10.4547$ is the 20% darker color. If you saturate the color by 10%, you get $57.6339, 2.0344, 16.5741$, and if you desaturate by 10%, it is $63.4996, -1.8029, 8.9349$.

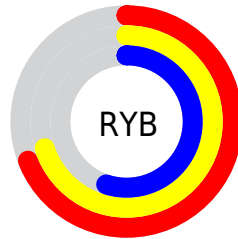
Distribution



Red (70%)

Green (63%)

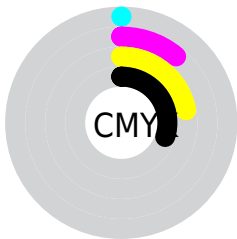
Blue (55%)



Red (69%)

Yellow (70%)

Blue (55%)

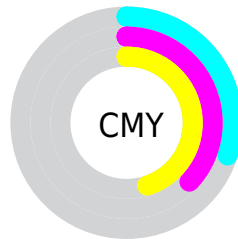


Cyan (0%)

Magenta (11%)

Yellow (22%)

Black (30%)



Cyan (30%)

Magenta (37%)

Yellow (45%)

Brightness & Saturation Gradients

These gradients show how the HunterLab color 60.5134, -0.0175, 12.9785 changes by changing the brightness by 10 percent. The first figure shows a shift by +10% for each color and the second figure -10%.

Similar to the brightness gradients but the following saturation gradients show a change of the HunterLab color 60.5134, -0.0175, 12.9785 by changing the saturation by 10% instead.

■ 60.5134, -0.0175,
12.9785

■ 60.5134, -0.0175,
12.9785

■ 182.1164, -5.1134,
24.5868

■ 49.9136, 0.3513,
11.6844

■ 83.6591, -0.8965,
15.5400

■ 40.0160, 0.6709,
10.3687

■ 96.1347, -1.3962,
16.8165

■ 30.8759, 0.9331,
9.0185

■ 109.1753, -1.9331,
18.0950

■ 22.5623, 1.1295,
7.6118

■ 122.7574, -2.5053,
19.3780

■ 15.1674, 1.2473,
6.1105

■ 136.8602, -3.1109,
20.6675

■ 8.7976, 1.3593,
6.1583

151.4652, -3.7483,

0.0000, NaN, NaN

21.9647

0.0000, NaN, NaN

166.5557, -4.4162,
23.2709

0.0000, NaN, NaN

■ 60.5134, -0.0175,
12.9785

■ 60.5134, -0.0175,
12.9785

■ 57.6339, 2.0344,
16.5741

■ 63.4996, -1.8029,
8.9349

■ 54.8657, 4.3751,
19.6738

■ 66.5805, -3.3340,
4.4833

■ 52.2194, 7.0157,
22.2317

■ 69.7502, -4.6313,
-0.3367

■ 49.7051, 9.9640,
24.2023

■ 73.0023, -5.7128,
-5.4900

■ 47.3329, 13.2185,
25.5464

■ 76.3308, -6.5960,
-10.9457

■ 45.1127, 16.7650,
26.2390

■ 79.7306, -7.2970,
-16.6760

■ 43.0534, 20.5699,
26.2823

■ 82.7863, -10.1024,
-16.9207

■ 41.4796, 23.8111,
25.9764

■ 85.5926, -14.5052,
-13.0469

■ 88.4471, -18.8535,
-9.2491

Harmonies

Analogous

The Analogous color harmony consists of three colors that are next to each other on the color wheel.



60.5148, 5.3304, 10.4846



60.5134, -0.0175, 12.9785



60.5148, -6.0336, 13.0536

Triad

The Triadic color harmony groups three colors that are evenly spaced from another and form a triangle on the color wheel.



60.5148, -0.0194, 12.9794



60.5148, -14.0825, 0.5422



60.5148, 5.0584, -5.1833

Complementary

The Complementary color scheme is a pair of colors which are on the opposite of each other on the color wheel.



60.5134, -0.0175, 12.9785



57.9874, -4.9757, -7.9615

Split Complementary

Split-complementary colors differ from the complementary color scheme. The scheme consists of three colors, the original color and two neighbors of the complement color.



60.5148, -0.3788, -8.4224



60.5134, -0.0175, 12.9785



60.5148, -11.3436, -4.9041

Square

The Square scheme is like the rectangle color scheme, but the four colors are evenly spaced on the color wheel.



60.5148, -0.0194, 12.9794



60.5148, -13.9948, 6.2415



60.5148, -6.3793, -8.3155



60.5148, 8.3395, 0.1904

Rectangle

The Rectangle color scheme consists of four colors that form a rectangle on the color wheel.



60.5134, -0.0175, 12.9785



60.5148, -9.6025, 11.7419



60.5148, -6.3793, -8.3155



60.5148, 3.4131, -6.5803

Sweetspot

The Sweet Spot groups the original color and five complimentary colors.



60.5148, -0.0194, 12.9794



86.8894, -3.4099, 9.2404



55.5525, 12.8994, -0.7942



40.7843, -1.5478, 4.5132



95.4677, -5.0939, 5.1869



42.2927, -2.2566, 2.2978

Same Dimension

The Same Dimension uses a secret algorithm to generate beautiful new colors.



60.5148, -0.0194, 12.9794



79.1736, 1.2062, 19.6863



66.1192, -9.2220, 18.3322



30.3347, -1.0403, 3.7168



35.0557, 19.5894, 21.9441



7.0920, 1.6405, 4.3988

Inverse Universe

The Inverse Universe completely reimagines the original color for something new.



57.9874, -4.9757, -7.9615



75.0930, -6.7726, -14.1537



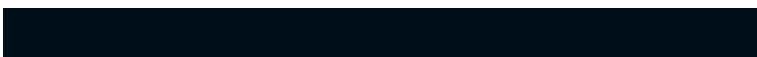
52.5231, 4.3656, -15.7017



29.8172, -2.0599, -0.5657



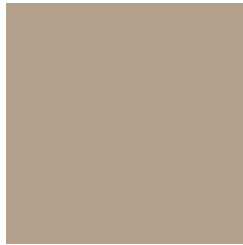
26.9586, 7.3395, -49.5399



5.8790, -0.6469, -5.9518

Previews

White Background



This preview shows how the HunterLab color 60.5134, -0.0175, 12.9785 looks on a white background.

Color Contrast Check

Large Text (above 18pt) WCAG AA × Fail

Any Text WCAG AA × Fail

Large Text (above 18pt) WCAG AAA × Fail

Any Text WCAG AAA × Fail

Black Background



This preview shows how the HunterLab color 60.5134, -0.0175, 12.9785 looks on a black background.

Color Contrast Check

Large Text (above 18pt) WCAG AA ✓ Pass

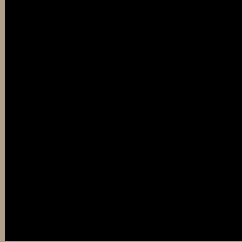
Any Text WCAG AA ✓ Pass

Large Text (above 18pt) WCAG AAA ✓ Pass

Any Text WCAG AAA ✓ Pass

If you want to check with other color combinations, try the [Color Contrast Checker](#).

HunterLab 60.5134, -0.0175, 12.9785 Background



This preview shows how black text looks on a background with the HunterLab color 60.5134, -0.0175, 12.9785.



This preview shows how white text looks on a background with the HunterLab color 60.5134, -0.0175,

12.9785.

Color Blindness Simulation

Color vision deficiency is a very complex topic, and I could not describe the different causes any better than Wikipedia does, so if you want to learn more, you should check out their [article about color blindness](#).

Dichromacy



Original Color

60.5134, -0.0175, 12.9785

Protanopia

60.6427, -3.9879, 12.6608

Deuteranopia

60.4994, 4.3491, 12.6601



Tritanopia

60.4559, 7.1311, 1.0461

Trichromacy



Original Color

60.5134, -0.0175, 12.9785

Protanomaly

60.6320, -2.5259, 12.6754

Deuteranomaly

60.4708, 2.8089, 12.6037

Tritanomaly

60.3377, 4.7100, 5.4761

Monochromacy



Original Color

60.5134, -0.0175, 12.9785

Achromatopsia

60.5188, -3.2291, 3.2881

Achromatomaly

60.5328, -2.1374, 6.8890

CSS Examples

Text

The CSS property to change the color of the text to HunterLab 60.5134, -0.0175, 12.9785 is called "color". The color property can be set on classes, ids or directly on the HTML element.

This example shows how text in the color `rgb(179, 160, 140)` looks like.

```
.text, #text, p{  
    color:rgb(179, 160, 140)  
}
```

If you want to add a text shadow in that color use the text-shadow property, you can generate a text shadow directly with our [CSS Text Shadow Generator](#).

Here you see how black text with a 4 pixel rgb(179, 160, 140) colored shadow looks like.

```
.shadow{ text-shadow: 4px 4px 2px rgb(179, 160, 140) }
```

Border

The CSS property to change the border of an element to HunterLab 60.5134, -0.0175, 12.9785 is called "border". The border property can be set on classes, ids or directly on the HTML element.

This example shows the color as border, it can be applied via the CSS property "border" or "border-color".

```
.border, #border, table{ border:4px solid rgb(179, 160, 140) }
```


If only the border color should be changed use the property `border-color`.

```
.border{ border-color:rgb(179, 160, 140) }
```

If you want to add a box shadow in that color use:

Here you see how a box with a 4 pixel `rgb(179, 160, 140)` colored shadow looks like.

```
.boxshadow{ -moz-box-shadow:4px 4px 4px  
4px rgb(179, 160, 140); -webkit-box-  
shadow:4px 4px 4px 4px rgb(179, 160, 140);  
box-shadow:4px 4px 4px 4px rgb(179, 160,  
140) }
```

Background

The CSS property to change the background color of an element to HunterLab 60.5134, -0.0175, 12.9785 is called "background". The background property can be set on classes, ids or directly on the HTML element.

```
.background, #background, body{  
background: rgb(179, 160, 140) }
```

If only the background color should be changed can be used:

```
.background{ background-color: rgb(179,  
160, 140) }
```

This example shows the color as background, it is applied via the CSS property "background".

To optimize and compress your CSS code, you can use our [online CSS compressor and optimizer](#) based on csstidy. If you want to create a linear or radial gradient as background or border, check our [CSS Gradient Generator](#).

Hey! You found this booklet interesting? Support Converting Colors with the new Membership Option!

The pro membership hides all ads, plus gives you double the colors in the color bucket, and more awesome pro features!

[Learn more, Memberships starting at \\$2.50/m!](#)

**Follow me
on Twitter!**

@ConvertingColor