

Converting Colors

HunterLab(60.4182, 19.9411,
10.0265)

Have a look what the booklet for
HunterLab(60.4182, 19.9411,
10.0265) contains.

HunterLab(60.4523, 19.6651, 10.1164)	3
<i>Conversions</i>	4
<i>Details</i>	6
<i>Harmonies</i>	12
<i>Previews</i>	24
<i>Color Blindness Simulation</i>	28
<i>CSS Examples</i>	31

Color

**HunterLab(60.4523, 19.6651,
10.1164)**

Conversions

Conversions Part 1

Format	Color
Hex	D39294
RGB	211, 146, 148
RGB Percent	83%, 57%, 58%
CMY	0.1725, 0.4274, 0.4196
CMYK	0.00, 0.31, 0.30, 0.17
HSL	358°, 42%, 70%
HSV	358°, 31%, 83%
XYZ	42.4882, 36.5448, 32.8315
YIQ	165.6630, 38.0980, 14.4020

Conversions

Conversions Part 2

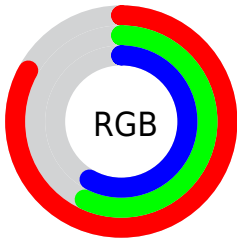
Format	Color
R_{YB}	211, 146, 148
Decimal	13865620
CIE _{Lab}	66.94, 24.83, 8.88
CIE _{LCh}	67, 26.370, 19.673
Yxy	36.5465, 0.3798, 0.3267
Android (android.graphics.Color)	4292055700 (0xFFD39294)
YUV	165.6630, -8.7079, 39.7605
Hunter-Lab	60.4523, 19.6651, 10.1164

Details

The HunterLab color **60.4523, 19.6651, 10.1164** is a light color, and the websafe version is hex **CC9999**. A complement of this color would be **75.6993, -22.4522, -0.9956**, and the grayscale version is **61.6378, -3.2888, 3.3489**.

A 20% lighter version of the original color is **81.7513, 15.3553, 10.1188**, and **40.0201, 18.1329, 8.2229** is the 20% darker color. If you saturate the color by 10%, you get **54.8077, 28.0168, 12.3386**, and if you desaturate by 10%, it is **66.6101, 11.5583, 8.0752**.

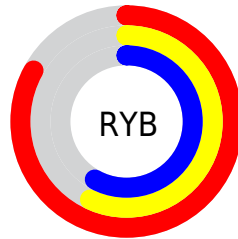
Distribution



Red (83%)

Green (57%)

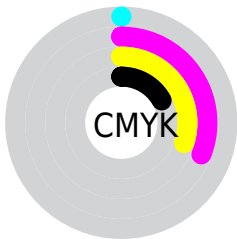
Blue (58%)



Red (83%)

Yellow (57%)

Blue (58%)

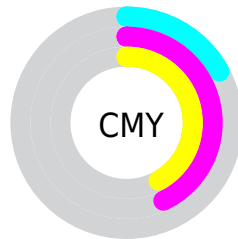


Cyan (0%)

Magenta (31%)

Yellow (30%)

Black (17%)



Cyan (17%)

Magenta (43%)

Yellow (42%)

Brightness & Saturation Gradients

These gradients show how the HunterLab color 60.4523, 19.6651, 10.1164 changes by changing the brightness by 10 percent. The first figure shows a shift by +10% for each color and the second figure -10%.

Similar to the brightness gradients but the following saturation gradients show a change of the HunterLab color 60.4523, 19.6651, 10.1164 by changing the saturation by 10% instead.

60.4523, 19.6651,
10.1164

60.4523, 19.6651,
10.1164

182.0283, 22.1794,
20.0950

49.8564, 19.0045,
9.0604

83.5912, 20.7032,
12.2496

39.9628, 18.2397,
8.0033

96.0635, 21.1032,
13.3303

30.8271, 17.3540,
6.9386

109.1010, 21.4322,
14.4228

22.5184, 16.3306,
5.8536

122.6801, 21.6957,
15.5285

15.1289, 15.1535,
4.7253

136.7801, 21.8983,
16.6481

8.7624, 13.9781,
4.6765

151.3823, 22.0443,

0.0000, INF, NaN

17.7821

0.0000, NaN, NaN

166.4701, 22.1369,
18.9310

0.0000, NaN, NaN

■ 60.4523, 19.6651,
10.1164

■ 60.4523, 19.6651,
10.1164

■ 54.8077, 28.0168,
12.3386

■ 66.6101, 11.5583,
8.0752

■ 49.7735, 36.4560,
14.7072

■ 73.1938, 3.7641,
6.2124

■ 45.4673, 44.6500,
17.1394

■ 80.1381, -3.7184,
4.5149

■ 42.0084, 52.0663,
19.4802

■ 87.3905, -10.9144,
2.9629

■ 39.4918, 58.0260,
21.5101

■ 94.9095, -17.8597,
1.5361

■ 37.9473, 61.9261,
23.0045

■ 96.2231, -18.7350,
0.6696

■ 37.2332, 63.8012,
23.7636

Harmonies

Analogous

The Analogous color harmony consists of three colors that are next to each other on the color wheel.



60.4537, 20.7604, -0.7094



60.4523, 19.6651, 10.1164



60.4537, 12.1721, 17.5454

Triad

The Triadic color harmony groups three colors that are evenly spaced from another and form a triangle on the color wheel.



60.4537, 19.6625, 10.1175



60.4537, -19.5776, 15.6623



60.4537, -7.2442, -22.0378

Complementary

The Complementary color scheme is a pair of colors which are on the opposite of each other on the color wheel.



60.4523, 19.6651, 10.1164



75.6993, -22.4522, -0.9956

Split Complementary

Split-complementary colors differ from the complementary color scheme. The scheme consists of three colors, the original color and two neighbors of the complement color.



60.4537, -17.2275, -15.5924



60.4523, 19.6651, 10.1164



60.4537, -23.9773, 7.0347

Square

The Square scheme is like the rectangle color scheme, but the four colors are evenly spaced on the color wheel.



60.4537, 19.6625, 10.1175



60.4537, -10.6818, 20.2956



60.4537, -23.1512, -4.4387



60.4537, 4.6035, -20.7753

Rectangle

The Rectangle color scheme consists of four colors that form a rectangle on the color wheel.



60.4523, 19.6651, 10.1164



60.4537, 4.8595, 20.2380



60.4537, -23.1512, -4.4387



60.4537, -10.9132, -20.6592

Sweetspot

The Sweet Spot groups the original color and five complimentary colors.



60.4537, 19.6625, 10.1175



92.1252, 3.0560, 7.3247



62.2846, 29.3812, -19.7713



42.0473, 2.0550, 3.5372

0.0000, NaN, NaN



46.2646, -2.4686, 2.5136

Same Dimension

The Same Dimension uses a secret algorithm to generate beautiful new colors.



60.4537, 19.6625, 10.1175



70.2080, 31.1671, 14.3281



68.6347, 3.7988, 18.8653



34.3716, 1.2508, 2.7653



28.9294, 49.5817, 18.3901



6.8561, 11.7813, 4.1199

Inverse Universe

The Inverse Universe completely reimagines the original color for something new.



60.4537, 19.6625, 10.1175



70.2080, 31.1671, 14.3281



66.1272, -7.5609, -14.6412



34.3716, 1.2508, 2.7653



28.9294, 49.5817, 18.3901



6.8561, 11.7813, 4.1199

Previews

White Background



This preview shows how the HunterLab color 60.4523, 19.6651, 10.1164 looks on a white background.

Color Contrast Check

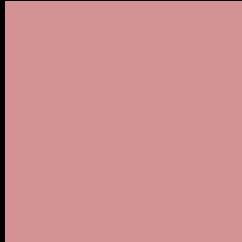
Large Text (above 18pt) WCAG AA × Fail

Any Text WCAG AA × Fail

Large Text (above 18pt) WCAG AAA × Fail

Any Text WCAG AAA × Fail

Black Background



This preview shows how the HunterLab color 60.4523, 19.6651, 10.1164 looks on a black background.

Color Contrast Check

Large Text (above 18pt) WCAG AA ✓ Pass

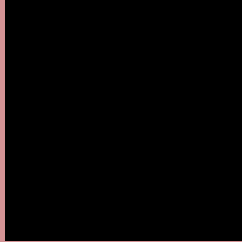
Any Text WCAG AA ✓ Pass

Large Text (above 18pt) WCAG AAA ✓ Pass

Any Text WCAG AAA ✓ Pass

If you want to check with other color combinations, try the [Color Contrast Checker](#).

HunterLab 60.4523, 19.6651, 10.1164 Background



This preview shows how black text looks on a background with the HunterLab color 60.4523, 19.6651, 10.1164.



This preview shows how white text looks on a background with the HunterLab color 60.4523, 19.6651,

Color Blindness Simulation

Color vision deficiency is a very complex topic, and I could not describe the different causes any better than Wikipedia does, so if you want to learn more, you should check out their [article about color blindness](#).

Dichromacy



Original Color

60.4523, 19.6651, 10.1164

Protanopia

60.7894, -2.6354, 6.3005

Deuteranopia

60.4182, 4.3284, 10.6188



Tritanopia

60.5377, 21.6660, 6.8781

Trichromacy



Original Color

60.4523, 19.6651, 10.1164

Protanomaly

60.5288, 5.1250, 7.4412

Deuteranomaly

60.2979, 9.6516, 10.1819

Tritanomaly

60.4547, 21.2453, 8.0675

Monochromacy



Original Color

60.4523, 19.6651, 10.1164

Achromatopsia

61.7516, -3.2949, 3.3551

Achromatomaly

61.0283, 4.1921, 5.8122

CSS Examples

Text

The CSS property to change the color of the text to HunterLab 60.4523, 19.6651, 10.1164 is called "color". The color property can be set on classes, ids or directly on the HTML element.

This example shows how text in the color `rgb(211, 146, 148)` looks like.

```
.text, #text, p{  
    color:rgb(211, 146, 148)  
}
```

If you want to add a text shadow in that color use the text-shadow property, you can generate a text shadow directly with our [CSS Text Shadow Generator](#).

Here you see how black text with a 4 pixel rgb(211, 146, 148) colored shadow looks like.

```
.shadow{ text-shadow: 4px 4px 2px rgb(211, 146, 148) }
```

Border

The CSS property to change the border of an element to HunterLab 60.4523, 19.6651, 10.1164 is called "border". The border property can be set on classes, ids or directly on the HTML element.

This example shows the color as border, it can be applied via the CSS property "border" or "border-color".

```
.border, #border, table{ border:4px solid rgb(211, 146, 148) }
```


If only the border color should be changed use the property `border-color`.

```
.border{ border-color:rgb(211, 146, 148) }
```

If you want to add a box shadow in that color use:

Here you see how a box with a 4 pixel `rgb(211, 146, 148)` colored shadow looks like.

```
.boxshadow{ -moz-box-shadow:4px 4px 4px  
4px rgb(211, 146, 148); -webkit-box-  
shadow:4px 4px 4px 4px rgb(211, 146, 148);  
box-shadow:4px 4px 4px 4px rgb(211, 146,  
148) }
```

Background

The CSS property to change the background color of an element to HunterLab 60.4523, 19.6651, 10.1164 is called "background". The background property can be set on classes, ids or directly on the HTML element.

```
.background, #background, body{  
background: rgb(211, 146, 148) }
```

If only the background color should be changed can be used:

```
.background{ background-color: rgb(211,  
146, 148) }
```

This example shows the color as background, it is applied via the CSS property "background".

To optimize and compress your CSS code, you can use our [online CSS compressor and optimizer](#) based on csstidy. If you want to create a linear or radial gradient as background or border, check our [CSS Gradient Generator](#).

Hey! You found this booklet interesting? Support Converting Colors with the new Membership Option!

The pro membership hides all ads, plus gives you double the colors in the color bucket, and more awesome pro features!

[Learn more, Memberships starting at \\$2.50/m!](#)

**Follow me
on Twitter!**

@ConvertingColor