

Converting Colors

HunterLab(60.5125, 9.2742,
7.9217)

Have a look what the booklet for
HunterLab(60.5125, 9.2742, 7.9217)
contains.

HunterLab(60.5125, 9.2742, 7.9217)	3
<i>Conversions</i>	4
<i>Details</i>	6
<i>Harmonies</i>	12
<i>Previews</i>	24
<i>Color Blindness Simulation</i>	28
<i>CSS Examples</i>	31

Color

**HunterLab(60.5125, 9.2742,
7.9217)**

Conversions

Conversions Part 1

Format	Color
Hex	C09A99
RGB	192, 154, 153
RGB Percent	75%, 60%, 60%
CMY	0.2471, 0.3961, 0.4000
CMYK	0.00, 0.20, 0.20, 0.25
HSL	2°, 24%, 68%
HSV	2°, 20%, 75%
XYZ	39.0436, 36.6176, 35.1471
YIQ	165.2480, 22.9690, 7.7450

Conversions

Conversions Part 2

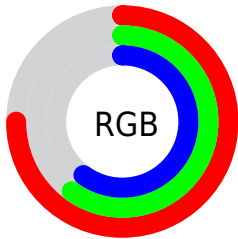
Format	Color
RYB	192, 154, 153
Decimal	12622489
CIELab	66.99, 13.97, 5.89
CIElCh	67, 15.161, 22.863
Yxy	36.6193, 0.3524, 0.3305
Android (android.graphics.Color)	4290812569 (0xFFC09A99)
YUV	165.2480, -6.0383, 23.4615
Hunter-Lab	60.5125, 9.2742, 7.9217

Details

The HunterLab color $60.5125, 9.2742, 7.9217$ is a light color, and the websafe version is hex $CC9999$. A complement of this color would be $69.1654, -14.5007, -0.3837$, and the grayscale version is $61.4608, -3.2794, 3.3393$.

A 20% lighter version of the original color is $83.5203, 9.6101, 9.7274$, and $40.0788, 8.8257, 6.2550$ is the 20% darker color. If you saturate the color by 10%, you get $55.0760, 16.1867, 10.0193$, and if you desaturate by 10%, it is $66.3093, 2.6522, 5.9170$.

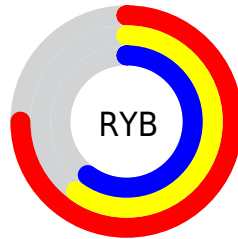
Distribution



Red (75%)

Green (60%)

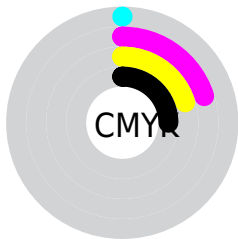
Blue (60%)



Red (75%)

Yellow (60%)

Blue (60%)

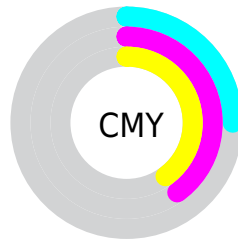


Cyan (0%)

Magenta (20%)

Yellow (20%)

Black (25%)



Cyan (25%)

Magenta (40%)

Yellow (40%)

Brightness & Saturation Gradients

These gradients show how the HunterLab color 60.5125, 9.2742, 7.9217 changes by changing the brightness by 10 percent. The first figure shows a shift by +10% for each color and the second figure -10%.

Similar to the brightness gradients but the following saturation gradients show a change of the HunterLab color 60.5125, 9.2742, 7.9217 by changing the saturation by 10% instead.

■ 60.5125, 9.2742,
7.9217

■ 60.5125, 9.2742,
7.9217

182.1152, 7.9666,
16.7420

■ 49.9128, 9.1228,
7.0331

■ 83.6582, 9.3574,
9.7521

■ 40.0152, 8.8904,
6.1576

■ 96.1337, 9.3069,
10.6939

■ 30.8752, 8.5623,
5.2926

109.1742, 9.2011,
11.6544

■ 22.5616, 8.1212,
4.4319

122.7562, 9.0442,
12.6339

■ 15.1668, 7.5432,
3.5633

136.8590, 8.8395,
13.6325

■ 8.7971, 6.9065,
3.2544

151.4640, 8.5900,

0.0000, INF, NaN

14.6501

0.0000, NaN, NaN

166.5544, 8.2983,
15.6866

0.0000, NaN, NaN

■ 60.5125, 9.2742,
7.9217

■ 60.5125, 9.2742,
7.9217

■ 55.0760, 16.1867,
10.0193

■ 66.3093, 2.6522,
5.9170

■ 50.0631, 23.3621,
12.1908

■ 72.4082, -3.6806,
4.0030

■ 45.5569, 30.6870,
14.3944

■ 78.7677, -9.7530,
2.1739

■ 41.6525, 37.9257,
16.5450

■ 85.3536, -15.5981,
0.4202

■ 38.4496, 44.6787,
18.5054

■ 92.1386, -21.2494,
-1.2684

■ 36.0344, 50.4009,
20.0971

■ 94.8401, -23.7796,
-1.1210

■ 34.4493, 54.5375,
21.1524

■ 33.6360, 56.7831,
21.7204

Harmonies

Analogous

The Analogous color harmony consists of three colors that are next to each other on the color wheel.



60.5139, 10.2730, 1.7307



60.5125, 9.2742, 7.9217



60.5139, 4.8522, 12.3807

Triad

The Triadic color harmony groups three colors that are evenly spaced from another and form a triangle on the color wheel.



60.5139, 9.2721, 7.9227



60.5139, -13.2910, 10.3215



60.5139, -4.8455, -10.3685

Complementary

The Complementary color scheme is a pair of colors which are on the opposite of each other on the color wheel.



60.5125, 9.2742, 7.9217



69.1654, -14.5007, -0.3837

Split Complementary

Split-complementary colors differ from the complementary color scheme. The scheme consists of three colors, the original color and two neighbors of the complement color.



60.5139, -10.9131, -7.4652



60.5125, 9.2742, 7.9217



60.5139, -15.6478, 4.8166

Square

The Square scheme is like the rectangle color scheme, but the four colors are evenly spaced on the color wheel.



60.5139, 9.2721, 7.9227



60.5139, -8.2209, 13.6554



60.5139, -14.7968, -1.7321



60.5139, 1.9237, -9.3018

Rectangle

The Rectangle color scheme consists of four colors that form a rectangle on the color wheel.



60.5125, 9.2742, 7.9217



60.5139, 0.6626, 13.9995



60.5139, -14.7968, -1.7321



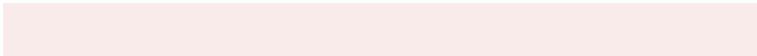
60.5139, -7.0307, -9.8146

Sweetspot

The Sweet Spot groups the original color and five complimentary colors.



60.5139, 9.2721, 7.9227



92.6726, -0.0692, 6.8639



61.4544, 16.1103, -9.5997



42.6752, 0.2286, 3.2580



98.8636, -5.2751, 5.3714



45.2661, -2.4153, 2.4594

Same Dimension

The Same Dimension uses a secret algorithm to generate beautiful new colors.



60.5139, 9.2721, 7.9227



78.4129, 16.2245, 11.7998



65.9178, -0.3758, 13.5043



31.8095, 0.9733, 2.7274



27.6234, 46.4708, 17.8349



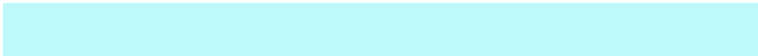
5.8680, 9.2380, 3.7776

Inverse Universe

The Inverse Universe completely reimagines the original color for something new.



69.1654, -14.5007, -0.3837



92.2970, -22.0166, -1.5583



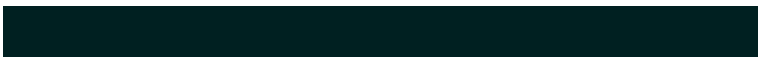
63.2665, -5.2646, -7.8426



33.7380, -4.3053, 0.8823



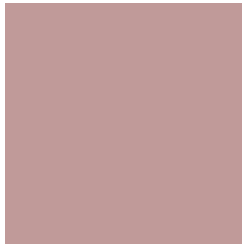
51.4891, -26.3960, -7.3755



10.7691, -5.5665, -1.4440

Previews

White Background



This preview shows how the HunterLab color 60.5125, 9.2742, 7.9217 looks on a white background.

Color Contrast Check

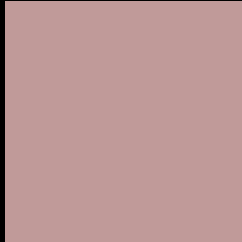
Large Text (above 18pt) WCAG AA × Fail

Any Text WCAG AA × Fail

Large Text (above 18pt) WCAG AAA × Fail

Any Text WCAG AAA × Fail

Black Background



This preview shows how the HunterLab color 60.5125, 9.2742, 7.9217 looks on a black background.

Color Contrast Check

Large Text (above 18pt) WCAG AA ✓ Pass

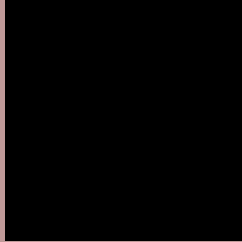
Any Text WCAG AA ✓ Pass

Large Text (above 18pt) WCAG AAA ✓ Pass

Any Text WCAG AAA ✓ Pass

If you want to check with other color combinations, try the [Color Contrast Checker](#).

HunterLab 60.5125, 9.2742, 7.9217 Background



This preview shows how black text looks on a background with the HunterLab color 60.5125, 9.2742, 7.9217.



This preview shows how white text looks on a background with the HunterLab color 60.5125, 9.2742, 7.9217.

Color Blindness Simulation

Color vision deficiency is a very complex topic, and I could not describe the different causes any better than Wikipedia does, so if you want to learn more, you should check out their [article about color blindness](#).

Dichromacy



Original Color

60.5125, 9.2742, 7.9217

Protanopia

60.7277, -2.7932, 5.7893

Deuteranopia

60.6531, 3.9910, 8.4059



Tritanopia

60.3939, 12.3021, 2.9499

Trichromacy



Original Color

60.5125, 9.2742, 7.9217

Protanomaly

60.6399, 1.2512, 6.6356

Deuteranomaly

60.6795, 5.5189, 8.4615

Tritanomaly

60.5458, 11.1722, 4.9358

Monochromacy



Original Color

60.5125, 9.2742, 7.9217

Achromatopsia

61.3402, -3.2730, 3.3327

Achromatomaly

60.9729, 1.1978, 4.8046

CSS Examples

Text

The CSS property to change the color of the text to HunterLab 60.5125, 9.2742, 7.9217 is called "color". The color property can be set on classes, ids or directly on the HTML element.

This example shows how text in the color `rgb(192, 154, 153)` looks like.

```
.text, #text, p{  
    color:rgb(192, 154, 153)  
}
```

If you want to add a text shadow in that color use the text-shadow property, you can generate a text shadow directly with our [CSS Text Shadow Generator](#).

Here you see how black text with a 4 pixel rgb(192, 154, 153) colored shadow looks like.

```
.shadow{ text-shadow: 4px 4px 2px rgb(192, 154, 153) }
```

Border

The CSS property to change the border of an element to HunterLab 60.5125, 9.2742, 7.9217 is called "border".

The border property can be set on classes, ids or directly on the HTML element.

This example shows the color as border, it can be applied via the CSS property "border" or "border-color".

```
.border, #border, table{ border:4px solid rgb(192, 154, 153) }
```


If only the border color should be changed use the property `border-color`.

```
.border{ border-color:rgb(192, 154, 153) }
```

If you want to add a box shadow in that color use:

Here you see how a box with a 4 pixel `rgb(192, 154, 153)` colored shadow looks like.

```
.boxshadow{ -moz-box-shadow:4px 4px 4px  
4px rgb(192, 154, 153); -webkit-box-  
shadow:4px 4px 4px 4px rgb(192, 154, 153);  
box-shadow:4px 4px 4px 4px rgb(192, 154,  
153) }
```

Background

The CSS property to change the background color of an element to HunterLab 60.5125, 9.2742, 7.9217 is called "background". The background property can be set on classes, ids or directly on the HTML element.

```
.background, #background, body{  
background: rgb(192, 154, 153) }
```

If only the background color should be changed can be used:

```
.background{ background-color: rgb(192,  
154, 153) }
```

This example shows the color as background, it is applied via the CSS property "background".

To optimize and compress your CSS code, you can use our [online CSS compressor and optimizer](#) based on csstidy. If you want to create a linear or radial gradient as background or border, check our [CSS Gradient Generator](#).

Hey! You found this booklet interesting? Support Converting Colors with the new Membership Option!

The pro membership hides all ads, plus gives you double the colors in the color bucket, and more awesome pro features!

[Learn more, Memberships starting at \\$2.50/m!](#)

**Follow me
on Twitter!**

@ConvertingColor