

Converting Colors

HunterLab(60.5244, 15.6028,
18.8043)

Have a look what the booklet for
HunterLab(60.5244, 15.6028,
18.8043) contains.

HunterLab(60.4019, 15.7317, 18.7770)	3
<i>Conversions</i>	4
<i>Details</i>	6
<i>Harmonies</i>	12
<i>Previews</i>	24
<i>Color Blindness Simulation</i>	28
<i>CSS Examples</i>	31

Color

**HunterLab(60.4019, 15.7317,
18.7770)**

Conversions

Conversions Part 1

Format	Color
Hex	D3947C
RGB	211, 148, 124
RGB Percent	83%, 58%, 49%
CMY	0.1726, 0.4196, 0.5137
CMYK	0.00, 0.30, 0.41, 0.17
HSL	17°, 50%, 66%
HSV	17°, 41%, 83%
XYZ	41.0919, 36.4839, 23.9451
YIQ	164.1010, 45.2520, 5.8920

Conversions

Conversions Part 2

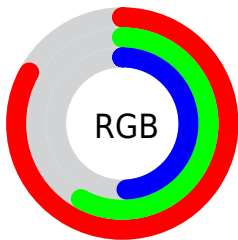
Format	Color
R_{YB}	211, 157, 124
Decimal	13866108
CIE _{Lab}	66.89, 20.79, 22.19
CIE _{LCh}	67, 30.411, 46.860
Yxy	36.4857, 0.4048, 0.3594
Android (android.graphics.Color)	4292056188 (0xFFD3947C)
YUV	164.1010, -19.7698, 41.1304
Hunter-Lab	60.4019, 15.7317, 18.7770

Details

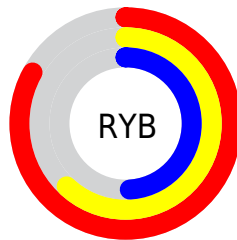
The HunterLab color **60.4019, 15.7317, 18.7770** is a light color, and the websafe version is hex **CC9966**. A complement of this color would be **66.7286, -15.5536, -13.9123**, and the grayscale version is **61.0374, -3.2568, 3.3163**.

A 20% lighter version of the original color is **81.6550, 10.7734, 20.3018**, and **39.9092, 14.5630, 14.9576** is the 20% darker color. If you saturate the color by 10%, you get **56.1486, 21.4552, 21.4516**, and if you desaturate by 10%, it is **64.9550, 10.3489, 15.7170**.

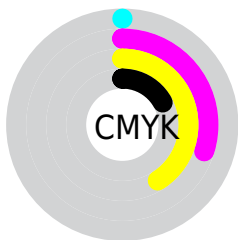
Distribution



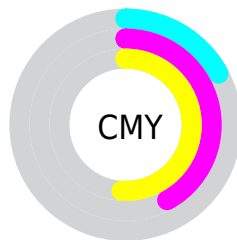
- Red (83%)
- Green (58%)
- Blue (49%)



- Red (83%)
- Yellow (62%)
- Blue (49%)



- Cyan (0%)
- Magenta (30%)
- Yellow (41%)
- Black (17%)



- Cyan (17%)
- Magenta (42%)
- Yellow (51%)

Brightness & Saturation Gradients

These gradients show how the HunterLab color 60.4019, 15.7317, 18.7770 changes by changing the brightness by 10 percent. The first figure shows a shift by +10% for each color and the second figure -10%.

Similar to the brightness gradients but the following saturation gradients show a change of the HunterLab color 60.4019, 15.7317, 18.7770 by changing the saturation by 10% instead.

60.4019, 15.7317,
18.7770

60.4019, 15.7317,
18.7770

181.9556, 16.8516,
34.2334

49.8091, 15.2542,
16.9141

83.5350, 16.4234,
22.3586

39.9189, 14.6801,
14.9778

96.0047, 16.6594,
24.0990

30.7869, 13.9923,
12.9410

109.0396, 16.8299,
25.8170

22.4821, 13.1725,
10.7611

122.6163, 16.9398,
27.5182

15.0972, 12.1991,
8.6656

136.7139, 16.9935,
29.2072

8.7332, 11.2085,
6.1133

151.3139, 16.9946,

0.0000, INF, NaN

30.8875

0.0000, NaN, NaN

166.3995, 16.9464,
32.5622

0.0000, NaN, NaN

■ 60.4019, 15.7317,
18.7770

■ 60.4019, 15.7317,
18.7770

■ 56.1486, 21.4552,
21.4516

■ 64.9550, 10.3489,
15.7170

■ 52.2327, 27.4947,
23.6506

■ 69.7669, 5.3163,
12.3420

■ 48.7021, 33.7651,
25.2776

■ 74.8078, 0.6139,
8.7114

■ 45.6053, 40.1151,
26.2401

■ 80.0510, -3.7844,
4.8708

■ 42.9875, 46.3108,
26.4802

■ 85.4743, -7.9085,
0.8555

■ 41.1060, 51.3375,
26.2280

■ 91.0590, -11.7883,
-3.3071

■ 96.2074, -18.7113,
0.6508

■ 96.2231, -18.7352,
0.6696

Harmonies

Analogous

The Analogous color harmony consists of three colors that are next to each other on the color wheel.



60.4034, 23.9129, 10.0715



60.4019, 15.7317, 18.7770



60.4034, 2.8384, 22.8531

Triad

The Triadic color harmony groups three colors that are evenly spaced from another and form a triangle on the color wheel.



60.4034, 15.7289, 18.7779



60.4034, -26.6557, 8.6775



60.4034, 4.5526, -25.7164

Complementary

The Complementary color scheme is a pair of colors which are on the opposite of each other on the color wheel.



60.4019, 15.7317, 18.7770



66.7286, -15.5536, -13.9123

Split Complementary

Split-complementary colors differ from the complementary color scheme. The scheme consists of three colors, the original color and two neighbors of the complement color.



60.4034, -9.0606, -26.3242



60.4019, 15.7317, 18.7770



60.4034, -26.2852, -4.3869

Square

The Square scheme is like the rectangle color scheme, but the four colors are evenly spaced on the color wheel.



60.4034, 15.7289, 18.7779



60.4034, -21.1597, 17.9529



60.4034, -20.0985, -17.8430



60.4034, 17.0792, -16.3305

Rectangle

The Rectangle color scheme consists of four colors that form a rectangle on the color wheel.



60.4019, 15.7317, 18.7770



60.4034, -6.3204, 23.1492



60.4034, -20.0985, -17.8430



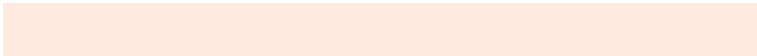
60.4034, -0.0685, -27.0166

Sweetspot

The Sweet Spot groups the original color and five complimentary colors.



60.4034, 15.7289, 18.7779



92.1154, 1.2685, 11.2092



56.4683, 37.5085, -14.3837



42.2297, 0.9346, 5.4667

0.0000, NaN, NaN



46.2646, -2.4686, 2.5136

Same Dimension

The Same Dimension uses a secret algorithm to generate beautiful new colors.



60.4034, 15.7289, 18.7779



70.4361, 25.3488, 26.0543



72.4120, -5.7667, 28.9054



35.1163, -0.0983, 3.7196



32.1653, 39.1976, 20.5063



8.4416, 6.9886, 5.3240

Inverse Universe

The Inverse Universe completely reimagines the original color for something new.



66.7286, -15.5536, -13.9123



79.6441, -20.6046, -21.7138



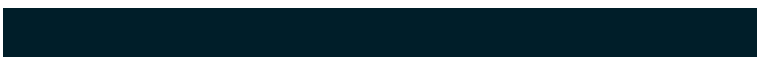
53.8759, 5.4075, -34.5282



35.8225, -3.5366, 0.0921



40.8949, -10.2894, -28.9032



10.3163, -3.3543, -5.6535

Previews

White Background



This preview shows how the HunterLab color 60.4019, 15.7317, 18.7770 looks on a white background.

Color Contrast Check

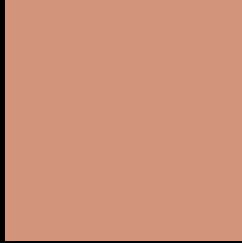
Large Text (above 18pt) WCAG AA × Fail

Any Text WCAG AA × Fail

Large Text (above 18pt) WCAG AAA × Fail

Any Text WCAG AAA × Fail

Black Background



This preview shows how the HunterLab color 60.4019, 15.7317, 18.7770 looks on a black background.

Color Contrast Check

Large Text (above 18pt) WCAG AA ✓ Pass

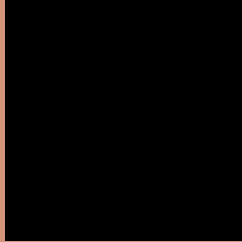
Any Text WCAG AA ✓ Pass

Large Text (above 18pt) WCAG AAA ✓ Pass

Any Text WCAG AAA ✓ Pass

If you want to check with other color combinations, try the [Color Contrast Checker](#).

HunterLab 60.4019, 15.7317, 18.7770 Background



This preview shows how black text looks on a background with the HunterLab color 60.4019, 15.7317, 18.7770.



This preview shows how white text looks on a background with the HunterLab color 60.4019, 15.7317,

Color Blindness Simulation

Color vision deficiency is a very complex topic, and I could not describe the different causes any better than Wikipedia does, so if you want to learn more, you should check out their [article about color blindness](#).

Dichromacy



Original Color

60.4019, 15.7317, 18.7770

Protanopia

60.5948, -4.6245, 16.2469

Deuteranopia

60.3229, 4.3336, 19.1495



Tritanopia

60.5056, 22.8041, 7.2951

Trichromacy



Original Color

60.4019, 15.7317, 18.7770

Protanomaly

60.4789, 2.2337, 17.2853

Deuteranomaly

60.2948, 8.5195, 18.8759

Tritanomaly

60.3412, 20.4215, 11.6135

Monochromacy



Original Color

60.4019, 15.7317, 18.7770

Achromatopsia

60.9293, -3.2510, 3.3104

Achromatomaly

60.3717, 2.8827, 9.3269

CSS Examples

Text

The CSS property to change the color of the text to HunterLab 60.4019, 15.7317, 18.7770 is called "color". The color property can be set on classes, ids or directly on the HTML element.

This example shows how text in the color `rgb(211, 148, 124)` looks like.

```
.text, #text, p{  
    color:rgb(211, 148, 124)  
}
```

If you want to add a text shadow in that color use the text-shadow property, you can generate a text shadow directly with our [CSS Text Shadow Generator](#).

Here you see how black text with a 4 pixel rgb(211, 148, 124) colored shadow looks like.

```
.shadow{ text-shadow: 4px 4px 2px rgb(211, 148, 124) }
```

Border

The CSS property to change the border of an element to HunterLab 60.4019, 15.7317, 18.7770 is called "border". The border property can be set on classes, ids or directly on the HTML element.

This example shows the color as border, it can be applied via the CSS property "border" or "border-color".

```
.border, #border, table{ border:4px solid rgb(211, 148, 124) }
```


If only the border color should be changed use the property `border-color`.

```
.border{ border-color:rgb(211, 148, 124) }
```

If you want to add a box shadow in that color use:

Here you see how a box with a 4 pixel `rgb(211, 148, 124)` colored shadow looks like.

```
.boxshadow{ -moz-box-shadow:4px 4px 4px  
4px rgb(211, 148, 124); -webkit-box-  
shadow:4px 4px 4px 4px rgb(211, 148, 124);  
box-shadow:4px 4px 4px 4px rgb(211, 148,  
124) }
```

Background

The CSS property to change the background color of an element to HunterLab 60.4019, 15.7317, 18.7770 is called "background". The background property can be set on classes, ids or directly on the HTML element.

```
.background, #background, body{  
background: rgb(211, 148, 124) }
```

If only the background color should be changed can be used:

```
.background{ background-color: rgb(211,  
148, 124) }
```

This example shows the color as background, it is applied via the CSS property "background".

To optimize and compress your CSS code, you can use our [online CSS compressor and optimizer](#) based on csstidy. If you want to create a linear or radial gradient as background or border, check our [CSS Gradient Generator](#).

Hey! You found this booklet interesting? Support Converting Colors with the new Membership Option!

The pro membership hides all ads, plus gives you double the colors in the color bucket, and more awesome pro features!

[Learn more, Memberships starting at \\$2.50/m!](#)

**Follow me
on Twitter!**

@ConvertingColor