

Converting Colors

HunterLab(60.5374, 12.4617,
8.5495)

Have a look what the booklet for
HunterLab(60.5374, 12.4617,
8.5495) contains.

HunterLab(60.6047, 12.2978, 8.4982)	3
<i>Conversions</i>	4
<i>Details</i>	6
<i>Harmonies</i>	12
<i>Previews</i>	24
<i>Color Blindness Simulation</i>	28
<i>CSS Examples</i>	31

Color

**HunterLab(60.6047, 12.2978,
8.4982)**

Conversions

Conversions Part 1

Format	Color
Hex	C69898
RGB	198, 152, 152
RGB Percent	78%, 60%, 60%
CMY	0.2235, 0.4039, 0.4039
CMYK	0.00, 0.23, 0.23, 0.22
HSL	0°, 29%, 69%
HSV	0°, 23%, 78%
XYZ	40.1845, 36.7293, 34.6773
YIQ	165.7540, 27.4160, 9.7520

Conversions

Conversions Part 2

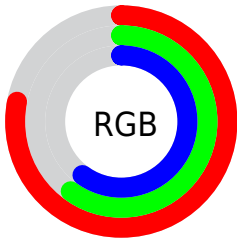
Format	Color
R _Y B	198, 152, 152
Decimal	13015192
CIE Lab	67.07, 17.19, 6.65
CIE LCh	67, 18.433, 21.146
Yxy	36.7310, 0.3601, 0.3291
Android (android.graphics.Color)	4291205272 (0xFFC69898)
YUV	165.7540, -6.7807, 28.2797
Hunter-Lab	60.6047, 12.2978, 8.4982

Details

The HunterLab color **60.6047, 12.2978, 8.4982** is a light color, and the websafe version is hex **CC9999**. A complement of this color would be **71.5118, -16.9762, -0.5274**, and the grayscale version is **61.6706, -3.2906, 3.3507**.

A 20% lighter version of the original color is **83.5816, 12.7344, 10.3038**, and **40.1081, 11.3895, 6.7136** is the 20% darker color. If you saturate the color by 10%, you get **54.9872, 19.8140, 10.6138**, and if you desaturate by 10%, it is **66.6386, 5.0759, 6.5145**.

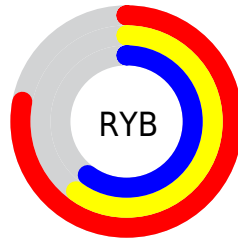
Distribution



Red (78%)

Green (60%)

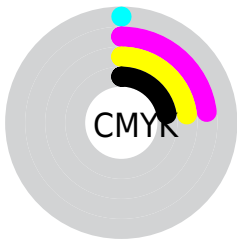
Blue (60%)



Red (78%)

Yellow (60%)

Blue (60%)

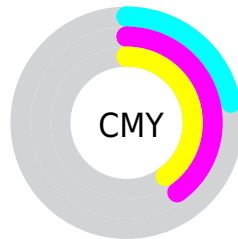


Cyan (0%)

Magenta (23%)

Yellow (23%)

Black (22%)



Cyan (22%)

Magenta (40%)

Yellow (40%)

Brightness & Saturation Gradients

These gradients show how the HunterLab color 60.6047, 12.2978, 8.4982 changes by changing the brightness by 10 percent. The first figure shows a shift by +10% for each color and the second figure -10%.

Similar to the brightness gradients but the following saturation gradients show a change of the HunterLab color 60.6047, 12.2978, 8.4982 by changing the saturation by 10% instead.

■ 60.6047, 12.2978,
8.4982

■ 60.6047, 12.2978,
8.4982

182.2483, 12.1391,
17.6118

■ 49.9993, 11.9917,
7.5674

■ 83.7609, 12.6697,
10.4050

■ 40.0955, 11.5966,
6.6464

■ 96.2413, 12.7549,
11.3819

■ 30.9489, 11.0966,
5.7314

109.2864, 12.7798,
12.3758

■ 22.6280, 10.4738,
4.8148

122.8730, 12.7491,
13.3873

■ 15.2250, 9.7039,
3.8818

136.9801, 12.6666,
14.4166

■ 8.8499, 8.8572,
3.5964

151.5892, 12.5356,

0.0000, INF, NaN

15.4637

0.0000, NaN, NaN

166.6836, 12.3589,
16.5288

0.0000, NaN, NaN

■ 60.6047, 12.2978,
8.4982

■ 60.6047, 12.2978,
8.4982

■ 54.9872, 19.8140,
10.6138

■ 66.6386, 5.0759,
6.5145

■ 49.8631, 27.5624,
12.8410

■ 73.0196, -1.8376,
4.6575

■ 45.3315, 35.3627,
15.1283

■ 79.6975, -8.4672,
2.9170

■ 41.5025, 42.8726,
17.3687

■ 86.6313, -14.8469,
1.2786

■ 38.4841, 49.5613,
19.3921

■ 93.7889, -21.0130,
-0.2720

■ 36.3544, 54.7892,
20.9899

■ 95.2606, -22.2377,
-0.5738

■ 35.1206, 58.0457,
21.9914

■ 34.6499, 59.3365,
22.3899

Harmonies

Analogous

The Analogous color harmony consists of three colors that are next to each other on the color wheel.



60.6061, 13.2648, 0.9276



60.6047, 12.2978, 8.4982



60.6061, 7.0499, 13.9229

Triad

The Triadic color harmony groups three colors that are evenly spaced from another and form a triangle on the color wheel.



60.6061, 12.2956, 8.4992



60.6061, -15.1140, 12.0308



60.6061, -5.6618, -13.6051

Complementary

The Complementary color scheme is a pair of colors which are on the opposite of each other on the color wheel.



60.6047, 12.2978, 8.4982



71.5118, -16.9762, -0.5274

Split Complementary

Split-complementary colors differ from the complementary color scheme. The scheme consists of three colors, the original color and two neighbors of the complement color.



60.6061, -12.8805, -9.6829



60.6047, 12.2978, 8.4982



60.6061, -18.1427, 5.5782

Square

The Square scheme is like the rectangle color scheme, but the four colors are evenly spaced on the color wheel.



60.6061, 12.2956, 8.4992



60.6061, -8.8598, 15.7641



60.6061, -17.3475, -2.4073



60.6061, 2.5985, -12.5482

Rectangle

The Rectangle color scheme consists of four colors that form a rectangle on the color wheel.



60.6047, 12.2978, 8.4982



60.6061, 1.9803, 15.9238



60.6061, -17.3475, -2.4073



60.6061, -8.2837, -12.8079

Sweetspot

The Sweet Spot groups the original color and five complimentary colors.



60.6061, 12.2956, 8.4992



93.8293, 1.0710, 7.1356



62.0806, 19.9146, -12.4224



43.1680, 0.7553, 3.3709

0.0000, NaN, NaN



46.2646, -2.4686, 2.5136

Same Dimension

The Same Dimension uses a secret algorithm to generate beautiful new colors.



60.6061, 12.2956, 8.4992



76.6951, 21.5064, 12.7491



67.0322, 0.6243, 15.0406



32.6145, 1.1245, 2.7325



27.9427, 47.8501, 18.0559



6.0808, 10.4108, 3.9292

Inverse Universe

The Inverse Universe completely reimagines the original color for something new.



71.5118, -16.9762, -0.5274



94.2747, -25.8544, -1.8604



64.3530, -5.9044, -9.6724



34.7382, -4.5431, 0.9856



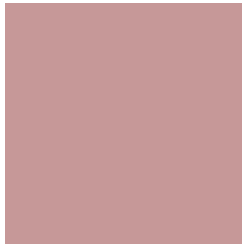
53.7701, -28.5034, -5.6773



11.7006, -6.2026, -1.2351

Previews

White Background



This preview shows how the HunterLab color 60.6047, 12.2978, 8.4982 looks on a white background.

Color Contrast Check

Large Text (above 18pt) WCAG AA × Fail

Any Text WCAG AA × Fail

Large Text (above 18pt) WCAG AAA × Fail

Any Text WCAG AAA × Fail

Black Background



This preview shows how the HunterLab color 60.6047, 12.2978, 8.4982 looks on a black background.

Color Contrast Check

Large Text (above 18pt) WCAG AA ✓ Pass

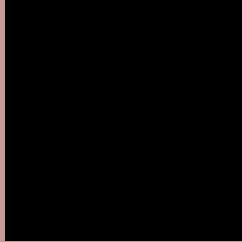
Any Text WCAG AA ✓ Pass

Large Text (above 18pt) WCAG AAA ✓ Pass

Any Text WCAG AAA ✓ Pass

If you want to check with other color combinations, try the [Color Contrast Checker](#).

HunterLab 60.6047, 12.2978, 8.4982 Background



This preview shows how black text looks on a background with the HunterLab color 60.6047, 12.2978, 8.4982.



This preview shows how white text looks on a background with the HunterLab color 60.6047, 12.2978,

Color Blindness Simulation

Color vision deficiency is a very complex topic, and I could not describe the different causes any better than Wikipedia does, so if you want to learn more, you should check out their [article about color blindness](#).

Dichromacy



Original Color

60.6047, 12.2978, 8.4982

Protanopia

60.8176, -2.4812, 5.8969

Deuteranopia

60.7276, 4.1874, 8.9083



Tritanopia

60.4677, 15.1573, 4.0086

Trichromacy



Original Color

60.6047, 12.2978, 8.4982

Protanomaly

60.6467, 2.7378, 6.6693

Deuteranomaly

60.6878, 6.9199, 8.9129

Tritanomaly

60.6168, 14.0401, 5.9579

Monochromacy



Original Color

60.6047, 12.2978, 8.4982

Achromatopsia

61.7516, -3.2949, 3.3551

Achromatomaly

61.2600, 2.1734, 5.1523

CSS Examples

Text

The CSS property to change the color of the text to HunterLab 60.6047, 12.2978, 8.4982 is called "color". The color property can be set on classes, ids or directly on the HTML element.

This example shows how text in the color `rgb(198, 152, 152)` looks like.

```
.text, #text, p{  
    color:rgb(198, 152, 152)  
}
```

If you want to add a text shadow in that color use the text-shadow property, you can generate a text shadow directly with our [CSS Text Shadow Generator](#).

Here you see how black text with a 4 pixel rgb(198, 152, 152) colored shadow looks like.

```
.shadow{ text-shadow: 4px 4px 2px rgb(198, 152, 152) }
```

Border

The CSS property to change the border of an element to HunterLab 60.6047, 12.2978, 8.4982 is called "border". The border property can be set on classes, ids or directly on the HTML element.

This example shows the color as border, it can be applied via the CSS property "border" or "border-color".

```
.border, #border, table{ border:4px solid rgb(198, 152, 152) }
```


If only the border color should be changed use the property `border-color`.

```
.border{ border-color:rgb(198, 152, 152) }
```

If you want to add a box shadow in that color use:

Here you see how a box with a 4 pixel `rgb(198, 152, 152)` colored shadow looks like.

```
.boxshadow{ -moz-box-shadow:4px 4px 4px  
4px rgb(198, 152, 152); -webkit-box-  
shadow:4px 4px 4px 4px rgb(198, 152, 152);  
box-shadow:4px 4px 4px 4px rgb(198, 152,  
152) }
```

Background

The CSS property to change the background color of an element to HunterLab 60.6047, 12.2978, 8.4982 is called "background". The background property can be set on classes, ids or directly on the HTML element.

```
.background, #background, body{  
background: rgb(198, 152, 152) }
```

If only the background color should be changed can be used:

```
.background{ background-color: rgb(198,  
152, 152) }
```

This example shows the color as background, it is applied via the CSS property "background".

To optimize and compress your CSS code, you can use our [online CSS compressor and optimizer](#) based on csstidy. If you want to create a linear or radial gradient as background or border, check our [CSS Gradient Generator](#).

Hey! You found this booklet interesting? Support Converting Colors with the new Membership Option!

The pro membership hides all ads, plus gives you double the colors in the color bucket, and more awesome pro features!

[Learn more, Memberships starting at \\$2.50/m!](#)

**Follow me
on Twitter!**

@ConvertingColor