

Converting Colors

HunterLab(60.5399, 16.5187,
9.9065)

Have a look what the booklet for
HunterLab(60.5399, 16.5187,
9.9065) contains.

HunterLab(60.6520, 16.3648, 9.8647)	3
<i>Conversions</i>	4
<i>Details</i>	6
<i>Harmonies</i>	12
<i>Previews</i>	24
<i>Color Blindness Simulation</i>	28
<i>CSS Examples</i>	31

Color

**HunterLab(60.6520, 16.3648,
9.8647)**

Conversions

Conversions Part 1

Format	Color
Hex	CE9595
RGB	206, 149, 149
RGB Percent	81%, 58%, 58%
CMY	0.1922, 0.4157, 0.4157
CMYK	0.00, 0.28, 0.28, 0.19
HSL	0°, 37%, 70%
HSV	0°, 28%, 81%
XYZ	41.6259, 36.7867, 33.3404
YIQ	166.0430, 33.9720, 12.0840

Conversions

Conversions Part 2

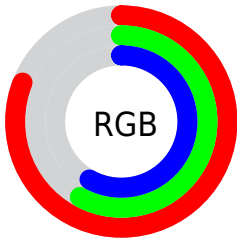
Format	Color
R _Y B	206, 149, 149
Decimal	13538709
CIE Lab	67.12, 21.44, 8.50
CIE LCh	67, 23.064, 21.632
Yxy	36.7884, 0.3725, 0.3292
Android (android.graphics.Color)	4291728789 (0xFFCE9595)
YUV	166.0430, -8.4022, 35.0423
Hunter-Lab	60.6520, 16.3648, 9.8647

Details

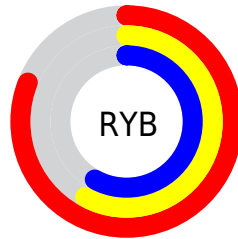
The HunterLab color **60.6520, 16.3648, 9.8647** is a light color, and the websafe version is hex **CC9999**. A complement of this color would be **74.1530, -19.9866, -1.3458**, and the grayscale version is **61.7941, -3.2972, 3.3574**.

A 20% lighter version of the original color is **82.6339, 13.8910, 10.6230**, and **40.1263, 14.9665, 7.9138** is the 20% darker color. If you saturate the color by 10%, you get **54.9869, 24.3662, 12.1395**, and if you desaturate by 10%, it is **66.7909, 8.6504, 7.7237**.

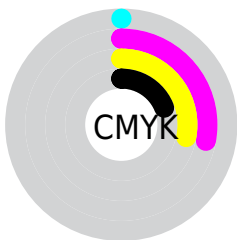
Distribution



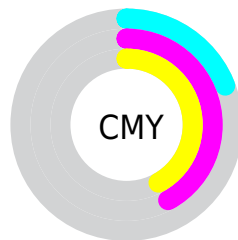
- Red (81%)
- Green (58%)
- Blue (58%)



- Red (81%)
- Yellow (58%)
- Blue (58%)



- Cyan (0%)
- Magenta (28%)
- Yellow (28%)
- Black (19%)





- Cyan (19%)
- Magenta (42%)
- Yellow (42%)

Brightness & Saturation Gradients


These gradients show how the HunterLab color 60.6520, 16.3648, 9.8647 changes by changing the brightness by 10 percent. The first figure shows a shift by +10% for each color and the second figure -10%.


Similar to the brightness gradients but the following saturation gradients show a change of the HunterLab color 60.6520, 16.3648, 9.8647 by changing the saturation by 10% instead.


 60.6520, 16.3648,
9.8647


 60.6520, 16.3648,
9.8647


182.3166, 17.6976,
19.6986

 50.0437, 15.8599,
8.8299


 83.8136, 17.1092,
11.9598

 40.1368, 15.2572,
7.7960


 96.2965, 17.3702,
13.0230

 30.9867, 14.5398,
6.7570


109.3440, 17.5648,
14.0990

 22.6621, 13.6897,
5.7011

122.9329, 17.6982,
15.1890

 15.2549, 12.6858,
4.6071

137.0422, 17.7747,
16.2935

 8.8769, 11.6102,
4.4536

151.6534, 17.7980,

0.0000, INF, NaN

17.4130

0.0000, NaN, NaN

166.7499, 17.7713,
18.5480

0.0000, NaN, NaN

■ 60.6520, 16.3648,
9.8647

■ 60.6520, 16.3648,
9.8647

■ 54.9869, 24.3662,
12.1395

■ 66.7909, 8.6504,
7.7237

■ 49.8849, 32.5446,
14.5123

■ 73.3233, 1.2622,
5.7186

■ 45.4573, 40.6378,
16.9051

■ 80.1902, -5.8150,
3.8418

■ 41.8217, 48.1930,
19.1745

■ 87.3440, -12.6129,
2.0793

■ 39.0821, 54.5782,
21.1163

■ 94.7469, -19.1697,
0.4155

■ 37.2919, 59.1421,
22.5160

■ 95.8446, -20.1081,
0.1821

■ 36.3826, 61.5968,
23.2725

■ 36.2246, 62.0334,
23.4074

Harmonies

Analogous

The Analogous color harmony consists of three colors that are next to each other on the color wheel.



60.6534, 17.7019, 0.4853



60.6520, 16.3648, 9.8647



60.6534, 9.5959, 16.3326

Triad

The Triadic color harmony groups three colors that are evenly spaced from another and form a triangle on the color wheel.



60.6534, 16.3623, 9.8657



60.6534, -18.0484, 13.9031



60.6534, -6.1047, -18.5392

Complementary

The Complementary color scheme is a pair of colors which are on the opposite of each other on the color wheel.



60.6520, 16.3648, 9.8647



74.1530, -19.9866, -1.3458

Split Complementary

Split-complementary colors differ from the complementary color scheme. The scheme consists of three colors, the original color and two neighbors of the complement color.



60.6534, -15.0891, -13.4704



60.6520, 16.3648, 9.8647



60.6534, -21.6763, 5.9888

Square

The Square scheme is like the rectangle color scheme, but the four colors are evenly spaced on the color wheel.



60.6534, 16.3623, 9.8657



60.6534, -10.3936, 18.3775



60.6534, -20.6304, -4.0897



60.6534, 4.2622, -17.0329

Rectangle

The Rectangle color scheme consists of four colors that form a rectangle on the color wheel.



60.6520, 16.3648, 9.8647



60.6534, 3.1509, 18.6429



60.6534, -20.6304, -4.0897



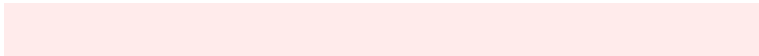
60.6534, -9.3760, -17.5211

Sweetspot

The Sweet Spot groups the original color and five complimentary colors.



60.6534, 16.3623, 9.8657



92.9644, 2.0023, 7.3852



62.5087, 25.7996, -16.4168



42.4114, 1.5781, 3.5920

0.0000, NaN, NaN



46.2646, -2.4686, 2.5136

Same Dimension

The Same Dimension uses a secret algorithm to generate beautiful new colors.



60.6534, 16.3623, 9.8657



72.9836, 26.6356, 14.2001



68.5086, 1.7869, 17.6379



33.4870, 1.1647, 2.8089



28.4258, 48.6777, 18.3680



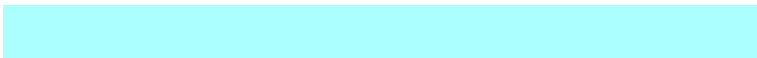
6.4568, 11.0550, 4.1722

Inverse Universe

The Inverse Universe completely reimagines the original color for something new.



74.1530, -19.9866, -1.3458



93.4758, -28.8232, -2.9132



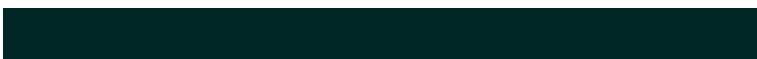
65.1831, -6.2951, -13.0582



35.6748, -4.6740, 1.0094



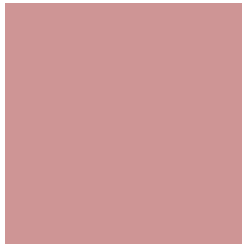
54.7004, -28.9969, -5.7747



12.4244, -6.5863, -1.3114

Previews

White Background



This preview shows how the HunterLab color 60.6520, 16.3648, 9.8647 looks on a white background.

Color Contrast Check

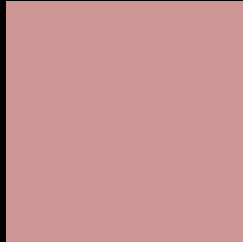
Large Text (above 18pt) WCAG AA × Fail

Any Text WCAG AA × Fail

Large Text (above 18pt) WCAG AAA × Fail

Any Text WCAG AAA × Fail

Black Background



This preview shows how the HunterLab color 60.6520, 16.3648, 9.8647 looks on a black background.

Color Contrast Check

Large Text (above 18pt) WCAG AA ✓ Pass

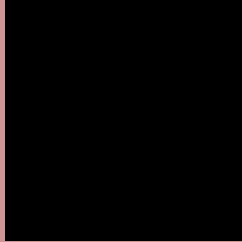
Any Text WCAG AA ✓ Pass

Large Text (above 18pt) WCAG AAA ✓ Pass

Any Text WCAG AAA ✓ Pass

If you want to check with other color combinations, try the [Color Contrast Checker](#).

HunterLab 60.6520, 16.3648, 9.8647 Background



This preview shows how black text looks on a background with the HunterLab color 60.6520, 16.3648, 9.8647.



This preview shows how white text looks on a background with the HunterLab color 60.6520, 16.3648,

9.8647.

Color Blindness Simulation

Color vision deficiency is a very complex topic, and I could not describe the different causes any better than Wikipedia does, so if you want to learn more, you should check out their [article about color blindness](#).

Dichromacy



Original Color

60.6520, 16.3648, 9.8647

Protanopia

60.7894, -2.6354, 6.3005

Deuteranopia

60.7245, 3.9664, 10.5359



Tritanopia

60.5277, 19.1871, 5.5026

Trichromacy



Original Color

60.6520, 16.3648, 9.8647

Protanomaly

60.6068, 3.9446, 7.5071

Deuteranomaly

60.7604, 8.4155, 10.2486

Tritanomaly

60.6727, 18.0889, 7.3993

Monochromacy



Original Color

60.6520, 16.3648, 9.8647

Achromatopsia

61.7516, -3.2949, 3.3551

Achromatomaly

61.2400, 3.5092, 5.5986

CSS Examples

Text

The CSS property to change the color of the text to HunterLab 60.6520, 16.3648, 9.8647 is called "color". The color property can be set on classes, ids or directly on the HTML element.

This example shows how text in the color `rgb(206, 149, 149)` looks like.

```
.text, #text, p{  
    color:rgb(206, 149, 149)  
}
```

If you want to add a text shadow in that color use the text-shadow property, you can generate a text shadow directly with our [CSS Text Shadow Generator](#).

Here you see how black text with a 4 pixel rgb(206, 149, 149) colored shadow looks like.

```
.shadow{ text-shadow: 4px 4px 2px rgb(206, 149, 149) }
```

Border

The CSS property to change the border of an element to HunterLab 60.6520, 16.3648, 9.8647 is called "border". The border property can be set on classes, ids or directly on the HTML element.

This example shows the color as border, it can be applied via the CSS property "border" or "border-color".

```
.border, #border, table{ border:4px solid rgb(206, 149, 149) }
```


If only the border color should be changed use the property `border-color`.

```
.border{ border-color:rgb(206, 149, 149) }
```

If you want to add a box shadow in that color use:

Here you see how a box with a 4 pixel `rgb(206, 149, 149)` colored shadow looks like.

```
.boxshadow{ -moz-box-shadow:4px 4px 4px 4px rgb(206, 149, 149); -webkit-box-shadow:4px 4px 4px 4px rgb(206, 149, 149); box-shadow:4px 4px 4px 4px rgb(206, 149, 149) }
```

Background

The CSS property to change the background color of an element to HunterLab 60.6520, 16.3648, 9.8647 is called "background". The background property can be set on classes, ids or directly on the HTML element.

```
.background, #background, body{  
background: rgb(206, 149, 149) }
```

If only the background color should be changed can be used:

```
.background{ background-color: rgb(206,  
149, 149) }
```

This example shows the color as background, it is applied via the CSS property "background".

To optimize and compress your CSS code, you can use our [online CSS compressor and optimizer](#) based on csstidy. If you want to create a linear or radial gradient as background or border, check our [CSS Gradient Generator](#).

Hey! You found this booklet interesting? Support Converting Colors with the new Membership Option!

The pro membership hides all ads, plus gives you double the colors in the color bucket, and more awesome pro features!

[Learn more, Memberships starting at \\$2.50/m!](#)

**Follow me
on Twitter!**

@ConvertingColor