

Converting Colors

HunterLab(60.5413, 3.1978,
18.7253)

Have a look what the booklet for
HunterLab(60.5413, 3.1978,
18.7253) contains.

HunterLab(60.4287, 3.3377, 18.5849)	3
<i>Conversions</i>	4
<i>Details</i>	6
<i>Harmonies</i>	12
<i>Previews</i>	24
<i>Color Blindness Simulation</i>	28
<i>CSS Examples</i>	31

Color

**HunterLab(60.4287, 3.3377,
18.5849)**

Conversions

Conversions Part 1

Format	Color
Hex	BE9D7C
RGB	190, 157, 124
RGB Percent	75%, 62%, 49%
CMY	0.2549, 0.3843, 0.5137
CMYK	0.00, 0.17, 0.35, 0.25
HSL	30°, 34%, 62%
HSV	30°, 35%, 75%
XYZ	36.9302, 36.5163, 24.1707
YIQ	163.1050, 30.2610, -3.2670

Conversions

Conversions Part 2

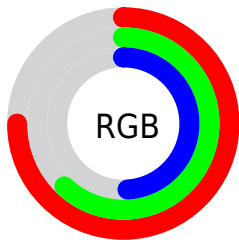
Format	Color
RYB	190, 190, 124
Decimal	12492156
CIELab	66.91, 7.47, 21.85
CIELCh	67, 23.096, 71.132
Yxy	36.5180, 0.3783, 0.3741
Android (android.graphics.Color)	4290682236 (0xFFBE9D7C)
YUV	163.1050, -19.2788, 23.5869
Hunter-Lab	60.4287, 3.3377, 18.5849

Details

The HunterLab color $60.4287, 3.3377, 18.5849$ is a light color, and the websafe version is hex $CC9966$. A complement of this color would be $56.6706, -5.7417, -16.1472$, and the grayscale version is $60.6308, -3.2351, 3.2942$.

A 20% lighter version of the original color is $83.6872, 2.5059, 22.1427$, and $39.9587, 3.4031, 14.8050$ is the 20% darker color. If you saturate the color by 10%, you get $57.4389, 6.0670, 21.7041$, and if you desaturate by 10%, it is $63.5502, 0.9179, 14.9304$.

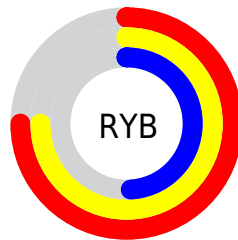
Distribution



Red (75%)

Green (62%)

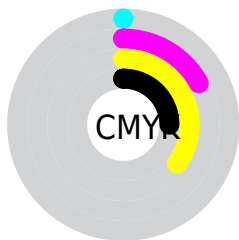
Blue (49%)



Red (75%)

Yellow (75%)

Blue (49%)

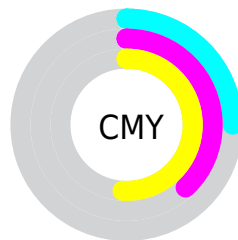


Cyan (0%)

Magenta (17%)

Yellow (35%)

Black (25%)



Cyan (25%)

Magenta (38%)

Yellow (51%)

Brightness & Saturation Gradients

These gradients show how the HunterLab color 60.4287, 3.3377, 18.5849 changes by changing the brightness by 10 percent. The first figure shows a shift by +10% for each color and the second figure -10%.

Similar to the brightness gradients but the following saturation gradients show a change of the HunterLab color 60.4287, 3.3377, 18.5849 by changing the saturation by 10% instead.

■ 60.4287, 3.3377,
18.5849

■ 60.4287, 3.3377,
18.5849

181.9942, -0.3447,
33.8971

■ 49.8342, 3.5104,
16.7434

■ 83.5648, 2.8192,
22.1280

■ 39.9422, 3.6214,
14.8305

■ 96.0359, 2.4874,
23.8510

■ 30.8082, 3.6594,
12.8198

■ 109.0722, 2.1114,
25.5525

■ 22.5014, 3.6117,
10.6692

122.6502, 1.6940,
27.2380

■ 15.1140, 3.4595,
8.5759

136.7491, 1.2378,
28.9121

■ 8.7487, 3.2904,
6.1241

151.3502, 0.7447,

0.0000, NaN, NaN

30.5782

0.0000, NaN, NaN

166.4370, 0.2167,
32.2391

0.0000, NaN, NaN

■ 60.4287, 3.3377,
18.5849

■ 60.4287, 3.3377,
18.5849

■ 57.4389, 6.0670,
21.7041

■ 63.5502, 0.9179,
14.9304

■ 54.5876, 9.1254,
24.2336

■ 66.7888, -1.2029,
10.7888

■ 51.8881, 12.5157,
26.1244

■ 70.1366, -3.0465,
6.2085

■ 49.3523, 16.2316,
27.3353

■ 73.5850, -4.6333,
1.2328

■ 46.9920, 20.2492,
27.8440

■ 77.1264, -5.9835,
-4.0996

■ 44.8171, 24.5201,
27.6654

■ 80.7540, -7.1165,
-9.7541

■ 43.7421, 26.8101,
27.4231

■ 84.3849, -8.4743,
-14.6235

■ 87.4312, -13.3125,
-10.5150

■ 90.5349, -18.0878,
-6.4867

Harmonies

Analogous

The Analogous color harmony consists of three colors that are next to each other on the color wheel.



60.4301, 12.4840, 14.4523



60.4287, 3.3377, 18.5849



60.4301, -7.0177, 19.0563

Triad

The Triadic color harmony groups three colors that are evenly spaced from another and form a triangle on the color wheel.



60.4301, 3.3355, 18.5857



60.4301, -21.5200, -0.4764



60.4301, 10.4111, -12.7555

Complementary

The Complementary color scheme is a pair of colors which are on the opposite of each other on the color wheel.



60.4287, 3.3377, 18.5849



56.6706, -5.7417, -16.1472

Split Complementary

Split-complementary colors differ from the complementary color scheme. The scheme consists of three colors, the original color and two neighbors of the complement color.



60.4301, 0.6582, -18.3595



60.4287, 3.3377, 18.5849



60.4301, -17.4818, -10.5172

Square

The Square scheme is like the rectangle color scheme, but the four colors are evenly spaced on the color wheel.



60.4301, 3.3355, 18.5857



60.4301, -20.9097, 9.0901



60.4301, -9.5221, -17.4777



60.4301, 16.7548, -3.1503

Rectangle

The Rectangle color scheme consists of four colors that form a rectangle on the color wheel.



60.4287, 3.3377, 18.5849



60.4301, -13.1648, 17.3393



60.4301, -9.5221, -17.4777



60.4301, 7.3962, -15.2371

Sweetspot

The Sweet Spot groups the original color and five complimentary colors.



60.4301, 3.3355, 18.5857



91.9524, -2.7992, 11.7728



52.7230, 24.6364, -2.9528



42.7898, -1.1435, 5.9239



98.8636, -5.2751, 5.3714



45.2661, -2.4153, 2.4594

Same Dimension

The Same Dimension uses a secret algorithm to generate beautiful new colors.



60.4301, 3.3355, 18.5857



78.1349, 7.3757, 28.4167



70.1636, -12.6623, 26.8988



32.0988, -1.0434, 3.9189



35.8886, 21.3533, 22.4882



7.9710, 2.3582, 4.9530

Inverse Universe

The Inverse Universe completely reimagines the original color for something new.



56.6706, -5.7417, -16.1472



71.9915, -7.3295, -28.4715



47.3482, 10.6897, -31.6389



31.6104, -2.2379, -0.5784



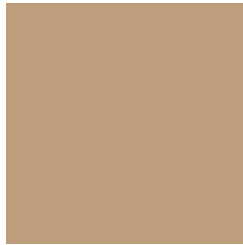
28.4074, 6.7076, -49.9864



6.6855, -0.5620, -7.1430

Previews

White Background



This preview shows how the HunterLab color 60.4287, 3.3377, 18.5849 looks on a white background.

Color Contrast Check

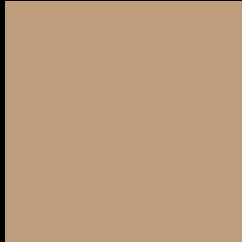
Large Text (above 18pt) WCAG AA × Fail

Any Text WCAG AA × Fail

Large Text (above 18pt) WCAG AAA × Fail

Any Text WCAG AAA × Fail

Black Background



This preview shows how the HunterLab color 60.4287, 3.3377, 18.5849 looks on a black background.

Color Contrast Check

Large Text (above 18pt) WCAG AA ✓ Pass

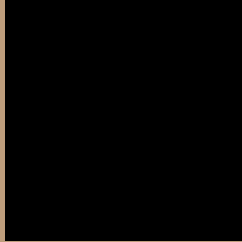
Any Text WCAG AA ✓ Pass

Large Text (above 18pt) WCAG AAA ✓ Pass

Any Text WCAG AAA ✓ Pass

If you want to check with other color combinations, try the [Color Contrast Checker](#).

HunterLab 60.4287, 3.3377, 18.5849 Background



This preview shows how black text looks on a background with the HunterLab color 60.4287, 3.3377, 18.5849.



This preview shows how white text looks on a background with the HunterLab color 60.4287, 3.3377,

Color Blindness Simulation

Color vision deficiency is a very complex topic, and I could not describe the different causes any better than Wikipedia does, so if you want to learn more, you should check out their [article about color blindness](#).

Dichromacy



Original Color

60.4287, 3.3377, 18.5849

Protanopia

60.6015, -4.7768, 17.6145

Deuteranopia

60.3644, 4.5557, 18.5467



Tritanopia

60.4733, 12.4980, 3.5098

Trichromacy



Original Color

60.4287, 3.3377, 18.5849

Protanomaly

60.5800, -1.9053, 17.9774

Deuteranomaly

60.2566, 4.1941, 18.4403

Tritanomaly

60.5133, 9.0622, 9.5877

Monochromacy



Original Color

60.4287, 3.3377, 18.5849

Achromatopsia

60.5188, -3.2291, 3.2881

Achromatomaly

60.4516, -1.2522, 9.3406

CSS Examples

Text

The CSS property to change the color of the text to HunterLab 60.4287, 3.3377, 18.5849 is called "color". The color property can be set on classes, ids or directly on the HTML element.

This example shows how text in the color `rgb(190, 157, 124)` looks like.

```
.text, #text, p{  
    color:rgb(190, 157, 124)  
}
```

If you want to add a text shadow in that color use the text-shadow property, you can generate a text shadow directly with our [CSS Text Shadow Generator](#).

Here you see how black text with a 4 pixel rgb(190, 157, 124) colored shadow looks like.

```
.shadow{ text-shadow: 4px 4px 2px rgb(190, 157, 124) }
```

Border

The CSS property to change the border of an element to HunterLab 60.4287, 3.3377, 18.5849 is called "border". The border property can be set on classes, ids or directly on the HTML element.

This example shows the color as border, it can be applied via the CSS property "border" or "border-color".

```
.border, #border, table{ border:4px solid rgb(190, 157, 124) }
```


If only the border color should be changed use the property `border-color`.

```
.border{ border-color:rgb(190, 157, 124) }
```

If you want to add a box shadow in that color use:

Here you see how a box with a 4 pixel `rgb(190, 157, 124)` colored shadow looks like.

```
.boxshadow{ -moz-box-shadow:4px 4px 4px 4px rgb(190, 157, 124); -webkit-box-shadow:4px 4px 4px 4px rgb(190, 157, 124); box-shadow:4px 4px 4px 4px rgb(190, 157, 124) }
```

Background

The CSS property to change the background color of an element to HunterLab 60.4287, 3.3377, 18.5849 is called "background". The background property can be set on classes, ids or directly on the HTML element.

```
.background, #background, body{  
background: rgb(190, 157, 124) }
```

If only the background color should be changed can be used:

```
.background{ background-color: rgb(190,  
157, 124) }
```

This example shows the color as background, it is applied via the CSS property "background".

To optimize and compress your CSS code, you can use our [online CSS compressor and optimizer](#) based on csstidy. If you want to create a linear or radial gradient as background or border, check our [CSS Gradient Generator](#).

Hey! You found this booklet interesting? Support Converting Colors with the new Membership Option!

The pro membership hides all ads, plus gives you double the colors in the color bucket, and more awesome pro features!

[Learn more, Memberships starting at \\$2.50/m!](#)

**Follow me
on Twitter!**

@ConvertingColor