

Converting Colors

HunterLab(60.5853, 17.4403,
17.6744)

Have a look what the booklet for
HunterLab(60.5853, 17.4403,
17.6744) contains.

HunterLab(60.4749, 17.4607, 17.5480)	3
<i>Conversions</i>	4
<i>Details</i>	6
<i>Harmonies</i>	12
<i>Previews</i>	24
<i>Color Blindness Simulation</i>	28
<i>CSS Examples</i>	31

Color

**HunterLab(60.4749, 17.4607,
17.5480)**

Conversions

Conversions Part 1

Format	Color
Hex	D59380
RGB	213, 147, 128
RGB Percent	84%, 58%, 50%
CMY	0.1647, 0.4235, 0.4980
CMYK	0.00, 0.31, 0.40, 0.16
HSL	13°, 50%, 67%
HSV	13°, 40%, 84%
XYZ	41.7706, 36.5721, 25.2797
YIQ	164.5680, 45.4350, 8.0830

Conversions

Conversions Part 2

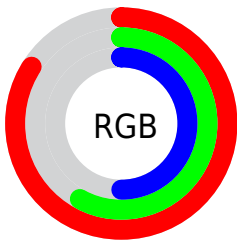
Format	Color
R _Y B	213, 152, 128
Decimal	13996928
CIE Lab	66.96, 22.58, 20.10
CIE LCh	67, 30.230, 41.683
Yxy	36.5739, 0.4031, 0.3529
Android (android.graphics.Color)	4292187008 (0xFFD59380)
YUV	164.5680, -18.0280, 42.4749
Hunter-Lab	60.4749, 17.4607, 17.5480

Details

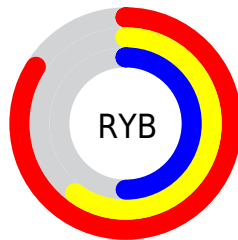
The HunterLab color **60.4749, 17.4607, 17.5480** is a light color, and the websafe version is hex **CC9999**. A complement of this color would be **69.2641, -17.6042, -11.5138**, and the grayscale version is **61.2225, -3.2667, 3.3263**.

A 20% lighter version of the original color is **81.4675, 11.8296, 18.5915**, and **39.9977, 16.1550, 13.9642** is the 20% darker color. If you saturate the color by 10%, you get **55.9388, 23.7597, 20.2290**, and if you desaturate by 10%, it is **65.3556, 11.4914, 14.5635**.

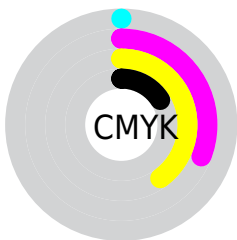
Distribution



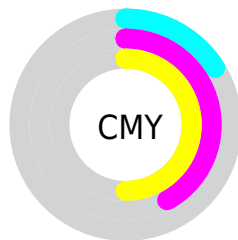
- Red (84%)
- Green (58%)
- Blue (50%)



- Red (84%)
- Yellow (60%)
- Blue (50%)



- Cyan (0%)
- Magenta (31%)
- Yellow (40%)
- Black (16%)



- Cyan (16%)
- Magenta (42%)
- Yellow (50%)

Brightness & Saturation Gradients

These gradients show how the HunterLab color 60.4749, 17.4607, 17.5480 changes by changing the brightness by 10 percent. The first figure shows a shift by +10% for each color and the second figure -10%.

Similar to the brightness gradients but the following saturation gradients show a change of the HunterLab color 60.4749, 17.4607, 17.5480 by changing the saturation by 10% instead.

60.4749, 17.4607,
17.5480

60.4749, 17.4607,
17.5480

182.0610, 19.1971,
32.1142

49.8776, 16.9019,
15.8175

83.6164, 18.3056,
20.8928

39.9825, 16.2431,
14.0256

96.0899, 18.6142,
22.5257

30.8452, 15.4672,
12.1486

109.1285, 18.8548,
24.1419

22.5346, 14.5564,
10.1484

122.7087, 19.0326,
25.7464

15.1432, 13.4911,
8.1007

136.8098, 19.1521,
27.3431

8.7755, 12.4018,
6.1428

151.4131, 19.2173,

0.0000, INF, NaN

28.9351

0.0000, NaN, NaN

166.5018, 19.2313,
30.5247

0.0000, NaN, NaN

■ 60.4749, 17.4607,
17.5480

■ 60.4749, 17.4607,
17.5480

■ 55.9388, 23.7597,
20.2290

■ 65.3556, 11.4914,
14.5635

■ 51.7951, 30.3424,
22.5131

■ 70.5312, 5.8711,
11.3434

■ 48.1036, 37.0854,
24.2933

■ 75.9652, 0.5834,
7.9419

■ 44.9249, 43.7777,
25.4577

■ 81.6258, -4.3982,
4.3978

■ 42.3141, 50.1076,
25.9224

■ 87.4866, -9.1049,
0.7393

■ 40.3020, 55.6539,
25.7997

■ 93.4980, -13.7224,
-2.6209

■ 40.2857, 55.7005,
25.7990

■ 96.3775, -18.1769,
0.8678

Harmonies

Analogous

The Analogous color harmony consists of three colors that are next to each other on the color wheel.



60.4764, 24.4222, 8.0933



60.4749, 17.4607, 17.5480



60.4764, 5.1675, 22.3928

Triad

The Triadic color harmony groups three colors that are evenly spaced from another and form a triangle on the color wheel.



60.4764, 17.4579, 17.5489



60.4764, -26.0051, 10.5664



60.4764, 2.1303, -26.3143

Complementary

The Complementary color scheme is a pair of colors which are on the opposite of each other on the color wheel.



60.4749, 17.4607, 17.5480



69.2641, -17.6042, -11.5138

Split Complementary

Split-complementary colors differ from the complementary color scheme. The scheme consists of three colors, the original color and two neighbors of the complement color.



60.4764, -11.1931, -25.2399



60.4749, 17.4607, 17.5480



60.4764, -26.6626, -1.9387

Square

The Square scheme is like the rectangle color scheme, but the four colors are evenly spaced on the color wheel.



60.4764, 17.4579, 17.5489



60.4764, -19.5812, 19.0152



60.4764, -21.4639, -15.5929



60.4764, 15.0669, -18.2680

Rectangle

The Rectangle color scheme consists of four colors that form a rectangle on the color wheel.



60.4749, 17.4607, 17.5480



60.4764, -3.9926, 23.1769



60.4764, -21.4639, -15.5929



60.4764, -2.4638, -27.0485

Sweetspot

The Sweet Spot groups the original color and five complimentary colors.



60.4764, 17.4579, 17.5489



91.6246, 2.1193, 10.6776



57.8845, 37.3564, -16.3087



41.9791, 1.3711, 5.1971

0.0000, NaN, NaN



46.2646, -2.4686, 2.5136

Same Dimension

The Same Dimension uses a secret algorithm to generate beautiful new colors.



60.4764, 17.4579, 17.5489



69.3343, 28.0135, 24.3619



72.1555, -3.7766, 27.6146



35.8701, 0.1585, 3.6581



31.6861, 42.9163, 20.2761



8.5533, 8.3258, 5.4163

Inverse Universe

The Inverse Universe completely reimagines the original color for something new.



69.2641, -17.6042, -11.5138



82.1337, -23.5457, -18.0965



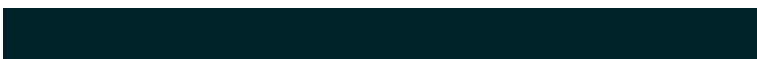
56.4600, 2.8525, -31.2659



36.8984, -3.8807, 0.2732



44.2879, -14.3217, -24.4396



11.4087, -4.2443, -5.0976

Previews

White Background



This preview shows how the HunterLab color 60.4749, 17.4607, 17.5480 looks on a white background.

Color Contrast Check

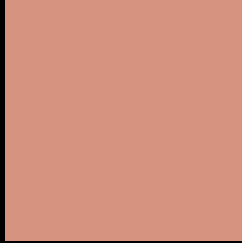
Large Text (above 18pt) WCAG AA × Fail

Any Text WCAG AA × Fail

Large Text (above 18pt) WCAG AAA × Fail

Any Text WCAG AAA × Fail

Black Background



This preview shows how the HunterLab color 60.4749, 17.4607, 17.5480 looks on a black background.

Color Contrast Check

Large Text (above 18pt) WCAG AA ✓ Pass

Any Text WCAG AA ✓ Pass

Large Text (above 18pt) WCAG AAA ✓ Pass

Any Text WCAG AAA ✓ Pass

If you want to check with other color combinations, try the [Color Contrast Checker](#).

HunterLab 60.4749, 17.4607, 17.5480 Background



This preview shows how black text looks on a background with the HunterLab color 60.4749, 17.4607, 17.5480.



This preview shows how white text looks on a background with the HunterLab color 60.4749, 17.4607,

17.5480.

Color Blindness Simulation

Color vision deficiency is a very complex topic, and I could not describe the different causes any better than Wikipedia does, so if you want to learn more, you should check out their [article about color blindness](#).

Dichromacy



Original Color

60.4749, 17.4607, 17.5480

Protanopia

60.6157, -4.3223, 14.4923

Deuteranopia

60.5778, 3.9237, 18.0774



Tritanopia

60.3532, 23.5680, 7.5687

Trichromacy



Original Color

60.4749, 17.4607, 17.5480

Protanomaly

60.3094, 3.3300, 15.4054

Deuteranomaly

60.3795, 8.9669, 17.6462

Tritanomaly

60.2387, 21.4541, 11.1282

Monochromacy



Original Color

60.4749, 17.4607, 17.5480

Achromatopsia

61.3402, -3.2730, 3.3327

Achromatomaly

60.5523, 3.6521, 8.2895

CSS Examples

Text

The CSS property to change the color of the text to HunterLab 60.4749, 17.4607, 17.5480 is called "color". The color property can be set on classes, ids or directly on the HTML element.

This example shows how text in the color `rgb(213, 147, 128)` looks like.

```
.text, #text, p{  
    color:rgb(213, 147, 128)  
}
```

If you want to add a text shadow in that color use the text-shadow property, you can generate a text shadow directly with our [CSS Text Shadow Generator](#).

Here you see how black text with a 4 pixel rgb(213, 147, 128) colored shadow looks like.

```
.shadow{ text-shadow: 4px 4px 2px rgb(213, 147, 128) }
```

Border

The CSS property to change the border of an element to HunterLab 60.4749, 17.4607, 17.5480 is called "border". The border property can be set on classes, ids or directly on the HTML element.

This example shows the color as border, it can be applied via the CSS property "border" or "border-color".

```
.border, #border, table{ border:4px solid rgb(213, 147, 128) }
```


If only the border color should be changed use the property border-color.

```
.border{ border-color:rgb(213, 147, 128) }
```

If you want to add a box shadow in that color use:

Here you see how a box with a 4 pixel rgb(213, 147, 128) colored shadow looks like.

```
.boxshadow{ -moz-box-shadow:4px 4px 4px  
4px rgb(213, 147, 128); -webkit-box-  
shadow:4px 4px 4px 4px rgb(213, 147, 128);  
box-shadow:4px 4px 4px 4px rgb(213, 147,  
128) }
```

Background

The CSS property to change the background color of an element to HunterLab 60.4749, 17.4607, 17.5480 is called "background". The background property can be set on classes, ids or directly on the HTML element.

```
.background, #background, body{  
background: rgb(213, 147, 128) }
```

If only the background color should be changed can be used:

```
.background{ background-color: rgb(213,  
147, 128) }
```

This example shows the color as background, it is applied via the CSS property "background".

To optimize and compress your CSS code, you can use our [online CSS compressor and optimizer](#) based on csstidy. If you want to create a linear or radial gradient as background or border, check our [CSS Gradient Generator](#).

Hey! You found this booklet interesting? Support Converting Colors with the new Membership Option!

The pro membership hides all ads, plus gives you double the colors in the color bucket, and more awesome pro features!

[Learn more, Memberships starting at \\$2.50/m!](#)

**Follow me
on Twitter!**

@ConvertingColor