

Converting Colors

HunterLab(60.6003, 9.4846,
20.5510)

Have a look what the booklet for
HunterLab(60.6003, 9.4846,
20.5510) contains.

HunterLab(60.6720, 9.5926, 20.4985)	3
<i>Conversions</i>	4
<i>Details</i>	6
<i>Harmonies</i>	12
<i>Previews</i>	24
<i>Color Blindness Simulation</i>	28
<i>CSS Examples</i>	31

Color

**HunterLab(60.6720, 9.5926,
20.4985)**

Conversions

Conversions Part 1

Format	Color
Hex	CB9977
RGB	203, 153, 119
RGB Percent	80%, 60%, 47%
CMY	0.2039, 0.4000, 0.5333
CMYK	0.00, 0.25, 0.41, 0.20
HSL	24°, 45%, 63%
HSV	24°, 41%, 80%
XYZ	39.3496, 36.8109, 22.4840
YIQ	164.0740, 40.7140, 0.0260

Conversions

Conversions Part 2

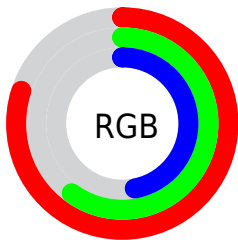
Format	Color
R_{YB}	203, 176, 119
Decimal	13343095
CIE _{Lab}	67.14, 14.31, 25.12
CIE _{LCh}	67, 28.913, 60.335
Yxy	36.8127, 0.3989, 0.3732
Android (android.graphics.Color)	4291533175 (0xFFFCB9977)
YUV	164.0740, -22.2215, 34.1381
Hunter-Lab	60.6720, 9.5926, 20.4985

Details

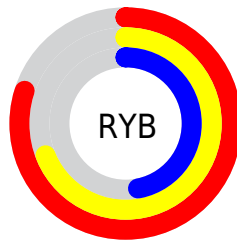
The HunterLab color **60.6720, 9.5926, 20.4985** is a light color, and the websafe version is hex **CC9966**. A complement of this color would be **60.5048, -9.7823, -18.2540**, and the grayscale version is **61.0374, -3.2568, 3.3163**.

A 20% lighter version of the original color is **82.9614, 7.3738, 23.7147**, and **40.1846, 9.1422, 16.3724** is the 20% darker color. If you saturate the color by 10%, you get **57.1128, 13.7544, 23.2566**, and if you desaturate by 10%, it is **64.4293, 5.7750, 17.2180**.

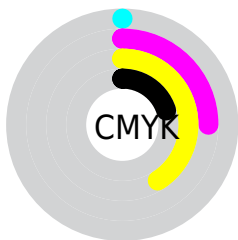
Distribution



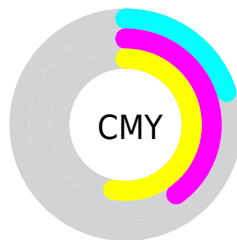
- Red (80%)
- Green (60%)
- Blue (47%)



- Red (80%)
- Yellow (69%)
- Blue (47%)



- Cyan (0%)
- Magenta (25%)
- Yellow (41%)
- Black (20%)



- Cyan (20%)
- Magenta (40%)
- Yellow (53%)

Brightness & Saturation Gradients

These gradients show how the HunterLab color 60.6720, 9.5926, 20.4985 changes by changing the brightness by 10 percent. The first figure shows a shift by +10% for each color and the second figure -10%.

Similar to the brightness gradients but the following saturation gradients show a change of the HunterLab color 60.6720, 9.5926, 20.4985 by changing the saturation by 10% instead.

60.6720, 9.5926,
20.4985

60.6720, 9.5926,
20.4985

182.3455, 8.4001,
37.2160

50.0624, 9.4253,
18.4492

83.8359, 9.7042,
24.4147

40.1542, 9.1768,
16.3102

96.3198, 9.6673,
26.3073

31.0027, 8.8316,
14.0505

109.3684, 9.5747,
28.1694

22.6765, 8.3727,
11.6227

122.9582, 9.4304,
30.0077

15.2675, 7.7759,
9.4867

137.0684, 9.2381,
31.8276

8.8883, 7.0897,
6.2218

151.6806, 9.0006,

0.0000, INF, NaN

33.6334

0.0000, NaN, NaN

166.7780, 8.7205,
35.4286

0.0000, NaN, NaN

■ 60.6720, 9.5926,
20.4985

■ 60.6720, 9.5926,
20.4985

■ 57.1128, 13.7544,
23.2566

■ 64.4293, 5.7750,
17.2180

■ 53.7689, 18.2700,
25.4207

■ 68.3609, 2.2949,
13.4774

■ 50.6650, 23.1189,
26.9240

■ 72.4510, -0.8712,
9.3356

■ 47.8252, 28.2534,
27.7118

■ 76.6847, -3.7481,
4.8431

■ 45.2727, 33.5855,
27.7631

■ 81.0486, -6.3609,
0.0429

■ 43.3104, 38.2022,
27.3565

■ 85.5313, -8.7344,
-5.0283

■ 89.9010, -12.1233,
-7.2097

■ 93.8503, -18.2436,
-2.2578

■ 95.6224, -20.9166,
-0.1049

Harmonies

Analogous

The Analogous color harmony consists of three colors that are next to each other on the color wheel.



60.6734, 19.7965, 14.0955



60.6720, 9.5926, 20.4985



60.6734, -3.3863, 22.5450

Triad

The Triadic color harmony groups three colors that are evenly spaced from another and form a triangle on the color wheel.



60.6734, 9.5900, 20.4993



60.6734, -26.2003, 3.1638



60.6734, 9.8633, -20.9224

Complementary

The Complementary color scheme is a pair of colors which are on the opposite of each other on the color wheel.



60.6720, 9.5926, 20.4985



60.5048, -9.7823, -18.2540

Split Complementary

Split-complementary colors differ from the complementary color scheme. The scheme consists of three colors, the original color and two neighbors of the complement color.



60.6734, -3.0948, -25.5014



60.6720, 9.5926, 20.4985



60.6734, -23.2827, -9.9293

Square

The Square scheme is like the rectangle color scheme, but the four colors are evenly spaced on the color wheel.



60.6734, 9.5900, 20.4993



60.6734, -23.4088, 13.9013



60.6734, -15.0864, -21.1138



60.6734, 19.9634, -9.6382

Rectangle

The Rectangle color scheme consists of four colors that form a rectangle on the color wheel.



60.6720, 9.5926, 20.4985



60.6734, -11.6588, 21.5890



60.6734, -15.0864, -21.1138



60.6734, 5.6631, -23.3909

Sweetspot

The Sweet Spot groups the original color and five complimentary colors.



60.6734, 9.5900, 20.4993



93.3321, -0.8211, 12.5165



53.6378, 34.0065, -8.0631



42.8514, -0.1374, 6.1294

0.0000, NaN, NaN



46.2646, -2.4686, 2.5136

Same Dimension

The Same Dimension uses a secret algorithm to generate beautiful new colors.



60.6734, 9.5900, 20.4993



74.2235, 17.4003, 29.8651



72.7184, -10.9448, 30.3869



34.5642, -0.6901, 3.9963



34.7937, 29.8473, 21.9622



8.7882, 4.6542, 5.4967

Inverse Universe

The Inverse Universe completely reimagines the original color for something new.



60.5048, -9.7823, -18.2540



73.9358, -12.7203, -30.5309



48.4938, 10.9448, -39.0053



34.5479, -2.8622, -0.3348



34.0615, -0.4477, -41.6075



8.6319, -1.5471, -7.4493

Previews

White Background



This preview shows how the HunterLab color 60.6720, 9.5926, 20.4985 looks on a white background.

Color Contrast Check

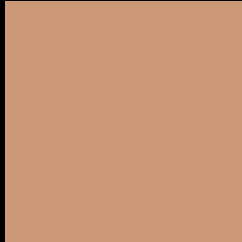
Large Text (above 18pt) WCAG AA × Fail

Any Text WCAG AA × Fail

Large Text (above 18pt) WCAG AAA × Fail

Any Text WCAG AAA × Fail

Black Background



This preview shows how the HunterLab color 60.6720, 9.5926, 20.4985 looks on a black background.

Color Contrast Check

Large Text (above 18pt) WCAG AA ✓ Pass

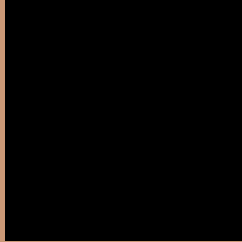
Any Text WCAG AA ✓ Pass

Large Text (above 18pt) WCAG AAA ✓ Pass

Any Text WCAG AAA ✓ Pass

If you want to check with other color combinations, try the [Color Contrast Checker](#).

HunterLab 60.6720, 9.5926, 20.4985 Background



This preview shows how black text looks on a background with the HunterLab color 60.6720, 9.5926, 20.4985.



This preview shows how white text looks on a background with the HunterLab color 60.6720, 9.5926,

Color Blindness Simulation

Color vision deficiency is a very complex topic, and I could not describe the different causes any better than Wikipedia does, so if you want to learn more, you should check out their [article about color blindness](#).

Dichromacy



Original Color

60.6720, 9.5926, 20.4985

Protanopia

60.6330, -4.7935, 18.6314

Deuteranopia

60.7382, 4.1355, 20.7681



Tritanopia

60.7852, 18.6652, 5.7883

Trichromacy



Original Color

60.6720, 9.5926, 20.4985

Protanomaly

60.4282, 0.3511, 19.1762

Deuteranomaly

60.7908, 5.7369, 20.8431

Tritanomaly

60.7850, 15.1831, 11.9846

Monochromacy



Original Color

60.6720, 9.5926, 20.4985

Achromatopsia

60.9293, -3.2510, 3.3104

Achromatomaly

60.6174, 0.7420, 9.9617

CSS Examples

Text

The CSS property to change the color of the text to HunterLab 60.6720, 9.5926, 20.4985 is called "color". The color property can be set on classes, ids or directly on the HTML element.

This example shows how text in the color `rgb(203, 153, 119)` looks like.

```
.text, #text, p{  
    color:rgb(203, 153, 119)  
}
```

If you want to add a text shadow in that color use the text-shadow property, you can generate a text shadow directly with our [CSS Text Shadow Generator](#).

Here you see how black text with a 4 pixel rgb(203, 153, 119) colored shadow looks like.

```
.shadow{ text-shadow: 4px 4px 2px rgb(203, 153, 119) }
```

Border

The CSS property to change the border of an element to HunterLab 60.6720, 9.5926, 20.4985 is called "border". The border property can be set on classes, ids or directly on the HTML element.

This example shows the color as border, it can be applied via the CSS property "border" or "border-color".

```
.border, #border, table{ border:4px solid rgb(203, 153, 119) }
```


If only the border color should be changed use the property `border-color`.

```
.border{ border-color:rgb(203, 153, 119) }
```

If you want to add a box shadow in that color use:

Here you see how a box with a 4 pixel `rgb(203, 153, 119)` colored shadow looks like.

```
.boxshadow{ -moz-box-shadow:4px 4px 4px  
4px rgb(203, 153, 119); -webkit-box-  
shadow:4px 4px 4px 4px rgb(203, 153, 119);  
box-shadow:4px 4px 4px 4px rgb(203, 153,  
119) }
```

Background

The CSS property to change the background color of an element to HunterLab 60.6720, 9.5926, 20.4985 is called "background". The background property can be set on classes, ids or directly on the HTML element.

```
.background, #background, body{  
background: rgb(203, 153, 119) }
```

If only the background color should be changed can be used:

```
.background{ background-color: rgb(203,  
153, 119) }
```

This example shows the color as background, it is applied via the CSS property "background".

To optimize and compress your CSS code, you can use our [online CSS compressor and optimizer](#) based on csstidy. If you want to create a linear or radial gradient as background or border, check our [CSS Gradient Generator](#).

Hey! You found this booklet interesting? Support Converting Colors with the new Membership Option!

The pro membership hides all ads, plus gives you double the colors in the color bucket, and more awesome pro features!

[Learn more, Memberships starting at \\$2.50/m!](#)

**Follow me
on Twitter!**

@ConvertingColor