

Converting Colors

HunterLab(60.6459, 35.8460,
5.0329)

Have a look what the booklet for
HunterLab(60.6459, 35.8460,
5.0329) contains.

HunterLab(60.6459, 35.8460, 5.0329)	3
<i>Conversions</i>	4
<i>Details</i>	6
<i>Harmonies</i>	12
<i>Previews</i>	24
<i>Color Blindness Simulation</i>	28
<i>CSS Examples</i>	31

Color

**HunterLab(60.6459, 35.8460,
5.0329)**

Conversions

Conversions Part 1

Format	Color
Hex	E886A1
RGB	232, 134, 161
RGB Percent	91%, 53%, 63%
CMY	0.0902, 0.4745, 0.3686
CMYK	0.00, 0.42, 0.31, 0.09
HSL	343°, 68%, 72%
HSV	343°, 42%, 91%
XYZ	48.2369, 36.7793, 38.2750
YIQ	166.3800, 49.7410, 29.1730

Conversions

Conversions Part 2

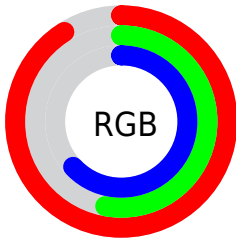
Format	Color
R_{YB}	232, 134, 161
Decimal	15238817
CIE _{Lab}	67.11, 40.59, 2.15
CIE _{LCh}	67, 40.642, 3.027
Yxy	36.7811, 0.3912, 0.2983
Android (android.graphics.Color)	4293428897 (0xFFE886A1)
YUV	166.3800, -2.6523, 57.5487
Hunter-Lab	60.6459, 35.8460, 5.0329

Details

The HunterLab color **60.6459, 35.8460, 5.0329** is a light color, and the websafe version is hex **FF99CC**. A complement of this color would be **81.9697, -35.1981, 8.1135**, and the grayscale version is **61.9056, -3.3031, 3.3634**.

A 20% lighter version of the original color is **79.1284, 23.5664, 0.4931**, and **40.1983, 33.0600, 3.5907** is the 20% darker color. If you saturate the color by 10%, you get **55.2286, 45.5292, 6.4202**, and if you desaturate by 10%, it is **66.7431, 25.9810, 4.2544**.

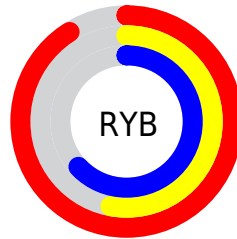
Distribution



Red (91%)

Green (53%)

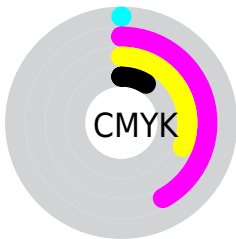
Blue (63%)



Red (91%)

Yellow (53%)

Blue (63%)

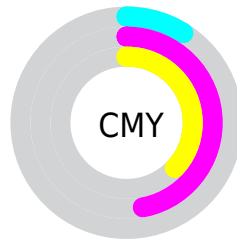


Cyan (0%)

Magenta (42%)

Yellow (31%)

Black (9%)



Cyan (9%)

Magenta (47%)

Yellow (37%)

Brightness & Saturation Gradients

These gradients show how the HunterLab color 60.6459, 35.8460, 5.0329 changes by changing the brightness by 10 percent. The first figure shows a shift by +10% for each color and the second figure -10%.

Similar to the brightness gradients but the following saturation gradients show a change of the HunterLab color 60.6459, 35.8460, 5.0329 by changing the saturation by 10% instead.

60.6459, 35.8460,
5.0329

60.6459, 35.8460,
5.0329

182.3079, 43.5279,
12.4442

50.0380, 34.5323,
4.3457

83.8069, 38.1407,
6.4977

40.1315, 33.1030,
3.6874

96.2894, 39.1442,
7.2710

30.9819, 31.5497,
3.0600

109.3367, 40.0604,
8.0710

22.6578, 29.8779,
2.4641

122.9252, 40.8956,
8.8967

15.2511, 28.1304,
1.8993

137.0342, 41.6554,
9.7475

8.8735, 26.6305,
1.4856

151.6452, 42.3446,

0.0000, INF, NaN

10.6228

0.0000, NaN, NaN

166.7415, 42.9674,
11.5219

0.0000, NaN, NaN

■ 60.6459, 35.8460,
5.0329

■ 60.6459, 35.8460,
5.0329

■ 55.2286, 45.5292,
6.4202

■ 66.7431, 25.9810,
4.2544

■ 50.6094, 54.6021,
8.4651

■ 73.4068, 16.1960,
3.9978

■ 46.9116, 62.4237,
11.1475

■ 80.5477, 6.6097,
4.1780

■ 44.2267, 68.2585,
14.3249

■ 88.0925, -2.7348,
4.7175

■ 42.5721, 71.5503,
17.7185

■ 95.9826, -11.8374,
5.5517

■ 41.8629, 72.5732,
20.2156

■ 97.9264, -12.6260,
2.8401

Harmonies

Analogous

The Analogous color harmony consists of three colors that are next to each other on the color wheel.



60.6474, 31.2329, -13.8357



60.6459, 35.8460, 5.0329



60.6474, 29.0029, 18.7959

Triad

The Triadic color harmony groups three colors that are evenly spaced from another and form a triangle on the color wheel.



60.6474, 35.8429, 5.0342



60.6474, -21.1702, 25.1162



60.6474, -18.3197, -34.5250

Complementary

The Complementary color scheme is a pair of colors which are on the opposite of each other on the color wheel.



60.6459, 35.8460, 5.0329



81.9697, -35.1981, 8.1135

Split Complementary

Split-complementary colors differ from the complementary color scheme. The scheme consists of three colors, the original color and two neighbors of the complement color.



60.6474, -29.8959, -17.8070



60.6459, 35.8460, 5.0329



60.6474, -31.4001, 16.5506

Square

The Square scheme is like the rectangle color scheme, but the four colors are evenly spaced on the color wheel.



60.6474, 35.8429, 5.0342



60.6474, -5.0775, 28.0354



60.6474, -34.3977, 1.5155



60.6474, -1.3789, -40.2770

Rectangle

The Rectangle color scheme consists of four colors that form a rectangle on the color wheel.



60.6459, 35.8460, 5.0329



60.6474, 19.2926, 24.3406



60.6474, -34.3977, 1.5155



60.6474, -22.8969, -29.7994

Sweetspot

The Sweet Spot groups the original color and five complimentary colors.



60.6474, 35.8429, 5.0342



88.9896, 8.2322, 4.6180



59.7903, 38.8406, -38.1828



40.3395, 4.8958, 2.1021

0.0000, NaN, NaN



46.2646, -2.4686, 2.5136

Same Dimension

The Same Dimension uses a secret algorithm to generate beautiful new colors.



60.6474, 35.8429, 5.0342



62.0321, 49.6524, 6.9648



65.1148, 21.3147, 19.9578



37.9907, 1.8296, 1.9752



31.2209, 54.1816, 14.6324



8.5770, 15.0596, 2.6647

Inverse Universe

The Inverse Universe completely reimagines the original color for something new.



60.6474, 35.8429, 5.0342



62.0321, 49.6524, 6.9648



75.7420, -20.2884, -13.4446



37.9907, 1.8296, 1.9752



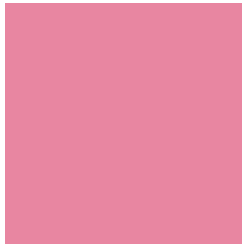
31.2209, 54.1816, 14.6324



8.5770, 15.0596, 2.6647

Previews

White Background



This preview shows how the HunterLab color 60.6459, 35.8460, 5.0329 looks on a white background.

Color Contrast Check

Large Text (above 18pt) WCAG AA × Fail

Any Text WCAG AA × Fail

Large Text (above 18pt) WCAG AAA × Fail

Any Text WCAG AAA × Fail

Black Background



This preview shows how the HunterLab color 60.6459, 35.8460, 5.0329 looks on a black background.

Color Contrast Check

Large Text (above 18pt) WCAG AA ✓ Pass

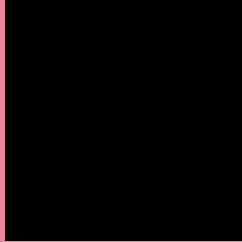
Any Text WCAG AA ✓ Pass

Large Text (above 18pt) WCAG AAA ✓ Pass

Any Text WCAG AAA ✓ Pass

If you want to check with other color combinations, try the [Color Contrast Checker](#).

HunterLab 60.6459, 35.8460, 5.0329 Background



This preview shows how black text looks on a background with the HunterLab color 60.6459, 35.8460, 5.0329.



This preview shows how white text looks on a background with the HunterLab color 60.6459, 35.8460,

Color Blindness Simulation

Color vision deficiency is a very complex topic, and I could not describe the different causes any better than Wikipedia does, so if you want to learn more, you should check out their [article about color blindness](#).

Dichromacy



Original Color

60.6459, 35.8460, 5.0329

Protanopia

60.9879, -0.6691, -3.3781

Deuteranopia

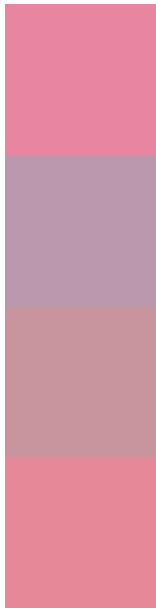
60.6903, 4.3916, 6.3117



Tritanopia

60.8168, 32.0082, 11.1246

Trichromacy



Original Color

60.6459, 35.8460, 5.0329

Protanomaly

60.1052, 11.8662, -1.2560

Deuteranomaly

60.2021, 15.4364, 5.5088

Tritanomaly

60.7159, 33.1777, 8.9856

Monochromacy



Original Color

60.6459, 35.8460, 5.0329

Achromatopsia

61.7516, -3.2949, 3.3551

Achromatomaly

60.6124, 10.2287, 3.1725

CSS Examples

Text

The CSS property to change the color of the text to HunterLab 60.6459, 35.8460, 5.0329 is called "color". The color property can be set on classes, ids or directly on the HTML element.

This example shows how text in the color `rgb(232, 134, 161)` looks like.

```
.text, #text, p{  
    color:rgb(232, 134, 161)  
}
```

If you want to add a text shadow in that color use the text-shadow property, you can generate a text shadow directly with our [CSS Text Shadow Generator](#).

Here you see how black text with a 4 pixel rgb(232, 134, 161) colored shadow looks like.

```
.shadow{ text-shadow: 4px 4px 2px rgb(232, 134, 161) }
```

Border

The CSS property to change the border of an element to HunterLab 60.6459, 35.8460, 5.0329 is called "border". The border property can be set on classes, ids or directly on the HTML element.

This example shows the color as border, it can be applied via the CSS property "border" or "border-color".

```
.border, #border, table{ border:4px solid rgb(232, 134, 161) }
```


If only the border color should be changed use the property `border-color`.

```
.border{ border-color:rgb(232, 134, 161) }
```

If you want to add a box shadow in that color use:

Here you see how a box with a 4 pixel `rgb(232, 134, 161)` colored shadow looks like.

```
.boxshadow{ -moz-box-shadow:4px 4px 4px  
4px rgb(232, 134, 161); -webkit-box-  
shadow:4px 4px 4px 4px rgb(232, 134, 161);  
box-shadow:4px 4px 4px 4px rgb(232, 134,  
161) }
```

Background

The CSS property to change the background color of an element to HunterLab 60.6459, 35.8460, 5.0329 is called "background". The background property can be set on classes, ids or directly on the HTML element.

```
.background, #background, body{  
background: rgb(232, 134, 161) }
```

If only the background color should be changed can be used:

```
.background{ background-color: rgb(232,  
134, 161) }
```

This example shows the color as background, it is applied via the CSS property "background".

To optimize and compress your CSS code, you can use our [online CSS compressor and optimizer](#) based on csstidy. If you want to create a linear or radial gradient as background or border, check our [CSS Gradient Generator](#).

Hey! You found this booklet interesting? Support Converting Colors with the new Membership Option!

The pro membership hides all ads, plus gives you double the colors in the color bucket, and more awesome pro features!

[Learn more, Memberships starting at \\$2.50/m!](#)

**Follow me
on Twitter!**

@ConvertingColor