

Converting Colors

HunterLab(60.6460, 0.3081,
-0.5642)

Have a look what the booklet for
HunterLab(60.6460, 0.3081, -0.5642)
contains.

HunterLab(60.5671, 0.4807, -0.8771)	3
<i>Conversions</i>	4
<i>Details</i>	6
<i>Harmonies</i>	12
<i>Previews</i>	24
<i>Color Blindness Simulation</i>	28
<i>CSS Examples</i>	31

Color

**HunterLab(60.5671, 0.4807,
-0.8771)**

Conversions

Conversions Part 1

Format	Color
Hex	A7A1AC
RGB	167, 161, 172
RGB Percent	65%, 63%, 67%
CMY	0.3451, 0.3686, 0.3255
CMYK	0.03, 0.06, 0.00, 0.33
HSL	273°, 6%, 65%
HSV	273°, 6%, 67%
XYZ	36.1276, 36.6837, 44.2062
YIQ	164.0480, 0.0450, 4.6930

Conversions

Conversions Part 2

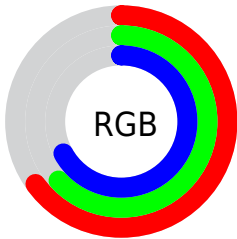
Format	Color
RYB	167, 161, 172
Decimal	10985900
CIELab	67.04, 4.26, -4.92
CIELCh	67, 6.511, 310.886
Yxy	36.6853, 0.3087, 0.3135
Android (android.graphics.Color)	4289175980 (0xFFA7A1AC)
YUV	164.0480, 3.9203, 2.5889
Hunter-Lab	60.5671, 0.4807, -0.8771

Details

The HunterLab color $60.5671, 0.4807, -0.8771$ is a light color, and the websafe version is hex 999999 . A complement of this color would be $63.3925, -6.9985, 7.4019$, and the grayscale version is $60.9345, -3.2513, 3.3107$.

A 20% lighter version of the original color is $83.7779, -0.5667, 0.1826$, and $40.1905, 0.8895, -1.4329$ is the 20% darker color. If you saturate the color by 10%, you get $55.0047, 6.6919, -8.0602$, and if you desaturate by 10%, it is $66.3279, -5.6103, 5.8839$.

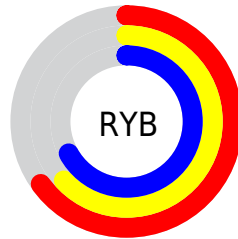
Distribution



Red (65%)

Green (63%)

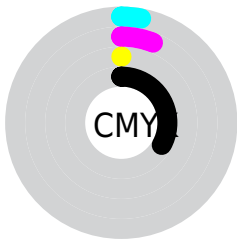
Blue (67%)



Red (65%)

Yellow (63%)

Blue (67%)

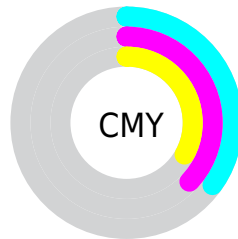


Cyan (3%)

Magenta (6%)

Yellow (0%)

Black (33%)



Cyan (35%)

Magenta (37%)

Yellow (33%)

Brightness & Saturation Gradients

These gradients show how the HunterLab color 60.5671, 0.4807, -0.8771 changes by changing the brightness by 10 percent. The first figure shows a shift by +10% for each color and the second figure -10%.

Similar to the brightness gradients but the following saturation gradients show a change of the HunterLab color 60.5671, 0.4807, -0.8771 by changing the saturation by 10% instead.

■ 60.5671, 0.4807,
-0.8771

■ 60.5671, 0.4807,
-0.8771

182.1939, -4.4024,
3.9993

■ 49.9639, 0.8205,
-1.2122

■ 83.7189, -0.3435,
-0.0607

■ 40.0627, 1.1087,
-1.4945

■ 96.1973, -0.8180,
0.4113

■ 30.9187, 1.3371,
-1.7166

109.2406, -1.3308,
0.9227

■ 22.6009, 1.4965,
-1.8699

122.8252, -1.8798,
1.4710

■ 15.2012, 1.5733,
-1.9424

136.9306, -2.4629,
2.0544

■ 8.8284, 1.6319,
-1.9548

151.5380, -3.0787,

0.0000, NaN, NaN

2.6712

0.0000, NaN, NaN

166.6308, -3.7256,
3.3200

0.0000, NaN, NaN

■ 60.5671, 0.4807,
-0.8771

■ 60.5671, 0.4807,
-0.8771

■ 55.0047, 6.6919,
-8.0602

■ 66.3279, -5.6103,
5.8839

■ 49.6680, 13.0422,
-15.7579

■ 72.2589, -11.5961,
12.2975

■ 44.5985, 19.5301,
-24.0642

■ 78.3421, -17.4975,
18.4293

■ 39.8486, 26.1224,
-33.0605

■ 84.5620, -23.3325,
24.3325

■ 35.4862, 32.7167,
-42.7721

■ 90.9061, -29.1165,
30.0502

■ 31.5971, 39.0848,
-53.0836

■ 94.2247, -30.5510,
32.9666

■ 28.2825, 44.8033,
-63.6089

■ 94.8617, -28.1714,
33.5657

■ 25.6457, 49.2304,
-73.5690

■ 95.5244, -25.7139,
34.1863

■ 23.7357, 51.7387,
-81.9629

■ 96.2127, -23.1809,
34.8281

Harmonies

Analogous

The Analogous color harmony consists of three colors that are next to each other on the color wheel.



60.5684, -2.1723, -2.1787



60.5671, 0.4807, -0.8771



60.5684, 2.1549, 1.5241

Triad

The Triadic color harmony groups three colors that are evenly spaced from another and form a triangle on the color wheel.



60.5684, 0.4793, -0.8761



60.5684, -1.3879, 8.1236



60.5684, -8.6438, 2.2808

Complementary

The Complementary color scheme is a pair of colors which are on the opposite of each other on the color wheel.



60.5671, 0.4807, -0.8771



63.3925, -6.9985, 7.4019

Split Complementary

Split-complementary colors differ from the complementary color scheme. The scheme consists of three colors, the original color and two neighbors of the complement color.



60.5684, -8.4428, 5.0177



60.5671, 0.4807, -0.8771



60.5684, -4.2904, 8.3047

Square

The Square scheme is like the rectangle color scheme, but the four colors are evenly spaced on the color wheel.



60.5684, 0.4793, -0.8761



60.5684, 1.0628, 6.6856



60.5684, -6.8619, 7.1926



60.5684, -7.4163, -0.2996

Rectangle

The Rectangle color scheme consists of four colors that form a rectangle on the color wheel.



60.5671, 0.4807, -0.8771



60.5684, 2.4744, 3.3794



60.5684, -6.8619, 7.1926



60.5684, -8.7405, 3.2143

Sweetspot

The Sweet Spot groups the original color and five complimentary colors.



60.5684, 0.4793, -0.8761



84.9295, -2.9476, 2.8514



61.5450, -3.8547, 0.2562



39.6331, -1.4174, 1.3774



93.2148, -4.9737, 5.0645



40.3295, -2.1519, 2.1912

Same Dimension

The Same Dimension uses a secret algorithm to generate beautiful new colors.



60.5684, 0.4793, -0.8761



80.2480, 2.0971, -2.8286



61.0134, 1.9715, -0.1179



28.2211, 1.0907, -1.4000



20.0312, 45.3691, -72.8308



3.7894, 8.1166, -10.1650

Inverse Universe

The Inverse Universe completely reimagines the original color for something new.



60.8401, 1.0354, 2.3485



80.7194, 3.0538, 2.7629



62.9835, -8.4290, 6.7602



28.4141, 1.4803, 0.8894



26.3611, 46.7461, 4.6164



4.5215, 8.2490, -0.9994

Previews

White Background



This preview shows how the HunterLab color 60.5671, 0.4807, -0.8771 looks on a white background.

Color Contrast Check

Large Text (above 18pt) WCAG AA × Fail

Any Text WCAG AA × Fail

Large Text (above 18pt) WCAG AAA × Fail

Any Text WCAG AAA × Fail

Black Background



This preview shows how the HunterLab color 60.5671, 0.4807, -0.8771 looks on a black background.

Color Contrast Check

Large Text (above 18pt) WCAG AA ✓ Pass

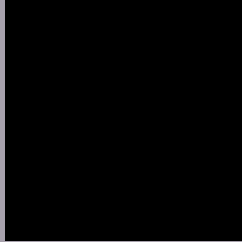
Any Text WCAG AA ✓ Pass

Large Text (above 18pt) WCAG AAA ✓ Pass

Any Text WCAG AAA ✓ Pass

If you want to check with other color combinations, try the [Color Contrast Checker](#).

HunterLab 60.5671, 0.4807, -0.8771 Background



This preview shows how black text looks on a background with the HunterLab color 60.5671, 0.4807, -0.8771.



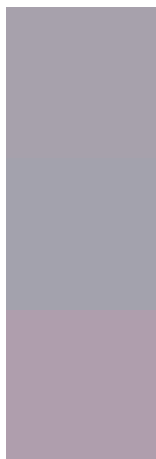
This preview shows how white text looks on a background with the HunterLab color 60.5671, 0.4807, -0.8771.

-0.8771.

Color Blindness Simulation

Color vision deficiency is a very complex topic, and I could not describe the different causes any better than Wikipedia does, so if you want to learn more, you should check out their [article about color blindness](#).

Dichromacy



Original Color

60.5671, 0.4807, -0.8771

Protanopia

60.5346, -1.0568, -1.4397

Deuteranopia

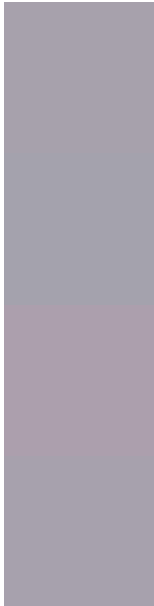
60.4854, 4.6670, -1.4013



Tritanopia

60.5990, 0.6531, -1.3289

Trichromacy



Original Color

60.5671, 0.4807, -0.8771

Protanomaly

60.6220, -0.7559, -1.3247

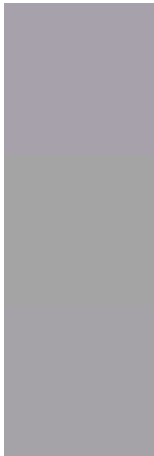
Deuteranomaly

60.4848, 3.2094, -1.4276

Tritanomaly

60.5990, 0.6531, -1.3289

Monochromacy



Original Color

60.5671, 0.4807, -0.8771

Achromatopsia

60.9293, -3.2510, 3.3104

Achromatomaly

60.8143, -1.9644, 1.7962

CSS Examples

Text

The CSS property to change the color of the text to HunterLab 60.5671, 0.4807, -0.8771 is called "color". The color property can be set on classes, ids or directly on the HTML element.

This example shows how text in the color `rgb(167, 161, 172)` looks like.

```
.text, #text, p{  
    color:rgb(167, 161, 172)  
}
```

If you want to add a text shadow in that color use the text-shadow property, you can generate a text shadow directly with our [CSS Text Shadow Generator](#).

Here you see how black text with a 4 pixel rgb(167, 161, 172) colored shadow looks like.

```
.shadow{ text-shadow: 4px 4px 2px rgb(167, 161, 172) }
```

Border

The CSS property to change the border of an element to HunterLab 60.5671, 0.4807, -0.8771 is called "border". The border property can be set on classes, ids or directly on the HTML element.

This example shows the color as border, it can be applied via the CSS property "border" or "border-color".

```
.border, #border, table{ border:4px solid rgb(167, 161, 172) }
```


If only the border color should be changed use the property `border-color`.

```
.border{ border-color:rgb(167, 161, 172) }
```

If you want to add a box shadow in that color use:

Here you see how a box with a 4 pixel `rgb(167, 161, 172)` colored shadow looks like.

```
.boxshadow{ -moz-box-shadow:4px 4px 4px  
4px rgb(167, 161, 172); -webkit-box-  
shadow:4px 4px 4px 4px rgb(167, 161, 172);  
box-shadow:4px 4px 4px 4px rgb(167, 161,  
172) }
```

Background

The CSS property to change the background color of an element to HunterLab 60.5671, 0.4807, -0.8771 is called "background". The background property can be set on classes, ids or directly on the HTML element.

```
.background, #background, body{  
background: rgb(167, 161, 172) }
```

If only the background color should be changed can be used:

```
.background{ background-color: rgb(167,  
161, 172) }
```

This example shows the color as background, it is applied via the CSS property "background".

To optimize and compress your CSS code, you can use our [online CSS compressor and optimizer](#) based on csstidy. If you want to create a linear or radial gradient as background or border, check our [CSS Gradient Generator](#).

Hey! You found this booklet interesting? Support Converting Colors with the new Membership Option!

The pro membership hides all ads, plus gives you double the colors in the color bucket, and more awesome pro features!

[Learn more, Memberships starting at \\$2.50/m!](#)

**Follow me
on Twitter!**

@ConvertingColor