

Converting Colors

HunterLab(60.6615, 15.9165,
13.4114)

Have a look what the booklet for
HunterLab(60.6615, 15.9165,
13.4114) contains.

HunterLab(60.6616, 15.9392, 13.4084)	3
<i>Conversions</i>	4
<i>Details</i>	6
<i>Harmonies</i>	12
<i>Previews</i>	24
<i>Color Blindness Simulation</i>	28
<i>CSS Examples</i>	31

Color

**HunterLab(60.6616, 15.9392,
13.4084)**

Conversions

Conversions Part 1

Format	Color
Hex	D0958C
RGB	208, 149, 140
RGB Percent	82%, 58%, 55%
CMY	0.1843, 0.4157, 0.4510
CMYK	0.00, 0.28, 0.33, 0.18
HSL	8°, 42%, 68%
HSV	8°, 33%, 82%
XYZ	41.4936, 36.7983, 29.7269
YIQ	165.6150, 38.0530, 9.7090

Conversions

Conversions Part 2

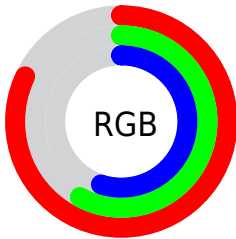
Format	Color
R _Y B	208, 150, 140
Decimal	13669772
CIE Lab	67.13, 21.00, 13.58
CIE LCh	67, 25.005, 32.881
Yxy	36.8000, 0.3841, 0.3407
Android (android.graphics.Color)	4291859852 (0xFFD0958C)
YUV	165.6150, -12.6282, 37.1716
Hunter-Lab	60.6616, 15.9392, 13.4084

Details

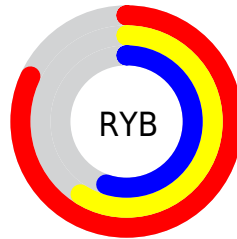
The HunterLab color **60.6616, 15.9392, 13.4084** is a light color, and the websafe version is hex **CC9999**. A complement of this color would be **71.3966, -18.3810, -5.8833**, and the grayscale version is **61.6337, -3.2886, 3.3487**.

A 20% lighter version of the original color is **82.3814, 12.5614, 14.2501**, and **40.1858, 14.7903, 10.7499** is the 20% darker color. If you saturate the color by 10%, you get **55.6493, 22.7868, 16.0276**, and if you desaturate by 10%, it is **66.0548, 9.4021, 10.6845**.

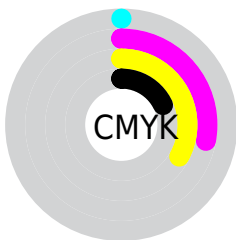
Distribution



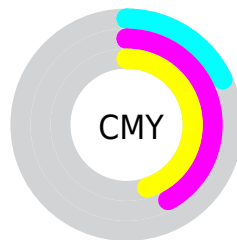
- Red (82%)
- Green (58%)
- Blue (55%)



- Red (82%)
- Yellow (59%)
- Blue (55%)



- Cyan (0%)
- Magenta (28%)
- Yellow (33%)
- Black (18%)



- Cyan (18%)
- Magenta (42%)
- Yellow (45%)

Brightness & Saturation Gradients

These gradients show how the HunterLab color 60.6616, 15.9392, 13.4084 changes by changing the brightness by 10 percent. The first figure shows a shift by +10% for each color and the second figure -10%.

Similar to the brightness gradients but the following saturation gradients show a change of the HunterLab color 60.6616, 15.9392, 13.4084 by changing the saturation by 10% instead.

60.6616, 15.9392,
13.4084

60.6616, 15.9392,
13.4084

182.3305, 17.1178,
25.2649

50.0527, 15.4546,
12.0783

83.8243, 16.6451,
16.0352

40.1452, 14.8732,
10.7234

96.3077, 16.8879,
17.3414

30.9944, 14.1779,
9.3300

109.3557, 17.0650,
18.6483

22.6690, 13.3509,
7.8750

122.9450, 17.1814,
19.9583

15.2609, 12.3704,
6.3182

137.0548, 17.2415,
21.2736

8.8824, 11.3140,
6.2177

151.6665, 17.2488,

0.0000, INF, NaN

22.5957

0.0000, NaN, NaN

166.7634, 17.2067,
23.9259

0.0000, NaN, NaN

■ 60.6616, 15.9392,
13.4084

■ 60.6616, 15.9392,
13.4084

■ 55.6493, 22.7868,
16.0276

■ 66.0548, 9.4021,
10.6845

■ 51.0788, 29.8885,
18.4693

■ 71.7701, 3.1952,
7.8981

■ 47.0266, 37.0933,
20.6338

■ 77.7641, -2.7004,
5.0778

■ 43.5733, 44.1342,
22.3905

■ 84.0006, -8.3135,
2.2394

■ 40.7950, 50.6138,
23.5979

■ 90.4500, -13.6778,
-0.6083

■ 38.7457, 56.0476,
24.1530

■ 95.9948, -19.5628,
0.3757

■ 37.7080, 59.0624,
24.2695

Harmonies

Analogous

The Analogous color harmony consists of three colors that are next to each other on the color wheel.



60.6630, 19.8149, 4.3234



60.6616, 15.9392, 13.4084



60.6630, 6.8978, 18.8597

Triad

The Triadic color harmony groups three colors that are evenly spaced from another and form a triangle on the color wheel.



60.6630, 15.9366, 13.4094



60.6630, -21.2521, 11.9222



60.6630, -2.1532, -20.9438

Complementary

The Complementary color scheme is a pair of colors which are on the opposite of each other on the color wheel.



60.6616, 15.9392, 13.4084



71.3966, -18.3810, -5.8833

Split Complementary

Split-complementary colors differ from the complementary color scheme. The scheme consists of three colors, the original color and two neighbors of the complement color.



60.6630, -12.7530, -17.9217



60.6616, 15.9392, 13.4084



60.6630, -23.2952, 2.2627

Square

The Square scheme is like the rectangle color scheme, but the four colors are evenly spaced on the color wheel.



60.6630, 15.9366, 13.4094



60.6630, -14.5006, 18.1169



60.6630, -20.2957, -8.9133



60.6630, 8.9068, -16.5569

Rectangle

The Rectangle color scheme consists of four colors that form a rectangle on the color wheel.



60.6616, 15.9392, 13.4084



60.6630, -0.5466, 20.3235



60.6630, -20.2957, -8.9133



60.6630, -5.8873, -20.7618

Sweetspot

The Sweet Spot groups the original color and five complimentary colors.



60.6630, 15.9366, 13.4094



92.2784, 2.0763, 9.0338



60.2825, 30.1931, -16.1100



42.2025, 1.4567, 4.4124

0.0000, NaN, NaN



46.2646, -2.4686, 2.5136

Same Dimension

The Same Dimension uses a secret algorithm to generate beautiful new colors.



60.6630, 15.9366, 13.4094



72.0531, 25.8632, 19.1345



69.8085, -0.8083, 21.9286



34.7232, 0.5787, 3.2863



29.9042, 46.1859, 19.2354



7.6459, 9.1516, 4.8716

Inverse Universe

The Inverse Universe completely reimagines the original color for something new.



71.3966, -18.3810, -5.8833



88.1175, -25.8261, -9.8115



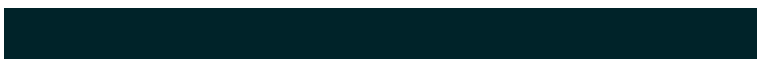
61.1773, -2.4616, -20.1796



36.2338, -4.1979, 0.5828



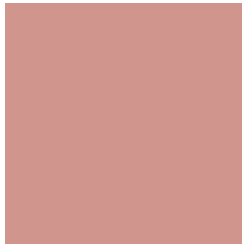
48.3741, -20.5339, -16.1367



11.7656, -5.2735, -3.3220

Previews

White Background



This preview shows how the HunterLab color 60.6616, 15.9392, 13.4084 looks on a white background.

Color Contrast Check

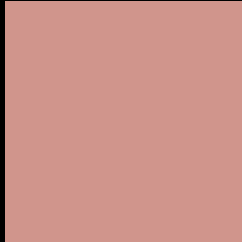
Large Text (above 18pt) WCAG AA × Fail

Any Text WCAG AA × Fail

Large Text (above 18pt) WCAG AAA × Fail

Any Text WCAG AAA × Fail

Black Background



This preview shows how the HunterLab color 60.6616, 15.9392, 13.4084 looks on a black background.

Color Contrast Check

Large Text (above 18pt) WCAG AA ✓ Pass

Any Text WCAG AA ✓ Pass

Large Text (above 18pt) WCAG AAA ✓ Pass

Any Text WCAG AAA ✓ Pass

If you want to check with other color combinations, try the [Color Contrast Checker](#).

HunterLab 60.6616, 15.9392, 13.4084 Background



This preview shows how black text looks on a background with the HunterLab color 60.6616, 15.9392, 13.4084.



This preview shows how white text looks on a background with the HunterLab color 60.6616, 15.9392,

13.4084.

Color Blindness Simulation

Color vision deficiency is a very complex topic, and I could not describe the different causes any better than Wikipedia does, so if you want to learn more, you should check out their [article about color blindness](#).

Dichromacy



Original Color

60.6616, 15.9392, 13.4084

Protanopia

60.7938, -3.1592, 10.4846

Deuteranopia

60.8112, 3.8111, 14.0951



Tritanopia

60.6037, 20.6792, 6.0591

Trichromacy



Original Color

60.6616, 15.9392, 13.4084

Protanomaly

60.5456, 3.2111, 11.5257

Deuteranomaly

60.7527, 7.9390, 13.7365

Tritanomaly

60.5451, 18.7972, 8.9655

Monochromacy



Original Color

60.6616, 15.9392, 13.4084

Achromatopsia

61.7516, -3.2949, 3.3551

Achromatomaly

61.1553, 3.0539, 6.8117

CSS Examples

Text

The CSS property to change the color of the text to HunterLab 60.6616, 15.9392, 13.4084 is called "color". The color property can be set on classes, ids or directly on the HTML element.

This example shows how text in the color `rgb(208, 149, 140)` looks like.

```
.text, #text, p{  
    color:rgb(208, 149, 140)  
}
```

If you want to add a text shadow in that color use the text-shadow property, you can generate a text shadow directly with our [CSS Text Shadow Generator](#).

Here you see how black text with a 4 pixel rgb(208, 149, 140) colored shadow looks like.

```
.shadow{ text-shadow: 4px 4px 2px rgb(208, 149, 140) }
```

Border

The CSS property to change the border of an element to HunterLab 60.6616, 15.9392, 13.4084 is called "border". The border property can be set on classes, ids or directly on the HTML element.

This example shows the color as border, it can be applied via the CSS property "border" or "border-color".

```
.border, #border, table{ border:4px solid rgb(208, 149, 140) }
```


If only the border color should be changed use the property border-color.

```
.border{ border-color:rgb(208, 149, 140) }
```

If you want to add a box shadow in that color use:

Here you see how a box with a 4 pixel rgb(208, 149, 140) colored shadow looks like.

```
.boxshadow{ -moz-box-shadow:4px 4px 4px  
4px rgb(208, 149, 140); -webkit-box-  
shadow:4px 4px 4px 4px rgb(208, 149, 140);  
box-shadow:4px 4px 4px 4px rgb(208, 149,  
140) }
```

Background

The CSS property to change the background color of an element to HunterLab 60.6616, 15.9392, 13.4084 is called "background". The background property can be set on classes, ids or directly on the HTML element.

```
.background, #background, body{  
background: rgb(208, 149, 140) }
```

If only the background color should be changed can be used:

```
.background{ background-color: rgb(208,  
149, 140) }
```

This example shows the color as background, it is applied via the CSS property "background".

To optimize and compress your CSS code, you can use our [online CSS compressor and optimizer](#) based on csstidy. If you want to create a linear or radial gradient as background or border, check our [CSS Gradient Generator](#).

Hey! You found this booklet interesting? Support Converting Colors with the new Membership Option!

The pro membership hides all ads, plus gives you double the colors in the color bucket, and more awesome pro features!

[Learn more, Memberships starting at \\$2.50/m!](#)

**Follow me
on Twitter!**

@ConvertingColor