

Converting Colors

HunterLab(60.7164, 8.0468,
23.6988)

Have a look what the booklet for
HunterLab(60.7164, 8.0468,
23.6988) contains.

HunterLab(60.7375, 8.0052, 23.7171)	3
<i>Conversions</i>	4
<i>Details</i>	6
<i>Harmonies</i>	12
<i>Previews</i>	24
<i>Color Blindness Simulation</i>	28
<i>CSS Examples</i>	31

Color

**HunterLab(60.7375, 8.0052,
23.7171)**

Conversions

Conversions Part 1

Format	Color
Hex	CB9A6C
RGB	203, 154, 108
RGB Percent	80%, 60%, 42%
CMY	0.2039, 0.3961, 0.5765
CMYK	0.00, 0.24, 0.47, 0.20
HSL	29°, 48%, 61%
HSV	29°, 47%, 80%
XYZ	38.8910, 36.8904, 19.2581
YIQ	163.4070, 43.9700, -3.9180

Conversions

Conversions Part 2

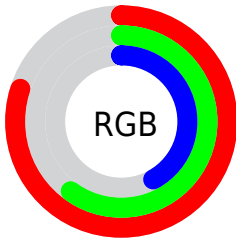
Format	Color
R_{YB}	203, 197, 108
Decimal	13343340
CIE _{Lab}	67.20, 12.60, 31.17
CIE _{LCh}	67, 33.624, 67.995
Yxy	36.8922, 0.4092, 0.3882
Android (android.graphics.Color)	4291533420 (0xFFCB9A6C)
YUV	163.4070, -27.3157, 34.7231
Hunter-Lab	60.7375, 8.0052, 23.7171

Details

The HunterLab color **60.7375, 8.0052, 23.7171** is a light color, and the websafe version is hex **CC9966**. A complement of this color would be **56.2251, -6.2620, -25.0437**, and the grayscale version is **60.7828, -3.2432, 3.3024**.

A 20% lighter version of the original color is **83.0119, 5.5529, 27.4950**, and **40.2862, 7.9175, 18.6712** is the 20% darker color. If you saturate the color by 10%, you get **57.6215, 11.5531, 26.2751**, and if you desaturate by 10%, it is **64.0189, 4.8091, 20.5223**.

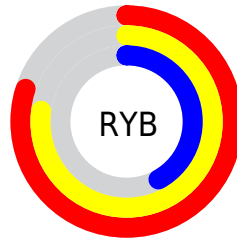
Distribution



Red (80%)

Green (60%)

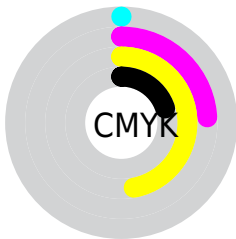
Blue (42%)



Red (80%)

Yellow (77%)

Blue (42%)

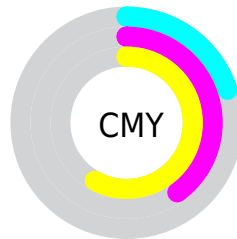


Cyan (0%)

Magenta (24%)

Yellow (47%)

Black (20%)



Cyan (20%)

Magenta (40%)

Yellow (58%)

Brightness & Saturation Gradients

These gradients show how the HunterLab color 60.7375, 8.0052, 23.7171 changes by changing the brightness by 10 percent. The first figure shows a shift by +10% for each color and the second figure -10%.

Similar to the brightness gradients but the following saturation gradients show a change of the HunterLab color 60.7375, 8.0052, 23.7171 by changing the saturation by 10% instead.

60.7375, 8.0052,
23.7171

60.7375, 8.0052,
23.7171

182.4400, 6.1918,
43.1005

50.1239, 7.9221,
21.2723

83.9089, 7.9600,
28.3428

40.2113, 7.7625,
18.7033

96.3962, 7.8497,
30.5579

31.0551, 7.5117,
15.9720

109.4481, 7.6864,
32.7249

22.7237, 7.1535,
13.0233

123.0411, 7.4740,
34.8528

15.3089, 6.6645,
10.7162

137.1544, 7.2158,
36.9490

8.9255, 6.0789,
6.2479

151.7695, 6.9145,

0.0000, INF, NaN

39.0193

0.0000, NaN, NaN

166.8698, 6.5725,
41.0685

0.0000, NaN, NaN

■ 60.7375, 8.0052,
23.7171

■ 60.7375, 8.0052,
23.7171

■ 57.6215, 11.5531,
26.2751

■ 64.0189, 4.8091,
20.5223

■ 54.6807, 15.4630,
28.1382

■ 67.4478, 1.9604,
16.7470

■ 51.9313, 19.7191,
29.2624

■ 71.0132, -0.5618,
12.4492

■ 49.3874, 24.2859,
29.6271

■ 74.7038, -2.7789,
7.6821

■ 47.0599, 29.0921,
29.2722

■ 78.5096, -4.7137,
2.4940

■ 46.3562, 30.6400,
29.1009

■ 82.4213, -6.3888,
-3.0719

■ 86.4309, -7.8261,
-8.9777

■ 89.9593, -12.2154,
-7.1350

■ 93.3774, -17.5231,
-2.8392

Harmonies

Analogous

The Analogous color harmony consists of three colors that are next to each other on the color wheel.



60.7390, 21.3284, 17.9490



60.7375, 8.0052, 23.7171



60.7390, -7.2236, 24.7641

Triad

The Triadic color harmony groups three colors that are evenly spaced from another and form a triangle on the color wheel.



60.7390, 8.0026, 23.7179



60.7390, -29.3660, -0.6556



60.7390, 15.6496, -22.6850

Complementary

The Complementary color scheme is a pair of colors which are on the opposite of each other on the color wheel.



60.7375, 8.0052, 23.7171



56.2251, -6.2620, -25.0437

Split Complementary

Split-complementary colors differ from the complementary color scheme. The scheme consists of three colors, the original color and two neighbors of the complement color.



60.7390, 0.8405, -30.8286



60.7375, 8.0052, 23.7171



60.7390, -24.4409, -16.2355

Square

The Square scheme is like the rectangle color scheme, but the four colors are evenly spaced on the color wheel.



60.7390, 8.0026, 23.7179



60.7390, -27.8504, 12.7568



60.7390, -13.7277, -28.2177



60.7390, 26.0347, -7.9592

Rectangle

The Rectangle color scheme consists of four colors that form a rectangle on the color wheel.



60.7375, 8.0052, 23.7171



60.7390, -16.2603, 22.9619



60.7390, -13.7277, -28.2177



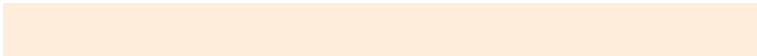
60.7390, 10.9697, -26.4283

Sweetspot

The Sweet Spot groups the original color and five complimentary colors.



60.7390, 8.0026, 23.7179



93.1238, -1.5128, 14.5551



50.8518, 37.6721, -5.2410



42.6057, -0.3962, 7.3375

0.0000, NaN, NaN



46.2646, -2.4686, 2.5136

Same Dimension

The Same Dimension uses a secret algorithm to generate beautiful new colors.



60.7390, 8.0026, 23.7179



74.5825, 14.9261, 33.9861



74.6639, -15.1443, 34.4760



34.7783, -1.0520, 4.2284



37.2241, 23.8662, 23.3552



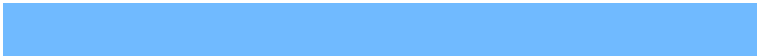
9.3091, 3.5253, 5.7980

Inverse Universe

The Inverse Universe completely reimagines the original color for something new.



56.2251, -6.2620, -25.0437



67.6251, -6.7320, -41.3945



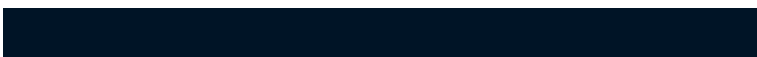
43.0842, 17.8015, -50.8919



34.3292, -2.5041, -0.6007



30.5245, 5.9178, -50.9279



7.9517, -0.4631, -8.9393

Previews

White Background



This preview shows how the HunterLab color 60.7375, 8.0052, 23.7171 looks on a white background.

Color Contrast Check

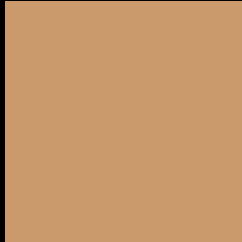
Large Text (above 18pt) WCAG AA × Fail

Any Text WCAG AA × Fail

Large Text (above 18pt) WCAG AAA × Fail

Any Text WCAG AAA × Fail

Black Background



This preview shows how the HunterLab color 60.7375, 8.0052, 23.7171 looks on a black background.

Color Contrast Check

Large Text (above 18pt) WCAG AA ✓ Pass

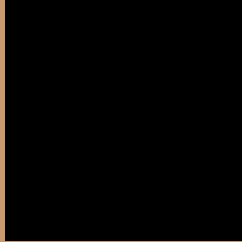
Any Text WCAG AA ✓ Pass

Large Text (above 18pt) WCAG AAA ✓ Pass

Any Text WCAG AAA ✓ Pass

If you want to check with other color combinations, try the [Color Contrast Checker](#).

HunterLab 60.7375, 8.0052, 23.7171 Background



This preview shows how black text looks on a background with the HunterLab color 60.7375, 8.0052, 23.7171.



This preview shows how white text looks on a background with the HunterLab color 60.7375, 8.0052,

23.7171.

Color Blindness Simulation

Color vision deficiency is a very complex topic, and I could not describe the different causes any better than Wikipedia does, so if you want to learn more, you should check out their [article about color blindness](#).

Dichromacy



Original Color

60.7375, 8.0052, 23.7171

Protanopia

60.8834, -5.8915, 22.4849

Deuteranopia

60.8653, 4.1567, 24.0277



Tritanopia

60.6470, 19.5574, 5.6458

Trichromacy



Original Color

60.7375, 8.0052, 23.7171

Protanomaly

60.6040, -0.9381, 22.6146

Deuteranomaly

60.8117, 5.4010, 24.0046

Tritanomaly

60.6860, 14.6708, 13.4111

Monochromacy



Original Color

60.7375, 8.0052, 23.7171

Achromatopsia

60.5188, -3.2291, 3.2881

Achromatomaly

60.4895, 0.0487, 11.8029

CSS Examples

Text

The CSS property to change the color of the text to HunterLab 60.7375, 8.0052, 23.7171 is called "color". The color property can be set on classes, ids or directly on the HTML element.

This example shows how text in the color `rgb(203, 154, 108)` looks like.

```
.text, #text, p{  
    color:rgb(203, 154, 108)  
}
```

If you want to add a text shadow in that color use the text-shadow property, you can generate a text shadow directly with our [CSS Text Shadow Generator](#).

Here you see how black text with a 4 pixel rgb(203, 154, 108) colored shadow looks like.

```
.shadow{ text-shadow: 4px 4px 2px rgb(203, 154, 108) }
```

Border

The CSS property to change the border of an element to HunterLab 60.7375, 8.0052, 23.7171 is called "border". The border property can be set on classes, ids or directly on the HTML element.

This example shows the color as border, it can be applied via the CSS property "border" or "border-color".

```
.border, #border, table{ border:4px solid rgb(203, 154, 108) }
```


If only the border color should be changed use the property `border-color`.

```
.border{ border-color:rgb(203, 154, 108) }
```

If you want to add a box shadow in that color use:

Here you see how a box with a 4 pixel `rgb(203, 154, 108)` colored shadow looks like.

```
.boxshadow{ -moz-box-shadow:4px 4px 4px  
4px rgb(203, 154, 108); -webkit-box-  
shadow:4px 4px 4px 4px rgb(203, 154, 108);  
box-shadow:4px 4px 4px 4px rgb(203, 154,  
108) }
```

Background

The CSS property to change the background color of an element to HunterLab 60.7375, 8.0052, 23.7171 is called "background". The background property can be set on classes, ids or directly on the HTML element.

```
.background, #background, body{  
background: rgb(203, 154, 108) }
```

If only the background color should be changed can be used:

```
.background{ background-color: rgb(203,  
154, 108) }
```

This example shows the color as background, it is applied via the CSS property "background".

To optimize and compress your CSS code, you can use our [online CSS compressor and optimizer](#) based on csstidy. If you want to create a linear or radial gradient as background or border, check our [CSS Gradient Generator](#).

Hey! You found this booklet interesting? Support Converting Colors with the new Membership Option!

The pro membership hides all ads, plus gives you double the colors in the color bucket, and more awesome pro features!

[Learn more, Memberships starting at \\$2.50/m!](#)

**Follow me
on Twitter!**

@ConvertingColor