

Converting Colors

HunterLab(60.7251, 4.7422,
8.3421)

Have a look what the booklet for
HunterLab(60.7251, 4.7422, 8.3421)
contains.

HunterLab(60.8564, 4.6728, 8.6401)	3
<i>Conversions</i>	4
<i>Details</i>	6
<i>Harmonies</i>	12
<i>Previews</i>	24
<i>Color Blindness Simulation</i>	28
<i>CSS Examples</i>	31

Color

**HunterLab(60.8564, 4.6728,
8.6401)**

Conversions

Conversions Part 1

Format	Color
Hex	B99E98
RGB	185, 158, 152
RGB Percent	73%, 62%, 60%
CMY	0.2745, 0.3804, 0.4039
CMYK	0.00, 0.15, 0.18, 0.27
HSL	11°, 19%, 66%
HSV	11°, 18%, 73%
XYZ	37.9019, 37.0350, 34.8566
YIQ	165.3890, 18.0180, 3.8580

Conversions

Conversions Part 2

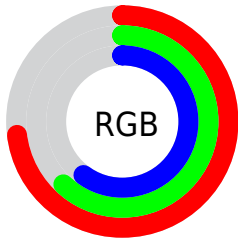
Format	Color
RYB	185, 159, 152
Decimal	12164760
CIELab	67.30, 8.96, 6.81
CIELCh	67, 11.253, 37.249
Yxy	37.0367, 0.3452, 0.3373
Android (android.graphics.Color)	4290354840 (0xFFB99E98)
YUV	165.3890, -6.6008, 17.1988
Hunter-Lab	60.8564, 4.6728, 8.6401

Details

The HunterLab color $60.8564, 4.6728, 8.6401$ is a light color, and the websafe version is hex $CC9999$. A complement of this color would be $65.1286, -10.3052, -1.8330$, and the grayscale version is $61.5224, -3.2827, 3.3426$.

A 20% lighter version of the original color is $84.1103, 3.9306, 10.7359$, and $40.4481, 4.7779, 6.9604$ is the 20% darker color. If you saturate the color by 10%, you get $56.2385, 9.7490, 11.2384$, and if you desaturate by 10%, it is $65.7085, -0.1314, 5.9469$.

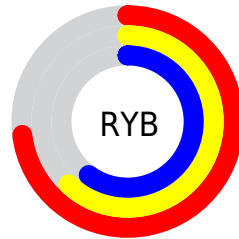
Distribution



Red (73%)

Green (62%)

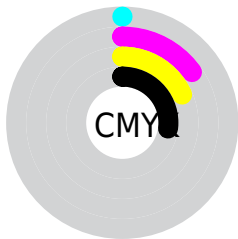
Blue (60%)



Red (73%)

Yellow (62%)

Blue (60%)

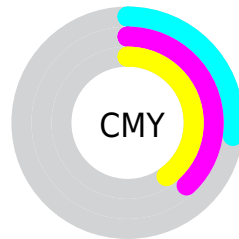


Cyan (0%)

Magenta (15%)

Yellow (18%)

Black (27%)



Cyan (27%)

Magenta (38%)

Yellow (40%)

Brightness & Saturation Gradients


These gradients show how the HunterLab color 60.8564, 4.6728, 8.6401 changes by changing the brightness by 10 percent. The first figure shows a shift by +10% for each color and the second figure -10%.

Similar to the brightness gradients but the following saturation gradients show a change of the HunterLab color 60.8564, 4.6728, 8.6401 by changing the saturation by 10% instead.


 60.8564, 4.6728,
8.6401

 60.8564, 4.6728,
8.6401


182.6114, 1.5257,
17.8194

 50.2353, 4.7727,
7.7001


 84.0412, 4.2902,
10.5638

 40.3149, 4.8061,
6.7691

 96.5348, 4.0218,
11.5485

 31.1501, 4.7613,
5.8434

109.5927, 3.7067,
12.5499

 22.8094, 4.6245,
4.9150

123.1914, 3.3480,
13.5686

 15.3840, 4.3752,
3.9688

137.3102, 2.9484,
14.6047

 8.9925, 4.0296,
3.6291

151.9307, 2.5102,

0.0000, NaN, NaN

15.6586

0.0000, NaN, NaN

167.0361, 2.0354,
16.7301

0.0000, NaN, NaN

■ 60.8564, 4.6728,
8.6401

■ 60.8564, 4.6728,
8.6401

■ 56.2385, 9.7490,
11.2384

■ 65.7085, -0.1314,
5.9469

■ 51.8861, 15.1137,
13.7021

■ 70.7615, -4.6800,
3.1812

■ 47.8431, 20.7519,
15.9796

■ 75.9926, -9.0019,
0.3607

■ 44.1592, 26.6092,
17.9989

■ 81.3818, -13.1244,
-2.5031

■ 40.8904, 32.5665,
19.6678

■ 86.9127, -17.0733,
-5.4026

■ 38.0951, 38.4181,
20.8815

■ 92.2870, -22.4829,
-4.3077

■ 35.8272, 43.8638,
21.5460

■ 94.3686, -25.5175,
-1.7375

■ 34.1202, 48.5244,
21.6746

■ 33.8214, 49.3752,
21.7050

Harmonies

Analogous

The Analogous color harmony consists of three colors that are next to each other on the color wheel.



60.8578, 6.6815, 4.4664



60.8564, 4.6728, 8.6401



60.8578, 0.5492, 11.2279

Triad

The Triadic color harmony groups three colors that are evenly spaced from another and form a triangle on the color wheel.



60.8578, 4.6709, 8.6411



60.8578, -11.9462, 6.7766



60.8578, -2.0207, -6.5781

Complementary

The Complementary color scheme is a pair of colors which are on the opposite of each other on the color wheel.



60.8564, 4.6728, 8.6401



65.1286, -10.3052, -1.8330

Split Complementary

Split-complementary colors differ from the complementary color scheme. The scheme consists of three colors, the original color and two neighbors of the complement color.



60.8578, -6.9591, -5.8331



60.8564, 4.6728, 8.6401



60.8578, -12.5838, 2.1359

Square

The Square scheme is like the rectangle color scheme, but the four colors are evenly spaced on the color wheel.



60.8578, 4.6709, 8.6411



60.8578, -9.0153, 10.2142



60.8578, -10.7863, -2.5459



60.8578, 2.7373, -4.5058

Rectangle

The Rectangle color scheme consists of four colors that form a rectangle on the color wheel.



60.8564, 4.6728, 8.6401



60.8578, -2.7839, 11.8332



60.8578, -10.7863, -2.5459



60.8578, -3.7156, -6.6515

Sweetspot

The Sweet Spot groups the original color and five complimentary colors.



60.8578, 4.6709, 8.6411



89.7741, -1.8857, 6.9471



60.0385, 12.1427, -5.1708



41.4659, -0.6759, 3.3446



96.5975, -5.1542, 5.2483



43.2801, -2.3093, 2.3515

Same Dimension

The Same Dimension uses a secret algorithm to generate beautiful new colors.



60.8578, 4.6709, 8.6411



79.2397, 8.5902, 12.7996



65.4628, -3.2776, 13.3754



30.4458, 0.2670, 2.9779



28.0497, 40.2961, 17.9895



5.9863, 5.4959, 3.7850

Inverse Universe

The Inverse Universe completely reimagines the original color for something new.



65.1286, -10.3052, -1.8330



86.0434, -15.2997, -3.8931



60.3101, -2.5346, -8.0045



31.5043, -3.4371, 0.3835



41.9867, -15.7240, -18.5361



8.3353, -3.5463, -2.7628

Previews

White Background



This preview shows how the HunterLab color 60.8564, 4.6728, 8.6401 looks on a white background.

Color Contrast Check

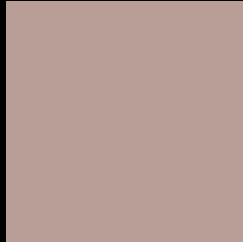
Large Text (above 18pt) WCAG AA × Fail

Any Text WCAG AA × Fail

Large Text (above 18pt) WCAG AAA × Fail

Any Text WCAG AAA × Fail

Black Background



This preview shows how the HunterLab color 60.8564, 4.6728, 8.6401 looks on a black background.

Color Contrast Check

Large Text (above 18pt) WCAG AA ✓ Pass

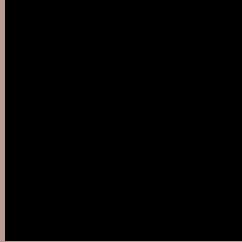
Any Text WCAG AA ✓ Pass

Large Text (above 18pt) WCAG AAA ✓ Pass

Any Text WCAG AAA ✓ Pass

If you want to check with other color combinations, try the [Color Contrast Checker](#).

HunterLab 60.8564, 4.6728, 8.6401 Background



This preview shows how black text looks on a background with the HunterLab color 60.8564, 4.6728, 8.6401.



This preview shows how white text looks on a background with the HunterLab color 60.8564, 4.6728,

Color Blindness Simulation

Color vision deficiency is a very complex topic, and I could not describe the different causes any better than Wikipedia does, so if you want to learn more, you should check out their [article about color blindness](#).

Dichromacy



Original Color

60.8564, 4.6728, 8.6401

Protanopia

60.8243, -2.6259, 7.2056

Deuteranopia

60.7545, 4.3313, 8.5227



Tritanopia

60.9663, 8.8122, 1.6942

Trichromacy



Original Color

60.8564, 4.6728, 8.6401

Protanomaly

60.7756, 0.1300, 7.6274

Deuteranomaly

60.7545, 4.3313, 8.5227

Tritanomaly

60.9604, 7.0136, 4.4405

Monochromacy



Original Color

60.8564, 4.6728, 8.6401

Achromatopsia

61.3402, -3.2730, 3.3327

Achromatomaly

60.9503, -0.4165, 5.1982

CSS Examples

Text

The CSS property to change the color of the text to HunterLab 60.8564, 4.6728, 8.6401 is called "color". The color property can be set on classes, ids or directly on the HTML element.

This example shows how text in the color `rgb(185, 158, 152)` looks like.

```
.text, #text, p{  
    color:rgb(185, 158, 152)  
}
```

If you want to add a text shadow in that color use the text-shadow property, you can generate a text shadow directly with our [CSS Text Shadow Generator](#).

Here you see how black text with a 4 pixel rgb(185, 158, 152) colored shadow looks like.

```
.shadow{ text-shadow: 4px 4px 2px rgb(185, 158, 152) }
```

Border

The CSS property to change the border of an element to HunterLab 60.8564, 4.6728, 8.6401 is called "border". The border property can be set on classes, ids or directly on the HTML element.

This example shows the color as border, it can be applied via the CSS property "border" or "border-color".

```
.border, #border, table{ border:4px solid rgb(185, 158, 152) }
```


If only the border color should be changed use the property `border-color`.

```
.border{ border-color:rgb(185, 158, 152) }
```

If you want to add a box shadow in that color use:

Here you see how a box with a 4 pixel `rgb(185, 158, 152)` colored shadow looks like.

```
.boxshadow{ -moz-box-shadow:4px 4px 4px  
4px rgb(185, 158, 152); -webkit-box-  
shadow:4px 4px 4px 4px rgb(185, 158, 152);  
box-shadow:4px 4px 4px 4px rgb(185, 158,  
152) }
```

Background

The CSS property to change the background color of an element to HunterLab 60.8564, 4.6728, 8.6401 is called "background". The background property can be set on classes, ids or directly on the HTML element.

```
.background, #background, body{  
background: rgb(185, 158, 152) }
```

If only the background color should be changed can be used:

```
.background{ background-color: rgb(185,  
158, 152) }
```

This example shows the color as background, it is applied via the CSS property "background".

To optimize and compress your CSS code, you can use our [online CSS compressor and optimizer](#) based on csstidy. If you want to create a linear or radial gradient as background or border, check our [CSS Gradient Generator](#).

Hey! You found this booklet interesting? Support Converting Colors with the new Membership Option!

The pro membership hides all ads, plus gives you double the colors in the color bucket, and more awesome pro features!

[Learn more, Memberships starting at \\$2.50/m!](#)

**Follow me
on Twitter!**

@ConvertingColor