

Converting Colors

HunterLab(60.7780, 3.2382,
13.4663)

Have a look what the booklet for
HunterLab(60.7780, 3.2382,
13.4663) contains.

HunterLab(60.6517, 3.3704, 13.1784)	3
<i>Conversions</i>	4
<i>Details</i>	6
<i>Harmonies</i>	12
<i>Previews</i>	24
<i>Color Blindness Simulation</i>	28
<i>CSS Examples</i>	31

Color

**HunterLab(60.6517, 3.3704,
13.1784)**

Conversions

Conversions Part 1

Format	Color
Hex	BA9E8C
RGB	186, 158, 140
RGB Percent	73%, 62%, 55%
CMY	0.2706, 0.3804, 0.4510
CMYK	0.00, 0.15, 0.25, 0.27
HSL	23°, 25%, 64%
HSV	23°, 25%, 73%
XYZ	37.2102, 36.7863, 29.9502
YIQ	164.3200, 22.4660, 0.3380

Conversions

Conversions Part 2

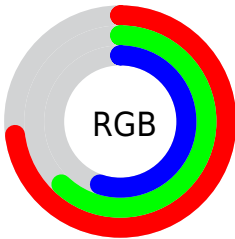
Format	Color
R _Y B	186, 170, 140
Decimal	12230284
CIE Lab	67.12, 7.51, 13.24
CIE LCh	67, 15.218, 60.428
Yxy	36.7880, 0.3580, 0.3539
Android (android.graphics.Color)	4290420364 (0xFFBA9E8C)
YUV	164.3200, -11.9898, 19.0134
Hunter-Lab	60.6517, 3.3704, 13.1784

Details

The HunterLab color $60.6517, 3.3704, 13.1784$ is a light color, and the websafe version is hex $CC9999$. A complement of this color would be $60.9302, -7.9581, -7.7985$, and the grayscale version is $61.1031, -3.2603, 3.3198$.

A 20% lighter version of the original color is $83.9870, 2.8456, 15.7717$, and $40.1984, 3.4485, 10.5636$ is the 20% darker color. If you saturate the color by 10%, you get $57.0955, 6.7236, 16.3810$, and if you desaturate by 10%, it is $64.3627, 0.3009, 9.6164$.

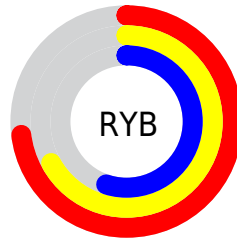
Distribution



Red (73%)

Green (62%)

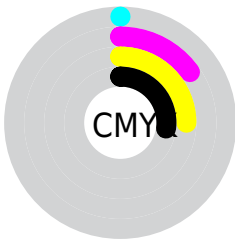
Blue (55%)



Red (73%)

Yellow (67%)

Blue (55%)

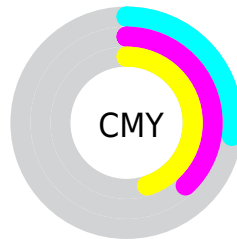


Cyan (0%)

Magenta (15%)

Yellow (25%)

Black (27%)



Cyan (27%)

Magenta (38%)

Yellow (45%)

Brightness & Saturation Gradients

These gradients show how the HunterLab color 60.6517, 3.3704, 13.1784 changes by changing the brightness by 10 percent. The first figure shows a shift by +10% for each color and the second figure -10%.

Similar to the brightness gradients but the following saturation gradients show a change of the HunterLab color 60.6517, 3.3704, 13.1784 by changing the saturation by 10% instead.

■ 60.6517, 3.3704,
13.1784

■ 60.6517, 3.3704,
13.1784

182.3161, -0.3041,
24.8970

■ 50.0433, 3.5425,
11.8685

■ 83.8132, 2.8539,
15.7688

■ 40.1365, 3.6526,
10.5355

■ 96.2961, 2.5230,
17.0584

■ 30.9864, 3.6898,
9.1665

■ 109.3436, 2.1478,
18.3495

■ 22.6619, 3.6414,
7.7388

122.9324, 1.7313,
19.6446

■ 15.2547, 3.4887,
6.2137

137.0417, 1.2759,
20.9456

■ 8.8768, 3.2784,
6.2137

151.6530, 0.7837,

0.0000, NaN, NaN

22.2539

0.0000, NaN, NaN

166.7495, 0.2565,
23.5707

0.0000, NaN, NaN

■ 60.6517, 3.3704,
13.1784

■ 60.6517, 3.3704,
13.1784

■ 57.0955, 6.7236,
16.3810

■ 64.3627, 0.3009,
9.6164

■ 53.7068, 10.3838,
19.1674

■ 68.2093, -2.5002,
5.7391

■ 50.5062, 14.3578,
21.4783

■ 72.1801, -5.0575,
1.5877

■ 47.5148, 18.6407,
23.2498

■ 76.2638, -7.3939,
-2.8043

■ 44.7552, 23.2055,
24.4214

■ 80.4505, -9.5308,
-7.4084

■ 42.2508, 27.9939,
24.9476

■ 84.7318, -11.4882,
-12.2010

■ 40.0231, 32.9054,
24.8212

■ 88.5270, -16.4901,
-9.1013

■ 38.9586, 35.4582,
24.6269

■ 92.2729, -22.1145,
-4.3193

■ 94.4347, -25.2733,
-1.6509

Harmonies

Analogous

The Analogous color harmony consists of three colors that are next to each other on the color wheel.



60.6531, 8.4862, 9.2853



60.6517, 3.3704, 13.1784



60.6531, -3.3375, 14.4973

Triad

The Triadic color harmony groups three colors that are evenly spaced from another and form a triangle on the color wheel.



60.6531, 3.3684, 13.1793



60.6531, -15.8028, 3.2082



60.6531, 3.5454, -8.4690

Complementary

The Complementary color scheme is a pair of colors which are on the opposite of each other on the color wheel.



60.6517, 3.3704, 13.1784



60.9302, -7.9581, -7.7985

Split Complementary

Split-complementary colors differ from the complementary color scheme. The scheme consists of three colors, the original color and two neighbors of the complement color.



60.6531, -3.1415, -10.5433



60.6517, 3.3704, 13.1784



60.6531, -14.1371, -3.3618

Square

The Square scheme is like the rectangle color scheme, but the four colors are evenly spaced on the color wheel.



60.6531, 3.3684, 13.1793



60.6531, -14.2280, 9.1405



60.6531, -9.5761, -8.5802



60.6531, 8.5916, -3.1827

Rectangle

The Rectangle color scheme consists of four colors that form a rectangle on the color wheel.



60.6517, 3.3704, 13.1784



60.6531, -7.7488, 13.8662



60.6531, -9.5761, -8.5802



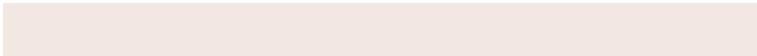
60.6531, 1.4054, -9.5896

Sweetspot

The Sweet Spot groups the original color and five complimentary colors.



60.6531, 3.3684, 13.1793



90.5799, -2.4975, 9.0071



56.6008, 16.7833, -3.8231



42.3590, -1.0676, 4.3771



97.7295, -5.2146, 5.3098



44.2712, -2.3622, 2.4053

Same Dimension

The Same Dimension uses a secret algorithm to generate beautiful new colors.



60.6531, 3.3684, 13.1793



78.8699, 7.0904, 20.2926



67.2545, -7.7281, 19.4334



30.9408, -0.5794, 3.5207



32.1680, 28.5263, 20.3212



6.9745, 3.1426, 4.3526

Inverse Universe

The Inverse Universe completely reimagines the original color for something new.



60.9302, -7.9581, -7.7985



79.3219, -11.5620, -14.2619



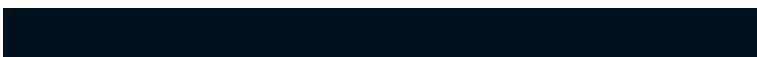
54.2993, 3.1364, -17.2104



30.9911, -2.6064, -0.2324



32.4193, -1.5352, -37.2073



6.9800, -1.6850, -5.0870

Previews

White Background



This preview shows how the HunterLab color 60.6517, 3.3704, 13.1784 looks on a white background.

Color Contrast Check

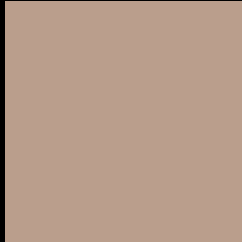
Large Text (above 18pt) WCAG AA × Fail

Any Text WCAG AA × Fail

Large Text (above 18pt) WCAG AAA × Fail

Any Text WCAG AAA × Fail

Black Background



This preview shows how the HunterLab color 60.6517, 3.3704, 13.1784 looks on a black background.

Color Contrast Check

Large Text (above 18pt) WCAG AA ✓ Pass

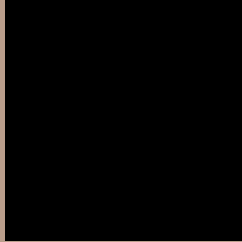
Any Text WCAG AA ✓ Pass

Large Text (above 18pt) WCAG AAA ✓ Pass

Any Text WCAG AAA ✓ Pass

If you want to check with other color combinations, try the [Color Contrast Checker](#).

HunterLab 60.6517, 3.3704, 13.1784 Background



This preview shows how black text looks on a background with the HunterLab color 60.6517, 3.3704, 13.1784.



This preview shows how white text looks on a background with the HunterLab color 60.6517, 3.3704,

Color Blindness Simulation

Color vision deficiency is a very complex topic, and I could not describe the different causes any better than Wikipedia does, so if you want to learn more, you should check out their [article about color blindness](#).

Dichromacy



Original Color

60.6517, 3.3704, 13.1784

Protanopia

60.6922, -3.7161, 11.9470

Deuteranopia

60.5795, 4.5685, 13.1260



Tritanopia

60.5667, 10.1998, 2.1835

Trichromacy



Original Color

60.6517, 3.3704, 13.1784

Protanomaly

60.5581, -1.2436, 12.2385

Deuteranomaly

60.4749, 4.2180, 13.0134

Tritanomaly

60.4718, 7.9546, 6.1268

Monochromacy



Original Color

60.6517, 3.3704, 13.1784

Achromatopsia

60.9293, -3.2510, 3.3104

Achromatomaly

60.8094, -1.1825, 7.2143

CSS Examples

Text

The CSS property to change the color of the text to HunterLab 60.6517, 3.3704, 13.1784 is called "color". The color property can be set on classes, ids or directly on the HTML element.

This example shows how text in the color `rgb(186, 158, 140)` looks like.

```
.text, #text, p{  
    color:rgb(186, 158, 140)  
}
```

If you want to add a text shadow in that color use the text-shadow property, you can generate a text shadow directly with our [CSS Text Shadow Generator](#).

Here you see how black text with a 4 pixel rgb(186, 158, 140) colored shadow looks like.

```
.shadow{ text-shadow: 4px 4px 2px rgb(186, 158, 140) }
```

Border

The CSS property to change the border of an element to HunterLab 60.6517, 3.3704, 13.1784 is called "border". The border property can be set on classes, ids or directly on the HTML element.

This example shows the color as border, it can be applied via the CSS property "border" or "border-color".

```
.border, #border, table{ border:4px solid rgb(186, 158, 140) }
```


If only the border color should be changed use the property border-color.

```
.border{ border-color:rgb(186, 158, 140) }
```

If you want to add a box shadow in that color use:

Here you see how a box with a 4 pixel rgb(186, 158, 140) colored shadow looks like.

```
.boxshadow{ -moz-box-shadow:4px 4px 4px  
4px rgb(186, 158, 140); -webkit-box-  
shadow:4px 4px 4px 4px rgb(186, 158, 140);  
box-shadow:4px 4px 4px 4px rgb(186, 158,  
140) }
```

Background

The CSS property to change the background color of an element to HunterLab 60.6517, 3.3704, 13.1784 is called "background". The background property can be set on classes, ids or directly on the HTML element.

```
.background, #background, body{  
background: rgb(186, 158, 140) }
```

If only the background color should be changed can be used:

```
.background{ background-color: rgb(186,  
158, 140) }
```

This example shows the color as background, it is applied via the CSS property "background".

To optimize and compress your CSS code, you can use our [online CSS compressor and optimizer](#) based on csstidy. If you want to create a linear or radial gradient as background or border, check our [CSS Gradient Generator](#).

Hey! You found this booklet interesting? Support Converting Colors with the new Membership Option!

The pro membership hides all ads, plus gives you double the colors in the color bucket, and more awesome pro features!

[Learn more, Memberships starting at \\$2.50/m!](#)

**Follow me
on Twitter!**

@ConvertingColor