

Converting Colors

HunterLab(60.8553, 28.2923,
-3.9404)

Have a look what the booklet for
HunterLab(60.8553, 28.2923,
-3.9404) contains.

HunterLab(60.9002, 28.0628, -4.0206)	3
<i>Conversions</i>	4
<i>Details</i>	6
<i>Harmonies</i>	12
<i>Previews</i>	24
<i>Color Blindness Simulation</i>	28
<i>CSS Examples</i>	31

Color

**HunterLab(60.9002, 28.0628,
-4.0206)**

Conversions

Conversions Part 1

Format	Color
Hex	D78EB4
RGB	215, 142, 180
RGB Percent	84%, 56%, 71%
CMY	0.1569, 0.4431, 0.2941
CMYK	0.00, 0.34, 0.16, 0.16
HSL	329°, 48%, 70%
HSV	329°, 34%, 84%
XYZ	45.9355, 37.0883, 47.9177
YIQ	168.1590, 31.3100, 27.2940

Conversions

Conversions Part 2

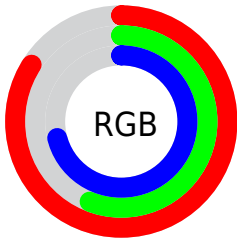
Format	Color
R _Y B	215, 142, 180
Decimal	14126772
CIE Lab	67.34, 33.14, -8.43
CIE LCh	67, 34.195, 345.726
Yxy	37.0901, 0.3508, 0.2832
Android (android.graphics.Color)	4292316852 (0xFFD78EB4)
YUV	168.1590, 5.8376, 41.0796
Hunter-Lab	60.9002, 28.0628, -4.0206

Details

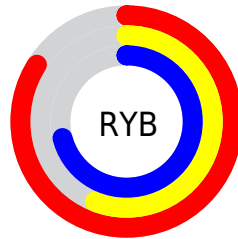
The HunterLab color $60.9002, 28.0628, -4.0206$ is a light color, and the websafe version is hex `CC99CC`. A complement of this color would be $75.8465, -30.6084, 13.6832$, and the grayscale version is $62.6102, -3.3407, 3.4017$.

A 20% lighter version of the original color is $82.0053, 22.6736, -6.4470$, and $40.2686, 26.0973, -4.2930$ is the 20% darker color. If you saturate the color by 10%, you get $55.5811, 37.7086, -5.4962$, and if you desaturate by 10%, it is $66.7478, 18.3473, -1.9792$.

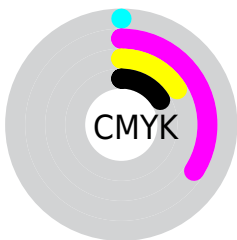
Distribution



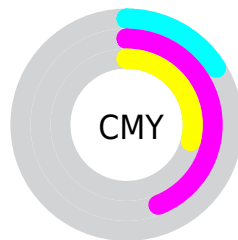
- Red (84%)
- Green (56%)
- Blue (71%)



- Red (84%)
- Yellow (56%)
- Blue (71%)



- Cyan (0%)
- Magenta (34%)
- Yellow (16%)
- Black (16%)



- Cyan (16%)
- Magenta (44%)
- Yellow (29%)

Brightness & Saturation Gradients

These gradients show how the HunterLab color 60.9002, 28.0628, -4.0206 changes by changing the brightness by 10 percent. The first figure shows a shift by +10% for each color and the second figure -10%.

Similar to the brightness gradients but the following saturation gradients show a change of the HunterLab color 60.9002, 28.0628, -4.0206 by changing the saturation by 10% instead.

60.9002, 28.0628,
-4.0206

60.9002, 28.0628,
-4.0206

182.6746, 33.3371,
-0.3210

50.2765, 27.0489,
-4.1977

84.0900, 29.7771,
-3.4992

40.3531, 25.9213,
-4.3143

96.5859, 30.5001,
-3.1660

31.1852, 24.6662,
-4.3620

109.6460, 31.1428,
-2.7886

22.8410, 23.2749,
-4.3315

123.2469, 31.7111,
-2.3697

15.4117, 21.7541,
-4.2117

137.3677, 32.2104,
-1.9115

9.0171, 20.2446,
-4.0119

151.9902, 32.6453,

0.0000, INF, -NF

-1.4162

0.0000, NaN, NaN

167.0975, 33.0197,
-0.8855

0.0000, NaN, NaN

■ 60.9002, 28.0628,
-4.0206

■ 60.9002, 28.0628,
-4.0206

■ 55.5811, 37.7086,
-5.4962

■ 66.7478, 18.3473,
-1.9792

■ 50.8806, 47.0010,
-6.2504

■ 73.0387, 8.7295,
0.4930

■ 46.9022, 55.4800,
-6.1108

■ 79.7076, -0.7185,
3.2968

■ 43.7415, 62.5337,
-4.9389

■ 86.7007, -9.9730,
6.3574

■ 41.4619, 67.5208,
-2.6985

■ 93.9744, -19.0376,
9.6201

■ 40.0583, 70.0274,
0.4733

■ 96.1089, -19.9999,
7.1200

■ 39.5159, 70.6276,
2.6243

■ 96.4395, -18.1409,
2.4055

■ 96.5335, -17.6135,
1.0679

Harmonies

Analogous

The Analogous color harmony consists of three colors that are next to each other on the color wheel.



60.9016, 19.3457, -19.7138



60.9002, 28.0628, -4.0206



60.9016, 27.8297, 10.4423

Triad

The Triadic color harmony groups three colors that are evenly spaced from another and form a triangle on the color wheel.



60.9016, 28.0604, -4.0193



60.9016, -11.0453, 24.6160



60.9016, -22.5118, -20.4002

Complementary

The Complementary color scheme is a pair of colors which are on the opposite of each other on the color wheel.



60.9002, 28.0628, -4.0206



75.8465, -30.6084, 13.6832

Split Complementary

Split-complementary colors differ from the complementary color scheme. The scheme consists of three colors, the original color and two neighbors of the complement color.



60.9016, -29.1310, -4.7935



60.9002, 28.0628, -4.0206



60.9016, -22.9717, 19.8340

Square

The Square scheme is like the rectangle color scheme, but the four colors are evenly spaced on the color wheel.



60.9016, 28.0604, -4.0193



60.9016, 4.1941, 24.7252



60.9016, -29.2905, 9.8373



60.9016, -10.3582, -30.6413

Rectangle

The Rectangle color scheme consists of four colors that form a rectangle on the color wheel.



60.9002, 28.0628, -4.0206



60.9016, 22.5987, 17.5322



60.9016, -29.2905, 9.8373



60.9016, -25.4025, -15.4566

Sweetspot

The Sweet Spot groups the original color and five complimentary colors.



60.9016, 28.0604, -4.0193



91.6696, 6.1452, 1.8669



57.8724, 21.6660, -29.8252



41.8845, 3.5983, 0.6446

0.0000, NaN, NaN



46.2646, -2.4686, 2.5136

Same Dimension

The Same Dimension uses a secret algorithm to generate beautiful new colors.



60.9016, 28.0604, -4.0193



69.0059, 42.7786, -6.2850



59.8513, 22.8049, 10.9668



35.3945, 2.0599, 0.8044



30.5961, 54.7502, 1.5263



7.6244, 13.8457, -1.1866

Inverse Universe

The Inverse Universe completely reimagines the original color for something new.



60.9016, 28.0604, -4.0193



69.0059, 42.7786, -6.2850



76.8990, -24.5188, -1.3585



35.3945, 2.0599, 0.8044



30.5961, 54.7502, 1.5263



7.6244, 13.8457, -1.1866

Previews

White Background



This preview shows how the HunterLab color 60.9002, 28.0628, -4.0206 looks on a white background.

Color Contrast Check

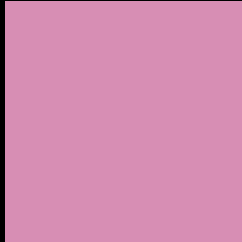
Large Text (above 18pt) WCAG AA × Fail

Any Text WCAG AA × Fail

Large Text (above 18pt) WCAG AAA × Fail

Any Text WCAG AAA × Fail

Black Background



This preview shows how the HunterLab color 60.9002, 28.0628, -4.0206 looks on a black background.

Color Contrast Check

Large Text (above 18pt) WCAG AA ✓ Pass

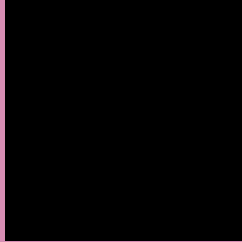
Any Text WCAG AA ✓ Pass

Large Text (above 18pt) WCAG AAA ✓ Pass

Any Text WCAG AAA ✓ Pass

If you want to check with other color combinations, try the [Color Contrast Checker](#).

HunterLab 60.9002, 28.0628, -4.0206 Background



This preview shows how black text looks on a background with the HunterLab color 60.9002, 28.0628, -4.0206.



This preview shows how white text looks on a background with the HunterLab color 60.9002, 28.0628, -4.0206.

-4.0206.

Color Blindness Simulation

Color vision deficiency is a very complex topic, and I could not describe the different causes any better than Wikipedia does, so if you want to learn more, you should check out their [article about color blindness](#).

Dichromacy



Original Color

60.9002, 28.0628, -4.0206

Protanopia

61.0850, 0.7051, -11.3169

Deuteranopia

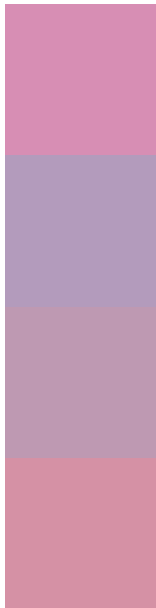
61.1800, 4.3468, -2.5351



Tritanopia

60.8187, 21.2849, 6.7523

Trichromacy



Original Color

60.9002, 28.0628, -4.0206

Protanomaly

60.5452, 10.1725, -9.1048

Deuteranomaly

60.7815, 13.0472, -3.4042

Tritanomaly

60.9209, 23.3572, 3.3037

Monochromacy



Original Color

60.9002, 28.0628, -4.0206

Achromatopsia

62.5758, -3.3389, 3.3999

Achromatomaly

61.7164, 7.2591, 0.6612

CSS Examples

Text

The CSS property to change the color of the text to HunterLab 60.9002, 28.0628, -4.0206 is called "color". The color property can be set on classes, ids or directly on the HTML element.

This example shows how text in the color `rgb(215, 142, 180)` looks like.

```
.text, #text, p{  
    color:rgb(215, 142, 180)  
}
```

If you want to add a text shadow in that color use the text-shadow property, you can generate a text shadow directly with our [CSS Text Shadow Generator](#).

Here you see how black text with a 4 pixel rgb(215, 142, 180) colored shadow looks like.

```
.shadow{ text-shadow: 4px 4px 2px rgb(215, 142, 180) }
```

Border

The CSS property to change the border of an element to HunterLab 60.9002, 28.0628, -4.0206 is called "border". The border property can be set on classes, ids or directly on the HTML element.

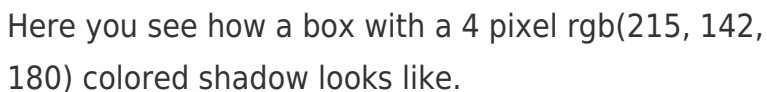
This example shows the color as border, it can be applied via the CSS property "border" or "border-color".

```
.border, #border, table{ border:4px solid rgb(215, 142, 180) }
```


If only the border color should be changed use the property `border-color`.

```
.border{ border-color:rgb(215, 142, 180) }
```

If you want to add a box shadow in that color use:



Here you see how a box with a 4 pixel `rgb(215, 142, 180)` colored shadow looks like.

```
.boxshadow{ -moz-box-shadow:4px 4px 4px  
4px rgb(215, 142, 180); -webkit-box-  
shadow:4px 4px 4px 4px rgb(215, 142, 180);  
box-shadow:4px 4px 4px 4px rgb(215, 142,  
180) }
```

Background

The CSS property to change the background color of an element to HunterLab 60.9002, 28.0628, -4.0206 is called "background". The background property can be set on classes, ids or directly on the HTML element.

```
.background, #background, body{  
background: rgb(215, 142, 180) }
```

If only the background color should be changed can be used:

```
.background{ background-color: rgb(215,  
142, 180) }
```

This example shows the color as background, it is applied via the CSS property "background".

To optimize and compress your CSS code, you can use our [online CSS compressor and optimizer](#) based on csstidy. If you want to create a linear or radial gradient as background or border, check our [CSS Gradient Generator](#).

Hey! You found this booklet interesting? Support Converting Colors with the new Membership Option!

The pro membership hides all ads, plus gives you double the colors in the color bucket, and more awesome pro features!

[Learn more, Memberships starting at \\$2.50/m!](#)

**Follow me
on Twitter!**

@ConvertingColor