

Converting Colors

HunterLab(60.8813, 3.3406,
19.6422)

Have a look what the booklet for
HunterLab(60.8813, 3.3406,
19.6422) contains.

HunterLab(60.8813, 3.3406, 19.6422)	3
<i>Conversions</i>	4
<i>Details</i>	6
<i>Harmonies</i>	12
<i>Previews</i>	24
<i>Color Blindness Simulation</i>	28
<i>CSS Examples</i>	31

Color

**HunterLab(60.8813, 3.3406,
19.6422)**

Conversions

Conversions Part 1

Format	Color
Hex	C09E7A
RGB	192, 158, 122
RGB Percent	75%, 62%, 48%
CMY	0.2471, 0.3804, 0.5216
CMYK	0.00, 0.18, 0.36, 0.25
HSL	31°, 36%, 62%
HSV	31°, 36%, 75%
XYZ	37.4779, 37.0653, 23.5913
YIQ	164.0620, 31.8200, -3.9880

Conversions

Conversions Part 2

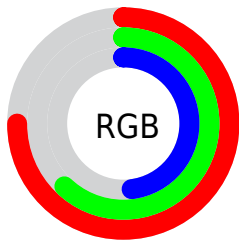
Format	Color
RYB	188, 192, 122
Decimal	12623482
CIELab	67.33, 7.48, 23.54
CIElCh	67, 24.703, 72.371
Yxy	37.0671, 0.3819, 0.3777
Android (android.graphics.Color)	4290813562 (0xFFC09E7A)
YUV	164.0620, -20.7366, 24.5016
Hunter-Lab	60.8813, 3.3406, 19.6422

Details

The HunterLab color $60.8813, 3.3406, 19.6422$ is a light color, and the websafe version is hex $CC9966$. A complement of this color would be $56.3198, -5.2888, -17.8878$, and the grayscale version is $61.0291, -3.2564, 3.3158$.

A 20% lighter version of the original color is $84.1566, 2.4696, 23.3266$, and $40.3916, 3.4555, 15.6971$ is the 20% darker color. If you saturate the color by 10%, you get $57.9445, 6.0258, 22.7341$, and if you desaturate by 10%, it is $63.9483, 0.9716, 15.9851$.

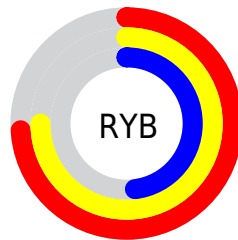
Distribution



Red (75%)

Green (62%)

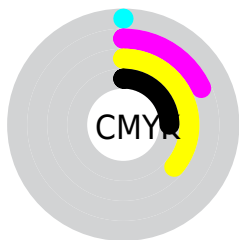
Blue (48%)



Red (74%)

Yellow (75%)

Blue (48%)

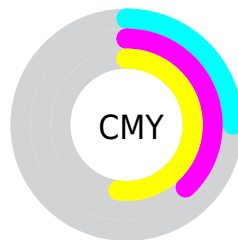


Cyan (0%)

Magenta (18%)

Yellow (36%)

Black (25%)



Cyan (25%)

Magenta (38%)

Yellow (52%)

Brightness & Saturation Gradients

These gradients show how the HunterLab color 60.8813, 3.3406, 19.6422 changes by changing the brightness by 10 percent. The first figure shows a shift by +10% for each color and the second figure -10%.

Similar to the brightness gradients but the following saturation gradients show a change of the HunterLab color 60.8813, 3.3406, 19.6422 by changing the saturation by 10% instead.

■ 60.8813, 3.3406,
19.6422

■ 60.8813, 3.3406,
19.6422

182.6474, -0.3525,
35.6719

■ 50.2587, 3.5151,
17.6958

■ 84.0690, 2.8189,
23.3746

■ 40.3366, 3.6283,
15.6692

■ 96.5639, 2.4858,
25.1840

■ 31.1701, 3.6687,
13.5340

■ 109.6231, 2.1086,
26.9674

■ 22.8274, 3.6241,
11.2458

123.2230, 1.6901,
28.7311

■ 15.3997, 3.4759,
9.0756

137.3430, 1.2327,
30.4798

■ 9.0065, 3.2381,
6.3046

151.9646, 0.7387,

0.0000, NaN, NaN

32.2175

0.0000, NaN, NaN

167.0711, 0.2097,
33.9474

0.0000, NaN, NaN

■ 60.8813, 3.3406,
19.6422

■ 60.8813, 3.3406,
19.6422

■ 57.9445, 6.0258,
22.7341

■ 63.9483, 0.9716,
15.9851

■ 55.1442, 9.0460,
25.2076

■ 67.1315, -1.0909,
11.8113

■ 52.4927, 12.4028,
27.0164

■ 70.4232, -2.8682,
7.1696

■ 50.0011, 16.0886,
28.1241

■ 73.8153, -4.3806,
2.1047

■ 47.6797, 20.0783,
28.5162

■ 77.3002, -5.6481,
-3.3431

■ 45.5362, 24.3181,
28.2306

■ 80.8713, -6.6901,
-9.1375

■ 44.8149, 25.8378,
28.0671

■ 84.4688, -7.8208,
-14.4943

■ 87.4522, -12.5831,
-10.4739

■ 90.4912, -17.2850,
-6.5295

Harmonies

Analogous

The Analogous color harmony consists of three colors that are next to each other on the color wheel.



60.8827, 13.3079, 15.4554



60.8813, 3.3406, 19.6422



60.8827, -7.7510, 19.9779

Triad

The Triadic color harmony groups three colors that are evenly spaced from another and form a triangle on the color wheel.



60.8827, 3.3383, 19.6430



60.8827, -22.7028, -1.1916



60.8827, 11.7878, -13.6482

Complementary

The Complementary color scheme is a pair of colors which are on the opposite of each other on the color wheel.



60.8813, 3.3406, 19.6422



56.3198, -5.2888, -17.8878

Split Complementary

Split-complementary colors differ from the complementary color scheme. The scheme consists of three colors, the original color and two neighbors of the complement color.



60.8827, 1.3819, -20.0022



60.8813, 3.3406, 19.6422



60.8827, -18.2113, -11.9941

Square

The Square scheme is like the rectangle color scheme, but the four colors are evenly spaced on the color wheel.



60.8827, 3.3383, 19.6430



60.8827, -22.2617, 9.1400



60.8827, -9.5730, -19.3478



60.8827, 18.4209, -3.1515

Rectangle

The Rectangle color scheme consists of four colors that form a rectangle on the color wheel.



60.8813, 3.3406, 19.6422



60.8827, -14.2478, 18.0714



60.8827, -9.5730, -19.3478



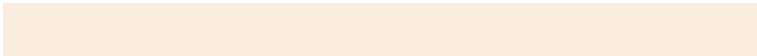
60.8827, 8.5846, -16.4171

Sweetspot

The Sweet Spot groups the original color and five complimentary colors.



60.8827, 3.3383, 19.6430



92.6874, -2.7781, 12.6736



52.4978, 26.3987, -3.2146



42.6508, -1.1345, 6.2640



98.8636, -5.2751, 5.3714



45.2661, -2.4153, 2.4594

Same Dimension

The Same Dimension uses a secret algorithm to generate beautiful new colors.



60.8827, 3.3383, 19.6430



78.6784, 7.4452, 29.9310



70.9302, -13.1456, 28.0856



33.0385, -1.1313, 4.0761



36.9740, 20.7099, 23.1458



8.5339, 2.4941, 5.3022

Inverse Universe

The Inverse Universe completely reimagines the original color for something new.



56.3198, -5.2888, -17.8878



71.2453, -6.4439, -31.4093



46.7577, 11.7054, -34.2187



32.4612, -2.2419, -0.6484



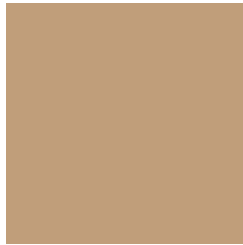
28.3064, 8.0250, -52.7042



6.9583, -0.2899, -8.0715

Previews

White Background



This preview shows how the HunterLab color 60.8813, 3.3406, 19.6422 looks on a white background.

Color Contrast Check

Large Text (above 18pt) WCAG AA × Fail

Any Text WCAG AA × Fail

Large Text (above 18pt) WCAG AAA × Fail

Any Text WCAG AAA × Fail

Black Background



This preview shows how the HunterLab color 60.8813, 3.3406, 19.6422 looks on a black background.

Color Contrast Check

Large Text (above 18pt) WCAG AA ✓ Pass

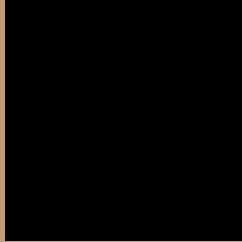
Any Text WCAG AA ✓ Pass

Large Text (above 18pt) WCAG AAA ✓ Pass

Any Text WCAG AAA ✓ Pass

If you want to check with other color combinations, try the [Color Contrast Checker](#).

HunterLab 60.8813, 3.3406, 19.6422 Background



This preview shows how black text looks on a background with the HunterLab color 60.8813, 3.3406, 19.6422.



This preview shows how white text looks on a background with the HunterLab color 60.8813, 3.3406,

Color Blindness Simulation

Color vision deficiency is a very complex topic, and I could not describe the different causes any better than Wikipedia does, so if you want to learn more, you should check out their [article about color blindness](#).

Dichromacy



Original Color

60.8813, 3.3406, 19.6422

Protanopia

61.0424, -4.8233, 18.6845

Deuteranopia

60.8181, 4.5633, 19.6060



Tritanopia

60.7228, 13.3588, 3.3577

Trichromacy



Original Color

60.8813, 3.3406, 19.6422

Protanomaly

61.0254, -1.9333, 19.0432

Deuteranomaly

60.7096, 4.1995, 19.5007

Tritanomaly

60.7316, 9.7758, 9.8348

Monochromacy



Original Color

60.8813, 3.3406, 19.6422

Achromatopsia

60.9293, -3.2510, 3.3104

Achromatomaly

60.8352, -1.4168, 9.7500

CSS Examples

Text

The CSS property to change the color of the text to HunterLab 60.8813, 3.3406, 19.6422 is called "color". The color property can be set on classes, ids or directly on the HTML element.

This example shows how text in the color `rgb(192, 158, 122)` looks like.

```
.text, #text, p{  
    color:rgb(192, 158, 122)  
}
```

If you want to add a text shadow in that color use the text-shadow property, you can generate a text shadow directly with our [CSS Text Shadow Generator](#).

Here you see how black text with a 4 pixel rgb(192, 158, 122) colored shadow looks like.

```
.shadow{ text-shadow: 4px 4px 2px rgb(192, 158, 122) }
```

Border

The CSS property to change the border of an element to HunterLab 60.8813, 3.3406, 19.6422 is called "border". The border property can be set on classes, ids or directly on the HTML element.

This example shows the color as border, it can be applied via the CSS property "border" or "border-color".

```
.border, #border, table{ border:4px solid rgb(192, 158, 122) }
```


If only the border color should be changed use the property `border-color`.

```
.border{ border-color:rgb(192, 158, 122) }
```

If you want to add a box shadow in that color use:

Here you see how a box with a 4 pixel `rgb(192, 158, 122)` colored shadow looks like.

```
.boxshadow{ -moz-box-shadow:4px 4px 4px  
4px rgb(192, 158, 122); -webkit-box-  
shadow:4px 4px 4px 4px rgb(192, 158, 122);  
box-shadow:4px 4px 4px 4px rgb(192, 158,  
122) }
```

Background

The CSS property to change the background color of an element to HunterLab 60.8813, 3.3406, 19.6422 is called "background". The background property can be set on classes, ids or directly on the HTML element.

```
.background, #background, body{  
background: rgb(192, 158, 122) }
```

If only the background color should be changed can be used:

```
.background{ background-color: rgb(192,  
158, 122) }
```

This example shows the color as background, it is applied via the CSS property "background".

To optimize and compress your CSS code, you can use our [online CSS compressor and optimizer](#) based on csstidy. If you want to create a linear or radial gradient as background or border, check our [CSS Gradient Generator](#).

Hey! You found this booklet interesting? Support Converting Colors with the new Membership Option!

The pro membership hides all ads, plus gives you double the colors in the color bucket, and more awesome pro features!

[Learn more, Memberships starting at \\$2.50/m!](#)

**Follow me
on Twitter!**

@ConvertingColor