

# Converting Colors

HunterLab(60.8903, 27.5133,  
-0.0020)

Have a look what the booklet for  
HunterLab(60.8903, 27.5133,  
-0.0020) contains.

<b>HunterLab(60.8903, 27.5133, -0.0020)</b> .....	3
<b><i>Conversions</i></b> .....	4
<b><i>Details</i></b> .....	6
<b><i>Harmonies</i></b> .....	12
<b><i>Previews</i></b> .....	24
<b><i>Color Blindness Simulation</i></b> .....	28
<b><i>CSS Examples</i></b> .....	31

# Color

**HunterLab(60.8903, 27.5133,  
-0.0020)**

# Conversions

## Conversions Part 1

<b>Format</b>	<b>Color</b>
Hex	D98EAC
RGB	217, 142, 172
RGB Percent	85%, 56%, 67%
CMY	0.1490, 0.4431, 0.3255
CMYK	0.00, 0.35, 0.21, 0.15
HSL	336°, 50%, 70%
HSV	336°, 35%, 85%
XYZ	45.7347, 37.0763, 43.7757
YIQ	167.8450, 35.0700, 25.2300

# Conversions

## Conversions Part 2

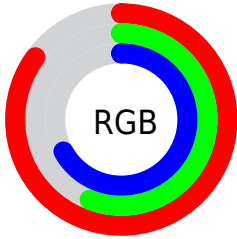
<b>Format</b>	<b>Color</b>
R <sub>Y</sub> B	217, 142, 172
Decimal	14257836
CIE Lab	67.34, 32.61, -3.93
CIE LCh	67, 32.841, 353.126
Yxy	37.0780, 0.3613, 0.2929
Android (android.graphics.Color)	4292447916 (0xFFD98EAC)
YUV	167.8450, 2.0484, 43.1089
Hunter-Lab	60.8903, 27.5133, -0.0020

# Details

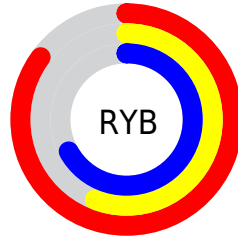
The HunterLab color  $60.8903, 27.5133, -0.0020$  is a light color, and the websafe version is hex  $FF99CC$ . A complement of this color would be  $76.7889, -29.9164, 10.4910$ , and the grayscale version is  $62.4947, -3.3346, 3.3955$ .

A 20% lighter version of the original color is  $81.6937, 21.0664, -2.0351$ , and  $40.3057, 25.7630, -0.8516$  is the 20% darker color. If you saturate the color by 10%, you get  $55.4625, 36.9063, -0.2331$ , and if you desaturate by 10%, it is  $66.8589, 18.0822, 0.8012$ .

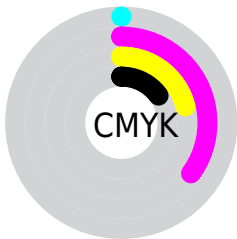
# Distribution



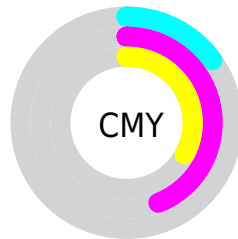
- Red (85%)
- Green (56%)
- Blue (67%)



- Red (85%)
- Yellow (56%)
- Blue (67%)



- Cyan (0%)
- Magenta (35%)
- Yellow (21%)
- Black (15%)



- Cyan (15%)
- Magenta (44%)
- Yellow (33%)

# Brightness & Saturation Gradients

These gradients show how the HunterLab color 60.8903, 27.5133, -0.0020 changes by changing the brightness by 10 percent. The first figure shows a shift by +10% for each color and the second figure -10%.

Similar to the brightness gradients but the following saturation gradients show a change of the HunterLab color 60.8903, 27.5133, -0.0020 by changing the saturation by 10% instead.



60.8903, 27.5133,  
-0.0020

60.8903, 27.5133,  
-0.0020

182.6604, 32.6128,  
5.2284

50.2672, 26.5213,  
-0.3853

84.0790, 29.1850,  
0.9043

40.3445, 25.4161,  
-0.7189

96.5744, 29.8877,  
1.4183

31.1773, 24.1836,  
-0.9958

109.6340, 30.5104,  
1.9699

22.8338, 22.8143,  
-1.2081

123.2344, 31.0595,  
2.5570

15.4054, 21.3128,  
-1.3446

137.3548, 31.5399,  
3.1779

9.0116, 19.8154,  
-1.4056

151.9768, 31.9564,

0.0000, INF, NaN

3.8310

0.0000, NaN, NaN

167.0837, 32.3129,  
4.5149

0.0000, NaN, NaN

■ 60.8903, 27.5133,  
-0.0020

■ 60.8903, 27.5133,  
-0.0020

■ 55.4625, 36.9063,  
-0.2331

■ 66.8589, 18.0822,  
0.8012

■ 50.6704, 45.9848,  
0.2272

■ 73.2795, 8.7726,  
2.0605

■ 46.6241, 54.2890,  
1.4897

■ 80.0843, -0.3516,  
3.6846

■ 43.4256, 61.1992,  
3.6048

■ 87.2177, -9.2727,  
5.6005

■ 41.1426, 66.0617,  
6.5039

■ 94.6353, -17.9989,  
7.7519

■ 39.7693, 68.4638,  
9.9600

■ 96.5307, -17.9446,  
3.5536

■ 39.2894, 69.0270,  
11.8783

■ 96.6912, -17.0452,  
1.2698

# Harmonies

## Analogous

The Analogous color harmony consists of three colors that are next to each other on the color wheel.



60.8917, 21.1135, -15.1800



60.8903, 27.5133, -0.0020



60.8917, 25.0591, 12.9793

# Triad

The Triadic color harmony groups three colors that are evenly spaced from another and form a triangle on the color wheel.



60.8917, 27.5108, -0.0007



60.8917, -13.9865, 23.2580



60.8917, -19.3397, -22.4315

# Complementary

The Complementary color scheme is a pair of colors which are on the opposite of each other on the color wheel.



60.8903, 27.5133, -0.0020



76.7889, -29.9164, 10.4910

# Split Complementary

Split-complementary colors differ from the complementary color scheme. The scheme consists of three colors, the original color and two neighbors of the complement color.



60.8917, -27.1815, -8.2511



60.8903, 27.5133, -0.0020



60.8917, -24.3023, 17.3721

# Square

The Square scheme is like the rectangle color scheme, but the four colors are evenly spaced on the color wheel.



60.8917, 27.5108, -0.0007



60.8917, 0.1764, 24.4624



60.8917, -28.9082, 6.4532



60.8917, -6.6067, -29.9792



# Rectangle

The Rectangle color scheme consists of four colors that form a rectangle on the color wheel.



60.8903, 27.5133, -0.0020



60.8917, 18.8394, 19.0119



60.8917, -28.9082, 6.4532



60.8917, -22.5840, -18.1413

# Sweetspot

The Sweet Spot groups the original color and five complimentary colors.



60.8917, 27.5108, -0.0007



91.5692, 5.6070, 3.2965



59.0953, 25.5376, -29.0010



41.8314, 3.3148, 1.4002

0.0000, NaN, NaN



46.2646, -2.4686, 2.5136



# Same Dimension

The Same Dimension uses a secret algorithm to generate beautiful new colors.



60.8917, 27.5108, -0.0007



68.5815, 40.7338, -0.2741



61.9354, 19.3616, 14.0031



36.2455, 1.9252, 1.3472



30.6006, 53.8230, 8.7774



7.8954, 14.0893, 0.6980



# Inverse Universe

The Inverse Universe completely reimagines the original color for something new.



60.8917, 27.5108, -0.0007



68.5815, 40.7338, -0.2741



75.2385, -21.1005, -5.7387



36.2455, 1.9252, 1.3472



30.6006, 53.8230, 8.7774



7.8954, 14.0893, 0.6980



# Previews

## White Background



This preview shows how the HunterLab color 60.8903, 27.5133, -0.0020 looks on a white background.

## Color Contrast Check

Large Text (above 18pt) WCAG AA × Fail

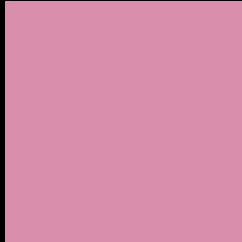
Any Text WCAG AA × Fail

Large Text (above 18pt) WCAG AAA × Fail

Any Text WCAG AAA × Fail



# Black Background



This preview shows how the HunterLab color 60.8903, 27.5133, -0.0020 looks on a black background.

## Color Contrast Check

Large Text (above 18pt) WCAG AA ✓ Pass

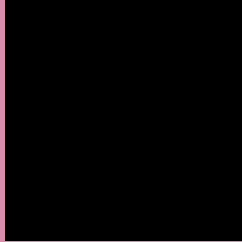
Any Text WCAG AA ✓ Pass

Large Text (above 18pt) WCAG AAA ✓ Pass

Any Text WCAG AAA ✓ Pass

If you want to check with other color combinations, try the [Color Contrast Checker](#).

# HunterLab 60.8903, 27.5133, -0.0020 Background



This preview shows how black text looks on a background with the HunterLab color 60.8903, 27.5133, -0.0020.



This preview shows how white text looks on a background with the HunterLab color 60.8903, 27.5133, -0.0020.

-0.0020.

# Color Blindness Simulation

Color vision deficiency is a very complex topic, and I could not describe the different causes any better than Wikipedia does, so if you want to learn more, you should check out their [article about color blindness](#).

## Dichromacy



### Original Color

60.8903, 27.5133, -0.0020

### Protanopia

61.0526, 0.0255, -6.9530

### Deuteranopia

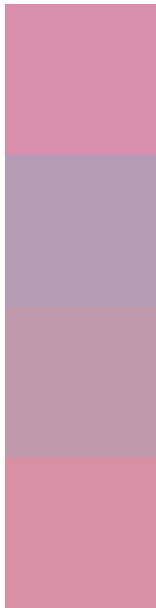
60.9310, 4.4582, 1.0982



## Tritanopia

60.9083, 22.7995, 7.3137

# Trichromacy



## Original Color

60.8903, 27.5133, -0.0020

## Protanomaly

60.4663, 9.3603, -4.9171

## Deuteranomaly

60.7381, 12.3940, 0.5201

## Tritanomaly

60.9541, 24.5642, 4.7405

# Monochromacy



## Original Color

60.8903, 27.5133, -0.0020

## Achromatopsia

62.5758, -3.3389, 3.3999

## Achromatomaly

61.7252, 7.1035, 2.1039

# CSS Examples

## Text

The CSS property to change the color of the text to HunterLab 60.8903, 27.5133, -0.0020 is called "color". The color property can be set on classes, ids or directly on the HTML element.

This example shows how text in the color `rgb(217, 142, 172)` looks like.

```
.text, #text, p{  
    color:rgb(217, 142, 172)  
}
```

If you want to add a text shadow in that color use the text-shadow property, you can generate a text shadow directly with our [CSS Text Shadow Generator](#).

Here you see how black text with a 4 pixel rgb(217, 142, 172) colored shadow looks like.

```
.shadow{ text-shadow: 4px 4px 2px rgb(217, 142, 172) }
```

## Border

The CSS property to change the border of an element to HunterLab 60.8903, 27.5133, -0.0020 is called "border". The border property can be set on classes, ids or directly on the HTML element.

This example shows the color as border, it can be applied via the CSS property "border" or "border-color".

```
.border, #border, table{ border:4px solid rgb(217, 142, 172) }
```



If only the border color should be changed use the property border-color.

```
.border{ border-color:rgb(217, 142, 172) }
```

If you want to add a box shadow in that color use:

Here you see how a box with a 4 pixel rgb(217, 142, 172) colored shadow looks like.

```
.boxshadow{ -moz-box-shadow:4px 4px 4px  
4px rgb(217, 142, 172); -webkit-box-  
shadow:4px 4px 4px 4px rgb(217, 142, 172);  
box-shadow:4px 4px 4px 4px rgb(217, 142,  
172) }
```

# Background

The CSS property to change the background color of an element to HunterLab 60.8903, 27.5133, -0.0020 is called "background". The background property can be set on classes, ids or directly on the HTML element.

```
.background, #background, body{  
background: rgb(217, 142, 172) }
```

If only the background color should be changed can be used:

```
.background{ background-color: rgb(217,  
142, 172) }
```

This example shows the color as background, it is applied via the CSS property "background".

To optimize and compress your CSS code, you can use our [online CSS compressor and optimizer](#) based on csstidy. If you want to create a linear or radial gradient as background or border, check our [CSS Gradient Generator](#).

Hey! You found this booklet interesting? Support Converting Colors with the new Membership Option!

The pro membership hides all ads, plus gives you double the colors in the color bucket, and more awesome pro features!

**[Learn more, Memberships starting at \\$2.50/m!](#)**

**Follow me  
on Twitter!**

@ConvertingColor