

Converting Colors

HunterLab(60.9069, 9.3202,
18.3142)

Have a look what the booklet for
HunterLab(60.9069, 9.3202,
18.3142) contains.

HunterLab(60.8778, 9.2051, 18.1187)	3
<i>Conversions</i>	4
<i>Details</i>	6
<i>Harmonies</i>	12
<i>Previews</i>	24
<i>Color Blindness Simulation</i>	28
<i>CSS Examples</i>	31

Color

**HunterLab(60.8778, 9.2051,
18.1187)**

Conversions

Conversions Part 1

Format	Color
Hex	C99A7F
RGB	201, 154, 127
RGB Percent	79%, 60%, 50%
CMY	0.2118, 0.3961, 0.5020
CMYK	0.00, 0.23, 0.37, 0.21
HSL	22°, 41%, 64%
HSV	22°, 37%, 79%
XYZ	39.4738, 37.0611, 25.1518
YIQ	164.9750, 36.6790, 1.5670

Conversions

Conversions Part 2

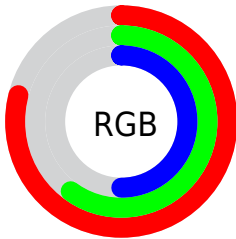
Format	Color
R_{YB}	201, 170, 127
Decimal	13212287
CIE _{Lab}	67.32, 13.89, 20.95
CIE _{LCh}	67, 25.133, 56.447
Yxy	37.0628, 0.3882, 0.3645
Android (android.graphics.Color)	4291402367 (0xFFC99A7F)
YUV	164.9750, -18.7217, 31.5939
Hunter-Lab	60.8778, 9.2051, 18.1187

Details

The HunterLab color $60.8778, 9.2051, 18.1187$ is a light color, and the websafe version is hex $CC9966$. A complement of this color would be $62.4499, -10.8746, -14.1714$, and the grayscale version is $61.3950, -3.2759, 3.3357$.

A 20% lighter version of the original color is $83.4668, 7.9835, 20.8990$, and $40.3365, 8.6345, 14.4118$ is the 20% darker color. If you saturate the color by 10%, you get $57.0944, 13.5621, 21.0020$, and if you desaturate by 10%, it is $64.8696, 5.1813, 14.7953$.

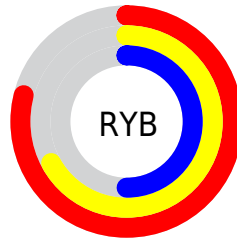
Distribution



Red (79%)

Green (60%)

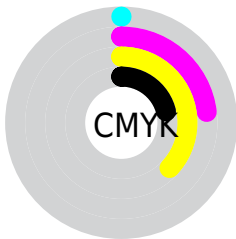
Blue (50%)



Red (79%)

Yellow (67%)

Blue (50%)

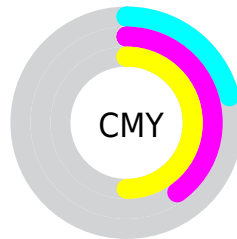


Cyan (0%)

Magenta (23%)

Yellow (37%)

Black (21%)



Cyan (21%)

Magenta (40%)

Yellow (50%)

Brightness & Saturation Gradients

These gradients show how the HunterLab color 60.8778, 9.2051, 18.1187 changes by changing the brightness by 10 percent. The first figure shows a shift by +10% for each color and the second figure -10%.

Similar to the brightness gradients but the following saturation gradients show a change of the HunterLab color 60.8778, 9.2051, 18.1187 by changing the saturation by 10% instead.

■ 60.8778, 9.2051,
18.1187

■ 60.8778, 9.2051,
18.1187

182.6424, 7.8534,
33.0374

■ 50.2555, 9.0598,
16.3371

■ 84.0651, 9.2764,
21.5558

■ 40.3336, 8.8344,
14.4902

■ 96.5599, 9.2206,
23.2311

■ 31.1673, 8.5139,
12.5532

■ 109.6188, 9.1098,
24.8876

■ 22.8248, 8.0816,
10.4869

123.2186, 8.9481,
26.5305

■ 15.3975, 7.5134,
8.3760

137.3384, 8.7389,
28.1640

■ 9.0046, 6.8249,
6.3032

151.9598, 8.4851,

0.0000, INF, NaN

29.7913

0.0000, NaN, NaN

167.0662, 8.1892,
31.4151

0.0000, NaN, NaN

■ 60.8778, 9.2051,
18.1187

■ 60.8778, 9.2051,
18.1187

■ 57.0944, 13.5621,
21.0020

■ 64.8696, 5.1813,
14.7953

■ 53.5397, 18.2634,
23.3724

■ 69.0436, 1.4819,
11.0918

■ 50.2427, 23.2895,
25.1559

■ 73.3823, -1.9186,
7.0621

■ 47.2325, 28.5916,
26.2818

■ 77.8692, -5.0457,
2.7512

■ 44.5389, 34.0767,
26.7008

■ 82.4902, -7.9256,
-1.8039

■ 42.1872, 39.5903,
26.4303

■ 87.2329, -10.5831,
-6.5726

■ 41.5074, 41.2933,
26.2996

■ 91.6268, -15.6094,
-5.0321

■ 95.4764, -21.4490,
-0.2939

Harmonies

Analogous

The Analogous color harmony consists of three colors that are next to each other on the color wheel.



60.8792, 17.4047, 11.8034



60.8778, 9.2051, 18.1187



60.8792, -1.9021, 20.5158

Triad

The Triadic color harmony groups three colors that are evenly spaced from another and form a triangle on the color wheel.



60.8792, 9.2026, 18.1196



60.8792, -23.4173, 4.5782



60.8792, 6.7099, -18.1985

Complementary

The Complementary color scheme is a pair of colors which are on the opposite of each other on the color wheel.



60.8778, 9.2051, 18.1187



62.4499, -10.8746, -14.1714

Split Complementary

Split-complementary colors differ from the complementary color scheme. The scheme consists of three colors, the original color and two neighbors of the complement color.



60.8792, -4.5895, -21.0778



60.8778, 9.2051, 18.1187



60.8792, -21.4751, -6.6074

Square

The Square scheme is like the rectangle color scheme, but the four colors are evenly spaced on the color wheel.



60.8792, 9.2026, 18.1196



60.8792, -20.2890, 13.6477



60.8792, -14.7788, -16.5045



60.8792, 15.8935, -9.2248

Rectangle

The Rectangle color scheme consists of four colors that form a rectangle on the color wheel.



60.8778, 9.2051, 18.1187



60.8792, -9.2702, 19.9632



60.8792, -14.7788, -16.5045



60.8792, 3.0102, -19.9744

Sweetspot

The Sweet Spot groups the original color and five complimentary colors.



60.8792, 9.2026, 18.1196



93.5305, -0.6257, 11.5768



55.4038, 30.0621, -8.7919



42.9104, -0.0065, 5.6914

0.0000, NaN, NaN



46.2646, -2.4686, 2.5136

Same Dimension

The Same Dimension uses a secret algorithm to generate beautiful new colors.



60.8792, 9.2026, 18.1196



75.7707, 16.4527, 26.7054



71.2275, -8.5924, 27.0256



33.5561, -0.4992, 3.7720



33.1557, 32.0893, 20.9922



8.1133, 4.7536, 5.0826

Inverse Universe

The Inverse Universe completely reimagines the original color for something new.



62.4499, -10.8746, -14.1714



78.2068, -14.9728, -23.7953



51.8992, 6.8484, -31.0276



33.7513, -2.9586, -0.1896



35.3281, -3.4995, -36.6026



8.5171, -2.0409, -6.2399

Previews

White Background



This preview shows how the HunterLab color 60.8778, 9.2051, 18.1187 looks on a white background.

Color Contrast Check

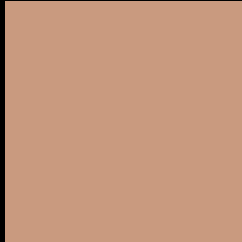
Large Text (above 18pt) WCAG AA × Fail

Any Text WCAG AA × Fail

Large Text (above 18pt) WCAG AAA × Fail

Any Text WCAG AAA × Fail

Black Background



This preview shows how the HunterLab color 60.8778, 9.2051, 18.1187 looks on a black background.

Color Contrast Check

Large Text (above 18pt) WCAG AA ✓ Pass

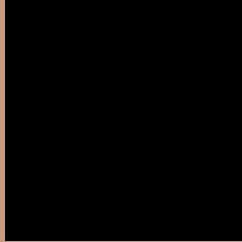
Any Text WCAG AA ✓ Pass

Large Text (above 18pt) WCAG AAA ✓ Pass

Any Text WCAG AAA ✓ Pass

If you want to check with other color combinations, try the [Color Contrast Checker](#).

HunterLab 60.8778, 9.2051, 18.1187 Background



This preview shows how black text looks on a background with the HunterLab color 60.8778, 9.2051, 18.1187.



This preview shows how white text looks on a background with the HunterLab color 60.8778, 9.2051,

Color Blindness Simulation

Color vision deficiency is a very complex topic, and I could not describe the different causes any better than Wikipedia does, so if you want to learn more, you should check out their [article about color blindness](#).

Dichromacy



Original Color

60.8778, 9.2051, 18.1187

Protanopia

61.0045, -4.6522, 16.2930

Deuteranopia

61.0717, 4.1470, 18.5419



Tritanopia

60.7499, 17.3372, 4.8294

Trichromacy



Original Color

60.8778, 9.2051, 18.1187

Protanomaly

60.7813, 0.4345, 16.8598

Deuteranomaly

61.1196, 5.7365, 18.6143

Tritanomaly

60.8273, 14.2203, 10.0153

Monochromacy



Original Color

60.8778, 9.2051, 18.1187

Achromatopsia

61.3402, -3.2730, 3.3327

Achromatomaly

60.9829, 0.6761, 9.1238

CSS Examples

Text

The CSS property to change the color of the text to HunterLab 60.8778, 9.2051, 18.1187 is called "color". The color property can be set on classes, ids or directly on the HTML element.

This example shows how text in the color `rgb(201, 154, 127)` looks like.

```
.text, #text, p{  
    color:rgb(201, 154, 127)  
}
```

If you want to add a text shadow in that color use the text-shadow property, you can generate a text shadow directly with our [CSS Text Shadow Generator](#).

Here you see how black text with a 4 pixel rgb(201, 154, 127) colored shadow looks like.

```
.shadow{ text-shadow: 4px 4px 2px rgb(201, 154, 127) }
```

Border

The CSS property to change the border of an element to HunterLab 60.8778, 9.2051, 18.1187 is called "border". The border property can be set on classes, ids or directly on the HTML element.

This example shows the color as border, it can be applied via the CSS property "border" or "border-color".

```
.border, #border, table{ border:4px solid rgb(201, 154, 127) }
```


If only the border color should be changed use the property `border-color`.

```
.border{ border-color:rgb(201, 154, 127) }
```

If you want to add a box shadow in that color use:

Here you see how a box with a 4 pixel `rgb(201, 154, 127)` colored shadow looks like.

```
.boxshadow{ -moz-box-shadow:4px 4px 4px  
4px rgb(201, 154, 127); -webkit-box-  
shadow:4px 4px 4px 4px rgb(201, 154, 127);  
box-shadow:4px 4px 4px 4px rgb(201, 154,  
127) }
```

Background

The CSS property to change the background color of an element to HunterLab 60.8778, 9.2051, 18.1187 is called "background". The background property can be set on classes, ids or directly on the HTML element.

```
.background, #background, body{  
background: rgb(201, 154, 127) }
```

If only the background color should be changed can be used:

```
.background{ background-color: rgb(201,  
154, 127) }
```

This example shows the color as background, it is applied via the CSS property "background".

To optimize and compress your CSS code, you can use our [online CSS compressor and optimizer](#) based on csstidy. If you want to create a linear or radial gradient as background or border, check our [CSS Gradient Generator](#).

Hey! You found this booklet interesting? Support Converting Colors with the new Membership Option!

The pro membership hides all ads, plus gives you double the colors in the color bucket, and more awesome pro features!

[Learn more, Memberships starting at \\$2.50/m!](#)

**Follow me
on Twitter!**

@ConvertingColor