

Converting Colors

HunterLab(60.9352, 5.5691,
3.7739)

Have a look what the booklet for
HunterLab(60.9352, 5.5691, 3.7739)
contains.

HunterLab(60.9634, 5.6497, 3.9650)	3
<i>Conversions</i>	4
<i>Details</i>	6
<i>Harmonies</i>	12
<i>Previews</i>	24
<i>Color Blindness Simulation</i>	28
<i>CSS Examples</i>	31

Color

**HunterLab(60.9634, 5.6497,
3.9650)**

Conversions

Conversions Part 1

Format	Color
Hex	B79EA3
RGB	183, 158, 163
RGB Percent	72%, 62%, 64%
CMY	0.2823, 0.3804, 0.3608
CMYK	0.00, 0.14, 0.11, 0.28
HSL	348°, 15%, 67%
HSV	348°, 14%, 72%
XYZ	38.3662, 37.1654, 39.8019
YIQ	166.0450, 13.2950, 6.8550

Conversions

Conversions Part 2

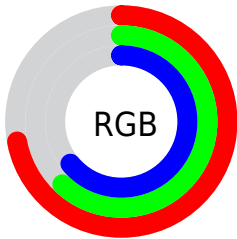
Format	Color
R_{YB}	183, 158, 163
Decimal	12033699
CIE _{Lab}	67.40, 10.03, 0.79
CIE _{LCh}	67, 10.064, 4.519
Yxy	37.1670, 0.3327, 0.3222
Android (android.graphics.Color)	4290223779 (0xFFB79EA3)
YUV	166.0450, -1.5012, 14.8695
Hunter-Lab	60.9634, 5.6497, 3.9650

Details

The HunterLab color **60.9634, 5.6497, 3.9650** is a light color, and the websafe version is hex **999999**. A complement of this color would be **66.5968, -11.8212, 3.3296**, and the grayscale version is **61.7734, -3.2961, 3.3563**.

A 20% lighter version of the original color is **84.2622, 5.1620, 5.3403**, and **40.5079, 5.4892, 3.0449** is the 20% darker color. If you saturate the color by 10%, you get **55.5759, 12.7067, 4.4194**, and if you desaturate by 10%, it is **66.6616, -1.2116, 3.7604**.

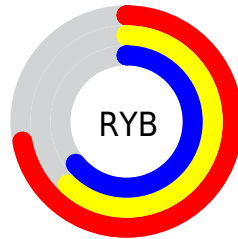
Distribution



Red (72%)

Green (62%)

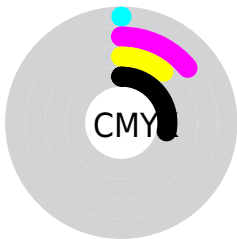
Blue (64%)



Red (72%)

Yellow (62%)

Blue (64%)

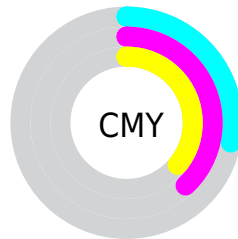


Cyan (0%)

Magenta (14%)

Yellow (11%)

Black (28%)



Cyan (28%)

Magenta (38%)

Yellow (36%)

Brightness & Saturation Gradients

These gradients show how the HunterLab color 60.9634, 5.6497, 3.9650 changes by changing the brightness by 10 percent. The first figure shows a shift by +10% for each color and the second figure -10%.

Similar to the brightness gradients but the following saturation gradients show a change of the HunterLab color 60.9634, 5.6497, 3.9650 by changing the saturation by 10% instead.

60.9634, 5.6497,
3.9650

60.9634, 5.6497,
3.9650

182.7657, 2.8938,
10.8848

50.3357, 5.6963,
3.3470

84.1603, 5.3664,
5.3029

40.4081, 5.6731,
2.7631

96.6596, 5.1443,
6.0176

31.2357, 5.5678,
2.2168

109.7228, 4.8736,
6.7616

22.8865, 5.3659,
1.7105

123.3267, 4.5578,
7.5337

15.4516, 5.0460,
1.2475

137.4505, 4.1997,
8.3329

9.0524, 4.6109,
0.8559

152.0758, 3.8016,

0.0000, NaN, NaN

9.1583

0.0000, NaN, NaN

167.1859, 3.3657,
10.0092

0.0000, NaN, NaN

■ 60.9634, 5.6497,
3.9650

■ 60.9634, 5.6497,
3.9650

■ 55.5759, 12.7067,
4.4194

■ 66.6616, -1.2116,
3.7604

■ 50.5509, 19.9356,
5.1659

■ 72.6217, -7.8744,
3.7616

■ 45.9591, 27.2470,
6.2509

■ 78.8095, -14.3577,
3.9353

■ 41.8830, 34.4554,
7.7076

■ 85.1967, -20.6845,
4.2532

■ 38.4156, 41.2371,
9.5361

■ 91.7604, -26.8783,
4.6924

■ 35.6484, 47.1191,
11.6752

■ 94.0974, -26.8023,
0.0834

■ 33.6492, 51.5560,
13.9799

■ 94.2377, -26.0018,
-1.9092

■ 32.4300, 54.1338,
16.2305

■ 31.9348, 55.0995,
17.4567

Harmonies

Analogous

The Analogous color harmony consists of three colors that are next to each other on the color wheel.



60.9648, 4.7858, -0.3448



60.9634, 5.6497, 3.9650



60.9648, 4.0678, 7.8182

Triad

The Triadic color harmony groups three colors that are evenly spaced from another and form a triangle on the color wheel.



60.9648, 5.6479, 3.9660



60.9648, -8.1014, 9.7422



60.9648, -6.9486, -4.6228

Complementary

The Complementary color scheme is a pair of colors which are on the opposite of each other on the color wheel.



60.9634, 5.6497, 3.9650



66.5968, -11.8212, 3.3296

Split Complementary

Split-complementary colors differ from the complementary color scheme. The scheme consists of three colors, the original color and two neighbors of the complement color.



60.9648, -10.2500, -1.5527



60.9634, 5.6497, 3.9650



60.9648, -10.9018, 6.7677

Square

The Square scheme is like the rectangle color scheme, but the four colors are evenly spaced on the color wheel.



60.9648, 5.6479, 3.9660



60.9648, -3.9392, 10.9952



60.9648, -11.6769, 2.6637



60.9648, -2.5702, -5.5079

Rectangle

The Rectangle color scheme consists of four colors that form a rectangle on the color wheel.



60.9634, 5.6497, 3.9650



60.9648, 1.8685, 9.6716



60.9648, -11.6769, 2.6637



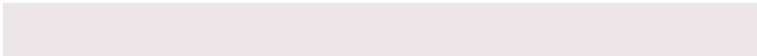
60.9648, -8.2170, -3.8017

Sweetspot

The Sweet Spot groups the original color and five complimentary colors.



60.9648, 5.6479, 3.9660



88.8937, -1.2532, 5.0379



61.1059, 7.3853, -5.6864



41.5017, -0.2680, 2.3729



96.5975, -5.1542, 5.2483



43.2801, -2.3093, 2.3515

Same Dimension

The Same Dimension uses a secret algorithm to generate beautiful new colors.



60.9648, 5.6479, 3.9660



79.6661, 9.9944, 5.4314



62.9511, 1.1210, 8.3414



30.0679, 1.2617, 1.8258



26.6881, 46.0767, 14.3573



5.0977, 8.9711, 1.4255

Inverse Universe

The Inverse Universe completely reimagines the original color for something new.



60.9648, 5.6479, 3.9660



79.6661, 9.9944, 5.4314



64.4548, -7.3471, -1.6222



30.0679, 1.2617, 1.8258



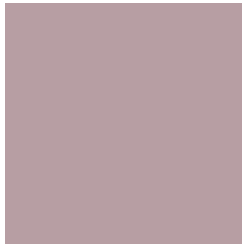
26.6881, 46.0767, 14.3573



5.0977, 8.9711, 1.4255

Previews

White Background



This preview shows how the HunterLab color 60.9634, 5.6497, 3.9650 looks on a white background.

Color Contrast Check

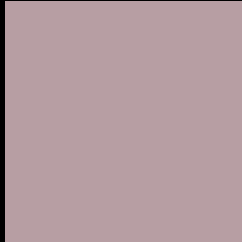
Large Text (above 18pt) WCAG AA × Fail

Any Text WCAG AA × Fail

Large Text (above 18pt) WCAG AAA × Fail

Any Text WCAG AAA × Fail

Black Background



This preview shows how the HunterLab color 60.9634, 5.6497, 3.9650 looks on a black background.

Color Contrast Check

Large Text (above 18pt) WCAG AA ✓ Pass

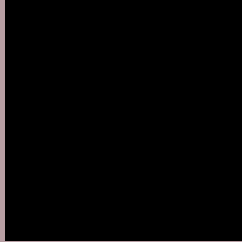
Any Text WCAG AA ✓ Pass

Large Text (above 18pt) WCAG AAA ✓ Pass

Any Text WCAG AAA ✓ Pass

If you want to check with other color combinations, try the [Color Contrast Checker](#).

HunterLab 60.9634, 5.6497, 3.9650 Background



This preview shows how black text looks on a background with the HunterLab color 60.9634, 5.6497, 3.9650.



This preview shows how white text looks on a background with the HunterLab color 60.9634, 5.6497,

3.9650.

Color Blindness Simulation

Color vision deficiency is a very complex topic, and I could not describe the different causes any better than Wikipedia does, so if you want to learn more, you should check out their [article about color blindness](#).

Dichromacy



Original Color

60.9634, 5.6497, 3.9650

Protanopia

60.9615, -1.5164, 2.4504

Deuteranopia

61.0446, 4.4778, 4.0394



Tritanopia

60.9663, 7.4529, 1.1935

Trichromacy



Original Color

60.9634, 5.6497, 3.9650

Protanomaly

60.9020, 1.1919, 2.8933

Deuteranomaly

61.1438, 4.8104, 4.1610

Tritanomaly

60.9051, 7.1283, 2.0645

Monochromacy



Original Color

60.9634, 5.6497, 3.9650

Achromatopsia

61.7516, -3.2949, 3.3551

Achromatomaly

61.3854, -0.1187, 3.4411

CSS Examples

Text

The CSS property to change the color of the text to HunterLab 60.9634, 5.6497, 3.9650 is called "color". The color property can be set on classes, ids or directly on the HTML element.

This example shows how text in the color `rgb(183, 158, 163)` looks like.

```
.text, #text, p{  
    color:rgb(183, 158, 163)  
}
```

If you want to add a text shadow in that color use the text-shadow property, you can generate a text shadow directly with our [CSS Text Shadow Generator](#).

Here you see how black text with a 4 pixel rgb(183, 158, 163) colored shadow looks like.

```
.shadow{ text-shadow: 4px 4px 2px rgb(183, 158, 163) }
```

Border

The CSS property to change the border of an element to HunterLab 60.9634, 5.6497, 3.9650 is called "border".

The border property can be set on classes, ids or directly on the HTML element.

This example shows the color as border, it can be applied via the CSS property "border" or "border-color".

```
.border, #border, table{ border:4px solid rgb(183, 158, 163) }
```


If only the border color should be changed use the property `border-color`.

```
.border{ border-color:rgb(183, 158, 163) }
```

If you want to add a box shadow in that color use:

Here you see how a box with a 4 pixel `rgb(183, 158, 163)` colored shadow looks like.

```
.boxshadow{ -moz-box-shadow:4px 4px 4px  
4px rgb(183, 158, 163); -webkit-box-  
shadow:4px 4px 4px 4px rgb(183, 158, 163);  
box-shadow:4px 4px 4px 4px rgb(183, 158,  
163) }
```

Background

The CSS property to change the background color of an element to HunterLab 60.9634, 5.6497, 3.9650 is called "background". The background property can be set on classes, ids or directly on the HTML element.

```
.background, #background, body{  
background: rgb(183, 158, 163) }
```

If only the background color should be changed can be used:

```
.background{ background-color: rgb(183,  
158, 163) }
```

This example shows the color as background, it is applied via the CSS property "background".

To optimize and compress your CSS code, you can use our [online CSS compressor and optimizer](#) based on csstidy. If you want to create a linear or radial gradient as background or border, check our [CSS Gradient Generator](#).

Hey! You found this booklet interesting? Support Converting Colors with the new Membership Option!

The pro membership hides all ads, plus gives you double the colors in the color bucket, and more awesome pro features!

[Learn more, Memberships starting at \\$2.50/m!](#)

**Follow me
on Twitter!**

@ConvertingColor