

Converting Colors

HunterLab(60.9811, 10.5792,
7.5031)

Have a look what the booklet for
HunterLab(60.9811, 10.5792,
7.5031) contains.

HunterLab(60.8932, 10.6258, 7.5143)	3
<i>Conversions</i>	4
<i>Details</i>	6
<i>Harmonies</i>	12
<i>Previews</i>	24
<i>Color Blindness Simulation</i>	28
<i>CSS Examples</i>	31

Color

**HunterLab(60.8932, 10.6258,
7.5143)**

Conversions

Conversions Part 1

Format	Color
Hex	C39A9B
RGB	195, 154, 155
RGB Percent	76%, 60%, 61%
CMY	0.2353, 0.3961, 0.3922
CMYK	0.00, 0.21, 0.21, 0.24
HSL	359°, 25%, 68%
HSV	359°, 21%, 76%
XYZ	39.9776, 37.0798, 36.0603
YIQ	166.3730, 24.1150, 9.0030

Conversions

Conversions Part 2

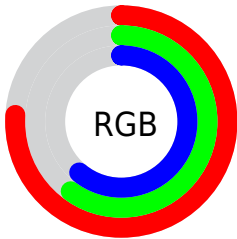
Format	Color
RYB	195, 154, 155
Decimal	12819099
CIELab	67.34, 15.41, 5.31
CIElCh	67, 16.301, 19.017
Yxy	37.0815, 0.3534, 0.3278
Android (android.graphics.Color)	4291009179 (0xFFC39A9B)
YUV	166.3730, -5.6069, 25.1059
Hunter-Lab	60.8932, 10.6258, 7.5143

Details

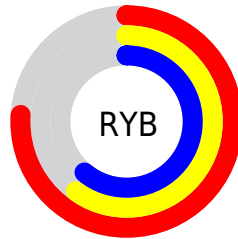
The HunterLab color **60.8932, 10.6258, 7.5143** is a light color, and the websafe version is hex **CC9999**. A complement of this color would be **70.5664, -15.7821, 0.3213**, and the grayscale version is **61.9216, -3.3040, 3.3643**.

A 20% lighter version of the original color is **84.2020, 10.4815, 9.5936**, and **40.4508, 10.1122, 5.9064** is the 20% darker color. If you saturate the color by 10%, you get **55.2893, 17.9932, 9.4161**, and if you desaturate by 10%, it is **66.8882, 3.5384, 5.7703**.

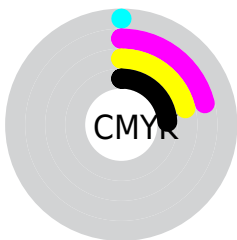
Distribution



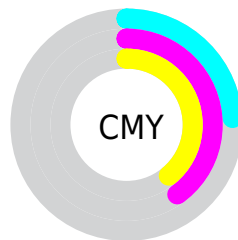
- Red (76%)
- Green (60%)
- Blue (61%)



- Red (76%)
- Yellow (60%)
- Blue (61%)



- Cyan (0%)
- Magenta (21%)
- Yellow (21%)
- Black (24%)



- Cyan (24%)
- Magenta (40%)
- Yellow (39%)

Brightness & Saturation Gradients

These gradients show how the HunterLab color 60.8932, 10.6258, 7.5143 changes by changing the brightness by 10 percent. The first figure shows a shift by +10% for each color and the second figure -10%.

Similar to the brightness gradients but the following saturation gradients show a change of the HunterLab color 60.8932, 10.6258, 7.5143 by changing the saturation by 10% instead.

60.8932, 10.6258,
7.5143

60.8932, 10.6258,
7.5143

182.6645, 9.8196,
16.1196

50.2699, 10.4072,
6.6568

84.0822, 10.8347,
9.2884

40.3470, 10.1043,
5.8152

96.5778, 10.8433,
10.2044

31.1795, 9.7019,
4.9875

109.6375, 10.7945,
11.1404

22.8359, 9.1824,
4.1688

123.2380, 10.6927,
12.0965

15.4072, 8.5217,
3.3492

137.3585, 10.5414,
13.0726

9.0132, 7.7362,
2.9335

151.9807, 10.3437,

0.0000, INF, NaN

14.0686

0.0000, NaN, NaN

167.0877, 10.1023,
15.0844

0.0000, NaN, NaN

■ 60.8932, 10.6258,
7.5143

■ 60.8932, 10.6258,
7.5143

■ 55.2893, 17.9932,
9.4161

■ 66.8882, 3.5384,
5.7703

■ 50.1476, 25.5934,
11.4697

■ 73.2099, -3.2611,
4.1699

■ 45.5611, 33.2756,
13.6449

■ 79.8119, -9.7982,
2.6976

■ 41.6349, 40.7431,
15.8629

■ 86.6566, -16.1054,
1.3358

■ 38.4767, 47.5166,
17.9813

■ 93.7138, -22.2166,
0.0682

■ 36.1726, 52.9836,
19.8018

■ 95.0485, -23.0147,
-0.8495

■ 34.7507, 56.5944,
21.1246

■ 34.0772, 58.3887,
21.7836

Harmonies

Analogous

The Analogous color harmony consists of three colors that are next to each other on the color wheel.



60.8946, 11.1793, 0.7102



60.8932, 10.6258, 7.5143



60.8946, 6.2491, 12.5748

Triad

The Triadic color harmony groups three colors that are evenly spaced from another and form a triangle on the color wheel.



60.8946, 10.6237, 7.5153



60.8946, -13.5107, 11.4528



60.8946, -5.9089, -11.3372

Complementary

The Complementary color scheme is a pair of colors which are on the opposite of each other on the color wheel.



60.8932, 10.6258, 7.5143



70.5664, -15.7821, 0.3213

Split Complementary

Split-complementary colors differ from the complementary color scheme. The scheme consists of three colors, the original color and two neighbors of the complement color.



60.8946, -12.2050, -7.6756



60.8932, 10.6258, 7.5143



60.8946, -16.4540, 5.8090

Square

The Square scheme is like the rectangle color scheme, but the four colors are evenly spaced on the color wheel.



60.8946, 10.6237, 7.5153



60.8946, -7.7682, 14.6559



60.8946, -15.9875, -1.2084



60.8946, 1.3989, -10.7401

Rectangle

The Rectangle color scheme consists of four colors that form a rectangle on the color wheel.



60.8932, 10.6258, 7.5143



60.8946, 1.8663, 14.5306



60.8946, -15.9875, -1.2084



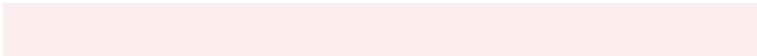
60.8946, -8.2076, -10.5479

Sweetspot

The Sweet Spot groups the original color and five complimentary colors.



60.8946, 10.6237, 7.5153



93.6361, 0.2026, 6.6435



62.0273, 16.8107, -10.8363



43.5547, 0.3792, 3.1759

0.0000, NaN, NaN



46.2646, -2.4686, 2.5136

Same Dimension

The Same Dimension uses a secret algorithm to generate beautiful new colors.



60.8946, 10.6237, 7.5153



78.1512, 18.4771, 11.1418



66.2380, 0.7926, 13.4626



31.7518, 1.1177, 2.5691



27.4760, 47.0846, 17.5130



5.7235, 9.8324, 3.4593

Inverse Universe

The Inverse Universe completely reimagines the original color for something new.



60.8946, 10.6237, 7.5153



78.1512, 18.4771, 11.1418



64.6607, -6.3847, -7.6099



31.7518, 1.1177, 2.5691



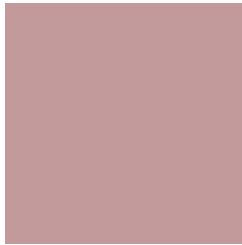
27.4760, 47.0846, 17.5130



5.7235, 9.8324, 3.4593

Previews

White Background



This preview shows how the HunterLab color 60.8932, 10.6258, 7.5143 looks on a white background.

Color Contrast Check

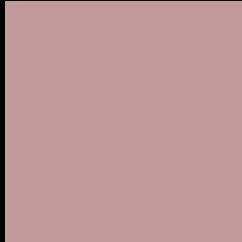
Large Text (above 18pt) WCAG AA × Fail

Any Text WCAG AA × Fail

Large Text (above 18pt) WCAG AAA × Fail

Any Text WCAG AAA × Fail

Black Background



This preview shows how the HunterLab color 60.8932, 10.6258, 7.5143 looks on a black background.

Color Contrast Check

Large Text (above 18pt) WCAG AA ✓ Pass

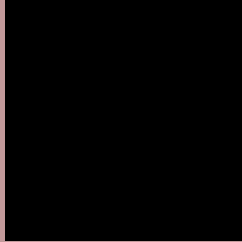
Any Text WCAG AA ✓ Pass

Large Text (above 18pt) WCAG AAA ✓ Pass

Any Text WCAG AAA ✓ Pass

If you want to check with other color combinations, try the [Color Contrast Checker](#).

HunterLab 60.8932, 10.6258, 7.5143 Background



This preview shows how black text looks on a background with the HunterLab color 60.8932, 10.6258, 7.5143.



This preview shows how white text looks on a background with the HunterLab color 60.8932, 10.6258,

Color Blindness Simulation

Color vision deficiency is a very complex topic, and I could not describe the different causes any better than Wikipedia does, so if you want to learn more, you should check out their [article about color blindness](#).

Dichromacy



Original Color

60.8932, 10.6258, 7.5143

Protanopia

60.8747, -2.1695, 5.0808

Deuteranopia

61.0899, 4.1201, 8.0443



Tritanopia

60.9906, 12.8418, 3.6643

Trichromacy



Original Color

60.8932, 10.6258, 7.5143

Protanomaly

60.8894, 2.2110, 6.0604

Deuteranomaly

60.9413, 6.4982, 7.9220

Tritanomaly

60.9027, 12.3832, 4.9194

Monochromacy



Original Color

60.8932, 10.6258, 7.5143

Achromatopsia

61.7516, -3.2949, 3.3551

Achromatomaly

61.4788, 1.5042, 4.9438

CSS Examples

Text

The CSS property to change the color of the text to HunterLab 60.8932, 10.6258, 7.5143 is called "color". The color property can be set on classes, ids or directly on the HTML element.

This example shows how text in the color `rgb(195, 154, 155)` looks like.

```
.text, #text, p{  
    color:rgb(195, 154, 155)  
}
```

If you want to add a text shadow in that color use the text-shadow property, you can generate a text shadow directly with our [CSS Text Shadow Generator](#).

Here you see how black text with a 4 pixel rgb(195, 154, 155) colored shadow looks like.

```
.shadow{ text-shadow: 4px 4px 2px rgb(195, 154, 155) }
```

Border

The CSS property to change the border of an element to HunterLab 60.8932, 10.6258, 7.5143 is called "border". The border property can be set on classes, ids or directly on the HTML element.

This example shows the color as border, it can be applied via the CSS property "border" or "border-color".

```
.border, #border, table{ border:4px solid rgb(195, 154, 155) }
```


If only the border color should be changed use the property `border-color`.

```
.border{ border-color:rgb(195, 154, 155) }
```

If you want to add a box shadow in that color use:

Here you see how a box with a 4 pixel `rgb(195, 154, 155)` colored shadow looks like.

```
.boxshadow{ -moz-box-shadow:4px 4px 4px  
4px rgb(195, 154, 155); -webkit-box-  
shadow:4px 4px 4px 4px rgb(195, 154, 155);  
box-shadow:4px 4px 4px 4px rgb(195, 154,  
155) }
```

Background

The CSS property to change the background color of an element to HunterLab 60.8932, 10.6258, 7.5143 is called "background". The background property can be set on classes, ids or directly on the HTML element.

```
.background, #background, body{  
background: rgb(195, 154, 155) }
```

If only the background color should be changed can be used:

```
.background{ background-color: rgb(195,  
154, 155) }
```

This example shows the color as background, it is applied via the CSS property "background".

To optimize and compress your CSS code, you can use our [online CSS compressor and optimizer](#) based on csstidy. If you want to create a linear or radial gradient as background or border, check our [CSS Gradient Generator](#).

Hey! You found this booklet interesting? Support Converting Colors with the new Membership Option!

The pro membership hides all ads, plus gives you double the colors in the color bucket, and more awesome pro features!

[Learn more, Memberships starting at \\$2.50/m!](#)

**Follow me
on Twitter!**

@ConvertingColor