

Converting Colors

HunterLab(61.1688, 46.2085,
6.2647)

Have a look what the booklet for
HunterLab(61.1688, 46.2085,
6.2647) contains.

HunterLab(61.1688, 46.2085, 6.2647)	3
<i>Conversions</i>	4
<i>Details</i>	6
<i>Harmonies</i>	12
<i>Previews</i>	24
<i>Color Blindness Simulation</i>	28
<i>CSS Examples</i>	31

Color

**HunterLab(61.1688, 46.2085,
6.2647)**

Conversions

Conversions Part 1

Format	Color
Hex	F87EA0
RGB	248, 126, 160
RGB Percent	97%, 49%, 63%
CMY	0.0275, 0.5059, 0.3725
CMYK	0.00, 0.49, 0.35, 0.03
HSL	343°, 90%, 73%
HSV	343°, 49%, 97%
XYZ	52.5174, 37.4162, 37.7118
YIQ	166.3540, 61.7980, 36.4380

Conversions

Conversions Part 2

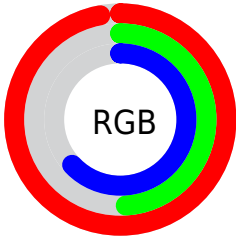
Format	Color
R _Y B	248, 126, 160
Decimal	16285344
CIE Lab	67.59, 49.99, 3.66
CIE LCh	68, 50.128, 4.192
Yxy	37.4181, 0.4114, 0.2931
Android (android.graphics.Color)	4294475424 (0xFFFF87EA0)
YUV	166.3540, -3.1325, 71.6035
Hunter-Lab	61.1688, 46.2085, 6.2647

Details

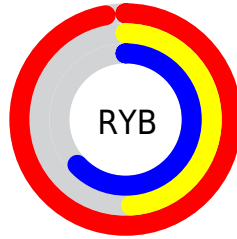
The HunterLab color **61.1688, 46.2085, 6.2647** is a light color, and the websafe version is hex **FF6699**. A complement of this color would be **87.4222, -42.0956, 9.9831**, and the grayscale version is **61.8934, -3.3025, 3.3628**.

A 20% lighter version of the original color is **76.9507, 27.7818, -1.6320**, and **40.5342, 42.7539, 4.5629** is the 20% darker color. If you saturate the color by 10%, you get **55.9111, 56.2805, 8.2531**, and if you desaturate by 10%, it is **67.2589, 35.6190, 4.9900**.

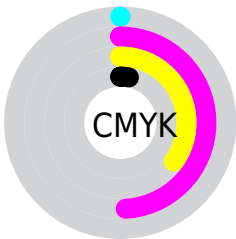
Distribution



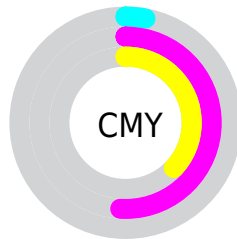
- Red (97%)
- Green (49%)
- Blue (63%)



- Red (97%)
- Yellow (49%)
- Blue (63%)



- Cyan (0%)
- Magenta (49%)
- Yellow (35%)
- Black (3%)



- Cyan (3%)
- Magenta (51%)
- Yellow (37%)

Brightness & Saturation Gradients

These gradients show how the HunterLab color 61.1688, 46.2085, 6.2647 changes by changing the brightness by 10 percent. The first figure shows a shift by +10% for each color and the second figure -10%.

Similar to the brightness gradients but the following saturation gradients show a change of the HunterLab color 61.1688, 46.2085, 6.2647 by changing the saturation by 10% instead.

61.1688, 46.2085,
6.2647

61.1688, 46.2085,
6.2647

183.0621, 56.7298,
14.2526

50.5286, 44.5596,
5.4959

84.3892, 49.1701,
7.8786

40.5874, 42.8022,
4.7498

96.8993, 50.5013,
8.7207

31.4003, 40.9396,
4.0267

109.9729, 51.7397,
9.5863

23.0349, 39.0032,
3.3248

123.5867, 52.8913,
10.4750

15.5819, 37.0974,
2.6394

137.7201, 53.9615,
11.3864

9.1663, 35.6237,
2.1561

152.3546, 54.9551,

0.0000, INF, NaN

12.3201

0.0000, NaN, NaN

167.4736, 55.8765,
13.2756

0.0000, NaN, NaN

■ 61.1688, 46.2085,
6.2647

■ 61.1688, 46.2085,
6.2647

■ 55.9111, 56.2805,
8.2531

■ 67.2589, 35.6190,
4.9900

■ 51.6164, 65.2081,
10.9590

■ 74.0465, 24.9378,
4.3520

■ 48.3995, 72.1939,
14.2722

■ 81.4199, 14.3889,
4.2568

■ 46.3071, 76.5382,
17.9295

■ 89.2861, 4.0754,
4.6113

■ 45.2209, 78.1878,
21.5159

■ 97.5703, -5.9730,
5.3346

■ 45.1525, 78.2795,
21.7774

■ 99.3461, -7.6179,
4.6211

Harmonies

Analogous

The Analogous color harmony consists of three colors that are next to each other on the color wheel.



61.1703, 40.8171, -17.4628



61.1688, 46.2085, 6.2647



61.1703, 36.8437, 22.2548

Triad

The Triadic color harmony groups three colors that are evenly spaced from another and form a triangle on the color wheel.



61.1703, 46.2049, 6.2660



61.1703, -25.7561, 28.5477



61.1703, -21.0059, -46.5943

Complementary

The Complementary color scheme is a pair of colors which are on the opposite of each other on the color wheel.



61.1688, 46.2085, 6.2647



87.4222, -42.0956, 9.9831

Split Complementary

Split-complementary colors differ from the complementary color scheme. The scheme consists of three colors, the original color and two neighbors of the complement color.



61.1703, -35.1315, -24.6480



61.1688, 46.2085, 6.2647



61.1703, -37.5828, 18.6894

Square

The Square scheme is like the rectangle color scheme, but the four colors are evenly spaced on the color wheel.



61.1703, 46.2049, 6.2660



61.1703, -6.4017, 31.8179



61.1703, -40.7506, 0.2401



61.1703, -0.0682, -53.6697

Rectangle

The Rectangle color scheme consists of four colors that form a rectangle on the color wheel.



61.1688, 46.2085, 6.2647



61.1703, 24.1947, 28.2070



61.1703, -40.7506, 0.2401



61.1703, -26.6032, -40.4001

Sweetspot

The Sweet Spot groups the original color and five complimentary colors.



61.1703, 46.2049, 6.2660



87.3645, 10.3815, 4.4949



59.9268, 49.9340, -50.0625



39.6342, 5.8477, 2.0513

0.0000, NaN, NaN



46.2646, -2.4686, 2.5136

Same Dimension

The Same Dimension uses a secret algorithm to generate beautiful new colors.



61.1703, 46.2049, 6.2660



57.7597, 57.9863, 8.4932



66.3794, 28.4481, 23.7680



41.5989, 2.0509, 2.1466



33.2170, 57.6474, 15.5551



10.1936, 17.8555, 3.4966

Inverse Universe

The Inverse Universe completely reimagines the original color for something new.



61.1703, 46.2049, 6.2660



57.7597, 57.9863, 8.4932



79.5154, -23.4182, -17.6311



41.5989, 2.0509, 2.1466



33.2170, 57.6474, 15.5551



10.1936, 17.8555, 3.4966

Previews

White Background



This preview shows how the HunterLab color 61.1688, 46.2085, 6.2647 looks on a white background.

Color Contrast Check

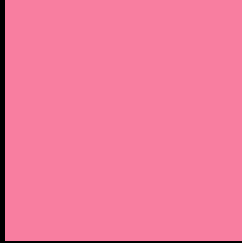
Large Text (above 18pt) WCAG AA × Fail

Any Text WCAG AA × Fail

Large Text (above 18pt) WCAG AAA × Fail

Any Text WCAG AAA × Fail

Black Background



This preview shows how the HunterLab color 61.1688, 46.2085, 6.2647 looks on a black background.

Color Contrast Check

Large Text (above 18pt) WCAG AA ✓ Pass

Any Text WCAG AA ✓ Pass

Large Text (above 18pt) WCAG AAA ✓ Pass

Any Text WCAG AAA ✓ Pass

If you want to check with other color combinations, try the [Color Contrast Checker](#).

HunterLab 61.1688, 46.2085, 6.2647 Background



This preview shows how black text looks on a background with the HunterLab color 61.1688, 46.2085, 6.2647.



This preview shows how white text looks on a background with the HunterLab color 61.1688, 46.2085,

6.2647.

Color Blindness Simulation

Color vision deficiency is a very complex topic, and I could not describe the different causes any better than Wikipedia does, so if you want to learn more, you should check out their [article about color blindness](#).

Dichromacy



Original Color

61.1688, 46.2085, 6.2647

Protanopia

61.4124, -0.4422, -4.8922

Deuteranopia

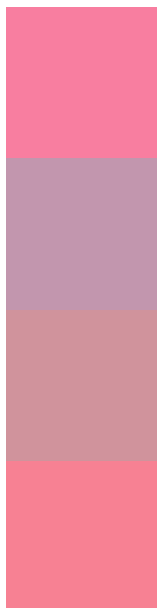
61.1912, 4.4602, 8.1619



Tritanopia

61.1737, 40.7355, 14.7341

Trichromacy



Original Color

61.1688, 46.2085, 6.2647

Protanomaly

60.2810, 15.3059, -1.9732

Deuteranomaly

60.5621, 19.1239, 6.8610

Tritanomaly

61.3036, 42.5991, 11.8236

Monochromacy



Original Color

61.1688, 46.2085, 6.2647

Achromatopsia

61.7516, -3.2949, 3.3551

Achromatomaly

60.4560, 13.8762, 3.0511

CSS Examples

Text

The CSS property to change the color of the text to HunterLab 61.1688, 46.2085, 6.2647 is called "color". The color property can be set on classes, ids or directly on the HTML element.

This example shows how text in the color `rgb(248, 126, 160)` looks like.

```
.text, #text, p{  
    color:rgb(248, 126, 160)  
}
```

If you want to add a text shadow in that color use the text-shadow property, you can generate a text shadow directly with our [CSS Text Shadow Generator](#).

Here you see how black text with a 4 pixel rgb(248, 126, 160) colored shadow looks like.

```
.shadow{ text-shadow: 4px 4px 2px rgb(248, 126, 160) }
```

Border

The CSS property to change the border of an element to HunterLab 61.1688, 46.2085, 6.2647 is called "border". The border property can be set on classes, ids or directly on the HTML element.

This example shows the color as border, it can be applied via the CSS property "border" or "border-color".

```
.border, #border, table{ border:4px solid rgb(248, 126, 160) }
```


If only the border color should be changed use the property `border-color`.

```
.border{ border-color:rgb(248, 126, 160) }
```

If you want to add a box shadow in that color use:

Here you see how a box with a 4 pixel `rgb(248, 126, 160)` colored shadow looks like.

```
.boxshadow{ -moz-box-shadow:4px 4px 4px  
4px rgb(248, 126, 160); -webkit-box-  
shadow:4px 4px 4px 4px rgb(248, 126, 160);  
box-shadow:4px 4px 4px 4px rgb(248, 126,  
160) }
```

Background

The CSS property to change the background color of an element to HunterLab 61.1688, 46.2085, 6.2647 is called "background". The background property can be set on classes, ids or directly on the HTML element.

```
.background, #background, body{  
background: rgb(248, 126, 160) }
```

If only the background color should be changed can be used:

```
.background{ background-color: rgb(248,  
126, 160) }
```

This example shows the color as background, it is applied via the CSS property "background".

To optimize and compress your CSS code, you can use our [online CSS compressor and optimizer](#) based on csstidy. If you want to create a linear or radial gradient as background or border, check our [CSS Gradient Generator](#).

Hey! You found this booklet interesting? Support Converting Colors with the new Membership Option!

The pro membership hides all ads, plus gives you double the colors in the color bucket, and more awesome pro features!

[Learn more, Memberships starting at \\$2.50/m!](#)

**Follow me
on Twitter!**

@ConvertingColor