

Converting Colors

HunterLab(61.1737, 40.7355,
14.7341)

Have a look what the booklet for
HunterLab(61.1737, 40.7355,
14.7341) contains.

HunterLab(61.1737, 40.7355, 14.7341)	3
<i>Conversions</i>	4
<i>Details</i>	6
<i>Harmonies</i>	12
<i>Previews</i>	24
<i>Color Blindness Simulation</i>	28
<i>CSS Examples</i>	31

Color

**HunterLab(61.1737, 40.7355,
14.7341)**

Conversions

Conversions Part 1

Format	Color
Hex	F6828B
RGB	246, 130, 139
RGB Percent	96%, 51%, 55%
CMY	0.0353, 0.4902, 0.4549
CMYK	0.00, 0.47, 0.43, 0.04
HSL	355°, 87%, 74%
HSV	355°, 47%, 96%
XYZ	50.6489, 37.4222, 28.9799
YIQ	165.7100, 66.2470, 27.3910

Conversions

Conversions Part 2

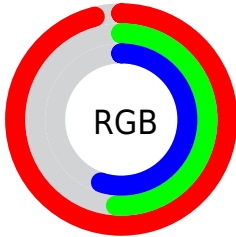
Format	Color
R _Y B	246, 130, 139
Decimal	16155275
CIE Lab	67.59, 45.05, 15.48
CIE LCh	68, 47.634, 18.960
Yxy	37.4241, 0.4327, 0.3197
Android (android.graphics.Color)	4294345355 (0xFFFF6828B)
YUV	165.7100, -13.1680, 70.4143
Hunter-Lab	61.1737, 40.7355, 14.7341

Details

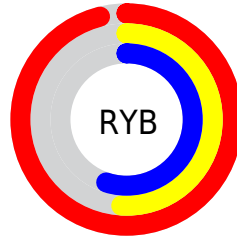
The HunterLab color **61.1737, 40.7355, 14.7341** is a light color, and the websafe version is hex **FF9999**. A complement of this color would be **87.6200, -36.2980, -0.8631**, and the grayscale version is **61.6670, -3.2904, 3.3505**.

A 20% lighter version of the original color is **77.3070, 21.9619, 9.7739**, and **40.5809, 37.6589, 11.8566** is the 20% darker color. If you saturate the color by 10%, you get **55.7201, 50.7148, 17.5404**, and if you desaturate by 10%, it is **67.4557, 30.5526, 12.1816**.

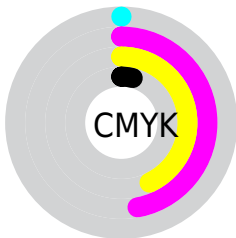
Distribution



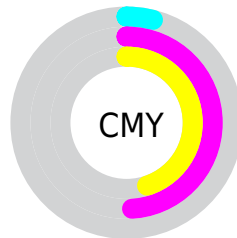
- Red (96%)
- Green (51%)
- Blue (55%)



- Red (96%)
- Yellow (51%)
- Blue (55%)



- Cyan (0%)
- Magenta (47%)
- Yellow (43%)
- Black (4%)



- Cyan (4%)
- Magenta (49%)
- Yellow (45%)

Brightness & Saturation Gradients

These gradients show how the HunterLab color 61.1737, 40.7355, 14.7341 changes by changing the brightness by 10 percent. The first figure shows a shift by +10% for each color and the second figure -10%.

Similar to the brightness gradients but the following saturation gradients show a change of the HunterLab color 61.1737, 40.7355, 14.7341 by changing the saturation by 10% instead.

61.1737, 40.7355,
14.7341

61.1737, 40.7355,
14.7341

183.0692, 49.7664,
27.3672

50.5332, 39.2604,
13.2912

84.3947, 43.3482,
17.5650

40.5917, 37.6723,
11.8136

96.9050, 44.5077,
18.9645

31.4042, 35.9671,
10.2854

109.9789, 45.5770,
20.3600

23.0385, 34.1606,
8.6796

123.5929, 46.5624,
21.7546

15.5850, 32.3201,
6.9505

137.7265, 47.4694,
23.1508

9.1690, 30.7342,
6.4183

152.3612, 48.3029,

0.0000, INF, NaN

24.5507

0.0000, NaN, NaN

167.4805, 49.0672,
25.9557

0.0000, NaN, NaN

■ 61.1737, 40.7355,
14.7341

■ 61.1737, 40.7355,
14.7341

■ 55.7201, 50.7148,
17.5404

■ 67.4557, 30.5526,
12.1816

■ 51.2351, 59.9296,
20.4698

■ 74.4265, 20.5130,
9.9262

■ 47.8490, 67.5919,
23.2970

■ 81.9731, 10.7721,
7.9668

■ 45.6291, 72.9130,
25.7269

■ 90.0024, 1.3812,
6.2773

■ 44.5168, 75.5211,
27.4873

■ 98.4407, -7.6660,
4.8237

■ 44.3171, 76.0011,
27.8098

■ 99.1629, -8.2600,
4.3927

Harmonies

Analogous

The Analogous color harmony consists of three colors that are next to each other on the color wheel.



61.1753, 42.6022, -4.6526



61.1737, 40.7355, 14.7341



61.1753, 26.1728, 26.1136

Triad

The Triadic color harmony groups three colors that are evenly spaced from another and form a triangle on the color wheel.



61.1753, 40.7318, 14.7352



61.1753, -31.3217, 23.8641



61.1753, -10.9517, -48.9170

Complementary

The Complementary color scheme is a pair of colors which are on the opposite of each other on the color wheel.



61.1737, 40.7355, 14.7341



87.6200, -36.2980, -0.8631

Split Complementary

Split-complementary colors differ from the complementary color scheme. The scheme consists of three colors, the original color and two neighbors of the complement color.



61.1753, -28.0159, -34.1784



61.1737, 40.7355, 14.7341



61.1753, -38.6529, 10.3635

Square

The Square scheme is like the rectangle color scheme, but the four colors are evenly spaced on the color wheel.



61.1753, 40.7318, 14.7352



61.1753, -16.0755, 29.9932



61.1753, -37.5323, -10.8078



61.1753, 10.6896, -46.4834

Rectangle

The Rectangle color scheme consists of four colors that form a rectangle on the color wheel.



61.1737, 40.7355, 14.7341



61.1753, 12.2229, 29.7621



61.1753, -37.5323, -10.8078



61.1753, -17.3550, -45.6487

Sweetspot

The Sweet Spot groups the original color and five complimentary colors.



61.1753, 40.7318, 14.7352



87.9530, 8.1247, 7.7203



63.6483, 54.9800, -41.0361



39.8682, 4.7481, 3.7556

0.0000, NaN, NaN



46.2646, -2.4686, 2.5136

Same Dimension

The Same Dimension uses a secret algorithm to generate beautiful new colors.



61.1753, 40.7318, 14.7352



58.0646, 52.7852, 18.2586



72.9246, 14.4077, 28.0154



40.6243, 1.6323, 3.0663



32.3895, 55.5696, 20.1420



9.6391, 16.6106, 5.4271

Inverse Universe

The Inverse Universe completely reimagines the original color for something new.



61.1753, 40.7318, 14.7352



58.0646, 52.7852, 18.2586



71.8593, -11.5874, -27.8616



40.6243, 1.6323, 3.0663



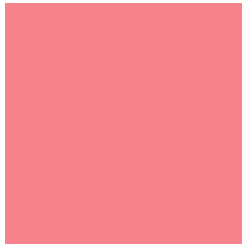
32.3895, 55.5696, 20.1420



9.6391, 16.6106, 5.4271

Previews

White Background



This preview shows how the HunterLab color 61.1737, 40.7355, 14.7341 looks on a white background.

Color Contrast Check

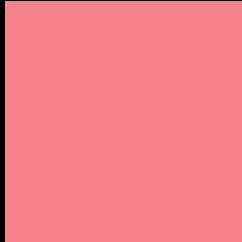
Large Text (above 18pt) WCAG AA × Fail

Any Text WCAG AA × Fail

Large Text (above 18pt) WCAG AAA × Fail

Any Text WCAG AAA × Fail

Black Background



This preview shows how the HunterLab color 61.1737, 40.7355, 14.7341 looks on a black background.

Color Contrast Check

Large Text (above 18pt) WCAG AA ✓ Pass

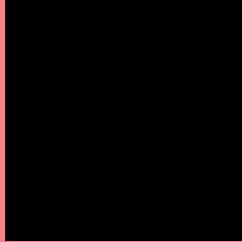
Any Text WCAG AA ✓ Pass

Large Text (above 18pt) WCAG AAA ✓ Pass

Any Text WCAG AAA ✓ Pass

If you want to check with other color combinations, try the [Color Contrast Checker](#).

HunterLab 61.1737, 40.7355, 14.7341 Background



This preview shows how black text looks on a background with the HunterLab color 61.1737, 40.7355, 14.7341.



This preview shows how white text looks on a background with the HunterLab color 61.1737, 40.7355, 14.7341.

Color Blindness Simulation

Color vision deficiency is a very complex topic, and I could not describe the different causes any better than Wikipedia does, so if you want to learn more, you should check out their [article about color blindness](#).

Dichromacy



Original Color

61.1737, 40.7355, 14.7341

Protanopia

61.2628, -2.4957, 6.8350

Deuteranopia

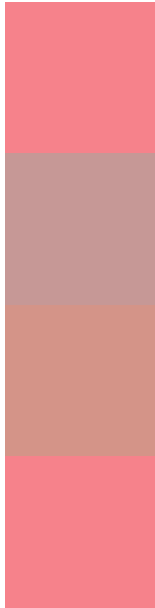
61.4198, 4.2290, 16.1485



Tritanopia

61.1737, 40.7355, 14.7341

Trichromacy



Original Color

61.1737, 40.7355, 14.7341

Protanomaly

60.5510, 12.0176, 9.2684

Deuteranomaly

60.7902, 17.4870, 15.0470

Tritanomaly

61.1737, 40.7355, 14.7341

Monochromacy



Original Color

61.1737, 40.7355, 14.7341

Achromatopsia

61.7516, -3.2949, 3.3551

Achromatomaly

60.6505, 11.2840, 6.8232

CSS Examples

Text

The CSS property to change the color of the text to HunterLab 61.1737, 40.7355, 14.7341 is called "color". The color property can be set on classes, ids or directly on the HTML element.

This example shows how text in the color `rgb(246, 130, 139)` looks like.

```
.text, #text, p{  
    color:rgb(246, 130, 139)  
}
```

If you want to add a text shadow in that color use the text-shadow property, you can generate a text shadow directly with our [CSS Text Shadow Generator](#).

Here you see how black text with a 4 pixel rgb(246, 130, 139) colored shadow looks like.

```
.shadow{ text-shadow: 4px 4px 2px rgb(246, 130, 139) }
```

Border

The CSS property to change the border of an element to HunterLab 61.1737, 40.7355, 14.7341 is called "border". The border property can be set on classes, ids or directly on the HTML element.

This example shows the color as border, it can be applied via the CSS property "border" or "border-color".

```
.border, #border, table{ border:4px solid rgb(246, 130, 139) }
```


If only the border color should be changed use the property `border-color`.

```
.border{ border-color:rgb(246, 130, 139) }
```

If you want to add a box shadow in that color use:

Here you see how a box with a 4 pixel `rgb(246, 130, 139)` colored shadow looks like.

```
.boxshadow{ -moz-box-shadow:4px 4px 4px  
4px rgb(246, 130, 139); -webkit-box-  
shadow:4px 4px 4px 4px rgb(246, 130, 139);  
box-shadow:4px 4px 4px 4px rgb(246, 130,  
139) }
```

Background

The CSS property to change the background color of an element to HunterLab 61.1737, 40.7355, 14.7341 is called "background". The background property can be set on classes, ids or directly on the HTML element.

```
.background, #background, body{  
background: rgb(246, 130, 139) }
```

If only the background color should be changed can be used:

```
.background{ background-color: rgb(246,  
130, 139) }
```

This example shows the color as background, it is applied via the CSS property "background".

To optimize and compress your CSS code, you can use our [online CSS compressor and optimizer](#) based on csstidy. If you want to create a linear or radial gradient as background or border, check our [CSS Gradient Generator](#).

Hey! You found this booklet interesting? Support Converting Colors with the new Membership Option!

The pro membership hides all ads, plus gives you double the colors in the color bucket, and more awesome pro features!

[Learn more, Memberships starting at \\$2.50/m!](#)

**Follow me
on Twitter!**

@ConvertingColor