

Converting Colors

HunterLab(61.1757, 4.9490,
6.1082)

Have a look what the booklet for
HunterLab(61.1757, 4.9490, 6.1082)
contains.

HunterLab(61.2289, 4.8644, 6.0520)	3
<i>Conversions</i>	4
<i>Details</i>	6
<i>Harmonies</i>	12
<i>Previews</i>	24
<i>Color Blindness Simulation</i>	28
<i>CSS Examples</i>	31

Color

**HunterLab(61.2289, 4.8644,
6.0520)**

Conversions

Conversions Part 1

Format	Color
Hex	B89F9F
RGB	184, 159, 159
RGB Percent	72%, 62%, 62%
CMY	0.2784, 0.3765, 0.3765
CMYK	0.00, 0.14, 0.14, 0.28
HSL	0°, 15%, 67%
HSV	0°, 14%, 72%
XYZ	38.4233, 37.4898, 38.0119
YIQ	166.4750, 14.9000, 5.3000

Conversions

Conversions Part 2

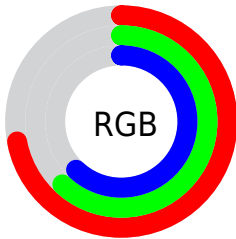
Format	Color
R _Y B	184, 159, 159
Decimal	12099487
CIE Lab	67.64, 9.17, 3.39
CIE LCh	68, 9.779, 20.265
Yxy	37.4915, 0.3373, 0.3291
Android (android.graphics.Color)	4290289567 (0xFFB89F9F)
YUV	166.4750, -3.6852, 15.3694
Hunter-Lab	61.2289, 4.8644, 6.0520

Details

The HunterLab color $61.2289, 4.8644, 6.0520$ is a light color, and the websafe version is hex $CC9999$. A complement of this color would be $67.1652, -10.9948, 1.1637$, and the grayscale version is $61.9587, -3.3060, 3.3663$.

A 20% lighter version of the original color is $84.5420, 4.3227, 7.5540$, and $40.7837, 4.9125, 4.5917$ is the 20% darker color. If you saturate the color by 10%, you get $55.7097, 11.4876, 7.8757$, and if you desaturate by 10%, it is $67.0702, -1.4829, 4.3469$.

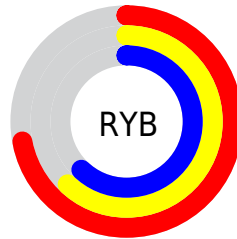
Distribution



Red (72%)

Green (62%)

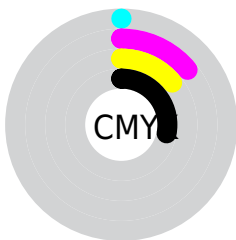
Blue (62%)



Red (72%)

Yellow (62%)

Blue (62%)

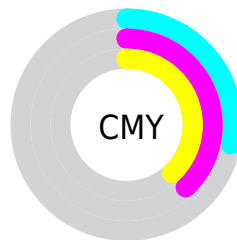


Cyan (0%)

Magenta (14%)

Yellow (14%)

Black (28%)



Cyan (28%)

Magenta (38%)

Yellow (38%)

Brightness & Saturation Gradients

These gradients show how the HunterLab color 61.2289, 4.8644, 6.0520 changes by changing the brightness by 10 percent. The first figure shows a shift by +10% for each color and the second figure -10%.

Similar to the brightness gradients but the following saturation gradients show a change of the HunterLab color 61.2289, 4.8644, 6.0520 by changing the saturation by 10% instead.

■ 61.2289, 4.8644,
6.0520

■ 61.2289, 4.8644,
6.0520

183.1484, 1.7834,
13.9367

■ 50.5848, 4.9557,
5.2976

■ 84.4559, 4.4983,
7.6389

■ 40.6397, 4.9801,
4.5672

■ 96.9691, 4.2376,
8.4687

■ 31.4482, 4.9258,
3.8614

110.0457, 3.9300,
9.3226

■ 23.0782, 4.7790,
3.1787

123.6624, 3.5786,
10.2001

■ 15.6198, 4.5195,
2.5154

137.7986, 3.1860,
11.1007

■ 9.1992, 4.1276,
2.0269

152.4358, 2.7547,

0.0000, NaN, NaN

12.0240

0.0000, NaN, NaN

167.5574, 2.2866,
12.9694

0.0000, NaN, NaN

■ 61.2289, 4.8644,
6.0520

■ 61.2289, 4.8644,
6.0520

■ 55.7097, 11.4876,
7.8757

■ 67.0702, -1.4829,
4.3469

■ 50.5679, 18.3845,
9.8168

■ 73.1822, -7.5686,
2.7474

■ 45.8788, 25.4893,
11.8599

■ 79.5290, -13.4251,
1.2416

■ 41.7314, 32.6386,
13.9568

■ 86.0810, -19.0853,
-0.1837

■ 38.2256, 39.5198,
16.0098

■ 92.8143, -24.5804,
-1.5407

■ 35.4594, 45.6505,
17.8642

■ 94.3029, -25.7603,
-1.8236

■ 33.5037, 50.4499,
19.3306

■ 32.3654, 53.4530,
20.2537

■ 31.9233, 54.6652,
20.6280

Harmonies

Analogous

The Analogous color harmony consists of three colors that are next to each other on the color wheel.



61.2303, 5.2852, 1.9576



61.2289, 4.8644, 6.0520



61.2303, 2.2271, 9.1995

Triad

The Triadic color harmony groups three colors that are evenly spaced from another and form a triangle on the color wheel.



61.2303, 4.8625, 6.0530



61.2303, -9.6359, 8.2534



61.2303, -4.6932, -5.1335

Complementary

The Complementary color scheme is a pair of colors which are on the opposite of each other on the color wheel.



61.2289, 4.8644, 6.0520



67.1652, -10.9948, 1.1637

Split Complementary

Split-complementary colors differ from the complementary color scheme. The scheme consists of three colors, the original color and two neighbors of the complement color.



61.2303, -8.5805, -3.1785



61.2289, 4.8644, 6.0520



61.2303, -11.3806, 4.6771

Square

The Square scheme is like the rectangle color scheme, but the four colors are evenly spaced on the color wheel.



61.2303, 4.8625, 6.0530



61.2303, -6.1706, 10.4064



61.2303, -10.9998, 0.4820



61.2303, -0.3152, -4.7001

Rectangle

The Rectangle color scheme consists of four colors that form a rectangle on the color wheel.



61.2289, 4.8644, 6.0520



61.2303, -0.3899, 10.4286



61.2303, -10.9998, 0.4820



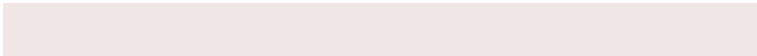
61.2303, -6.0986, -4.7289

Sweetspot

The Sweet Spot groups the original color and five complimentary colors.



61.2303, 4.8625, 6.0530



89.9161, -1.5947, 5.9595



62.0063, 8.9919, -4.9959



41.4689, -0.4480, 2.8449



96.5975, -5.1542, 5.2483



43.2801, -2.3093, 2.3515

Same Dimension

The Same Dimension uses a secret algorithm to generate beautiful new colors.



61.2303, 4.8625, 6.0530



80.4018, 8.9009, 8.7919



64.8144, -1.3832, 9.9086



30.0207, 1.0050, 2.5053



26.5020, 45.3810, 17.1249



4.9766, 8.5183, 3.2157

Inverse Universe

The Inverse Universe completely reimagines the original color for something new.



67.1652, -10.9948, 1.1637



89.9332, -16.5909, 0.9312



63.3618, -4.9362, -3.4768



31.9538, -4.1541, 0.9147



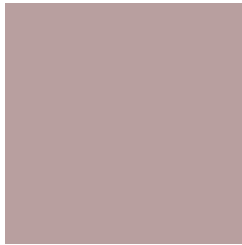
50.9942, -27.0301, -5.3881



9.5749, -5.0755, -1.0112

Previews

White Background



This preview shows how the HunterLab color 61.2289, 4.8644, 6.0520 looks on a white background.

Color Contrast Check

Large Text (above 18pt) WCAG AA × Fail

Any Text WCAG AA × Fail

Large Text (above 18pt) WCAG AAA × Fail

Any Text WCAG AAA × Fail

Black Background



This preview shows how the HunterLab color 61.2289, 4.8644, 6.0520 looks on a black background.

Color Contrast Check

Large Text (above 18pt) WCAG AA ✓ Pass

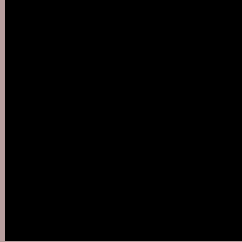
Any Text WCAG AA ✓ Pass

Large Text (above 18pt) WCAG AAA ✓ Pass

Any Text WCAG AAA ✓ Pass

If you want to check with other color combinations, try the [Color Contrast Checker](#).

HunterLab 61.2289, 4.8644, 6.0520 Background



This preview shows how black text looks on a background with the HunterLab color 61.2289, 4.8644, 6.0520.



This preview shows how white text looks on a background with the HunterLab color 61.2289, 4.8644,

Color Blindness Simulation

Color vision deficiency is a very complex topic, and I could not describe the different causes any better than Wikipedia does, so if you want to learn more, you should check out their [article about color blindness](#).

Dichromacy



Original Color

61.2289, 4.8644, 6.0520

Protanopia

61.2245, -2.3438, 4.5828

Deuteranopia

61.1284, 4.5276, 5.9318



Tritanopia

61.0987, 7.9515, 0.8835

Trichromacy



Original Color

61.2289, 4.8644, 6.0520

Protanomaly

61.1658, 0.3792, 5.0125

Deuteranomaly

61.1284, 4.5276, 5.9318

Tritanomaly

61.2545, 6.7953, 2.9444

Monochromacy



Original Color

61.2289, 4.8644, 6.0520

Achromatopsia

61.7516, -3.2949, 3.3551

Achromatomaly

61.4190, -0.1211, 4.3948

CSS Examples

Text

The CSS property to change the color of the text to HunterLab 61.2289, 4.8644, 6.0520 is called "color". The color property can be set on classes, ids or directly on the HTML element.

This example shows how text in the color `rgb(184, 159, 159)` looks like.

```
.text, #text, p{  
    color:rgb(184, 159, 159)  
}
```

If you want to add a text shadow in that color use the text-shadow property, you can generate a text shadow directly with our [CSS Text Shadow Generator](#).

Here you see how black text with a 4 pixel rgb(184, 159, 159) colored shadow looks like.

```
.shadow{ text-shadow: 4px 4px 2px rgb(184, 159, 159) }
```

Border

The CSS property to change the border of an element to HunterLab 61.2289, 4.8644, 6.0520 is called "border". The border property can be set on classes, ids or directly on the HTML element.

This example shows the color as border, it can be applied via the CSS property "border" or "border-color".

```
.border, #border, table{ border:4px solid rgb(184, 159, 159) }
```


If only the border color should be changed use the property `border-color`.

```
.border{ border-color:rgb(184, 159, 159) }
```

If you want to add a box shadow in that color use:

Here you see how a box with a 4 pixel `rgb(184, 159, 159)` colored shadow looks like.

```
.boxshadow{ -moz-box-shadow:4px 4px 4px  
4px rgb(184, 159, 159); -webkit-box-  
shadow:4px 4px 4px 4px rgb(184, 159, 159);  
box-shadow:4px 4px 4px 4px rgb(184, 159,  
159) }
```

Background

The CSS property to change the background color of an element to HunterLab 61.2289, 4.8644, 6.0520 is called "background". The background property can be set on classes, ids or directly on the HTML element.

```
.background, #background, body{  
background: rgb(184, 159, 159) }
```

If only the background color should be changed can be used:

```
.background{ background-color: rgb(184,  
159, 159) }
```

This example shows the color as background, it is applied via the CSS property "background".

To optimize and compress your CSS code, you can use our [online CSS compressor and optimizer](#) based on csstidy. If you want to create a linear or radial gradient as background or border, check our [CSS Gradient Generator](#).

Hey! You found this booklet interesting? Support Converting Colors with the new Membership Option!

The pro membership hides all ads, plus gives you double the colors in the color bucket, and more awesome pro features!

[Learn more, Memberships starting at \\$2.50/m!](#)

**Follow me
on Twitter!**

@ConvertingColor