

Converting Colors

HunterLab(61.2324, 49.6482,
10.4771)

Have a look what the booklet for
HunterLab(61.2324, 49.6482,
10.4771) contains.

HunterLab(61.1401, 49.7967, 10.5649)	3
<i>Conversions</i>	4
<i>Details</i>	6
<i>Harmonies</i>	12
<i>Previews</i>	24
<i>Color Blindness Simulation</i>	28
<i>CSS Examples</i>	31

Color

**HunterLab(61.1401, 49.7967,
10.5649)**

Conversions

Conversions Part 1

Format	Color
Hex	FF7A96
RGB	255, 122, 150
RGB Percent	100%, 48%, 59%
CMY	0.0000, 0.5215, 0.4118
CMYK	0.00, 0.52, 0.41, 0.00
HSL	347°, 100%, 74%
HSV	347°, 52%, 100%
XYZ	53.7046, 37.3811, 33.2390
YIQ	164.9590, 70.2800, 36.9040

Conversions

Conversions Part 2

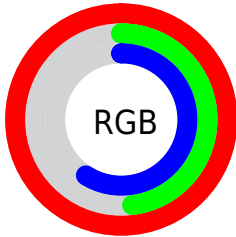
Format	Color
R_{YB}	255, 122, 150
Decimal	16743062
CIE Lab	67.56, 53.17, 9.41
CIE LCh	68, 54.000, 10.033
Yxy	37.3831, 0.4320, 0.3007
Android (android.graphics.Color)	4294933142 (0xFFFF7A96)
YUV	164.9590, -7.3748, 78.9660
Hunter-Lab	61.1401, 49.7967, 10.5649

Details

The HunterLab color **61.1401, 49.7967, 10.5649** is a light color, and the websafe version is hex **FF6699**. A complement of this color would be **90.1136, -43.4973, 6.9477**, and the grayscale version is **61.3340, -3.2726, 3.3324**.

A 20% lighter version of the original color is **75.8027, 27.6117, 2.5102**, and **40.4778, 46.0571, 8.4580** is the 20% darker color. If you saturate the color by 10%, you get **55.9704, 59.8837, 13.2144**, and if you desaturate by 10%, it is **67.2258, 39.0697, 8.5089**.

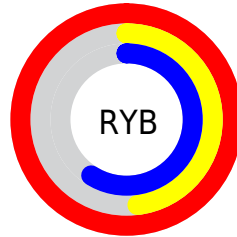
Distribution



Red (100%)

Green (48%)

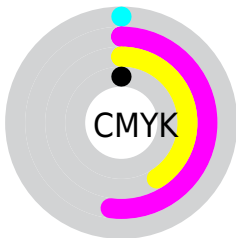
Blue (59%)



Red (100%)

Yellow (48%)

Blue (59%)

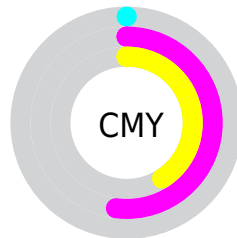


Cyan (0%)

Magenta (52%)

Yellow (41%)

Black (0%)



Cyan (0%)

Magenta (52%)

Yellow (41%)

Brightness & Saturation Gradients

These gradients show how the HunterLab color 61.1401, 49.7967, 10.5649 changes by changing the brightness by 10 percent. The first figure shows a shift by +10% for each color and the second figure -10%.

Similar to the brightness gradients but the following saturation gradients show a change of the HunterLab color 61.1401, 49.7967, 10.5649 by changing the saturation by 10% instead.

61.1401, 49.7967,
10.5649

61.1401, 49.7967,
10.5649

183.0208, 61.2537,
20.7589

50.5017, 48.0412,
9.4787

84.3573, 52.9741,
12.7539

40.5624, 46.1821,
8.3891

96.8659, 54.4128,
13.8602

31.3773, 44.2282,
7.2891

109.9380, 55.7574,
14.9773

23.0142, 42.2226,
6.1654

123.5505, 57.0137,
16.1065

15.5637, 40.2982,
4.9939

137.6825, 58.1868,
17.2487

9.1505, 38.9456,
4.7597

152.3157, 59.2817,

0.0000, INF, NaN

18.4045

0.0000, NaN, NaN

167.4335, 60.3026,
19.5744

0.0000, NaN, NaN

■ 61.1401, 49.7967,
10.5649

■ 61.1401, 49.7967,
10.5649

■ 55.9704, 59.8837,
13.2144

■ 67.2258, 39.0697,
8.5089

■ 51.8532, 68.6193,
16.3715

■ 74.0807, 28.2036,
7.0309

■ 48.8950, 75.1603,
19.8224

■ 81.5805, 17.4695,
6.0728

■ 47.1128, 78.8757,
23.2292

■ 89.6207, 6.9943,
5.5603

■ 46.3932, 80.0172,
25.5790

■ 98.1171, -3.1828,
5.4208

100.0000, -5.3358,
5.4332

Harmonies

Analogous

The Analogous color harmony consists of three colors that are next to each other on the color wheel.



61.1417, 47.0548, -13.8501



61.1401, 49.7967, 10.5649



61.1417, 36.7151, 25.5465

Triad

The Triadic color harmony groups three colors that are evenly spaced from another and form a triangle on the color wheel.



61.1417, 49.7927, 10.5662



61.1417, -30.4748, 28.4911



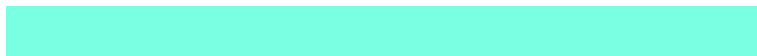
61.1417, -18.3959, -54.8068

Complementary

The Complementary color scheme is a pair of colors which are on the opposite of each other on the color wheel.



61.1401, 49.7967, 10.5649



90.1136, -43.4973, 6.9477

Split Complementary

Split-complementary colors differ from the complementary color scheme. The scheme consists of three colors, the original color and two neighbors of the complement color.



61.1417, -35.0449, -32.6553



61.1401, 49.7967, 10.5649



61.1417, -41.2279, 16.6268

Square

The Square scheme is like the rectangle color scheme, but the four colors are evenly spaced on the color wheel.



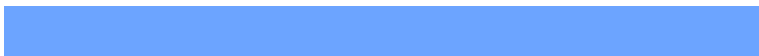
61.1417, 49.7927, 10.5662



61.1417, -11.1832, 32.8861



61.1417, -42.7591, -4.9197



61.1417, 5.0765, -58.4897

Rectangle

The Rectangle color scheme consists of four colors that form a rectangle on the color wheel.



61.1401, 49.7967, 10.5649



61.1417, 21.8278, 30.6438



61.1417, -42.7591, -4.9197



61.1417, -24.8686, -48.9563

Sweetspot

The Sweet Spot groups the original color and five complimentary colors.



61.1417, 49.7927, 10.5662



86.4701, 10.9889, 5.7095



61.1062, 57.9117, -53.1285



39.2384, 6.0814, 2.6895

0.0000, NaN, NaN



46.2646, -2.4686, 2.5136

Same Dimension

The Same Dimension uses a secret algorithm to generate beautiful new colors.



61.1417, 49.7927, 10.5662



55.5794, 60.6871, 13.4640



69.0646, 27.1539, 27.2240



42.4848, 1.9750, 2.5398



33.5615, 57.9368, 18.1079



10.5441, 18.3430, 4.5968

Inverse Universe

The Inverse Universe completely reimagines the original color for something new.



61.1417, 49.7927, 10.5662



55.5794, 60.6871, 13.4640



78.1974, -20.4920, -23.9062



42.4848, 1.9750, 2.5398



33.5615, 57.9368, 18.1079



10.5441, 18.3430, 4.5968

Previews

White Background



This preview shows how the HunterLab color 61.1401, 49.7967, 10.5649 looks on a white background.

Color Contrast Check

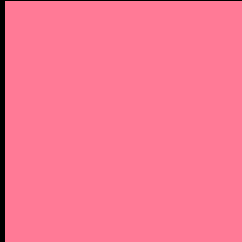
Large Text (above 18pt) WCAG AA × Fail

Any Text WCAG AA × Fail

Large Text (above 18pt) WCAG AAA × Fail

Any Text WCAG AAA × Fail

Black Background



This preview shows how the HunterLab color 61.1401, 49.7967, 10.5649 looks on a black background.

Color Contrast Check

Large Text (above 18pt) WCAG AA ✓ Pass

Any Text WCAG AA ✓ Pass

Large Text (above 18pt) WCAG AAA ✓ Pass

Any Text WCAG AAA ✓ Pass

If you want to check with other color combinations, try the [Color Contrast Checker](#).

HunterLab 61.1401, 49.7967, 10.5649 Background



This preview shows how black text looks on a background with the HunterLab color 61.1401, 49.7967, 10.5649.

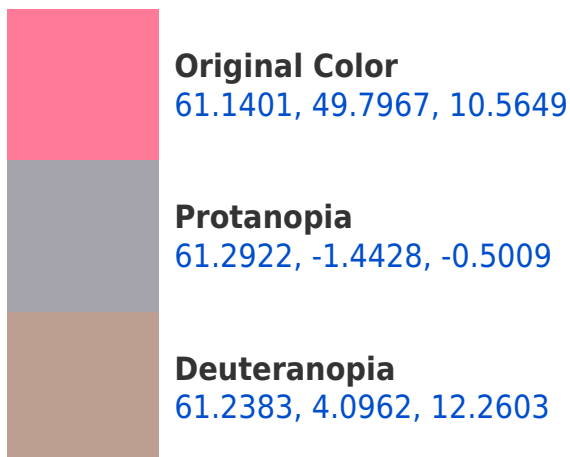


This preview shows how white text looks on a background with the HunterLab color 61.1401, 49.7967,

Color Blindness Simulation

Color vision deficiency is a very complex topic, and I could not describe the different causes any better than Wikipedia does, so if you want to learn more, you should check out their [article about color blindness](#).

Dichromacy

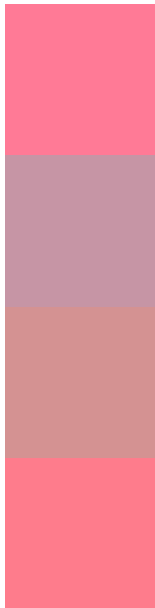




Tritanopia

61.2040, 46.0364, 16.6706

Trichromacy



Original Color

61.1401, 49.7967, 10.5649

Protanomaly

60.1808, 15.7811, 2.2890

Deuteranomaly

60.5228, 19.7800, 11.0000

Tritanomaly

61.1388, 47.2029, 14.4392

Monochromacy



Original Color

61.1401, 49.7967, 10.5649

Achromatopsia

61.3402, -3.2730, 3.3327

Achromatomaly

60.0323, 15.0134, 4.4079

CSS Examples

Text

The CSS property to change the color of the text to HunterLab 61.1401, 49.7967, 10.5649 is called "color". The color property can be set on classes, ids or directly on the HTML element.

This example shows how text in the color `rgb(255, 122, 150)` looks like.

```
.text, #text, p{  
    color:rgb(255, 122, 150)  
}
```

If you want to add a text shadow in that color use the text-shadow property, you can generate a text shadow directly with our [CSS Text Shadow Generator](#).

Here you see how black text with a 4 pixel rgb(255, 122, 150) colored shadow looks like.

```
.shadow{ text-shadow: 4px 4px 2px rgb(255, 122, 150) }
```

Border

The CSS property to change the border of an element to HunterLab 61.1401, 49.7967, 10.5649 is called "border". The border property can be set on classes, ids or directly on the HTML element.

This example shows the color as border, it can be applied via the CSS property "border" or "border-color".

```
.border, #border, table{ border:4px solid rgb(255, 122, 150) }
```


If only the border color should be changed use the property `border-color`.

```
.border{ border-color:rgb(255, 122, 150) }
```

If you want to add a box shadow in that color use:

Here you see how a box with a 4 pixel `rgb(255, 122, 150)` colored shadow looks like.

```
.boxshadow{ -moz-box-shadow:4px 4px 4px  
4px rgb(255, 122, 150); -webkit-box-  
shadow:4px 4px 4px 4px rgb(255, 122, 150);  
box-shadow:4px 4px 4px 4px rgb(255, 122,  
150) }
```

Background

The CSS property to change the background color of an element to HunterLab 61.1401, 49.7967, 10.5649 is called "background". The background property can be set on classes, ids or directly on the HTML element.

```
.background, #background, body{  
background: rgb(255, 122, 150) }
```

If only the background color should be changed can be used:

```
.background{ background-color: rgb(255,  
122, 150) }
```

This example shows the color as background, it is applied via the CSS property "background".

To optimize and compress your CSS code, you can use our [online CSS compressor and optimizer](#) based on csstidy. If you want to create a linear or radial gradient as background or border, check our [CSS Gradient Generator](#).

Hey! You found this booklet interesting? Support Converting Colors with the new Membership Option!

The pro membership hides all ads, plus gives you double the colors in the color bucket, and more awesome pro features!

[Learn more, Memberships starting at \\$2.50/m!](#)

**Follow me
on Twitter!**

@ConvertingColor