

Converting Colors

HunterLab(61.2376, 39.7458,
-2.5800)

Have a look what the booklet for
HunterLab(61.2376, 39.7458,
-2.5800) contains.

HunterLab(61.2224, 39.6760, -2.3705)	3
<i>Conversions</i>	4
<i>Details</i>	6
<i>Harmonies</i>	12
<i>Previews</i>	24
<i>Color Blindness Simulation</i>	28
<i>CSS Examples</i>	31

Color

**HunterLab(61.2224, 39.6760,
-2.3705)**

Conversions

Conversions Part 1

Format	Color
Hex	EA85B2
RGB	234, 133, 178
RGB Percent	92%, 52%, 70%
CMY	0.0824, 0.4784, 0.3020
CMYK	0.00, 0.43, 0.24, 0.08
HSL	333°, 71%, 72%
HSV	333°, 43%, 92%
XYZ	50.3551, 37.4818, 46.7002
YIQ	168.3290, 45.7510, 35.4070

Conversions

Conversions Part 2

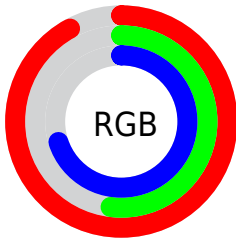
Format	Color
RYB	234, 133, 178
Decimal	15369650
CIELab	67.64, 44.07, -6.63
CIELCh	68, 44.569, 351.451
Yxy	37.4836, 0.3743, 0.2786
Android (android.graphics.Color)	4293559730 (0xFFEA85B2)
YUV	168.3290, 4.7678, 57.5935
Hunter-Lab	61.2224, 39.6760, -2.3705

Details

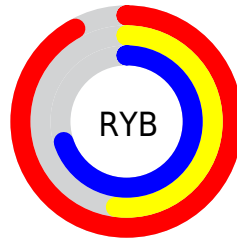
The HunterLab color **61.2224, 39.6760, -2.3705** is a light color, and the websafe version is hex **FF99CC**. A complement of this color would be **82.1628, -38.8900, 15.2036**, and the grayscale version is **62.6805, -3.3445, 3.4056**.

A 20% lighter version of the original color is **79.4776, 27.2791, -8.6184**, and **40.5563, 36.7475, -2.7303** is the 20% darker color. If you saturate the color by 10%, you get **55.9259, 49.7761, -2.4190**, and if you desaturate by 10%, it is **67.2060, 29.2399, -1.5482**.

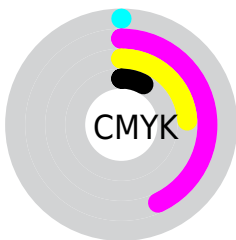
Distribution



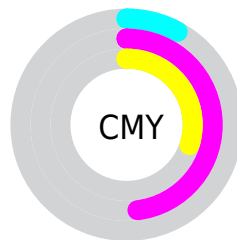
- Red (92%)
- Green (52%)
- Blue (70%)



- Red (92%)
- Yellow (52%)
- Blue (70%)



- Cyan (0%)
- Magenta (43%)
- Yellow (24%)
- Black (8%)



- Cyan (8%)
- Magenta (48%)
- Yellow (30%)

Brightness & Saturation Gradients

These gradients show how the HunterLab color 61.2224, 39.6760, -2.3705 changes by changing the brightness by 10 percent. The first figure shows a shift by +10% for each color and the second figure -10%.

Similar to the brightness gradients but the following saturation gradients show a change of the HunterLab color 61.2224, 39.6760, -2.3705 by changing the saturation by 10% instead.

61.2224, 39.6760,
-2.3705

61.2224, 39.6760,
-2.3705

183.1392, 48.4048,
1.9446

50.5788, 38.2378,
-2.6298

84.4488, 42.2178,
-1.6948

40.6341, 36.6853,
-2.8327

96.9617, 43.3422,
-1.2891

31.4431, 35.0138,
-2.9710

110.0380, 44.3772,
-0.8416

23.0736, 33.2365,
-3.0356

123.6544, 45.3289,
-0.3550

15.6158, 31.4137,
-3.0144

137.7902, 46.2029,
0.1687

9.1957, 29.8070,
-2.8972

152.4271, 47.0040,

0.0000, INF, -NF

0.7275

0.0000, NaN, NaN

167.5485, 47.7367,
1.3200

0.0000, NaN, NaN

■ 61.2224, 39.6760,
-2.3705

■ 61.2224, 39.6760,
-2.3705

■ 55.9259, 49.7761,
-2.4190

■ 67.2060, 29.2399,
-1.5482

■ 51.4293, 59.0612,
-1.5470

■ 73.7659, 18.7777,
-0.1082

■ 47.8460, 66.8577,
0.3483

■ 80.8132, 8.4464,
1.8198

■ 45.2541, 72.4404,
3.2479

■ 88.2741, -1.6843,
4.1315

■ 43.6559, 75.3168,
6.9508

■ 96.0891, -11.5965,
6.7469

■ 43.0082, 75.9886,
9.6846

■ 98.0982, -12.0163,
3.0568

Harmonies

Analogous

The Analogous color harmony consists of three colors that are next to each other on the color wheel.



61.2239, 29.8656, -24.1859



61.2224, 39.6760, -2.3705



61.2239, 36.8692, 15.2769

Triad

The Triadic color harmony groups three colors that are evenly spaced from another and form a triangle on the color wheel.



61.2239, 39.6730, -2.3691



61.2239, -16.7312, 28.5701



61.2239, -25.4753, -32.8139

Complementary

The Complementary color scheme is a pair of colors which are on the opposite of each other on the color wheel.



61.2224, 39.6760, -2.3705



82.1628, -38.8900, 15.2036

Split Complementary

Split-complementary colors differ from the complementary color scheme. The scheme consists of three colors, the original color and two neighbors of the complement color.



61.2239, -35.1580, -11.6414



61.2224, 39.6760, -2.3705



61.2239, -30.5796, 22.0539

Square

The Square scheme is like the rectangle color scheme, but the four colors are evenly spaced on the color wheel.



61.2239, 39.6730, -2.3691



61.2239, 2.5625, 29.6246



61.2239, -36.8984, 8.5337



61.2239, -8.8920, -45.1114

Rectangle

The Rectangle color scheme consists of four colors that form a rectangle on the color wheel.



61.2224, 39.6760, -2.3705



61.2239, 28.3625, 22.9672



61.2239, -36.8984, 8.5337



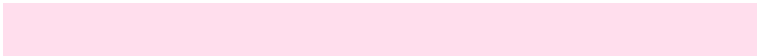
61.2239, -29.5516, -26.2289

Sweetspot

The Sweet Spot groups the original color and five complimentary colors.



61.2239, 39.6730, -2.3691



89.1712, 9.2000, 2.0295



57.8611, 34.8376, -43.5009



40.4378, 5.4165, 0.7019

0.0000, NaN, NaN



46.2646, -2.4686, 2.5136

Same Dimension

The Same Dimension uses a secret algorithm to generate beautiful new colors.



61.2239, 39.6730, -2.3691



62.1557, 53.8823, -2.7017



61.1385, 30.9950, 16.6943



38.9430, 2.1823, 1.2278



32.2782, 57.1021, 6.7124



9.1500, 16.3840, 0.3758

Inverse Universe

The Inverse Universe completely reimagines the original color for something new.



61.2239, 39.6730, -2.3691



62.1557, 53.8823, -2.7017



81.8162, -28.5708, -6.4956



38.9430, 2.1823, 1.2278



32.2782, 57.1021, 6.7124



9.1500, 16.3840, 0.3758

Previews

White Background



This preview shows how the HunterLab color 61.2224, 39.6760, -2.3705 looks on a white background.

Color Contrast Check

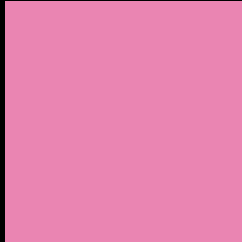
Large Text (above 18pt) WCAG AA × Fail

Any Text WCAG AA × Fail

Large Text (above 18pt) WCAG AAA × Fail

Any Text WCAG AAA × Fail

Black Background



This preview shows how the HunterLab color 61.2224, 39.6760, -2.3705 looks on a black background.

Color Contrast Check

Large Text (above 18pt) WCAG AA ✓ Pass

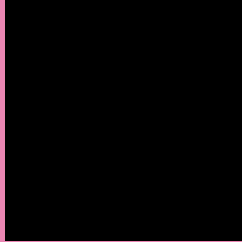
Any Text WCAG AA ✓ Pass

Large Text (above 18pt) WCAG AAA ✓ Pass

Any Text WCAG AAA ✓ Pass

If you want to check with other color combinations, try the [Color Contrast Checker](#).

HunterLab 61.2224, 39.6760, -2.3705 Background



This preview shows how black text looks on a background with the HunterLab color 61.2224, 39.6760, -2.3705.



This preview shows how white text looks on a background with the HunterLab color 61.2224, 39.6760, -2.3705.

-2.3705.

Color Blindness Simulation

Color vision deficiency is a very complex topic, and I could not describe the different causes any better than Wikipedia does, so if you want to learn more, you should check out their [article about color blindness](#).

Dichromacy



Original Color

61.2224, 39.6760, -2.3705

Protanopia

61.5607, 1.2030, -13.5009

Deuteranopia

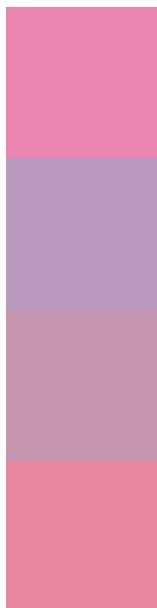
61.2420, 4.2981, -0.4627



Tritanopia

61.1030, 31.7386, 10.6170

Trichromacy



Original Color

61.2224, 39.6760, -2.3705

Protanomaly

60.8138, 14.0505, -10.3360

Deuteranomaly

60.7566, 16.8730, -1.8451

Tritanomaly

61.0755, 34.6542, 5.9557

Monochromacy



Original Color

61.2224, 39.6760, -2.3705

Achromatopsia

62.5758, -3.3389, 3.3999

Achromatomaly

61.3414, 11.6865, 0.2784

CSS Examples

Text

The CSS property to change the color of the text to HunterLab 61.2224, 39.6760, -2.3705 is called "color". The color property can be set on classes, ids or directly on the HTML element.

This example shows how text in the color `rgb(234, 133, 178)` looks like.

```
.text, #text, p{  
    color:rgb(234, 133, 178)  
}
```

If you want to add a text shadow in that color use the text-shadow property, you can generate a text shadow directly with our [CSS Text Shadow Generator](#).

Here you see how black text with a 4 pixel rgb(234, 133, 178) colored shadow looks like.

```
.shadow{ text-shadow: 4px 4px 2px rgb(234, 133, 178) }
```

Border

The CSS property to change the border of an element to HunterLab 61.2224, 39.6760, -2.3705 is called "border". The border property can be set on classes, ids or directly on the HTML element.

This example shows the color as border, it can be applied via the CSS property "border" or "border-color".

```
.border, #border, table{ border:4px solid rgb(234, 133, 178) }
```


If only the border color should be changed use the property `border-color`.

```
.border{ border-color:rgb(234, 133, 178) }
```

If you want to add a box shadow in that color use:

Here you see how a box with a 4 pixel `rgb(234, 133, 178)` colored shadow looks like.

```
.boxshadow{ -moz-box-shadow:4px 4px 4px  
4px rgb(234, 133, 178); -webkit-box-  
shadow:4px 4px 4px 4px rgb(234, 133, 178);  
box-shadow:4px 4px 4px 4px rgb(234, 133,  
178) }
```

Background

The CSS property to change the background color of an element to HunterLab 61.2224, 39.6760, -2.3705 is called "background". The background property can be set on classes, ids or directly on the HTML element.

```
.background, #background, body{  
background: rgb(234, 133, 178) }
```

If only the background color should be changed can be used:

```
.background{ background-color: rgb(234,  
133, 178) }
```

This example shows the color as background, it is applied via the CSS property "background".

To optimize and compress your CSS code, you can use our [online CSS compressor and optimizer](#) based on csstidy. If you want to create a linear or radial gradient as background or border, check our [CSS Gradient Generator](#).

Hey! You found this booklet interesting? Support Converting Colors with the new Membership Option!

The pro membership hides all ads, plus gives you double the colors in the color bucket, and more awesome pro features!

[Learn more, Memberships starting at \\$2.50/m!](#)

**Follow me
on Twitter!**

@ConvertingColor