

Converting Colors

HunterLab(61.2962, 0.0968,
-0.6657)

Have a look what the booklet for
HunterLab(61.2962, 0.0968, -0.6657)
contains.

HunterLab(61.2669, -0.0346, -0.5077)	3
<i>Conversions</i>	4
<i>Details</i>	6
<i>Harmonies</i>	12
<i>Previews</i>	24
<i>Color Blindness Simulation</i>	28
<i>CSS Examples</i>	31

Color

**HunterLab(61.2669, -0.0346,
-0.5077)**

Conversions

Conversions Part 1

Format	Color
Hex	A8A3AD
RGB	168, 163, 173
RGB Percent	66%, 64%, 68%
CMY	0.3412, 0.3608, 0.3216
CMYK	0.03, 0.06, 0.00, 0.32
HSL	270°, 6%, 66%
HSV	270°, 6%, 68%
XYZ	36.7884, 37.5363, 44.8414
YIQ	165.6350, -0.2300, 4.1700

Conversions

Conversions Part 2

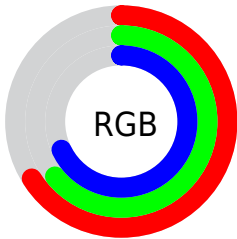
Format	Color
RYB	168, 163, 173
Decimal	11051949
CIELab	67.68, 3.71, -4.53
CIELCh	68, 5.850, 309.296
Yxy	37.5379, 0.3087, 0.3150
Android (android.graphics.Color)	4289242029 (0xFFA8A3AD)
YUV	165.6350, 3.6309, 2.0741
Hunter-Lab	61.2669, -0.0346, -0.5077

Details

The HunterLab color $61.2669, -0.0346, -0.5077$ is a light color, and the websafe version is hex 999999 . A complement of this color would be $63.9197, -6.5679, 7.1297$, and the grayscale version is $61.5882, -3.2862, 3.3462$.

A 20% lighter version of the original color is $84.5176, -1.1091, 0.5699$, and $40.5738, 0.8734, -1.4168$ is the 20% darker color. If you saturate the color by 10%, you get $55.5791, 5.9700, -7.8233$, and if you desaturate by 10%, it is $67.1484, -5.9192, 6.3641$.

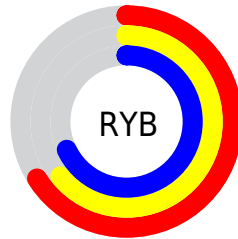
Distribution



Red (66%)

Green (64%)

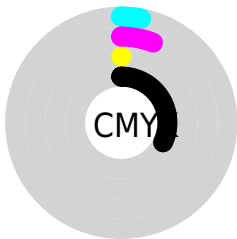
Blue (68%)



Red (66%)

Yellow (64%)

Blue (68%)

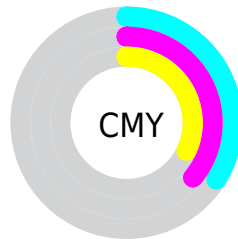


Cyan (3%)

Magenta (6%)

Yellow (0%)

Black (32%)



Cyan (34%)

Magenta (36%)

Yellow (32%)

Brightness & Saturation Gradients

These gradients show how the HunterLab color 61.2669, -0.0346, -0.5077 changes by changing the brightness by 10 percent. The first figure shows a shift by +10% for each color and the second figure -10%.

Similar to the brightness gradients but the following saturation gradients show a change of the HunterLab color 61.2669, -0.0346, -0.5077 by changing the saturation by 10% instead.

■ 61.2669, -0.0346,
-0.5077

■ 61.2669, -0.0346,
-0.5077

183.2031, -5.1472,
4.5263

■ 50.6204, 0.3374,
-0.8646

■ 84.4981, -0.9178,
0.3489

■ 40.6728, 0.6600,
-1.1701

■ 97.0134, -1.4196,
0.8397

■ 31.4786, 0.9257,
-1.4171

110.0919, -1.9585,
1.3689

■ 23.1056, 1.1261,
-1.5975

123.7104, -2.5326,
1.9345

■ 15.6439, 1.2490,
-1.6997

137.8483, -3.1399,
2.5345

■ 9.2200, 1.2833,
-1.7106

152.4872, -3.7790,

0.0000, NaN, -NF

3.1674

0.0000, NaN, NaN

167.6105, -4.4485,
3.8318

0.0000, NaN, NaN

■ 61.2669, -0.0346,
-0.5077

■ 61.2669, -0.0346,
-0.5077

■ 55.5791, 5.9700,
-7.8233

■ 67.1484, -5.9192,
6.3641

■ 50.1112, 12.1186,
-15.6869

■ 73.1963, -11.7015,
12.8739

■ 44.9036, 18.4193,
-24.2104

■ 79.3934, -17.4035,
19.0924

■ 40.0077, 24.8544,
-33.5029

■ 85.7248, -23.0436,
25.0757

■ 35.4909, 31.3462,
-43.6290

■ 92.1784, -28.6371,
30.8689

■ 31.4404, 37.6991,
-54.5226

■ 94.7310, -28.6175,
33.1273

■ 27.9625, 43.5199,
-65.8368

■ 95.4590, -25.9153,
33.8119

■ 25.1714, 48.1662,
-76.7709

■ 96.2183, -23.1203,
34.5225

■ 23.1428, 50.9089,
-86.1358

■ 97.0088, -20.2357,
35.2586

Harmonies

Analogous

The Analogous color harmony consists of three colors that are next to each other on the color wheel.



61.2682, -2.4532, -1.6059



61.2669, -0.0346, -0.5077



61.2682, 1.5311, 1.6094

Triad

The Triadic color harmony groups three colors that are evenly spaced from another and form a triangle on the color wheel.



61.2682, -0.0360, -0.5066



61.2682, -1.4739, 7.6672



61.2682, -8.1845, 2.5527

Complementary

The Complementary color scheme is a pair of colors which are on the opposite of each other on the color wheel.



61.2669, -0.0346, -0.5077



63.9197, -6.5679, 7.1297

Split Complementary

Split-complementary colors differ from the complementary color scheme. The scheme consists of three colors, the original color and two neighbors of the complement color.



61.2682, -7.9323, 5.0118



61.2669, -0.0346, -0.5077



61.2682, -4.0873, 7.8959

Square

The Square scheme is like the rectangle color scheme, but the four colors are evenly spaced on the color wheel.



61.2682, -0.0360, -0.5066



61.2682, 0.6912, 6.3047



61.2682, -6.4430, 6.9429



61.2682, -7.1378, 0.2088

Rectangle

The Rectangle color scheme consists of four colors that form a rectangle on the color wheel.



61.2669, -0.0346, -0.5077



61.2682, 1.8677, 3.2758



61.2682, -6.4430, 6.9429



61.2682, -8.2484, 3.3941

Sweetspot

The Sweet Spot groups the original color and five complimentary colors.



61.2682, -0.0360, -0.5066



84.9105, -3.0134, 2.8275



62.3473, -4.0878, 0.7496



39.6248, -1.4463, 1.3669



93.2148, -4.9737, 5.0645



40.3295, -2.1519, 2.1912

Same Dimension

The Same Dimension uses a secret algorithm to generate beautiful new colors.



61.2682, -0.0360, -0.5066



80.9539, 1.0216, -1.9562



61.7077, 1.4640, 0.0629



28.6977, 0.4546, -0.8051



19.2890, 44.5238, -76.6110



3.6888, 7.9887, -10.5739

Inverse Universe

The Inverse Universe completely reimagines the original color for something new.



61.5690, 0.6836, 2.2742



81.4540, 2.2104, 2.6711



63.5111, -8.0142, 6.6458



28.8839, 0.8966, 0.9183



26.5296, 47.3602, 2.2013



4.5481, 8.3447, -1.3705

Previews

White Background



This preview shows how the HunterLab color 61.2669, -0.0346, -0.5077 looks on a white background.

Color Contrast Check

Large Text (above 18pt) WCAG AA × Fail

Any Text WCAG AA × Fail

Large Text (above 18pt) WCAG AAA × Fail

Any Text WCAG AAA × Fail

Black Background



This preview shows how the HunterLab color 61.2669, -0.0346, -0.5077 looks on a black background.

Color Contrast Check

Large Text (above 18pt) WCAG AA ✓ Pass

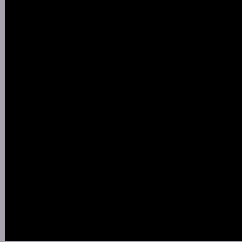
Any Text WCAG AA ✓ Pass

Large Text (above 18pt) WCAG AAA ✓ Pass

Any Text WCAG AAA ✓ Pass

If you want to check with other color combinations, try the [Color Contrast Checker](#).

HunterLab 61.2669, -0.0346, -0.5077 Background



This preview shows how black text looks on a background with the HunterLab color 61.2669, -0.0346, -0.5077.



This preview shows how white text looks on a background with the HunterLab color 61.2669, -0.0346, -0.5077.

-0.5077.

Color Blindness Simulation

Color vision deficiency is a very complex topic, and I could not describe the different causes any better than Wikipedia does, so if you want to learn more, you should check out their [article about color blindness](#).

Dichromacy



Original Color

61.2669, -0.0346, -0.5077

Protanopia

61.3239, -1.2702, -0.9510

Deuteranopia

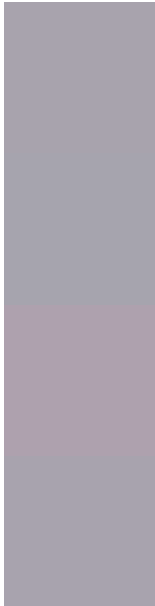
61.2737, 4.4679, -0.9131



Tritanopia

61.3305, 0.3105, -1.4110

Trichromacy



Original Color

61.2669, -0.0346, -0.5077

Protanomaly

61.4116, -0.9682, -0.8363

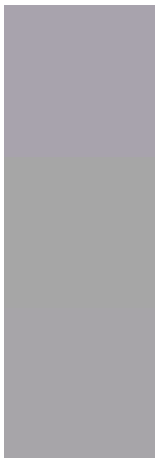
Deuteranomaly

61.2735, 3.0069, -0.9390

Tritanomaly

61.2986, 0.1374, -0.9579

Monochromacy



Original Color

61.2669, -0.0346, -0.5077

Achromatopsia

61.7516, -3.2949, 3.3551

Achromatomaly

61.6363, -2.0055, 1.8376

CSS Examples

Text

The CSS property to change the color of the text to HunterLab 61.2669, -0.0346, -0.5077 is called "color". The color property can be set on classes, ids or directly on the HTML element.

This example shows how text in the color `rgb(168, 163, 173)` looks like.

```
.text, #text, p{  
    color:rgb(168, 163, 173)  
}
```

If you want to add a text shadow in that color use the text-shadow property, you can generate a text shadow directly with our [CSS Text Shadow Generator](#).

Here you see how black text with a 4 pixel rgb(168, 163, 173) colored shadow looks like.

```
.shadow{ text-shadow: 4px 4px 2px rgb(168, 163, 173) }
```

Border

The CSS property to change the border of an element to HunterLab 61.2669, -0.0346, -0.5077 is called "border". The border property can be set on classes, ids or directly on the HTML element.

This example shows the color as border, it can be applied via the CSS property "border" or "border-color".

```
.border, #border, table{ border:4px solid rgb(168, 163, 173) }
```


If only the border color should be changed use the property `border-color`.

```
.border{ border-color:rgb(168, 163, 173) }
```

If you want to add a box shadow in that color use:

Here you see how a box with a 4 pixel `rgb(168, 163, 173)` colored shadow looks like.

```
.boxshadow{ -moz-box-shadow:4px 4px 4px  
4px rgb(168, 163, 173); -webkit-box-  
shadow:4px 4px 4px 4px rgb(168, 163, 173);  
box-shadow:4px 4px 4px 4px rgb(168, 163,  
173) }
```

Background

The CSS property to change the background color of an element to HunterLab 61.2669, -0.0346, -0.5077 is called "background". The background property can be set on classes, ids or directly on the HTML element.

```
.background, #background, body{  
background: rgb(168, 163, 173) }
```

If only the background color should be changed can be used:

```
.background{ background-color: rgb(168,  
163, 173) }
```

This example shows the color as background, it is applied via the CSS property "background".

To optimize and compress your CSS code, you can use our [online CSS compressor and optimizer](#) based on csstidy. If you want to create a linear or radial gradient as background or border, check our [CSS Gradient Generator](#).

Hey! You found this booklet interesting? Support Converting Colors with the new Membership Option!

The pro membership hides all ads, plus gives you double the colors in the color bucket, and more awesome pro features!

[Learn more, Memberships starting at \\$2.50/m!](#)

**Follow me
on Twitter!**

@ConvertingColor