

Converting Colors

HunterLab(61.3187, -1.4830,
0.5043)

Have a look what the booklet for
HunterLab(61.3187, -1.4830, 0.5043)
contains.

| | |
|--|----|
| HunterLab(61.3174, -1.4816, 0.5033) | 3 |
| <i>Conversions</i> | 4 |
| <i>Details</i> | 6 |
| <i>Harmonies</i> | 12 |
| <i>Previews</i> | 24 |
| <i>Color Blindness Simulation</i> | 28 |
| <i>CSS Examples</i> | 31 |

Color

**HunterLab(61.3174, -1.4816,
0.5033)**

Conversions

Conversions Part 1

| Format | Color |
|---------------|---------------------------|
| Hex | A6A4AB |
| RGB | 166, 164, 171 |
| RGB Percent | 65%, 64%, 67% |
| CMY | 0.3490, 0.3568, 0.3294 |
| CMYK | 0.03, 0.04, 0.00, 0.33 |
| HSL | 257°, 4%, 66% |
| HSV | 257°, 4%, 67% |
| XYZ | 36.3521, 37.5982, 43.8694 |
| YIQ | 165.3960, -1.0550, 2.6010 |

Conversions

Conversions Part 2

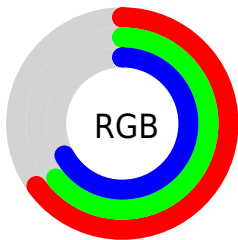
| Format | Color |
|-------------------------------------|-----------------------------|
| R_{YB} | 166, 164, 171 |
| Decimal | 10921131 |
| CIE Lab | 67.72, 2.06, -3.37 |
| CIE LCh | 68, 3.946, 301.479 |
| Yxy | 37.5998, 0.3085, 0.3191 |
| Android (android.graphics.Color) | 4289111211 (0xFFA6A4AB) |
| YUV | 165.3960, 2.7628, 0.5297 |
| Hunter-Lab | 61.3174, -1.4816, 0.5033 |

Details

The HunterLab color $61.3174, -1.4816, 0.5033$ is a light color, and the websafe version is hex 999999 . A complement of this color would be $63.4368, -5.1374, 6.1716$, and the grayscale version is $61.4936, -3.2811, 3.3411$.

A 20% lighter version of the original color is $84.5731, -2.6296, 1.6259$, and $40.6173, -0.4869, -0.4565$ is the 20% darker color. If you saturate the color by 10%, you get $55.3412, 3.3174, -7.1188$, and if you desaturate by 10%, it is $67.4697, -6.1440, 7.6093$.

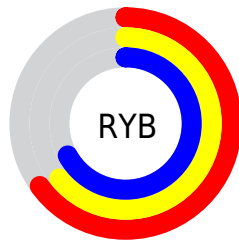
Distribution



Red (65%)

Green (64%)

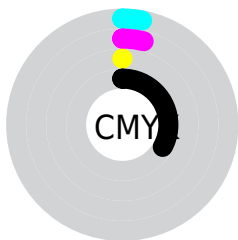
Blue (67%)



Red (65%)

Yellow (64%)

Blue (67%)

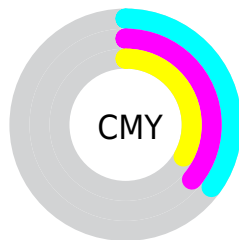


Cyan (3%)

Magenta (4%)

Yellow (0%)

Black (33%)



Cyan (35%)

Magenta (36%)

Yellow (33%)

Brightness & Saturation Gradients

These gradients show how the HunterLab color 61.3174, -1.4816, 0.5033 changes by changing the brightness by 10 percent. The first figure shows a shift by +10% for each color and the second figure -10%.

Similar to the brightness gradients but the following saturation gradients show a change of the HunterLab color 61.3174, -1.4816, 0.5033 by changing the saturation by 10% instead.

■ 61.3174, -1.4816,
0.5033

■ 61.3174, -1.4816,
0.5033

183.2758, -7.2151,
5.9435

■ 50.6678, -1.0233,
0.0908

■ 84.5544, -2.5236,
1.4628

■ 40.7169, -0.6085,
-0.2736

■ 97.0722, -3.0992,
2.0018

■ 31.5191, -0.2433,
-0.5835

110.1533, -3.7089,
2.5772

■ 23.1421, 0.0658,
-0.8316

123.7742, -4.3509,
3.1874

■ 15.6760, 0.3098,
-1.0074

137.9145, -5.0237,
3.8304

■ 9.2475, 0.4804,
-1.0976

152.5556, -5.7261,

0.0000, NaN, NaN

4.5050

0.0000, NaN, NaN

167.6811, -6.4569,
5.2097

0.0000, NaN, NaN

■ 61.3174, -1.4816,
0.5033

■ 61.3174, -1.4816,
0.5033

■ 55.3412, 3.3174,
-7.1188

■ 67.4697, -6.1440,
7.6093

■ 49.5637, 8.2970,
-15.4034

■ 73.7739, -10.6987,
14.3074

■ 44.0211, 13.5016,
-24.5306

■ 80.2155, -15.1732,
20.6849

■ 38.7613, 18.9754,
-34.7176

■ 86.7816, -19.5886,
26.8083

■ 33.8502, 24.7411,
-46.1932

■ 93.4618, -23.9610,
32.7295

■ 29.3798, 30.7484,
-59.1109

■ 96.3673, -22.6546,
35.2796

■ 25.4757, 36.7681,
-73.3267

■ 97.5036, -18.5211,
36.3285

■ 22.2964, 42.2273,
-87.9762

■ 97.8368, -17.3190,
36.6346

■ 20.0028, 46.1367,
-101.0689

Harmonies

Analogous

The Analogous color harmony consists of three colors that are next to each other on the color wheel.



61.3187, -3.1870, 0.0032



61.3174, -1.4816, 0.5033



61.3187, -0.2479, 1.7675

Triad

The Triadic color harmony groups three colors that are evenly spaced from another and form a triangle on the color wheel.



61.3187, -1.4830, 0.5043



61.3187, -1.6372, 6.1220



61.3187, -6.6492, 3.2539

Complementary

The Complementary color scheme is a pair of colors which are on the opposite of each other on the color wheel.



61.3174, -1.4816, 0.5033



63.4368, -5.1374, 6.1716

Split Complementary

Split-complementary colors differ from the complementary color scheme. The scheme consists of three colors, the original color and two neighbors of the complement color.



61.3187, -6.2446, 4.8676



61.3174, -1.4816, 0.5033



61.3187, -3.3632, 6.4949

Square

The Square scheme is like the rectangle color scheme, but the four colors are evenly spaced on the color wheel.



61.3187, -1.4830, 0.5043



61.3187, -0.3377, 5.0087



61.3187, -5.0468, 6.0421



61.3187, -6.1582, 1.6184

Rectangle

The Rectangle color scheme consists of four colors that form a rectangle on the color wheel.



61.3174, -1.4816, 0.5033



61.3187, 0.1362, 2.8548



61.3187, -5.0468, 6.0421



61.3187, -6.6135, 3.8168

Sweetspot

The Sweet Spot groups the original color and five complimentary colors.



61.3187, -1.4830, 0.5043



84.5672, -3.9198, 3.6641



62.6228, -4.5443, 2.0301



39.9570, -1.8676, 1.7557



93.2148, -4.9737, 5.0645



40.3295, -2.1519, 2.1912

Same Dimension

The Same Dimension uses a secret algorithm to generate beautiful new colors.



61.3187, -1.4830, 0.5043



81.2519, -1.3536, -0.3078



61.6291, -0.4150, 0.9020



29.1215, -0.3733, -0.2893



16.5192, 41.7072, -93.3361



3.2238, 7.4335, -12.7432

Inverse Universe

The Inverse Universe completely reimagines the original color for something new.



61.7051, -0.2769, 1.9486



81.8974, 0.6543, 2.1161



63.1364, -6.1932, 5.8118



29.3773, 0.4211, 0.6736



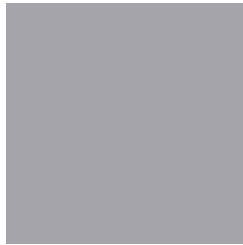
27.5665, 51.0982, -12.3398



4.6924, 8.8588, -3.3472

Previews

White Background



This preview shows how the HunterLab color 61.3174, -1.4816, 0.5033 looks on a white background.

Color Contrast Check

Large Text (above 18pt) WCAG AA × Fail

Any Text WCAG AA × Fail

Large Text (above 18pt) WCAG AAA × Fail

Any Text WCAG AAA × Fail

Black Background



This preview shows how the HunterLab color 61.3174, -1.4816, 0.5033 looks on a black background.

Color Contrast Check

Large Text (above 18pt) WCAG AA ✓ Pass

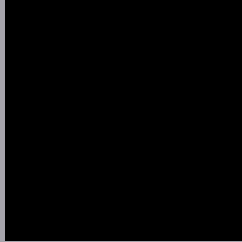
Any Text WCAG AA ✓ Pass

Large Text (above 18pt) WCAG AAA ✓ Pass

Any Text WCAG AAA ✓ Pass

If you want to check with other color combinations, try the [Color Contrast Checker](#).

HunterLab 61.3174, -1.4816, 0.5033 Background



This preview shows how black text looks on a background with the HunterLab color 61.3174, -1.4816, 0.5033.



This preview shows how white text looks on a background with the HunterLab color 61.3174, -1.4816,

0.5033.

Color Blindness Simulation

Color vision deficiency is a very complex topic, and I could not describe the different causes any better than Wikipedia does, so if you want to learn more, you should check out their [article about color blindness](#).

Dichromacy



Original Color

61.3174, -1.4816, 0.5033

Protanopia

61.3174, -1.4816, 0.5033

Deuteranopia

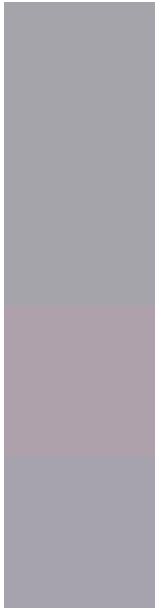
61.3067, 4.4522, 0.1090



Tritanopia

61.2735, 0.1798, -1.9850

Trichromacy



Original Color

61.3174, -1.4816, 0.5033

Protanomaly

61.3174, -1.4816, 0.5033

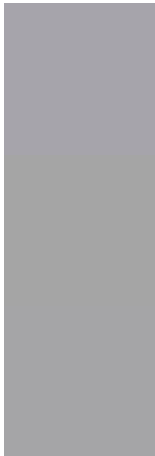
Deuteranomaly

61.2103, 2.6668, -0.0411

Tritanomaly

61.2094, -0.1683, -1.0747

Monochromacy



Original Color

61.3174, -1.4816, 0.5033

Achromatopsia

61.3402, -3.2730, 3.3327

Achromatomaly

61.4000, -2.9455, 2.4800

CSS Examples

Text

The CSS property to change the color of the text to HunterLab 61.3174, -1.4816, 0.5033 is called "color". The color property can be set on classes, ids or directly on the HTML element.

This example shows how text in the color `rgb(166, 164, 171)` looks like.

```
.text, #text, p{  
    color:rgb(166, 164, 171)  
}
```

If you want to add a text shadow in that color use the text-shadow property, you can generate a text shadow directly with our [CSS Text Shadow Generator](#).

Here you see how black text with a 4 pixel rgb(166, 164, 171) colored shadow looks like.

```
.shadow{ text-shadow: 4px 4px 2px rgb(166, 164, 171) }
```

Border

The CSS property to change the border of an element to HunterLab 61.3174, -1.4816, 0.5033 is called "border". The border property can be set on classes, ids or directly on the HTML element.

This example shows the color as border, it can be applied via the CSS property "border" or "border-color".

```
.border, #border, table{ border:4px solid rgb(166, 164, 171) }
```


If only the border color should be changed use the property `border-color`.

```
.border{ border-color:rgb(166, 164, 171) }
```

If you want to add a box shadow in that color use:

Here you see how a box with a 4 pixel `rgb(166, 164, 171)` colored shadow looks like.

```
.boxshadow{ -moz-box-shadow:4px 4px 4px  
4px rgb(166, 164, 171); -webkit-box-  
shadow:4px 4px 4px 4px rgb(166, 164, 171);  
box-shadow:4px 4px 4px 4px rgb(166, 164,  
171) }
```

Background

The CSS property to change the background color of an element to HunterLab 61.3174, -1.4816, 0.5033 is called "background". The background property can be set on classes, ids or directly on the HTML element.

```
.background, #background, body{  
background: rgb(166, 164, 171) }
```

If only the background color should be changed can be used:

```
.background{ background-color: rgb(166,  
164, 171) }
```

This example shows the color as background, it is applied via the CSS property "background".

To optimize and compress your CSS code, you can use our [online CSS compressor and optimizer](#) based on csstidy. If you want to create a linear or radial gradient as background or border, check our [CSS Gradient Generator](#).

Hey! You found this booklet interesting? Support Converting Colors with the new Membership Option!

The pro membership hides all ads, plus gives you double the colors in the color bucket, and more awesome pro features!

[Learn more, Memberships starting at \\$2.50/m!](#)

**Follow me
on Twitter!**

@ConvertingColor