

Converting Colors

HunterLab(61.3308, 11.3201,
8.2064)

Have a look what the booklet for
HunterLab(61.3308, 11.3201,
8.2064) contains.

HunterLab(61.4939, 11.1839, 8.1891)	3
<i>Conversions</i>	4
<i>Details</i>	6
<i>Harmonies</i>	12
<i>Previews</i>	24
<i>Color Blindness Simulation</i>	28
<i>CSS Examples</i>	31

Color

**HunterLab(61.4939, 11.1839,
8.1891)**

Conversions

Conversions Part 1

Format	Color
Hex	C69B9B
RGB	198, 155, 155
RGB Percent	78%, 61%, 61%
CMY	0.2235, 0.3921, 0.3922
CMYK	0.00, 0.22, 0.22, 0.22
HSL	0°, 27%, 69%
HSV	0°, 22%, 78%
XYZ	40.9264, 37.8150, 36.1523
YIQ	167.8570, 25.6280, 9.1160

Conversions

Conversions Part 2

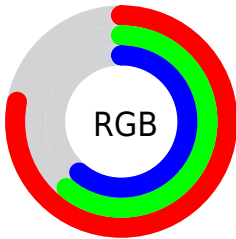
Format	Color
RYB	198, 155, 155
Decimal	13015963
CIELab	67.89, 15.99, 6.14
CIElCh	68, 17.131, 20.995
Yxy	37.8167, 0.3562, 0.3291
Android (android.graphics.Color)	4291206043 (0xFFC69B9B)
YUV	167.8570, -6.3385, 26.4354
Hunter-Lab	61.4939, 11.1839, 8.1891

Details

The HunterLab color **61.4939, 11.1839, 8.1891** is a light color, and the websafe version is hex **CC9999**. A complement of this color would be **71.7165, -16.2277, -0.2618**, and the grayscale version is **62.5358, -3.3368, 3.3977**.

A 20% lighter version of the original color is **84.8273, 11.0464, 10.3018**, and **40.9142, 10.3188, 6.4130** is the 20% darker color. If you saturate the color by 10%, you get **55.8090, 18.6572, 10.2855**, and if you desaturate by 10%, it is **67.5844, 4.0090, 6.2252**.

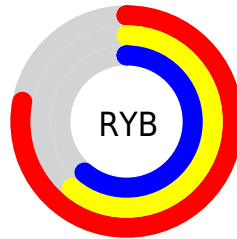
Distribution



Red (78%)

Green (61%)

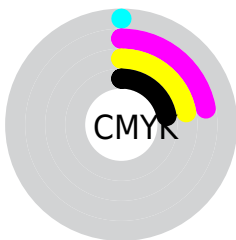
Blue (61%)



Red (78%)

Yellow (61%)

Blue (61%)

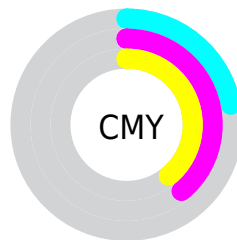


Cyan (0%)

Magenta (22%)

Yellow (22%)

Black (22%)



Cyan (22%)

Magenta (39%)

Yellow (39%)

Brightness & Saturation Gradients

These gradients show how the HunterLab color 61.4939, 11.1839, 8.1891 changes by changing the brightness by 10 percent. The first figure shows a shift by +10% for each color and the second figure -10%.

Similar to the brightness gradients but the following saturation gradients show a change of the HunterLab color 61.4939, 11.1839, 8.1891 by changing the saturation by 10% instead.

■ 61.4939, 11.1839,
8.1891

■ 61.4939, 11.1839,
8.1891

183.5301, 10.5590,
17.1189

■ 50.8335, 10.9418,
7.2856

■ 84.7509, 11.4373,
10.0473

■ 40.8709, 10.6145,
6.3943

■ 97.2780, 11.4672,
11.0020

■ 31.6606, 10.1869,
5.5125

110.3679, 11.4390,
11.9750

■ 23.2698, 9.6416,
4.6338

123.9974, 11.3572,
12.9665

■ 15.7881, 8.9548,
3.7460

138.1458, 11.2254,
13.9767

■ 9.3432, 8.0971,
3.2316

152.7949, 11.0466,

0.0000, INF, NaN

15.0055

0.0000, NaN, NaN

167.9280, 10.8237,
16.0529

0.0000, NaN, NaN

■ 61.4939, 11.1839,
8.1891

■ 61.4939, 11.1839,
8.1891

■ 55.8090, 18.6572,
10.2855

■ 67.5844, 4.0090,
6.2252

■ 50.6040, 26.3788,
12.4980

■ 74.0134, -2.8595,
4.3866

■ 45.9758, 34.1886,
14.7815

■ 80.7324, -9.4489,
2.6625

■ 42.0331, 41.7721,
17.0384

■ 87.7020, -15.7939,
1.0383

■ 38.8857, 48.6256,
19.1077

■ 94.8910, -21.9306,
-0.5003

■ 36.6186, 54.1146,
20.7831

■ 95.2606, -22.2377,
-0.5738

■ 35.2526, 57.6882,
21.8813

■ 34.6500, 59.3363,
22.3899

Harmonies

Analogous

The Analogous color harmony consists of three colors that are next to each other on the color wheel.



61.4953, 12.0581, 1.0982



61.4939, 11.1839, 8.1891



61.4953, 6.3299, 13.3315

Triad

The Triadic color harmony groups three colors that are evenly spaced from another and form a triangle on the color wheel.



61.4953, 11.1817, 8.1901



61.4953, -14.3892, 11.5805



61.4953, -5.5885, -12.2790

Complementary

The Complementary color scheme is a pair of colors which are on the opposite of each other on the color wheel.



61.4939, 11.1839, 8.1891



71.7165, -16.2277, -0.2618

Split Complementary

Split-complementary colors differ from the complementary color scheme. The scheme consists of three colors, the original color and two neighbors of the complement color.



61.4953, -12.3424, -8.6548



61.4939, 11.1839, 8.1891



61.4953, -17.2564, 5.5147

Square

The Square scheme is like the rectangle color scheme, but the four colors are evenly spaced on the color wheel.



61.4953, 11.1817, 8.1901



61.4953, -8.5080, 15.1148



61.4953, -16.5260, -1.9244



61.4953, 2.1193, -11.3329

Rectangle

The Rectangle color scheme consists of four colors that form a rectangle on the color wheel.



61.4939, 11.1839, 8.1891



61.4953, 1.6195, 15.2472



61.4953, -16.5260, -1.9244



61.4953, -8.0396, -11.5398

Sweetspot

The Sweet Spot groups the original color and five complimentary colors.



61.4953, 11.1817, 8.1901



93.8293, 1.0710, 7.1356



62.8698, 18.3195, -11.3234



43.1680, 0.7553, 3.3709

0.0000, NaN, NaN



46.2646, -2.4686, 2.5136

Same Dimension

The Same Dimension uses a secret algorithm to generate beautiful new colors.



61.4953, 11.1817, 8.1901



78.2239, 19.4809, 12.1806



67.5425, 0.2740, 14.4023



32.6146, 1.1244, 2.7325



27.9427, 47.8499, 18.0559



6.0808, 10.4107, 3.9292

Inverse Universe

The Inverse Universe completely reimagines the original color for something new.



71.7165, -16.2277, -0.2618



94.6133, -24.6044, -1.4170



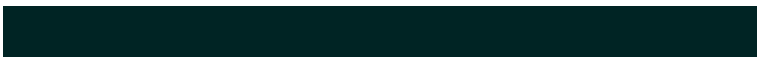
65.0333, -5.8448, -8.7372



34.7382, -4.5430, 0.9856



53.7698, -28.5030, -5.6777



11.7006, -6.2025, -1.2352

Previews

White Background



This preview shows how the HunterLab color 61.4939, 11.1839, 8.1891 looks on a white background.

Color Contrast Check

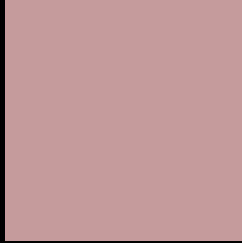
Large Text (above 18pt) WCAG AA × Fail

Any Text WCAG AA × Fail

Large Text (above 18pt) WCAG AAA × Fail

Any Text WCAG AAA × Fail

Black Background



This preview shows how the HunterLab color 61.4939, 11.1839, 8.1891 looks on a black background.

Color Contrast Check

Large Text (above 18pt) WCAG AA ✓ Pass

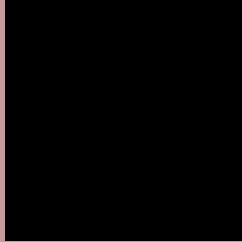
Any Text WCAG AA ✓ Pass

Large Text (above 18pt) WCAG AAA ✓ Pass

Any Text WCAG AAA ✓ Pass

If you want to check with other color combinations, try the [Color Contrast Checker](#).

HunterLab 61.4939, 11.1839, 8.1891 Background



This preview shows how black text looks on a background with the HunterLab color 61.4939, 11.1839, 8.1891.



This preview shows how white text looks on a background with the HunterLab color 61.4939, 11.1839,

8.1891.

Color Blindness Simulation

Color vision deficiency is a very complex topic, and I could not describe the different causes any better than Wikipedia does, so if you want to learn more, you should check out their [article about color blindness](#).

Dichromacy



Original Color

61.4939, 11.1839, 8.1891

Protanopia

61.6396, -2.5238, 5.9479

Deuteranopia

61.5742, 4.2987, 8.5792



Tritanopia

61.3524, 14.0607, 3.6506

Trichromacy



Original Color

61.4939, 11.1839, 8.1891

Protanomaly

61.3691, 2.3723, 6.6050

Deuteranomaly

61.4280, 6.6855, 8.4609

Tritanomaly

61.5033, 12.9354, 5.6197

Monochromacy



Original Color

61.4939, 11.1839, 8.1891

Achromatopsia

62.5758, -3.3389, 3.3999

Achromatomaly

61.9858, 1.8125, 5.0838

CSS Examples

Text

The CSS property to change the color of the text to HunterLab 61.4939, 11.1839, 8.1891 is called "color". The color property can be set on classes, ids or directly on the HTML element.

This example shows how text in the color `rgb(198, 155, 155)` looks like.

```
.text, #text, p{  
    color:rgb(198, 155, 155)  
}
```

If you want to add a text shadow in that color use the text-shadow property, you can generate a text shadow directly with our [CSS Text Shadow Generator](#).

Here you see how black text with a 4 pixel rgb(198, 155, 155) colored shadow looks like.

```
.shadow{ text-shadow: 4px 4px 2px rgb(198, 155, 155) }
```

Border

The CSS property to change the border of an element to HunterLab 61.4939, 11.1839, 8.1891 is called "border". The border property can be set on classes, ids or directly on the HTML element.

This example shows the color as border, it can be applied via the CSS property "border" or "border-color".

```
.border, #border, table{ border:4px solid rgb(198, 155, 155) }
```


If only the border color should be changed use the property border-color.

```
.border{ border-color:rgb(198, 155, 155) }
```

If you want to add a box shadow in that color use:

Here you see how a box with a 4 pixel rgb(198, 155, 155) colored shadow looks like.

```
.boxshadow{ -moz-box-shadow:4px 4px 4px  
4px rgb(198, 155, 155); -webkit-box-  
shadow:4px 4px 4px 4px rgb(198, 155, 155);  
box-shadow:4px 4px 4px 4px rgb(198, 155,  
155) }
```

Background

The CSS property to change the background color of an element to HunterLab 61.4939, 11.1839, 8.1891 is called "background". The background property can be set on classes, ids or directly on the HTML element.

```
.background, #background, body{  
background: rgb(198, 155, 155) }
```

If only the background color should be changed can be used:

```
.background{ background-color: rgb(198,  
155, 155) }
```

This example shows the color as background, it is applied via the CSS property "background".

To optimize and compress your CSS code, you can use our [online CSS compressor and optimizer](#) based on csstidy. If you want to create a linear or radial gradient as background or border, check our [CSS Gradient Generator](#).

Hey! You found this booklet interesting? Support Converting Colors with the new Membership Option!

The pro membership hides all ads, plus gives you double the colors in the color bucket, and more awesome pro features!

[Learn more, Memberships starting at \\$2.50/m!](#)

**Follow me
on Twitter!**

@ConvertingColor