

Converting Colors

HunterLab(61.3488, 32.3345,
2.4078)

Have a look what the booklet for
HunterLab(61.3488, 32.3345,
2.4078) contains.

HunterLab(61.3378, 32.2833, 2.5523)	3
<i>Conversions</i>	4
<i>Details</i>	6
<i>Harmonies</i>	12
<i>Previews</i>	24
<i>Color Blindness Simulation</i>	28
<i>CSS Examples</i>	31

Color

**HunterLab(61.3378, 32.2833,
2.5523)**

Conversions

Conversions Part 1

Format	Color
Hex	E38BA8
RGB	227, 139, 168
RGB Percent	89%, 55%, 66%
CMY	0.1098, 0.4549, 0.3412
CMYK	0.00, 0.39, 0.26, 0.11
HSL	340°, 61%, 72%
HSV	340°, 39%, 89%
XYZ	47.9790, 37.6233, 41.7790
YIQ	168.6180, 43.1390, 27.6750

Conversions

Conversions Part 2

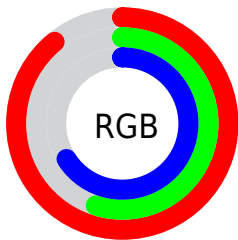
Format	Color
R _Y B	227, 139, 168
Decimal	14912424
CIE Lab	67.74, 37.15, -0.95
CIE LCh	68, 37.166, 358.538
Yxy	37.6251, 0.3767, 0.2954
Android (android.graphics.Color)	4293102504 (0xFFE38BA8)
YUV	168.6180, -0.3047, 51.2010
Hunter-Lab	61.3378, 32.2833, 2.5523

Details

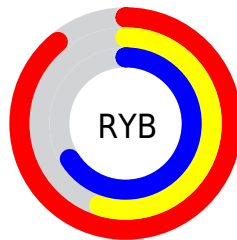
The HunterLab color **61.3378, 32.2833, 2.5523** is a light color, and the websafe version is hex **FF99CC**. A complement of this color would be **80.3152, -33.1801, 9.4666**, and the grayscale version is **62.8207, -3.3520, 3.4132**.

A 20% lighter version of the original color is **80.7287, 22.0174, -1.1423**, and **40.7718, 29.9488, 1.6201** is the 20% darker color. If you saturate the color by 10%, you get **55.8435, 41.9291, 3.2484**, and if you desaturate by 10%, it is **67.4509, 22.5295, 2.4718**.

Distribution



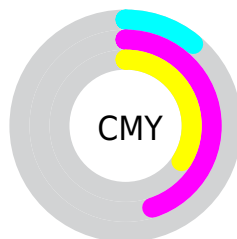
- Red (89%)
- Green (55%)
- Blue (66%)



- Red (89%)
- Yellow (55%)
- Blue (66%)



- Cyan (0%)
- Magenta (39%)
- Yellow (26%)
- Black (11%)



- Cyan (11%)
- Magenta (45%)
- Yellow (34%)

Brightness & Saturation Gradients

These gradients show how the HunterLab color 61.3378, 32.2833, 2.5523 changes by changing the brightness by 10 percent. The first figure shows a shift by +10% for each color and the second figure -10%.

Similar to the brightness gradients but the following saturation gradients show a change of the HunterLab color 61.3378, 32.2833, 2.5523 by changing the saturation by 10% instead.

61.3378, 32.2833,
2.5523

61.3378, 32.2833,
2.5523

183.3054, 38.8313,
8.8505

50.6871, 31.1107,
2.0215

84.5772, 34.3043,
3.7308

40.7348, 29.8232,
1.5308

97.0962, 35.1756,
4.3716

31.5355, 28.4091,
1.0852

110.1783, 35.9629,
5.0447

23.1569, 26.8659,
0.6895

123.8002, 36.6724,
5.7488

15.6890, 25.2154,
0.3507

137.9414, 37.3096,
6.4825

9.2587, 23.5901,
0.0767

152.5835, 37.8791,

0.0000, INF, NaN

7.2447

0.0000, NaN, NaN

167.7099, 38.3851,
8.0343

0.0000, NaN, NaN

■ 61.3378, 32.2833,
2.5523

■ 61.3378, 32.2833,
2.5523

■ 55.8435, 41.9291,
3.2484

■ 67.4509, 22.5295,
2.4718

■ 51.0771, 51.1100,
4.6505

■ 74.0800, 12.8797,
2.8997

■ 47.1583, 59.2634,
6.8080

■ 81.1454, 3.4249,
3.7433

■ 44.1880, 65.6884,
9.6701

■ 88.5817, -5.8050,
4.9238

■ 42.2125, 69.7508,
13.0430

■ 96.3368, -14.8143,
6.3785

■ 41.1378, 71.3607,
16.5641

■ 97.5043, -14.1295,
2.3057

■ 41.0319, 71.4997,
16.9689

Harmonies

Analogous

The Analogous color harmony consists of three colors that are next to each other on the color wheel.



61.3393, 26.6226, -14.8619



61.3378, 32.2833, 2.5523



61.3393, 27.5954, 16.2251

Triad

The Triadic color harmony groups three colors that are evenly spaced from another and form a triangle on the color wheel.



61.3393, 32.2804, 2.5536



61.3393, -17.8906, 24.5859



61.3393, -19.1686, -28.8915

Complementary

The Complementary color scheme is a pair of colors which are on the opposite of each other on the color wheel.



61.3378, 32.2833, 2.5523



80.3152, -33.1801, 9.4666

Split Complementary

Split-complementary colors differ from the complementary color scheme. The scheme consists of three colors, the original color and two neighbors of the complement color.



61.3393, -29.0389, -13.1405



61.3378, 32.2833, 2.5523



61.3393, -28.3585, 17.2510

Square

The Square scheme is like the rectangle color scheme, but the four colors are evenly spaced on the color wheel.



61.3393, 32.2804, 2.5536



61.3393, -2.4539, 26.7167



61.3393, -32.2174, 4.1139



61.3393, -4.0942, -35.7718

Rectangle

The Rectangle color scheme consists of four colors that form a rectangle on the color wheel.



61.3378, 32.2833, 2.5523



61.3393, 19.4923, 22.1187



61.3393, -32.2174, 4.1139



61.3393, -23.1426, -24.2821

Sweetspot

The Sweet Spot groups the original color and five complimentary colors.



61.3393, 32.2804, 2.5536



89.8637, 7.4540, 3.9055



59.9782, 32.8312, -34.3064



41.0817, 4.1032, 1.7455

0.0000, NaN, NaN



46.2646, -2.4686, 2.5136

Same Dimension

The Same Dimension uses a secret algorithm to generate beautiful new colors.



61.3393, 32.2804, 2.5536



64.5840, 46.2517, 3.5423



64.1858, 20.7196, 17.3486



38.0078, 1.9216, 1.7310



31.3658, 54.7155, 12.5108



8.6236, 15.2305, 1.9892

Inverse Universe

The Inverse Universe completely reimagines the original color for something new.



61.3393, 32.2804, 2.5536



64.5840, 46.2517, 3.5423



76.3479, -21.0563, -9.7598



38.0078, 1.9216, 1.7310



31.3658, 54.7155, 12.5108



8.6236, 15.2305, 1.9892

Previews

White Background



This preview shows how the HunterLab color 61.3378, 32.2833, 2.5523 looks on a white background.

Color Contrast Check

Large Text (above 18pt) WCAG AA × Fail

Any Text WCAG AA × Fail

Large Text (above 18pt) WCAG AAA × Fail

Any Text WCAG AAA × Fail

Black Background



This preview shows how the HunterLab color 61.3378, 32.2833, 2.5523 looks on a black background.

Color Contrast Check

Large Text (above 18pt) WCAG AA ✓ Pass

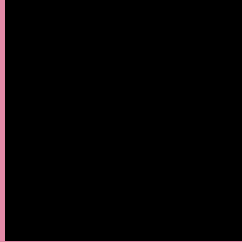
Any Text WCAG AA ✓ Pass

Large Text (above 18pt) WCAG AAA ✓ Pass

Any Text WCAG AAA ✓ Pass

If you want to check with other color combinations, try the [Color Contrast Checker](#).

HunterLab 61.3378, 32.2833, 2.5523 Background



This preview shows how black text looks on a background with the HunterLab color 61.3378, 32.2833, 2.5523.



This preview shows how white text looks on a background with the HunterLab color 61.3378, 32.2833,

2.5523.

Color Blindness Simulation

Color vision deficiency is a very complex topic, and I could not describe the different causes any better than Wikipedia does, so if you want to learn more, you should check out their [article about color blindness](#).

Dichromacy



Original Color

61.3378, 32.2833, 2.5523

Protanopia

61.4462, -0.2587, -5.3694

Deuteranopia

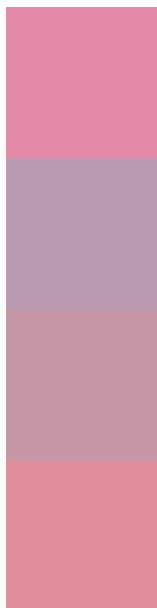
61.4549, 4.4630, 4.0616



Tritanopia

61.3356, 27.6731, 9.5641

Trichromacy



Original Color

61.3378, 32.2833, 2.5523

Protanomaly

60.9066, 10.6624, -3.2845

Deuteranomaly

60.9745, 14.2234, 3.2073

Tritanomaly

61.3898, 29.4030, 7.1016

Monochromacy



Original Color

61.3378, 32.2833, 2.5523

Achromatopsia

62.9885, -3.3609, 3.4223

Achromatomaly

61.8591, 8.9694, 2.2971

CSS Examples

Text

The CSS property to change the color of the text to HunterLab 61.3378, 32.2833, 2.5523 is called "color". The color property can be set on classes, ids or directly on the HTML element.

This example shows how text in the color `rgb(227, 139, 168)` looks like.

```
.text, #text, p{  
    color:rgb(227, 139, 168)  
}
```

If you want to add a text shadow in that color use the text-shadow property, you can generate a text shadow directly with our [CSS Text Shadow Generator](#).

Here you see how black text with a 4 pixel rgb(227, 139, 168) colored shadow looks like.

```
.shadow{ text-shadow: 4px 4px 2px rgb(227, 139, 168) }
```

Border

The CSS property to change the border of an element to HunterLab 61.3378, 32.2833, 2.5523 is called "border". The border property can be set on classes, ids or directly on the HTML element.

This example shows the color as border, it can be applied via the CSS property "border" or "border-color".

```
.border, #border, table{ border:4px solid rgb(227, 139, 168) }
```


If only the border color should be changed use the property `border-color`.

```
.border{ border-color:rgb(227, 139, 168) }
```

If you want to add a box shadow in that color use:

Here you see how a box with a 4 pixel `rgb(227, 139, 168)` colored shadow looks like.

```
.boxshadow{ -moz-box-shadow:4px 4px 4px  
4px rgb(227, 139, 168); -webkit-box-  
shadow:4px 4px 4px 4px rgb(227, 139, 168);  
box-shadow:4px 4px 4px 4px rgb(227, 139,  
168) }
```

Background

The CSS property to change the background color of an element to HunterLab 61.3378, 32.2833, 2.5523 is called "background". The background property can be set on classes, ids or directly on the HTML element.

```
.background, #background, body{  
background: rgb(227, 139, 168) }
```

If only the background color should be changed can be used:

```
.background{ background-color: rgb(227,  
139, 168) }
```

This example shows the color as background, it is applied via the CSS property "background".

To optimize and compress your CSS code, you can use our [online CSS compressor and optimizer](#) based on csstidy. If you want to create a linear or radial gradient as background or border, check our [CSS Gradient Generator](#).

Hey! You found this booklet interesting? Support Converting Colors with the new Membership Option!

The pro membership hides all ads, plus gives you double the colors in the color bucket, and more awesome pro features!

[Learn more, Memberships starting at \\$2.50/m!](#)

**Follow me
on Twitter!**

@ConvertingColor