

Converting Colors

HunterLab(61.3742, 2.8151,
14.6396)

Have a look what the booklet for
HunterLab(61.3742, 2.8151,
14.6396) contains.

HunterLab(61.3742, 2.8151, 14.6396)	3
<i>Conversions</i>	4
<i>Details</i>	6
<i>Harmonies</i>	12
<i>Previews</i>	24
<i>Color Blindness Simulation</i>	28
<i>CSS Examples</i>	31

Color

**HunterLab(61.3742, 2.8151,
14.6396)**

Conversions

Conversions Part 1

Format	Color
Hex	BCA08A
RGB	188, 160, 138
RGB Percent	74%, 63%, 54%
CMY	0.2627, 0.3725, 0.4588
CMYK	0.00, 0.15, 0.27, 0.26
HSL	26°, 27%, 64%
HSV	26°, 27%, 74%
XYZ	37.8973, 37.6679, 29.3179
YIQ	165.8640, 23.7500, -0.9060

Conversions

Conversions Part 2

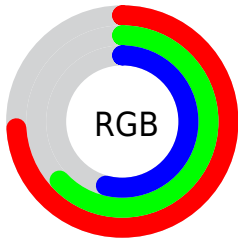
Format	Color
R _Y B	188, 177, 138
Decimal	12361866
CIE Lab	67.78, 6.91, 15.29
CIE LCh	68, 16.781, 65.691
Yxy	37.6696, 0.3613, 0.3591
Android (android.graphics.Color)	4290551946 (0xFFBCA08A)
YUV	165.8640, -13.7370, 19.4133
Hunter-Lab	61.3742, 2.8151, 14.6396

Details

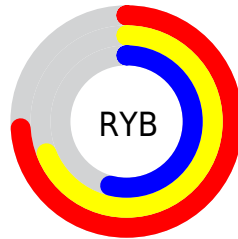
The HunterLab color $61.3742, 2.8151, 14.6396$ is a light color, and the websafe version is hex $CC9999$. A complement of this color would be $60.2540, -7.1082, -9.8121$, and the grayscale version is $61.7446, -3.2945, 3.3547$.

A 20% lighter version of the original color is $84.7201, 2.0922, 17.7458$, and $40.8781, 2.9652, 11.8499$ is the 20% darker color. If you saturate the color by 10%, you get $58.0299, 5.8132, 17.9630$, and if you desaturate by 10%, it is $64.8598, 0.1083, 10.8905$.

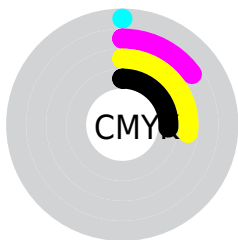
Distribution



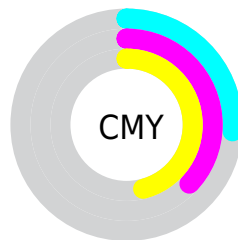
- Red (74%)
- Green (63%)
- Blue (54%)



- Red (74%)
- Yellow (69%)
- Blue (54%)



- Cyan (0%)
- Magenta (15%)
- Yellow (27%)
- Black (26%)



- Cyan (26%)
- Magenta (37%)
- Yellow (46%)

Brightness & Saturation Gradients

These gradients show how the HunterLab color 61.3742, 2.8151, 14.6396 changes by changing the brightness by 10 percent. The first figure shows a shift by +10% for each color and the second figure -10%.

Similar to the brightness gradients but the following saturation gradients show a change of the HunterLab color 61.3742, 2.8151, 14.6396 by changing the saturation by 10% instead.

■ 61.3742, 2.8151,
14.6396

■ 61.3742, 2.8151,
14.6396

183.3578, -1.1067,
27.1967

■ 50.7212, 3.0217,
13.2080

■ 84.6177, 2.2350,
17.4498

■ 40.7665, 3.1689,
11.7432

■ 97.1385, 1.8747,
18.8402

■ 31.5646, 3.2462,
10.2295

■ 110.2224, 1.4713,
20.2269

■ 23.1832, 3.2418,
8.6405

123.8461, 1.0278,
21.6133

■ 15.7121, 3.1383,
6.9315

137.9890, 0.5463,
23.0018

■ 9.2785, 2.9121,
6.4949

152.6327, 0.0290,

0.0000, NaN, NaN

24.3942

0.0000, NaN, NaN

167.7607, -0.5226,
25.7921

0.0000, NaN, NaN

■ 61.3742, 2.8151,
14.6396

■ 61.3742, 2.8151,
14.6396

■ 58.0299, 5.8132,
17.9630

■ 64.8598, 0.1083,
10.8905

■ 54.8366, 9.1259,
20.8037

■ 68.4701, -2.3214,
6.7618

■ 51.8112, 12.7612,
23.1051

■ 72.1952, -4.4978,
2.2978

■ 48.9704, 16.7178,
24.8096

■ 76.0255, -6.4428,
-2.4641

■ 46.3318, 20.9770,
25.8672

■ 79.9525, -8.1771,
-7.4916

■ 43.9128, 25.4948,
26.2480

■ 83.9684, -9.7203,
-12.7567

■ 41.7277, 30.1873,
25.9797

■ 87.5106, -14.1875,
-10.4233

■ 41.0334, 31.7769,
25.8409

■ 90.9634, -19.4583,
-5.9548

■ 94.4817, -24.6552,
-1.5815

Harmonies

Analogous

The Analogous color harmony consists of three colors that are next to each other on the color wheel.



61.3756, 8.9628, 10.8637



61.3742, 2.8151, 14.6396



61.3756, -4.7109, 15.5549

Triad

The Triadic color harmony groups three colors that are evenly spaced from another and form a triangle on the color wheel.



61.3756, 2.8130, 14.6405



61.3756, -17.0658, 1.9557



61.3756, 5.4228, -8.9665

Complementary

The Complementary color scheme is a pair of colors which are on the opposite of each other on the color wheel.



61.3742, 2.8151, 14.6396



60.2540, -7.1082, -9.8121

Split Complementary

Split-complementary colors differ from the complementary color scheme. The scheme consists of three colors, the original color and two neighbors of the complement color.



61.3756, -1.8321, -12.0504



61.3742, 2.8151, 14.6396



61.3756, -14.6290, -5.2741

Square

The Square scheme is like the rectangle color scheme, but the four colors are evenly spaced on the color wheel.



61.3756, 2.8130, 14.6405



61.3756, -15.9555, 8.7582



61.3756, -9.1406, -10.6237



61.3756, 10.5198, -2.6203

Rectangle

The Rectangle color scheme consists of four colors that form a rectangle on the color wheel.



61.3742, 2.8151, 14.6396



61.3756, -9.4454, 14.5279



61.3756, -9.1406, -10.6237



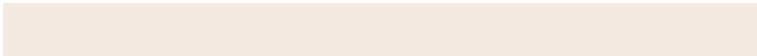
61.3756, 3.1427, -10.4519

Sweetspot

The Sweet Spot groups the original color and five complimentary colors.



61.3756, 2.8130, 14.6405



91.4199, -2.6457, 9.9873



56.2442, 18.1771, -3.2239



42.0507, -1.0045, 5.0298



97.7295, -5.2146, 5.3098



44.2712, -2.3622, 2.4053

Same Dimension

The Same Dimension uses a secret algorithm to generate beautiful new colors.



61.3756, 2.8130, 14.6405



79.9319, 6.1319, 22.4353



68.6186, -9.2501, 21.3443



31.9510, -0.7942, 3.7589



34.0687, 25.6984, 21.4428



7.6488, 3.0217, 4.7661

Inverse Universe

The Inverse Universe completely reimagines the original color for something new.



60.2540, -7.1082, -9.8121



78.0973, -10.0444, -17.5139



53.0874, 5.0525, -20.3352



31.7609, -2.4848, -0.3951



30.8833, 2.0937, -43.1213



7.0844, -1.1952, -6.2747

Previews

White Background



This preview shows how the HunterLab color 61.3742, 2.8151, 14.6396 looks on a white background.

Color Contrast Check

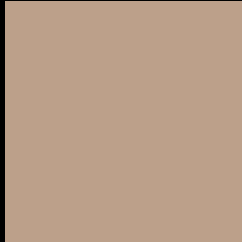
Large Text (above 18pt) WCAG AA × Fail

Any Text WCAG AA × Fail

Large Text (above 18pt) WCAG AAA × Fail

Any Text WCAG AAA × Fail

Black Background



This preview shows how the HunterLab color 61.3742, 2.8151, 14.6396 looks on a black background.

Color Contrast Check

Large Text (above 18pt) WCAG AA ✓ Pass

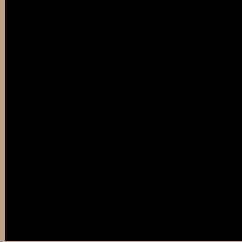
Any Text WCAG AA ✓ Pass

Large Text (above 18pt) WCAG AAA ✓ Pass

Any Text WCAG AAA ✓ Pass

If you want to check with other color combinations, try the [Color Contrast Checker](#).

HunterLab 61.3742, 2.8151, 14.6396 Background



This preview shows how black text looks on a background with the HunterLab color 61.3742, 2.8151, 14.6396.



This preview shows how white text looks on a background with the HunterLab color 61.3742, 2.8151,

Color Blindness Simulation

Color vision deficiency is a very complex topic, and I could not describe the different causes any better than Wikipedia does, so if you want to learn more, you should check out their [article about color blindness](#).

Dichromacy



Original Color

61.3742, 2.8151, 14.6396

Protanopia

61.4836, -4.1134, 13.8882

Deuteranopia

61.4065, 4.3695, 14.6989



Tritanopia

61.3844, 10.1794, 2.2212

Trichromacy



Original Color

61.3742, 2.8151, 14.6396

Protanomaly

61.3532, -1.6185, 14.1725

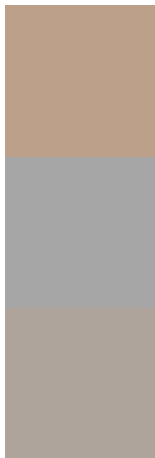
Deuteranomaly

61.3012, 4.0161, 14.5880

Tritanomaly

61.2335, 7.6310, 6.9795

Monochromacy



Original Color

61.3742, 2.8151, 14.6396

Achromatopsia

61.7516, -3.2949, 3.3551

Achromatomaly

61.6035, -1.3735, 7.6644

CSS Examples

Text

The CSS property to change the color of the text to HunterLab 61.3742, 2.8151, 14.6396 is called "color". The color property can be set on classes, ids or directly on the HTML element.

This example shows how text in the color `rgb(188, 160, 138)` looks like.

```
.text, #text, p{  
    color:rgb(188, 160, 138)  
}
```

If you want to add a text shadow in that color use the text-shadow property, you can generate a text shadow directly with our [CSS Text Shadow Generator](#).

Here you see how black text with a 4 pixel rgb(188, 160, 138) colored shadow looks like.

```
.shadow{ text-shadow: 4px 4px 2px rgb(188, 160, 138) }
```

Border

The CSS property to change the border of an element to HunterLab 61.3742, 2.8151, 14.6396 is called "border". The border property can be set on classes, ids or directly on the HTML element.

This example shows the color as border, it can be applied via the CSS property "border" or "border-color".

```
.border, #border, table{ border:4px solid rgb(188, 160, 138) }
```


If only the border color should be changed use the property `border-color`.

```
.border{ border-color:rgb(188, 160, 138) }
```

If you want to add a box shadow in that color use:

Here you see how a box with a 4 pixel `rgb(188, 160, 138)` colored shadow looks like.

```
.boxshadow{ -moz-box-shadow:4px 4px 4px  
4px rgb(188, 160, 138); -webkit-box-  
shadow:4px 4px 4px 4px rgb(188, 160, 138);  
box-shadow:4px 4px 4px 4px rgb(188, 160,  
138) }
```

Background

The CSS property to change the background color of an element to HunterLab 61.3742, 2.8151, 14.6396 is called "background". The background property can be set on classes, ids or directly on the HTML element.

```
.background, #background, body{  
background: rgb(188, 160, 138) }
```

If only the background color should be changed can be used:

```
.background{ background-color: rgb(188,  
160, 138) }
```

This example shows the color as background, it is applied via the CSS property "background".

To optimize and compress your CSS code, you can use our [online CSS compressor and optimizer](#) based on csstidy. If you want to create a linear or radial gradient as background or border, check our [CSS Gradient Generator](#).

Hey! You found this booklet interesting? Support Converting Colors with the new Membership Option!

The pro membership hides all ads, plus gives you double the colors in the color bucket, and more awesome pro features!

[Learn more, Memberships starting at \\$2.50/m!](#)

**Follow me
on Twitter!**

@ConvertingColor