

Converting Colors

HunterLab(61.3940, 48.7215,
11.7644)

Have a look what the booklet for
HunterLab(61.3940, 48.7215,
11.7644) contains.

HunterLab(61.4926, 48.5374, 11.7278)	3
<i>Conversions</i>	4
<i>Details</i>	6
<i>Harmonies</i>	12
<i>Previews</i>	24
<i>Color Blindness Simulation</i>	28
<i>CSS Examples</i>	31

Color

**HunterLab(61.4926, 48.5374,
11.7278)**

Conversions

Conversions Part 1

Format	Color
Hex	FF7C94
RGB	255, 124, 148
RGB Percent	100%, 49%, 58%
CMY	0.0000, 0.5137, 0.4196
CMYK	0.00, 0.51, 0.42, 0.00
HSL	349°, 100%, 74%
HSV	349°, 51%, 100%
XYZ	53.7929, 37.8134, 32.4804
YIQ	165.9050, 70.3720, 35.2360

Conversions

Conversions Part 2

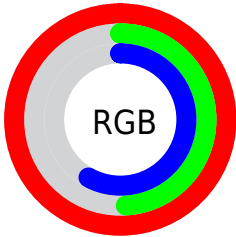
Format	Color
RYB	255, 124, 148
Decimal	16743572
CIELab	67.88, 52.02, 10.99
CIElCh	68, 53.167, 11.933
Yxy	37.8154, 0.4335, 0.3047
Android (android.graphics.Color)	4294933652 (0xFFFF7C94)
YUV	165.9050, -8.8272, 78.1363
Hunter-Lab	61.4926, 48.5374, 11.7278

Details

The HunterLab color **61.4926, 48.5374, 11.7278** is a light color, and the websafe version is hex **FF6699**. A complement of this color would be **90.3191, -42.4474, 5.2793**, and the grayscale version is **61.7288, -3.2937, 3.3538**.

A 20% lighter version of the original color is **76.2672, 26.2030, 4.0154**, and **40.7522, 45.1113, 9.0894** is the 20% darker color. If you saturate the color by 10%, you get **56.2383, 58.6869, 14.4511**, and if you desaturate by 10%, it is **67.6565, 37.8252, 9.5308**.

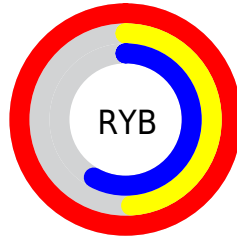
Distribution



Red (100%)

Green (49%)

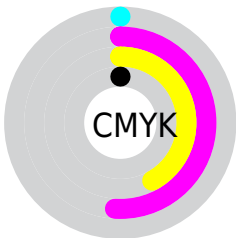
Blue (58%)



Red (100%)

Yellow (49%)

Blue (58%)

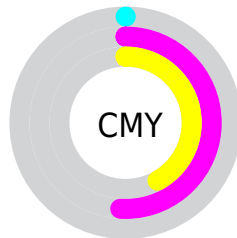


Cyan (0%)

Magenta (51%)

Yellow (42%)

Black (0%)



Cyan (0%)

Magenta (51%)

Yellow (42%)

Brightness & Saturation Gradients

These gradients show how the HunterLab color 61.4926, 48.5374, 11.7278 changes by changing the brightness by 10 percent. The first figure shows a shift by +10% for each color and the second figure -10%.

Similar to the brightness gradients but the following saturation gradients show a change of the HunterLab color 61.4926, 48.5374, 11.7278 by changing the saturation by 10% instead.

61.4926, 48.5374,
11.7278

61.4926, 48.5374,
11.7278

183.5285, 59.6321,
22.5512

50.8325, 46.8234,
10.5506

84.7497, 51.6305,
14.0814

40.8700, 45.0039,
9.3623

97.2767, 53.0274,
15.2632

31.6597, 43.0850,
8.1540

110.3666, 54.3309,
16.4521

23.2690, 41.1039,
6.9089

123.9960, 55.5467,
17.6498

15.7874, 39.1785,
5.5980

138.1444, 56.6800,
18.8577

9.3426, 37.7161,
5.3860

152.7934, 57.7359,

0.0000, INF, NaN

20.0768

0.0000, NaN, NaN

167.9264, 58.7186,
21.3078

0.0000, NaN, NaN

■ 61.4926, 48.5374,
11.7278

■ 61.4926, 48.5374,
11.7278

■ 56.2383, 58.6869,
14.4511

■ 67.6565, 37.8252,
9.5308

■ 52.0325, 67.5797,
17.6012

■ 74.5827, 27.0288,
7.8592

■ 48.9876, 74.3682,
20.9564

■ 82.1472, 16.3999,
6.6678

■ 47.1297, 78.3823,
24.1822

■ 90.2465, 6.0519,
5.8922

■ 46.3280, 79.7760,
26.5415

■ 98.7976, -3.9851,
5.4674

100.0000, -5.3358,
5.4332

Harmonies

Analogous

The Analogous color harmony consists of three colors that are next to each other on the color wheel.



61.4942, 46.8715, -11.8373



61.4926, 48.5374, 11.7278



61.4942, 34.8357, 26.0056

Triad

The Triadic color harmony groups three colors that are evenly spaced from another and form a triangle on the color wheel.



61.4942, 48.5334, 11.7291



61.4942, -31.1170, 27.8221



61.4942, -16.9168, -54.5160

Complementary

The Complementary color scheme is a pair of colors which are on the opposite of each other on the color wheel.



61.4926, 48.5374, 11.7278



90.3191, -42.4474, 5.2793

Split Complementary

Split-complementary colors differ from the complementary color scheme. The scheme consists of three colors, the original color and two neighbors of the complement color.



61.4942, -33.9140, -33.6856



61.4926, 48.5374, 11.7278



61.4942, -41.2072, 15.4360

Square

The Square scheme is like the rectangle color scheme, but the four colors are evenly spaced on the color wheel.



61.4942, 48.5334, 11.7291



61.4942, -12.5142, 32.6229



61.4942, -42.1460, -6.4106



61.4942, 6.5239, -56.7410

Rectangle

The Rectangle color scheme consists of four colors that form a rectangle on the color wheel.



61.4926, 48.5374, 11.7278



61.4942, 19.9026, 30.8030



61.4942, -42.1460, -6.4106



61.4942, -23.4752, -49.1714

Sweetspot

The Sweet Spot groups the original color and five complimentary colors.



61.4942, 48.5334, 11.7291



87.2499, 9.7732, 6.1299



62.1479, 58.4269, -50.9389



39.5741, 5.5299, 2.9102

0.0000, NaN, NaN



46.2646, -2.4686, 2.5136

Same Dimension

The Same Dimension uses a secret algorithm to generate beautiful new colors.



61.4942, 48.5334, 11.7291



55.9407, 59.2935, 14.6388



70.5707, 24.2724, 27.8875



42.4752, 1.9229, 2.6779



33.5117, 57.7524, 18.8434



10.5232, 18.2661, 4.9024

Inverse Universe

The Inverse Universe completely reimagines the original color for something new.



61.4942, 48.5334, 11.7291



55.9407, 59.2935, 14.6388



77.0426, -18.3117, -25.6548



42.4752, 1.9229, 2.6779



33.5117, 57.7524, 18.8434



10.5232, 18.2661, 4.9024

Previews

White Background



This preview shows how the HunterLab color 61.4926, 48.5374, 11.7278 looks on a white background.

Color Contrast Check

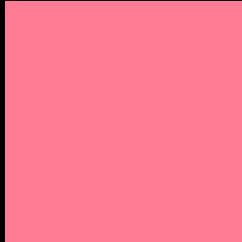
Large Text (above 18pt) WCAG AA × Fail

Any Text WCAG AA × Fail

Large Text (above 18pt) WCAG AAA × Fail

Any Text WCAG AAA × Fail

Black Background



This preview shows how the HunterLab color 61.4926, 48.5374, 11.7278 looks on a black background.

Color Contrast Check

Large Text (above 18pt) WCAG AA ✓ Pass

Any Text WCAG AA ✓ Pass

Large Text (above 18pt) WCAG AAA ✓ Pass

Any Text WCAG AAA ✓ Pass

If you want to check with other color combinations, try the [Color Contrast Checker](#).

HunterLab 61.4926, 48.5374, 11.7278 Background



This preview shows how black text looks on a background with the HunterLab color 61.4926, 48.5374, 11.7278.



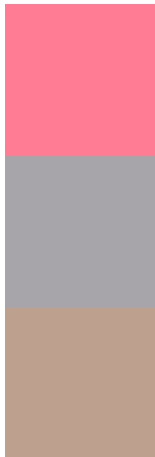
This preview shows how white text looks on a background with the HunterLab color 61.4926, 48.5374,

11.7278.

Color Blindness Simulation

Color vision deficiency is a very complex topic, and I could not describe the different causes any better than Wikipedia does, so if you want to learn more, you should check out their [article about color blindness](#).

Dichromacy



Original Color

61.4926, 48.5374, 11.7278

Protanopia

61.6669, -1.8387, 1.4023

Deuteranopia

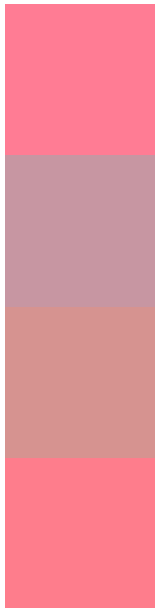
61.6780, 4.0304, 13.4759



Tritanopia

61.4344, 45.6324, 16.5328

Trichromacy



Original Color

61.4926, 48.5374, 11.7278

Protanomaly

60.4677, 15.1573, 4.0086

Deuteranomaly

60.9731, 19.7639, 12.2601

Tritanomaly

61.3445, 46.6925, 14.6377

Monochromacy



Original Color

61.4926, 48.5374, 11.7278

Achromatopsia

61.7516, -3.2949, 3.3551

Achromatomaly

60.5328, 13.8288, 5.4147

CSS Examples

Text

The CSS property to change the color of the text to HunterLab 61.4926, 48.5374, 11.7278 is called "color". The color property can be set on classes, ids or directly on the HTML element.

This example shows how text in the color `rgb(255, 124, 148)` looks like.

```
.text, #text, p{  
    color:rgb(255, 124, 148)  
}
```

If you want to add a text shadow in that color use the text-shadow property, you can generate a text shadow directly with our [CSS Text Shadow Generator](#).

Here you see how black text with a 4 pixel rgb(255, 124, 148) colored shadow looks like.

```
.shadow{ text-shadow: 4px 4px 2px rgb(255, 124, 148) }
```

Border

The CSS property to change the border of an element to HunterLab 61.4926, 48.5374, 11.7278 is called "border". The border property can be set on classes, ids or directly on the HTML element.

This example shows the color as border, it can be applied via the CSS property "border" or "border-color".

```
.border, #border, table{ border:4px solid rgb(255, 124, 148) }
```


If only the border color should be changed use the property `border-color`.

```
.border{ border-color:rgb(255, 124, 148) }
```

If you want to add a box shadow in that color use:

Here you see how a box with a 4 pixel `rgb(255, 124, 148)` colored shadow looks like.

```
.boxshadow{ -moz-box-shadow:4px 4px 4px  
4px rgb(255, 124, 148); -webkit-box-  
shadow:4px 4px 4px 4px rgb(255, 124, 148);  
box-shadow:4px 4px 4px 4px rgb(255, 124,  
148) }
```

Background

The CSS property to change the background color of an element to HunterLab 61.4926, 48.5374, 11.7278 is called "background". The background property can be set on classes, ids or directly on the HTML element.

```
.background, #background, body{  
background: rgb(255, 124, 148) }
```

If only the background color should be changed can be used:

```
.background{ background-color: rgb(255,  
124, 148) }
```

This example shows the color as background, it is applied via the CSS property "background".

To optimize and compress your CSS code, you can use our [online CSS compressor and optimizer](#) based on csstidy. If you want to create a linear or radial gradient as background or border, check our [CSS Gradient Generator](#).

Hey! You found this booklet interesting? Support Converting Colors with the new Membership Option!

The pro membership hides all ads, plus gives you double the colors in the color bucket, and more awesome pro features!

[Learn more, Memberships starting at \\$2.50/m!](#)

**Follow me
on Twitter!**

@ConvertingColor