

Converting Colors

HunterLab(61.4495, 7.7080,
12.1531)

Have a look what the booklet for
HunterLab(61.4495, 7.7080,
12.1531) contains.

HunterLab(61.4495, 7.7080, 12.1531)	3
<i>Conversions</i>	4
<i>Details</i>	6
<i>Harmonies</i>	12
<i>Previews</i>	24
<i>Color Blindness Simulation</i>	28
<i>CSS Examples</i>	31

Color

**HunterLab(61.4495, 7.7080,
12.1531)**

Conversions

Conversions Part 1

Format	Color
Hex	C39D91
RGB	195, 157, 145
RGB Percent	76%, 62%, 57%
CMY	0.2353, 0.3843, 0.4314
CMYK	0.00, 0.19, 0.26, 0.24
HSL	14°, 29%, 67%
HSV	14°, 26%, 76%
XYZ	39.6735, 37.7604, 31.9856
YIQ	166.9940, 26.5000, 4.3240

Conversions

Conversions Part 2

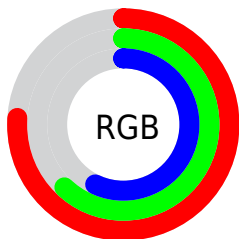
Format	Color
R_{YB}	195, 161, 145
Decimal	12819857
CIE _{Lab}	67.84, 12.27, 11.61
CIE _{LCh}	68, 16.894, 43.399
Yxy	37.7621, 0.3626, 0.3451
Android (android.graphics.Color)	4291009937 (0xFFC39D91)
YUV	166.9940, -10.8430, 24.5613
Hunter-Lab	61.4495, 7.7080, 12.1531

Details

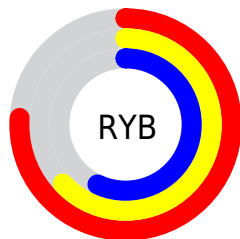
The HunterLab color **61.4495, 7.7080, 12.1531** is a light color, and the websafe version is hex **CC9999**. A complement of this color would be **66.2010, -12.1493, -5.6601**, and the grayscale version is **62.1977, -3.3187, 3.3793**.

A 20% lighter version of the original color is **84.7974, 7.3700, 14.6012**, and **40.8775, 7.2169, 9.6119** is the 20% darker color. If you saturate the color by 10%, you get **57.0063, 12.7765, 14.9963**, and if you desaturate by 10%, it is **66.1351, 2.9420, 9.1036**.

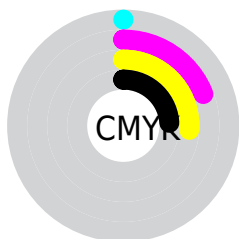
Distribution



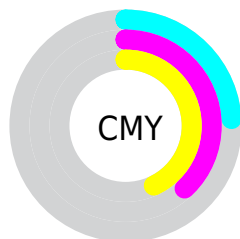
- Red (76%)
- Green (62%)
- Blue (57%)



- Red (76%)
- Yellow (63%)
- Blue (57%)



- Cyan (0%)
- Magenta (19%)
- Yellow (26%)
- Black (24%)



- Cyan (24%)
- Magenta (38%)
- Yellow (43%)

Brightness & Saturation Gradients

These gradients show how the HunterLab color 61.4495, 7.7080, 12.1531 changes by changing the brightness by 10 percent. The first figure shows a shift by +10% for each color and the second figure -10%.

Similar to the brightness gradients but the following saturation gradients show a change of the HunterLab color 61.4495, 7.7080, 12.1531 by changing the saturation by 10% instead.

■ 61.4495, 7.7080,
12.1531

■ 61.4495, 7.7080,
12.1531

183.4662, 5.7493,
23.2204

■ 50.7919, 7.6460,
10.9399

■ 84.7015, 7.6255,
14.5706

■ 40.8322, 7.5086,
9.7129

■ 97.2263, 7.4978,
15.7817

■ 31.6250, 7.2821,
8.4617

110.3140, 7.3179,
16.9985

■ 23.2377, 6.9505,
7.1684

123.9413, 7.0896,
18.2228

■ 15.7599, 6.4914,
5.8015

138.0877, 6.8161,
19.4562

■ 9.3192, 5.8732,
5.6701

152.7348, 6.5000,

0.0000, INF, NaN

20.6997

0.0000, NaN, NaN

167.8659, 6.1438,
21.9542

0.0000, NaN, NaN

■ 61.4495, 7.7080,
12.1531

■ 61.4495, 7.7080,
12.1531

■ 57.0063, 12.7765,
14.9963

■ 66.1351, 2.9420,
9.1036

■ 52.8363, 18.1587,
17.5737

■ 71.0295, -1.5341,
5.8879

■ 48.9817, 23.8299,
19.8139

■ 76.1093, -5.7487,
2.5390

■ 45.4890, 29.7235,
21.6289

■ 81.3541, -9.7296,
-0.9194

■ 42.4082, 35.7086,
22.9224

■ 86.7466, -13.5042,
-4.4697

■ 39.7889, 41.5735,
23.6084

■ 92.0233, -18.4977,
-4.5747

■ 37.6725, 47.0228,
23.6526

■ 95.0485, -23.0147,
-0.8495

■ 36.9058, 49.1478,
23.6016

Harmonies

Analogous

The Analogous color harmony consists of three colors that are next to each other on the color wheel.



61.4509, 11.5969, 6.4813



61.4495, 7.7080, 12.1531



61.4509, 0.9511, 15.2363

Triad

The Triadic color harmony groups three colors that are evenly spaced from another and form a triangle on the color wheel.



61.4509, 7.7058, 12.1541



61.4509, -16.6749, 7.1874



61.4509, 0.1427, -11.7809

Complementary

The Complementary color scheme is a pair of colors which are on the opposite of each other on the color wheel.



61.4495, 7.7080, 12.1531



66.2010, -12.1493, -5.6601

Split Complementary

Split-complementary colors differ from the complementary color scheme. The scheme consists of three colors, the original color and two neighbors of the complement color.



61.4509, -7.4038, -11.5318



61.4495, 7.7080, 12.1531



61.4509, -16.8677, 0.0340

Square

The Square scheme is like the rectangle color scheme, but the four colors are evenly spaced on the color wheel.



61.4509, 7.7058, 12.1541



61.4509, -13.0083, 12.6166



61.4509, -13.5485, -6.9987



61.4509, 7.0893, -7.6428

Rectangle

The Rectangle color scheme consists of four colors that form a rectangle on the color wheel.



61.4495, 7.7080, 12.1531



61.4509, -4.1466, 15.6719



61.4509, -13.5485, -6.9987



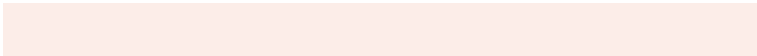
61.4509, -2.4130, -12.2212

Sweetspot

The Sweet Spot groups the original color and five complimentary colors.



61.4509, 7.7058, 12.1541



93.4066, -0.5995, 8.9666



59.4022, 19.8901, -7.9457



43.2377, 0.1445, 4.5073

0.0000, NaN, NaN



46.2646, -2.4686, 2.5136

Same Dimension

The Same Dimension uses a secret algorithm to generate beautiful new colors.



61.4509, 7.7058, 12.1541



78.7232, 14.2249, 18.5253



68.5320, -4.6071, 18.9724



32.3447, 0.0470, 3.3205



29.9392, 39.0581, 19.1322



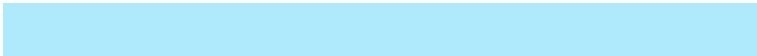
7.0610, 5.8040, 4.4526

Inverse Universe

The Inverse Universe completely reimagines the original color for something new.



66.2010, -12.1493, -5.6601



86.4469, -18.1678, -10.4707



58.7605, -0.1194, -15.8893



33.1744, -3.4036, 0.2138



40.6203, -12.3251, -24.1655



9.0229, -3.3592, -4.0262

Previews

White Background



This preview shows how the HunterLab color 61.4495, 7.7080, 12.1531 looks on a white background.

Color Contrast Check

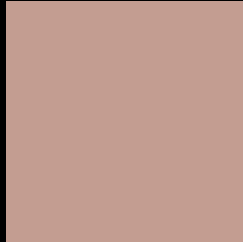
Large Text (above 18pt) WCAG AA × Fail

Any Text WCAG AA × Fail

Large Text (above 18pt) WCAG AAA × Fail

Any Text WCAG AAA × Fail

Black Background



This preview shows how the HunterLab color 61.4495, 7.7080, 12.1531 looks on a black background.

Color Contrast Check

Large Text (above 18pt) WCAG AA ✓ Pass

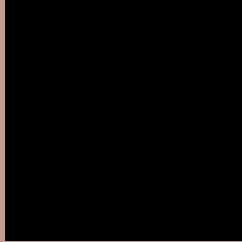
Any Text WCAG AA ✓ Pass

Large Text (above 18pt) WCAG AAA ✓ Pass

Any Text WCAG AAA ✓ Pass

If you want to check with other color combinations, try the [Color Contrast Checker](#).

HunterLab 61.4495, 7.7080, 12.1531 Background



This preview shows how black text looks on a background with the HunterLab color 61.4495, 7.7080, 12.1531.



This preview shows how white text looks on a background with the HunterLab color 61.4495, 7.7080,

Color Blindness Simulation

Color vision deficiency is a very complex topic, and I could not describe the different causes any better than Wikipedia does, so if you want to learn more, you should check out their [article about color blindness](#).

Dichromacy



Original Color

61.4495, 7.7080, 12.1531

Protanopia

61.5230, -3.5265, 10.4467

Deuteranopia

61.3673, 4.5790, 12.0131



Tritanopia

61.4286, 12.9881, 3.2589

Trichromacy



Original Color

61.4495, 7.7080, 12.1531

Protanomaly

61.3857, 0.4211, 10.7725

Deuteranomaly

61.2980, 5.7829, 11.9622

Tritanomaly

61.3572, 10.9064, 6.7411

Monochromacy



Original Color

61.4495, 7.7080, 12.1531

Achromatopsia

62.1634, -3.3169, 3.3775

Achromatomaly

61.6804, 0.5439, 6.4870

CSS Examples

Text

The CSS property to change the color of the text to HunterLab 61.4495, 7.7080, 12.1531 is called "color". The color property can be set on classes, ids or directly on the HTML element.

This example shows how text in the color `rgb(195, 157, 145)` looks like.

```
.text, #text, p{  
    color:rgb(195, 157, 145)  
}
```

If you want to add a text shadow in that color use the text-shadow property, you can generate a text shadow directly with our [CSS Text Shadow Generator](#).

Here you see how black text with a 4 pixel rgb(195, 157, 145) colored shadow looks like.

```
.shadow{ text-shadow: 4px 4px 2px rgb(195, 157, 145) }
```

Border

The CSS property to change the border of an element to HunterLab 61.4495, 7.7080, 12.1531 is called "border". The border property can be set on classes, ids or directly on the HTML element.

This example shows the color as border, it can be applied via the CSS property "border" or "border-color".

```
.border, #border, table{ border:4px solid rgb(195, 157, 145) }
```


If only the border color should be changed use the property border-color.

```
.border{ border-color:rgb(195, 157, 145) }
```

If you want to add a box shadow in that color use:

Here you see how a box with a 4 pixel rgb(195, 157, 145) colored shadow looks like.

```
.boxshadow{ -moz-box-shadow:4px 4px 4px  
4px rgb(195, 157, 145); -webkit-box-  
shadow:4px 4px 4px 4px rgb(195, 157, 145);  
box-shadow:4px 4px 4px 4px rgb(195, 157,  
145) }
```

Background

The CSS property to change the background color of an element to HunterLab 61.4495, 7.7080, 12.1531 is called "background". The background property can be set on classes, ids or directly on the HTML element.

```
.background, #background, body{  
background: rgb(195, 157, 145) }
```

If only the background color should be changed can be used:

```
.background{ background-color: rgb(195,  
157, 145) }
```

This example shows the color as background, it is applied via the CSS property "background".

To optimize and compress your CSS code, you can use our [online CSS compressor and optimizer](#) based on csstidy. If you want to create a linear or radial gradient as background or border, check our [CSS Gradient Generator](#).

Hey! You found this booklet interesting? Support Converting Colors with the new Membership Option!

The pro membership hides all ads, plus gives you double the colors in the color bucket, and more awesome pro features!

[Learn more, Memberships starting at \\$2.50/m!](#)

**Follow me
on Twitter!**

@ConvertingColor