

Converting Colors

HunterLab(61.4637, 9.9018,
17.3337)

Have a look what the booklet for
HunterLab(61.4637, 9.9018,
17.3337) contains.

HunterLab(61.4637, 9.9018, 17.3337)	3
<i>Conversions</i>	4
<i>Details</i>	6
<i>Harmonies</i>	12
<i>Previews</i>	24
<i>Color Blindness Simulation</i>	28
<i>CSS Examples</i>	31

Color

**HunterLab(61.4637, 9.9018,
17.3337)**

Conversions

Conversions Part 1

Format	Color
Hex	CB9B83
RGB	203, 155, 131
RGB Percent	80%, 61%, 51%
CMY	0.2039, 0.3921, 0.4863
CMYK	0.00, 0.24, 0.35, 0.20
HSL	20°, 41%, 65%
HSV	20°, 35%, 80%
XYZ	40.4467, 37.7779, 26.6328
YIQ	166.6160, 36.3120, 2.7120

Conversions

Conversions Part 2

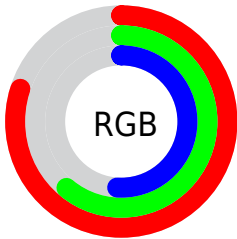
Format	Color
R _Y B	203, 167, 131
Decimal	13343619
CIE Lab	67.86, 14.63, 19.50
CIE LCh	68, 24.381, 53.124
Yxy	37.7796, 0.3857, 0.3603
Android (android.graphics.Color)	4291533699 (0xFFCB9B83)
YUV	166.6160, -17.5587, 31.9088
Hunter-Lab	61.4637, 9.9018, 17.3337

Details

The HunterLab color **61.4637, 9.9018, 17.3337** is a light color, and the websafe version is hex **CC9999**. A complement of this color would be **64.3240, -11.9477, -12.6512**, and the grayscale version is **62.0659, -3.3117, 3.3722**.

A 20% lighter version of the original color is **84.1510, 7.4516, 20.0336**, and **40.8629, 9.1637, 14.0449** is the 20% darker color. If you saturate the color by 10%, you get **57.4693, 14.5876, 20.2412**, and if you desaturate by 10%, it is **65.6847, 5.5500, 14.0280**.

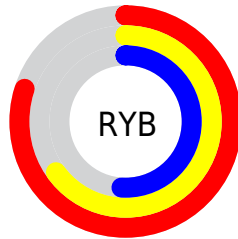
Distribution



Red (80%)

Green (61%)

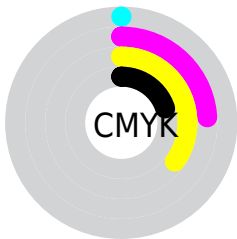
Blue (51%)



Red (80%)

Yellow (65%)

Blue (51%)

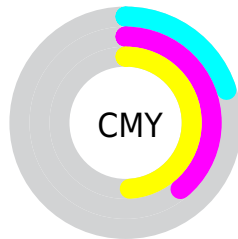


Cyan (0%)

Magenta (24%)

Yellow (35%)

Black (20%)



Cyan (20%)

Magenta (39%)

Yellow (49%)

Brightness & Saturation Gradients

These gradients show how the HunterLab color 61.4637, 9.9018, 17.3337 changes by changing the brightness by 10 percent. The first figure shows a shift by +10% for each color and the second figure -10%.

Similar to the brightness gradients but the following saturation gradients show a change of the HunterLab color 61.4637, 9.9018, 17.3337 by changing the saturation by 10% instead.

■ 61.4637, 9.9018,
17.3337

■ 61.4637, 9.9018,
17.3337

183.4867, 8.7909,
31.6368

■ 50.8052, 9.7247,
15.6450

■ 84.7173, 10.0329,
20.6058

■ 40.8446, 9.4662,
13.9001

■ 97.2429, 10.0054,
22.2065

■ 31.6364, 9.1113,
12.0771

■ 110.3313, 9.9220,
23.7926

■ 23.2480, 8.6429,
10.1405

123.9593, 9.7868,
25.3688

■ 15.7690, 8.0375,
8.0714

138.1063, 9.6033,
26.9387

■ 9.3269, 7.2645,
6.5289

152.7540, 9.3745,

0.0000, INF, NaN

28.5052

0.0000, NaN, NaN

167.8858, 9.1029,
30.0706

0.0000, NaN, NaN

■ 61.4637, 9.9018,
17.3337

■ 61.4637, 9.9018,
17.3337

■ 57.4693, 14.5876,
20.2412

■ 65.6847, 5.5500,
14.0280

■ 53.7257, 19.6161,
22.6752

■ 70.1028, 1.5237,
10.3836

■ 50.2664, 24.9613,
24.5566

■ 74.6982, -2.2030,
6.4531

■ 47.1259, 30.5620,
25.8055

■ 79.4523, -5.6569,
2.2788

■ 44.3397, 36.3051,
26.3593

■ 84.3493, -8.8652,
-2.1052

■ 41.9395, 42.0120,
26.2049

■ 89.3759, -11.8538,
-6.6711

■ 40.9781, 44.4903,
26.0294

■ 93.8722, -18.2770,
-2.2309

■ 95.6224, -20.9166,
-0.1049

Harmonies

Analogous

The Analogous color harmony consists of three colors that are next to each other on the color wheel.



61.4652, 17.3521, 10.7185



61.4637, 9.9018, 17.3337



61.4652, -0.7362, 20.1246

Triad

The Triadic color harmony groups three colors that are evenly spaced from another and form a triangle on the color wheel.



61.4652, 9.8993, 17.3346



61.4652, -22.8612, 5.7007



61.4652, 5.2257, -18.1258

Complementary

The Complementary color scheme is a pair of colors which are on the opposite of each other on the color wheel.



61.4637, 9.9018, 17.3337



64.3240, -11.9477, -12.6512

Split Complementary

Split-complementary colors differ from the complementary color scheme. The scheme consists of three colors, the original color and two neighbors of the complement color.



61.4652, -5.7888, -20.1060



61.4637, 9.9018, 17.3337



61.4652, -21.5103, -5.0712

Square

The Square scheme is like the rectangle color scheme, but the four colors are evenly spaced on the color wheel.



61.4652, 9.8993, 17.3346



61.4652, -19.2685, 14.2137



61.4652, -15.4401, -14.9752



61.4652, 14.5243, -9.9601

Rectangle

The Rectangle color scheme consists of four colors that form a rectangle on the color wheel.



61.4637, 9.9018, 17.3337



61.4652, -8.0013, 19.8602



61.4652, -15.4401, -14.9752



61.4652, 1.5822, -19.5896

Sweetspot

The Sweet Spot groups the original color and five complimentary colors.



61.4652, 9.8993, 17.3346



93.2567, -0.1573, 11.2811



56.7311, 29.3521, -9.1005



42.7687, 0.2369, 5.5396

0.0000, NaN, NaN



46.2646, -2.4686, 2.5136

Same Dimension

The Same Dimension uses a secret algorithm to generate beautiful new colors.



61.4652, 9.8993, 17.3346



75.3212, 17.6940, 25.5242



71.8310, -8.0240, 26.3973



34.3724, -0.3641, 3.7874



32.9198, 34.8513, 20.8952



8.3570, 5.6529, 5.2485

Inverse Universe

The Inverse Universe completely reimagines the original color for something new.



64.3240, -11.9477, -12.6512



79.7776, -16.6051, -21.4437



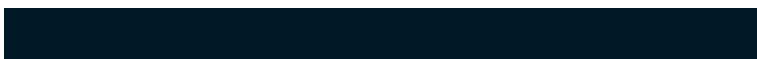
53.6492, 5.8036, -29.2804



34.7452, -3.1834, -0.0963



37.4191, -5.9075, -34.0181



9.2644, -2.4893, -6.2061

Previews

White Background



This preview shows how the HunterLab color 61.4637, 9.9018, 17.3337 looks on a white background.

Color Contrast Check

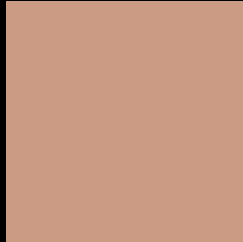
Large Text (above 18pt) WCAG AA × Fail

Any Text WCAG AA × Fail

Large Text (above 18pt) WCAG AAA × Fail

Any Text WCAG AAA × Fail

Black Background



This preview shows how the HunterLab color 61.4637, 9.9018, 17.3337 looks on a black background.

Color Contrast Check

Large Text (above 18pt) WCAG AA ✓ Pass

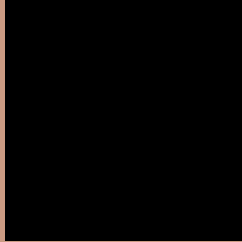
Any Text WCAG AA ✓ Pass

Large Text (above 18pt) WCAG AAA ✓ Pass

Any Text WCAG AAA ✓ Pass

If you want to check with other color combinations, try the [Color Contrast Checker](#).

HunterLab 61.4637, 9.9018, 17.3337 Background



This preview shows how black text looks on a background with the HunterLab color 61.4637, 9.9018, 17.3337.



This preview shows how white text looks on a background with the HunterLab color 61.4637, 9.9018,

Color Blindness Simulation

Color vision deficiency is a very complex topic, and I could not describe the different causes any better than Wikipedia does, so if you want to learn more, you should check out their [article about color blindness](#).

Dichromacy



Original Color

61.4637, 9.9018, 17.3337

Protanopia

61.4832, -4.3035, 15.3486

Deuteranopia

61.5445, 4.4692, 17.6563



Tritanopia

61.5335, 17.1747, 5.2811

Trichromacy



Original Color

61.4637, 9.9018, 17.3337

Protanomaly

61.2579, 0.7753, 15.9307

Deuteranomaly

61.5920, 6.0576, 17.7290

Tritanomaly

61.3759, 14.7150, 9.7940

Monochromacy



Original Color

61.4637, 9.9018, 17.3337

Achromatopsia

62.1634, -3.3169, 3.3775

Achromatomaly

61.8310, 0.7828, 8.7983

CSS Examples

Text

The CSS property to change the color of the text to HunterLab 61.4637, 9.9018, 17.3337 is called "color". The color property can be set on classes, ids or directly on the HTML element.

This example shows how text in the color `rgb(203, 155, 131)` looks like.

```
.text, #text, p{  
    color:rgb(203, 155, 131)  
}
```

If you want to add a text shadow in that color use the text-shadow property, you can generate a text shadow directly with our [CSS Text Shadow Generator](#).

Here you see how black text with a 4 pixel rgb(203, 155, 131) colored shadow looks like.

```
.shadow{ text-shadow: 4px 4px 2px rgb(203, 155, 131) }
```

Border

The CSS property to change the border of an element to HunterLab 61.4637, 9.9018, 17.3337 is called "border". The border property can be set on classes, ids or directly on the HTML element.

This example shows the color as border, it can be applied via the CSS property "border" or "border-color".

```
.border, #border, table{ border:4px solid rgb(203, 155, 131) }
```


If only the border color should be changed use the property `border-color`.

```
.border{ border-color:rgb(203, 155, 131) }
```

If you want to add a box shadow in that color use:

Here you see how a box with a 4 pixel `rgb(203, 155, 131)` colored shadow looks like.

```
.boxshadow{ -moz-box-shadow:4px 4px 4px  
4px rgb(203, 155, 131); -webkit-box-  
shadow:4px 4px 4px 4px rgb(203, 155, 131);  
box-shadow:4px 4px 4px 4px rgb(203, 155,  
131) }
```

Background

The CSS property to change the background color of an element to HunterLab 61.4637, 9.9018, 17.3337 is called "background". The background property can be set on classes, ids or directly on the HTML element.

```
.background, #background, body{  
background: rgb(203, 155, 131) }
```

If only the background color should be changed can be used:

```
.background{ background-color: rgb(203,  
155, 131) }
```

This example shows the color as background, it is applied via the CSS property "background".

To optimize and compress your CSS code, you can use our [online CSS compressor and optimizer](#) based on csstidy. If you want to create a linear or radial gradient as background or border, check our [CSS Gradient Generator](#).

Hey! You found this booklet interesting? Support Converting Colors with the new Membership Option!

The pro membership hides all ads, plus gives you double the colors in the color bucket, and more awesome pro features!

[Learn more, Memberships starting at \\$2.50/m!](#)

**Follow me
on Twitter!**

@ConvertingColor