

Converting Colors

HunterLab(61.4748, 13.8105,
11.8209)

Have a look what the booklet for
HunterLab(61.4748, 13.8105,
11.8209) contains.

HunterLab(61.5117, 13.5267, 11.9281)	3
<i>Conversions</i>	4
<i>Details</i>	6
<i>Harmonies</i>	12
<i>Previews</i>	24
<i>Color Blindness Simulation</i>	28
<i>CSS Examples</i>	31

Color

**HunterLab(61.5117, 13.5267,
11.9281)**

Conversions

Conversions Part 1

Format	Color
Hex	CD9992
RGB	205, 153, 146
RGB Percent	80%, 60%, 57%
CMY	0.1961, 0.4000, 0.4274
CMYK	0.00, 0.25, 0.29, 0.20
HSL	7°, 37%, 69%
HSV	7°, 29%, 80%
XYZ	41.7563, 37.8369, 32.2966
YIQ	167.7500, 33.2390, 8.8470

Conversions

Conversions Part 2

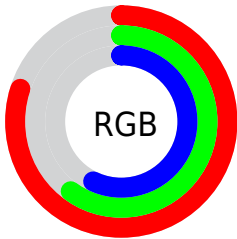
Format	Color
R _Y B	205, 154, 146
Decimal	13474194
CIE Lab	67.90, 18.46, 11.28
CIE LCh	68, 21.630, 31.418
Yxy	37.8387, 0.3732, 0.3382
Android (android.graphics.Color)	4291664274 (0xFFCD9992)
YUV	167.7500, -10.7227, 32.6683
Hunter-Lab	61.5117, 13.5267, 11.9281

Details

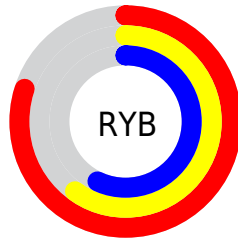
The HunterLab color **61.5117, 13.5267, 11.9281** is a light color, and the websafe version is hex **CC9999**. A complement of this color would be **71.3480, -17.1130, -4.3318**, and the grayscale version is **62.5070, -3.3352, 3.3961**.

A 20% lighter version of the original color is **83.9892, 10.7592, 13.3679**, and **41.0260, 12.7877, 9.5110** is the 20% darker color. If you saturate the color by 10%, you get **56.3769, 20.2819, 14.5127**, and if you desaturate by 10%, it is **67.0102, 7.0834, 9.2816**.

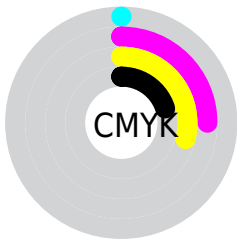
Distribution



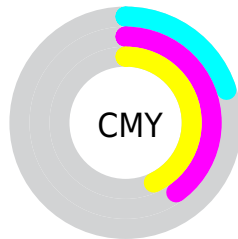
- Red (80%)
- Green (60%)
- Blue (57%)



- Red (80%)
- Yellow (60%)
- Blue (57%)



- Cyan (0%)
- Magenta (25%)
- Yellow (29%)
- Black (20%)





- Cyan (20%)
- Magenta (40%)
- Yellow (43%)

Brightness & Saturation Gradients


These gradients show how the HunterLab color 61.5117, 13.5267, 11.9281 changes by changing the brightness by 10 percent. The first figure shows a shift by +10% for each color and the second figure -10%.


Similar to the brightness gradients but the following saturation gradients show a change of the HunterLab color 61.5117, 13.5267, 11.9281 by changing the saturation by 10% instead.


 61.5117, 13.5267,
11.9281


 61.5117, 13.5267,
11.9281


183.5558, 13.7737,
22.8635

 50.8503, 13.1676,
10.7343


 84.7707, 13.9985,
14.3109

 40.8865, 12.7178,
9.5283


 97.2988, 14.1313,
15.5062

 31.6749, 12.1613,
8.3004


110.3896, 14.2023,
16.7079

 23.2827, 11.4802,
7.0334

124.0199, 14.2164,
17.9179

 15.7995, 10.6513,
5.6972

138.1692, 14.1774,
19.1375

 9.3528, 9.6501,
5.5063

152.8190, 14.0887,

0.0000, INF, NaN

20.3678

0.0000, NaN, NaN

167.9529, 13.9533,
21.6096

0.0000, NaN, NaN

■ 61.5117, 13.5267,
11.9281

■ 61.5117, 13.5267,
11.9281

■ 56.3769, 20.2819,
14.5127

■ 67.0102, 7.0834,
9.2816

■ 51.6643, 27.3103,
16.9758

■ 72.8159, 0.9608,
6.6044

■ 47.4490, 34.4881,
19.2320

■ 78.8882, -4.8649,
3.9172

■ 43.8127, 41.5819,
21.1610

■ 85.1925, -10.4247,
1.2299

■ 40.8365, 48.2237,
22.6188

■ 91.7010, -15.7520,
-1.4528

■ 38.5849, 53.9364,
23.4744

■ 95.7701, -20.3790,
0.0859

■ 37.0777, 58.2231,
23.7516

■ 36.9410, 58.6207,
23.7891

Harmonies

Analogous

The Analogous color harmony consists of three colors that are next to each other on the color wheel.



61.5131, 16.5761, 3.7876



61.5117, 13.5267, 11.9281



61.5131, 5.9319, 17.0268

Triad

The Triadic color harmony groups three colors that are evenly spaced from another and form a triangle on the color wheel.



61.5131, 13.5243, 11.9291



61.5131, -18.8807, 11.2753



61.5131, -2.8213, -17.2540

Complementary

The Complementary color scheme is a pair of colors which are on the opposite of each other on the color wheel.



61.5117, 13.5267, 11.9281



71.3480, -17.1130, -4.3318

Split Complementary

Split-complementary colors differ from the complementary color scheme. The scheme consists of three colors, the original color and two neighbors of the complement color.



61.5131, -11.9902, -14.4379



61.5117, 13.5267, 11.9281



61.5131, -20.9085, 2.9058

Square

The Square scheme is like the rectangle color scheme, but the four colors are evenly spaced on the color wheel.



61.5131, 13.5243, 11.9291



61.5131, -12.7457, 16.6926



61.5131, -18.4639, -6.6800



61.5131, 6.7834, -13.8755

Rectangle

The Rectangle color scheme consists of four colors that form a rectangle on the color wheel.



61.5117, 13.5267, 11.9281



61.5131, -0.4662, 18.4863



61.5131, -18.4639, -6.6800



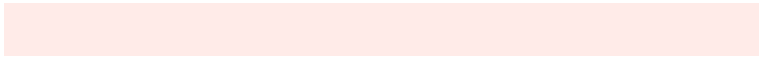
61.5131, -6.0549, -16.9981

Sweetspot

The Sweet Spot groups the original color and five complimentary colors.



61.5131, 13.5243, 11.9291



92.9390, 1.4854, 8.5676



61.3351, 25.5526, -13.4714



42.4817, 1.2108, 4.1979

0.0000, NaN, NaN



46.2646, -2.4686, 2.5136

Same Dimension

The Same Dimension uses a secret algorithm to generate beautiful new colors.



61.5131, 13.5243, 11.9291



74.2901, 23.0305, 17.4842



69.7624, -1.3859, 19.8507



33.8003, 0.6191, 3.1578



29.2728, 45.8376, 18.8402



7.1792, 8.7659, 4.5773

Inverse Universe

The Inverse Universe completely reimagines the original color for something new.



71.3480, -17.1130, -4.3318



89.5797, -24.8595, -7.8545



62.2517, -2.8737, -16.7010



35.3423, -4.1450, 0.6172



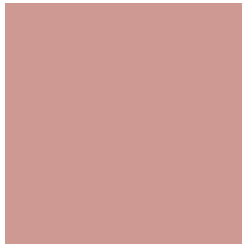
48.2953, -21.1295, -14.7525



11.2653, -5.1739, -2.9117

Previews

White Background



This preview shows how the HunterLab color 61.5117, 13.5267, 11.9281 looks on a white background.

Color Contrast Check

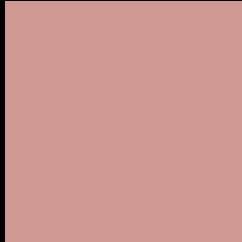
Large Text (above 18pt) WCAG AA × Fail

Any Text WCAG AA × Fail

Large Text (above 18pt) WCAG AAA × Fail

Any Text WCAG AAA × Fail

Black Background



This preview shows how the HunterLab color 61.5117, 13.5267, 11.9281 looks on a black background.

Color Contrast Check

Large Text (above 18pt) WCAG AA ✓ Pass

Any Text WCAG AA ✓ Pass

Large Text (above 18pt) WCAG AAA ✓ Pass

Any Text WCAG AAA ✓ Pass

If you want to check with other color combinations, try the [Color Contrast Checker](#).

HunterLab 61.5117, 13.5267, 11.9281 Background



This preview shows how black text looks on a background with the HunterLab color 61.5117, 13.5267, 11.9281.



This preview shows how white text looks on a background with the HunterLab color 61.5117, 13.5267,

Color Blindness Simulation

Color vision deficiency is a very complex topic, and I could not describe the different causes any better than Wikipedia does, so if you want to learn more, you should check out their [article about color blindness](#).

Dichromacy



Original Color

61.5117, 13.5267, 11.9281

Protanopia

61.6019, -3.0946, 9.3137

Deuteranopia

61.6480, 4.0778, 12.2952



Tritanopia

61.6500, 17.5411, 5.4217

Trichromacy



Original Color

61.5117, 13.5267, 11.9281

Protanomaly

61.5484, 2.5456, 10.1750

Deuteranomaly

61.4495, 7.7080, 12.1531

Tritanomaly

61.6268, 15.7819, 7.9905

Monochromacy



Original Color

61.5117, 13.5267, 11.9281

Achromatopsia

62.5758, -3.3389, 3.3999

Achromatomaly

62.0936, 2.0071, 6.5409

CSS Examples

Text

The CSS property to change the color of the text to HunterLab 61.5117, 13.5267, 11.9281 is called "color". The color property can be set on classes, ids or directly on the HTML element.

This example shows how text in the color `rgb(205, 153, 146)` looks like.

```
.text, #text, p{  
    color:rgb(205, 153, 146)  
}
```

If you want to add a text shadow in that color use the text-shadow property, you can generate a text shadow directly with our [CSS Text Shadow Generator](#).

Here you see how black text with a 4 pixel rgb(205, 153, 146) colored shadow looks like.

```
.shadow{ text-shadow: 4px 4px 2px rgb(205, 153, 146) }
```

Border

The CSS property to change the border of an element to HunterLab 61.5117, 13.5267, 11.9281 is called "border". The border property can be set on classes, ids or directly on the HTML element.

This example shows the color as border, it can be applied via the CSS property "border" or "border-color".

```
.border, #border, table{ border:4px solid rgb(205, 153, 146) }
```


If only the border color should be changed use the property `border-color`.

```
.border{ border-color:rgb(205, 153, 146) }
```

If you want to add a box shadow in that color use:

Here you see how a box with a 4 pixel `rgb(205, 153, 146)` colored shadow looks like.

```
.boxshadow{ -moz-box-shadow:4px 4px 4px  
4px rgb(205, 153, 146); -webkit-box-  
shadow:4px 4px 4px 4px rgb(205, 153, 146);  
box-shadow:4px 4px 4px 4px rgb(205, 153,  
146) }
```

Background

The CSS property to change the background color of an element to HunterLab 61.5117, 13.5267, 11.9281 is called "background". The background property can be set on classes, ids or directly on the HTML element.

```
.background, #background, body{  
background: rgb(205, 153, 146) }
```

If only the background color should be changed can be used:

```
.background{ background-color: rgb(205,  
153, 146) }
```

This example shows the color as background, it is applied via the CSS property "background".

To optimize and compress your CSS code, you can use our [online CSS compressor and optimizer](#) based on csstidy. If you want to create a linear or radial gradient as background or border, check our [CSS Gradient Generator](#).

Hey! You found this booklet interesting? Support Converting Colors with the new Membership Option!

The pro membership hides all ads, plus gives you double the colors in the color bucket, and more awesome pro features!

[Learn more, Memberships starting at \\$2.50/m!](#)

**Follow me
on Twitter!**

@ConvertingColor