

Converting Colors

HunterLab(61.5089, 8.6373,
13.0807)

Have a look what the booklet for
HunterLab(61.5089, 8.6373,
13.0807) contains.

HunterLab(61.4539, 9.0326, 12.9542)	3
<i>Conversions</i>	4
<i>Details</i>	6
<i>Harmonies</i>	12
<i>Previews</i>	24
<i>Color Blindness Simulation</i>	28
<i>CSS Examples</i>	31

Color

**HunterLab(61.4539, 9.0326,
12.9542)**

Conversions

Conversions Part 1

Format	Color
Hex	C69C8F
RGB	198, 156, 143
RGB Percent	78%, 61%, 56%
CMY	0.2235, 0.3882, 0.4392
CMYK	0.00, 0.21, 0.28, 0.22
HSL	14°, 33%, 67%
HSV	14°, 28%, 78%
XYZ	40.1351, 37.7658, 31.1608
YIQ	167.0760, 29.2050, 4.8610

Conversions

Conversions Part 2

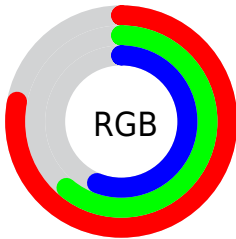
Format	Color
R _Y B	198, 160, 143
Decimal	13016207
CIE Lab	67.85, 13.70, 12.77
CIE LCh	68, 18.727, 42.979
Yxy	37.7676, 0.3680, 0.3463
Android (android.graphics.Color)	4291206287 (0xFFC69C8F)
YUV	167.0760, -11.8695, 27.1203
Hunter-Lab	61.4539, 9.0326, 12.9542

Details

The HunterLab color $61.4539, 9.0326, 12.9542$ is a light color, and the websafe version is hex $CC9999$. A complement of this color would be $66.7933, -13.0133, -6.4946$, and the grayscale version is $62.2348, -3.3207, 3.3813$.

A 20% lighter version of the original color is $84.7819, 8.7205, 15.4543$, and $40.9061, 8.5093, 10.3451$ is the 20% darker color. If you saturate the color by 10%, you get $56.9712, 14.2995, 15.7853$, and if you desaturate by 10%, it is $66.1933, 4.0765, 9.9063$.

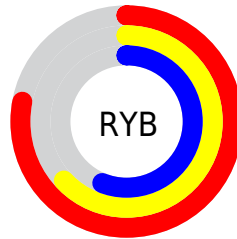
Distribution



Red (78%)

Green (61%)

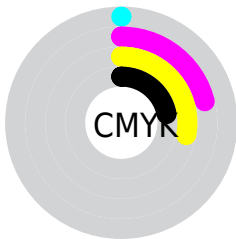
Blue (56%)



Red (78%)

Yellow (63%)

Blue (56%)

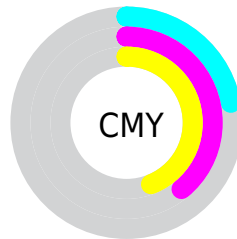


Cyan (0%)

Magenta (21%)

Yellow (28%)

Black (22%)



Cyan (22%)

Magenta (39%)

Yellow (44%)

Brightness & Saturation Gradients

These gradients show how the HunterLab color 61.4539, 9.0326, 12.9542 changes by changing the brightness by 10 percent. The first figure shows a shift by +10% for each color and the second figure -10%.

Similar to the brightness gradients but the following saturation gradients show a change of the HunterLab color 61.4539, 9.0326, 12.9542 by changing the saturation by 10% instead.

■ 61.4539, 9.0326,
12.9542

■ 61.4539, 9.0326,
12.9542

183.4726, 7.5885,
24.4862

■ 50.7960, 8.9008,
11.6731

■ 84.7064, 9.0799,
15.4940

■ 40.8361, 8.6897,
10.3723

■ 97.2314, 9.0130,
16.7609

■ 31.6285, 8.3850,
9.0397

110.3193, 8.8917,
18.0307

■ 23.2408, 7.9701,
7.6547

123.9469, 8.7199,
19.3056

■ 15.7627, 7.4216,
6.1819

138.0935, 8.5010,
20.5874

■ 9.3216, 6.7085,
6.1846

152.7407, 8.2378,

0.0000, INF, NaN

21.8774

0.0000, NaN, NaN

167.8721, 7.9329,
23.1768

0.0000, NaN, NaN

■ 61.4539, 9.0326,
12.9542

■ 61.4539, 9.0326,
12.9542

■ 56.9712, 14.2995,
15.7853

■ 66.1933, 4.0765,
9.9063

■ 52.7783, 19.8832,
18.3358

■ 71.1534, -0.5790,
6.6850

■ 48.9204, 25.7487,
20.5289

■ 76.3091, -4.9617,
3.3257

■ 45.4467, 31.8128,
22.2717

■ 81.6383, -9.1000,
-0.1462

■ 42.4093, 37.9208,
23.4648

■ 87.1228, -13.0223,
-3.7119

■ 39.8584, 43.8317,
24.0261

■ 92.5062, -18.1059,
-3.9520

■ 37.8307, 49.2126,
23.9746

■ 95.2606, -22.2378,
-0.5739

■ 37.4486, 50.2813,
23.9559

Harmonies

Analogous

The Analogous color harmony consists of three colors that are next to each other on the color wheel.



61.4553, 13.3220, 6.7082



61.4539, 9.0326, 12.9542



61.4553, 1.5342, 16.3370

Triad

The Triadic color harmony groups three colors that are evenly spaced from another and form a triangle on the color wheel.



61.4553, 9.0303, 12.9551



61.4553, -18.0249, 7.6893



61.4553, 0.4003, -13.6551

Complementary

The Complementary color scheme is a pair of colors which are on the opposite of each other on the color wheel.



61.4539, 9.0326, 12.9542



66.7933, -13.0133, -6.4946

Split Complementary

Split-complementary colors differ from the complementary color scheme. The scheme consists of three colors, the original color and two neighbors of the complement color.



61.4553, -7.9551, -13.2989



61.4539, 9.0326, 12.9542



61.4553, -18.2919, -0.2194

Square

The Square scheme is like the rectangle color scheme, but the four colors are evenly spaced on the color wheel.



61.4553, 9.0303, 12.9551



61.4553, -13.9460, 13.5897



61.4553, -14.6961, -8.1213



61.4553, 8.1618, -9.0373

Rectangle

The Rectangle color scheme consists of four colors that form a rectangle on the color wheel.



61.4539, 9.0326, 12.9542



61.4553, -4.1225, 16.8363



61.4553, -14.6961, -8.1213



61.4553, -2.4378, -14.1296

Sweetspot

The Sweet Spot groups the original color and five complimentary colors.



61.4553, 9.0303, 12.9551



94.4543, -0.5644, 9.0461



59.2966, 22.3199, -9.0573



43.2251, 0.1662, 4.4935

0.0000, NaN, NaN



46.2646, -2.4686, 2.5136

Same Dimension

The Same Dimension uses a secret algorithm to generate beautiful new colors.



61.4553, 9.0303, 12.9551



78.3234, 15.9741, 19.4335



69.2776, -4.6471, 20.3666



33.2224, 0.0710, 3.4066



30.3837, 39.9878, 19.4223



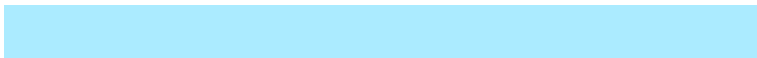
7.4359, 6.4012, 4.6940

Inverse Universe

The Inverse Universe completely reimagines the original color for something new.



66.7933, -13.0133, -6.4946



86.7971, -19.1463, -11.4766



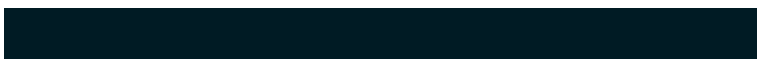
58.5298, 0.3217, -18.0486



34.0970, -3.5184, 0.2259



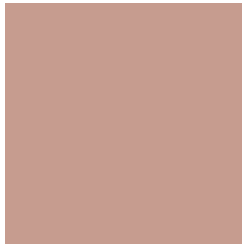
41.4984, -12.7745, -24.2929



9.5987, -3.5614, -4.3095

Previews

White Background



This preview shows how the HunterLab color 61.4539, 9.0326, 12.9542 looks on a white background.

Color Contrast Check

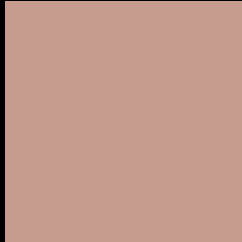
Large Text (above 18pt) WCAG AA × Fail

Any Text WCAG AA × Fail

Large Text (above 18pt) WCAG AAA × Fail

Any Text WCAG AAA × Fail

Black Background



This preview shows how the HunterLab color 61.4539, 9.0326, 12.9542 looks on a black background.

Color Contrast Check

Large Text (above 18pt) WCAG AA ✓ Pass

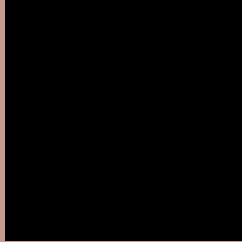
Any Text WCAG AA ✓ Pass

Large Text (above 18pt) WCAG AAA ✓ Pass

Any Text WCAG AAA ✓ Pass

If you want to check with other color combinations, try the [Color Contrast Checker](#).

HunterLab 61.4539, 9.0326, 12.9542 Background



This preview shows how black text looks on a background with the HunterLab color 61.4539, 9.0326, 12.9542.



This preview shows how white text looks on a background with the HunterLab color 61.4539, 9.0326,

Color Blindness Simulation

Color vision deficiency is a very complex topic, and I could not describe the different causes any better than Wikipedia does, so if you want to learn more, you should check out their [article about color blindness](#).

Dichromacy



Original Color

61.4539, 9.0326, 12.9542

Protanopia

61.5895, -3.3470, 10.9216

Deuteranopia

61.3974, 4.5312, 13.1993



Tritanopia

61.4642, 14.4175, 3.7882

Trichromacy



Original Color

61.4539, 9.0326, 12.9542

Protanomaly

61.5313, 0.8162, 11.7261

Deuteranomaly

61.4363, 6.0944, 13.2663

Tritanomaly

61.3903, 12.3456, 7.2375

Monochromacy



Original Color

61.4539, 9.0326, 12.9542

Achromatopsia

62.1634, -3.3169, 3.3775

Achromatomaly

61.7479, 0.7183, 7.0012

CSS Examples

Text

The CSS property to change the color of the text to HunterLab 61.4539, 9.0326, 12.9542 is called "color". The color property can be set on classes, ids or directly on the HTML element.

This example shows how text in the color `rgb(198, 156, 143)` looks like.

```
.text, #text, p{  
    color:rgb(198, 156, 143)  
}
```

If you want to add a text shadow in that color use the text-shadow property, you can generate a text shadow directly with our [CSS Text Shadow Generator](#).

Here you see how black text with a 4 pixel rgb(198, 156, 143) colored shadow looks like.

```
.shadow{ text-shadow: 4px 4px 2px rgb(198, 156, 143) }
```

Border

The CSS property to change the border of an element to HunterLab 61.4539, 9.0326, 12.9542 is called "border". The border property can be set on classes, ids or directly on the HTML element.

This example shows the color as border, it can be applied via the CSS property "border" or "border-color".

```
.border, #border, table{ border:4px solid rgb(198, 156, 143) }
```


If only the border color should be changed use the property `border-color`.

```
.border{ border-color:rgb(198, 156, 143) }
```

If you want to add a box shadow in that color use:

Here you see how a box with a 4 pixel `rgb(198, 156, 143)` colored shadow looks like.

```
.boxshadow{ -moz-box-shadow:4px 4px 4px  
4px rgb(198, 156, 143); -webkit-box-  
shadow:4px 4px 4px 4px rgb(198, 156, 143);  
box-shadow:4px 4px 4px 4px rgb(198, 156,  
143) }
```

Background

The CSS property to change the background color of an element to HunterLab 61.4539, 9.0326, 12.9542 is called "background". The background property can be set on classes, ids or directly on the HTML element.

```
.background, #background, body{  
background: rgb(198, 156, 143) }
```

If only the background color should be changed can be used:

```
.background{ background-color: rgb(198,  
156, 143) }
```

This example shows the color as background, it is applied via the CSS property "background".

To optimize and compress your CSS code, you can use our [online CSS compressor and optimizer](#) based on csstidy. If you want to create a linear or radial gradient as background or border, check our [CSS Gradient Generator](#).

Hey! You found this booklet interesting? Support Converting Colors with the new Membership Option!

The pro membership hides all ads, plus gives you double the colors in the color bucket, and more awesome pro features!

[Learn more, Memberships starting at \\$2.50/m!](#)

**Follow me
on Twitter!**

@ConvertingColor