

Converting Colors

HunterLab(61.5459, 9.6994,
17.8205)

Have a look what the booklet for
HunterLab(61.5459, 9.6994,
17.8205) contains.

HunterLab(61.4418, 9.7862, 17.6520)	3
<i>Conversions</i>	4
<i>Details</i>	6
<i>Harmonies</i>	12
<i>Previews</i>	24
<i>Color Blindness Simulation</i>	28
<i>CSS Examples</i>	31

Color

**HunterLab(61.4418, 9.7862,
17.6520)**

Conversions

Conversions Part 1

Format	Color
Hex	CB9B82
RGB	203, 155, 130
RGB Percent	80%, 61%, 51%
CMY	0.2039, 0.3921, 0.4902
CMYK	0.00, 0.24, 0.36, 0.20
HSL	21°, 41%, 65%
HSV	21°, 36%, 80%
XYZ	40.3793, 37.7509, 26.2775
YIQ	166.5020, 36.6330, 2.4010

Conversions

Conversions Part 2

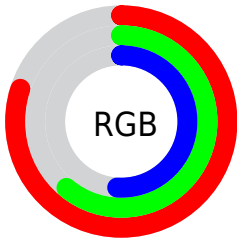
Format	Color
R_{YB}	203, 168, 130
Decimal	13343618
CIE Lab	67.84, 14.51, 20.03
CIE LCh	68, 24.730, 54.081
Yxy	37.7527, 0.3867, 0.3616
Android (android.graphics.Color)	4291533698 (0xFFCB9B82)
YUV	166.5020, -17.9955, 32.0087
Hunter-Lab	61.4418, 9.7862, 17.6520

Details

The HunterLab color $61.4418, 9.7862, 17.6520$ is a light color, and the websafe version is hex $CC9999$. A complement of this color would be $63.9508, -11.6947, -13.1808$, and the grayscale version is $62.0206, -3.3093, 3.3697$.

A 20% lighter version of the original color is $84.1261, 7.3191, 20.3925$, and $40.8629, 9.1637, 14.0449$ is the 20% darker color. If you saturate the color by 10%, you get $57.4982, 14.3954, 20.5583$, and if you desaturate by 10%, it is $65.6077, 5.5121, 14.3329$.

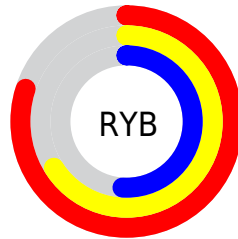
Distribution



Red (80%)

Green (61%)

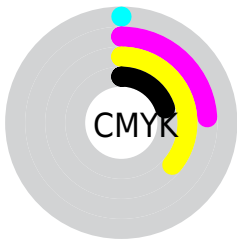
Blue (51%)



Red (80%)

Yellow (66%)

Blue (51%)

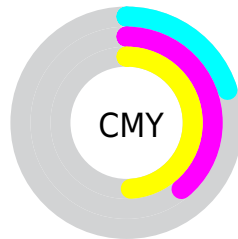


Cyan (0%)

Magenta (24%)

Yellow (36%)

Black (20%)



Cyan (20%)

Magenta (39%)

Yellow (49%)

Brightness & Saturation Gradients

These gradients show how the HunterLab color 61.4418, 9.7862, 17.6520 changes by changing the brightness by 10 percent. The first figure shows a shift by +10% for each color and the second figure -10%.

Similar to the brightness gradients but the following saturation gradients show a change of the HunterLab color 61.4418, 9.7862, 17.6520 by changing the saturation by 10% instead.

61.4418, 9.7862,
17.6520

61.4418, 9.7862,
17.6520

183.4552, 8.6321,
32.1759

50.7847, 9.6149,
15.9306

84.6930, 9.9064,
20.9827

40.8255, 9.3625,
14.1501

97.2173, 9.8738,
22.6100

31.6189, 9.0140,
12.2876

110.3046, 9.7855,
24.2213

23.2321, 8.5524,
10.3067

123.9316, 9.6456,
25.8215

15.7550, 7.9542,
8.2060

138.0776, 9.4575,
27.4144

9.3151, 7.1893,
6.5206

152.7244, 9.2242,

0.0000, INF, NaN

29.0029

0.0000, NaN, NaN

167.8552, 8.9483,
30.5894

0.0000, NaN, NaN

■ 61.4418, 9.7862,
17.6520

■ 61.4418, 9.7862,
17.6520

■ 57.4982, 14.3954,
20.5583

■ 65.6077, 5.5121,
14.3329

■ 53.8000, 19.3490,
22.9768

■ 69.9673, 1.5647,
10.6610

■ 50.3795, 24.6225,
24.8292

■ 74.5013, -2.0821,
6.6897

■ 47.2700, 30.1581,
26.0384

■ 79.1916, -5.4547,
2.4625

■ 44.5050, 35.8477,
26.5455

■ 84.0229, -8.5800,
-1.9855

■ 42.1147, 41.5190,
26.3462

■ 88.9820, -11.4839,
-6.6254

■ 41.2536, 43.7222,
26.1857

■ 93.4439, -17.6244,
-2.7573

■ 95.6225, -20.9166,
-0.1049

Harmonies

Analogous

The Analogous color harmony consists of three colors that are next to each other on the color wheel.



61.4433, 17.5029, 11.0850



61.4418, 9.7862, 17.6520



61.4433, -1.0593, 20.3439

Triad

The Triadic color harmony groups three colors that are evenly spaced from another and form a triangle on the color wheel.



61.4433, 9.7837, 17.6529



61.4433, -23.1527, 5.4070



61.4433, 5.6967, -18.2962

Complementary

The Complementary color scheme is a pair of colors which are on the opposite of each other on the color wheel.



61.4418, 9.7862, 17.6520



63.9508, -11.6947, -13.1808

Split Complementary

Split-complementary colors differ from the complementary color scheme. The scheme consists of three colors, the original color and two neighbors of the complement color.



61.4433, -5.4730, -20.5466



61.4418, 9.7862, 17.6520



61.4433, -21.6250, -5.5557

Square

The Square scheme is like the rectangle color scheme, but the four colors are evenly spaced on the color wheel.



61.4433, 9.7837, 17.6529



61.4433, -19.6707, 14.1289



61.4433, -15.3392, -15.5325



61.4433, 15.0282, -9.8371

Rectangle

The Rectangle color scheme consists of four colors that form a rectangle on the color wheel.



61.4418, 9.7862, 17.6520



61.4433, -8.4024, 19.9956



61.4433, -15.3392, -15.5325



61.4433, 2.0123, -19.8601

Sweetspot

The Sweet Spot groups the original color and five complimentary colors.



61.4433, 9.7837, 17.6529



93.3359, -0.2930, 11.3667



56.4831, 29.8222, -9.2555



42.8097, 0.1664, 5.5836

0.0000, NaN, NaN



46.2646, -2.4686, 2.5136

Same Dimension

The Same Dimension uses a secret algorithm to generate beautiful new colors.



61.4433, 9.7837, 17.6529



75.5938, 17.1636, 25.7593



71.7617, -8.0469, 26.6292



34.3969, -0.4058, 3.8141



33.1420, 34.2379, 21.0213



8.4100, 5.5265, 5.2790

Inverse Universe

The Inverse Universe completely reimagines the original color for something new.



63.9508, -11.6947, -13.1808



79.4516, -16.1129, -21.9246



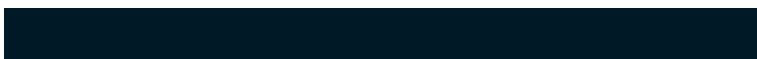
53.3420, 5.9827, -29.8263



34.7199, -3.1424, -0.1267



36.9814, -5.2223, -34.9501



9.1825, -2.3704, -6.3603

Previews

White Background



This preview shows how the HunterLab color 61.4418, 9.7862, 17.6520 looks on a white background.

Color Contrast Check

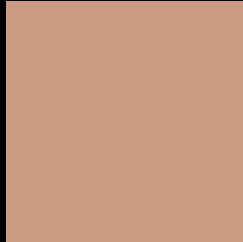
Large Text (above 18pt) WCAG AA × Fail

Any Text WCAG AA × Fail

Large Text (above 18pt) WCAG AAA × Fail

Any Text WCAG AAA × Fail

Black Background



This preview shows how the HunterLab color 61.4418, 9.7862, 17.6520 looks on a black background.

Color Contrast Check

Large Text (above 18pt) WCAG AA ✓ Pass

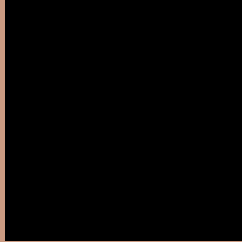
Any Text WCAG AA ✓ Pass

Large Text (above 18pt) WCAG AAA ✓ Pass

Any Text WCAG AAA ✓ Pass

If you want to check with other color combinations, try the [Color Contrast Checker](#).

HunterLab 61.4418, 9.7862, 17.6520 Background



This preview shows how black text looks on a background with the HunterLab color 61.4418, 9.7862, 17.6520.



This preview shows how white text looks on a background with the HunterLab color 61.4418, 9.7862,

Color Blindness Simulation

Color vision deficiency is a very complex topic, and I could not describe the different causes any better than Wikipedia does, so if you want to learn more, you should check out their [article about color blindness](#).

Dichromacy



Original Color

61.4418, 9.7862, 17.6520

Protanopia

61.4601, -4.4301, 15.6816

Deuteranopia

61.5228, 4.3529, 17.9712



Tritanopia

61.2725, 17.6964, 4.9892

Trichromacy



Original Color

61.4418, 9.7862, 17.6520

Protanomaly

61.2352, 0.6525, 16.2589

Deuteranomaly

61.5703, 5.9419, 18.0437

Tritanomaly

61.3495, 14.5783, 10.1730

Monochromacy



Original Color

61.4418, 9.7862, 17.6520

Achromatopsia

62.1634, -3.3169, 3.3775

Achromatomaly

61.8310, 0.7828, 8.7983

CSS Examples

Text

The CSS property to change the color of the text to HunterLab 61.4418, 9.7862, 17.6520 is called "color". The color property can be set on classes, ids or directly on the HTML element.

This example shows how text in the color `rgb(203, 155, 130)` looks like.

```
.text, #text, p{  
    color:rgb(203, 155, 130)  
}
```

If you want to add a text shadow in that color use the text-shadow property, you can generate a text shadow directly with our [CSS Text Shadow Generator](#).

Here you see how black text with a 4 pixel rgb(203, 155, 130) colored shadow looks like.

```
.shadow{ text-shadow: 4px 4px 2px rgb(203, 155, 130) }
```

Border

The CSS property to change the border of an element to HunterLab 61.4418, 9.7862, 17.6520 is called "border". The border property can be set on classes, ids or directly on the HTML element.

This example shows the color as border, it can be applied via the CSS property "border" or "border-color".

```
.border, #border, table{ border:4px solid rgb(203, 155, 130) }
```


If only the border color should be changed use the property `border-color`.

```
.border{ border-color:rgb(203, 155, 130) }
```

If you want to add a box shadow in that color use:

Here you see how a box with a 4 pixel `rgb(203, 155, 130)` colored shadow looks like.

```
.boxshadow{ -moz-box-shadow:4px 4px 4px  
4px rgb(203, 155, 130); -webkit-box-  
shadow:4px 4px 4px 4px rgb(203, 155, 130);  
box-shadow:4px 4px 4px 4px rgb(203, 155,  
130) }
```

Background

The CSS property to change the background color of an element to HunterLab 61.4418, 9.7862, 17.6520 is called "background". The background property can be set on classes, ids or directly on the HTML element.

```
.background, #background, body{  
background: rgb(203, 155, 130) }
```

If only the background color should be changed can be used:

```
.background{ background-color: rgb(203,  
155, 130) }
```

This example shows the color as background, it is applied via the CSS property "background".

To optimize and compress your CSS code, you can use our [online CSS compressor and optimizer](#) based on csstidy. If you want to create a linear or radial gradient as background or border, check our [CSS Gradient Generator](#).

Hey! You found this booklet interesting? Support Converting Colors with the new Membership Option!

The pro membership hides all ads, plus gives you double the colors in the color bucket, and more awesome pro features!

[Learn more, Memberships starting at \\$2.50/m!](#)

**Follow me
on Twitter!**

@ConvertingColor