

Converting Colors

HunterLab(61.5664, 2.4692,
11.4028)

Have a look what the booklet for
HunterLab(61.5664, 2.4692,
11.4028) contains.

HunterLab(61.5716, 2.4690, 11.4025)	3
<i>Conversions</i>	4
<i>Details</i>	6
<i>Harmonies</i>	12
<i>Previews</i>	24
<i>Color Blindness Simulation</i>	28
<i>CSS Examples</i>	31

Color

**HunterLab(61.5716, 2.4690,
11.4025)**

Conversions

Conversions Part 1

Format	Color
Hex	B9A193
RGB	185, 161, 147
RGB Percent	73%, 63%, 58%
CMY	0.2745, 0.3686, 0.4235
CMYK	0.00, 0.13, 0.21, 0.27
HSL	22°, 21%, 65%
HSV	22°, 21%, 73%
XYZ	38.0189, 37.9106, 32.9174
YIQ	166.5800, 18.7980, 0.7340

Conversions

Conversions Part 2

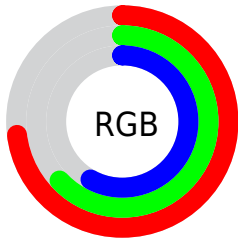
Format	Color
RYB	185, 169, 147
Decimal	12165523
CIELab	67.96, 6.53, 10.52
CIELCh	68, 12.381, 58.180
Yxy	37.9123, 0.3493, 0.3483
Android (android.graphics.Color)	4290355603 (0xFFB9A193)
YUV	166.5800, -9.6529, 16.1543
Hunter-Lab	61.5716, 2.4690, 11.4025

Details

The HunterLab color **61.5716, 2.4690, 11.4025** is a light color, and the websafe version is hex **CC9999**, and the color name is **white mouse (shironezumi)**. A complement of this color would be **62.3143, -7.7831, -5.4101**, and the grayscale version is **62.0246, -3.3095, 3.3699**.

A 20% lighter version of the original color is **84.8702, 1.5919, 13.7212**, and **40.7518, 2.8846, 9.0611** is the 20% darker color. If you saturate the color by 10%, you get **57.8646, 5.8889, 14.6562**, and if you desaturate by 10%, it is **65.4343, -0.6776, 7.8366**.

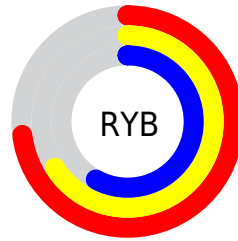
Distribution



Red (73%)

Green (63%)

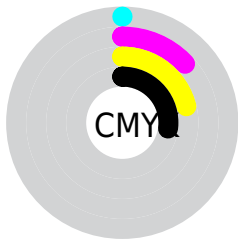
Blue (58%)



Red (73%)

Yellow (66%)

Blue (58%)

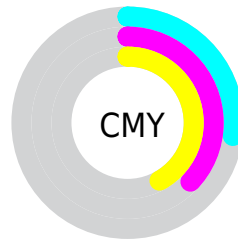


Cyan (0%)

Magenta (13%)

Yellow (21%)

Black (27%)



Cyan (27%)

Magenta (37%)

Yellow (42%)

Brightness & Saturation Gradients

These gradients show how the HunterLab color 61.5716, 2.4690, 11.4025 changes by changing the brightness by 10 percent. The first figure shows a shift by +10% for each color and the second figure -10%.

Similar to the brightness gradients but the following saturation gradients show a change of the HunterLab color 61.5716, 2.4690, 11.4025 by changing the saturation by 10% instead.

■ 61.5716, 2.4690,
11.4025

■ 61.5716, 2.4690,
11.4025

183.6420, -1.6001,
22.0385

■ 50.9064, 2.6962,
10.2523

■ 84.8373, 1.8514,
13.7066

■ 40.9387, 2.8652,
9.0938

■ 97.3685, 1.4735,
14.8658

■ 31.7228, 2.9660,
7.9183

110.4623, 1.0534,
16.0334

■ 23.3260, 2.9871,
6.7103

124.0955, 0.5937,
17.2108

■ 15.8375, 2.9120,
5.4426

138.2476, 0.0967,
18.3992

■ 9.3850, 2.7135,
5.1573

152.9001, -0.4357,

0.0000, NaN, NaN

19.5996

0.0000, NaN, NaN

168.0366, -1.0018,
20.8125

0.0000, NaN, NaN

■ 61.5716, 2.4690,
11.4025

■ 61.5716, 2.4690,
11.4025

■ 57.8646, 5.8889,
14.6562

■ 65.4343, -0.6776,
7.8366

■ 54.3267, 9.6070,
17.5441

■ 69.4333, -3.5672,
3.9987

■ 50.9795, 13.6330,
20.0088

■ 73.5566, -6.2253,
-0.0746

■ 47.8457, 17.9652,
21.9856

■ 77.7928, -8.6744,
-4.3533

■ 44.9500, 22.5810,
23.4081

■ 82.1322, -10.9359,
-8.8129

■ 42.3184, 27.4264,
24.2180

■ 86.4534, -13.6577,
-11.8492

■ 39.9765, 32.4051,
24.3833

■ 90.2802, -19.5026,
-6.8433

■ 38.0393, 37.0676,
24.0886

■ 94.1876, -25.2558,
-1.9587

■ 94.3686, -25.5175,
-1.7375

Harmonies

Analogous

The Analogous color harmony consists of three colors that are next to each other on the color wheel.



61.5730, 6.4501, 7.9762



61.5716, 2.4690, 11.4025



61.5730, -2.9477, 12.6991

Triad

The Triadic color harmony groups three colors that are evenly spaced from another and form a triangle on the color wheel.



61.5730, 2.4670, 11.4034



61.5730, -13.6428, 3.6747



61.5730, 1.8568, -6.3337

Complementary

The Complementary color scheme is a pair of colors which are on the opposite of each other on the color wheel.



61.5716, 2.4690, 11.4025



62.3143, -7.7831, -5.4101

Split Complementary

Split-complementary colors differ from the complementary color scheme. The scheme consists of three colors, the original color and two neighbors of the complement color.



61.5730, -3.6289, -7.7389



61.5716, 2.4690, 11.4025



61.5730, -12.4575, -1.6621

Square

The Square scheme is like the rectangle color scheme, but the four colors are evenly spaced on the color wheel.



61.5730, 2.4670, 11.4034



61.5730, -12.1367, 8.4904



61.5730, -8.8404, -5.9599



61.5730, 6.0891, -2.2722

Rectangle

The Rectangle color scheme consists of four colors that form a rectangle on the color wheel.



61.5716, 2.4690, 11.4025



61.5730, -6.5983, 12.2757



61.5730, -8.8404, -5.9599



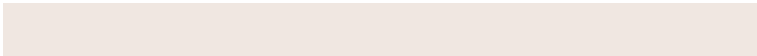
61.5730, 0.0923, -7.1474

Sweetspot

The Sweet Spot groups the original color and five complimentary colors.



61.5730, 2.4670, 11.4034



89.9248, -2.6648, 8.2477



58.4166, 13.2702, -2.9100



41.5930, -1.1209, 3.9821



96.5975, -5.1542, 5.2483



43.2801, -2.3093, 2.3515

Same Dimension

The Same Dimension uses a secret algorithm to generate beautiful new colors.



61.5730, 2.4670, 11.4034



79.9585, 5.4830, 17.4366



67.1095, -6.8399, 16.8450



30.8865, -0.4872, 3.4615



31.5933, 30.0397, 19.9936



6.8701, 3.3706, 4.2923

Inverse Universe

The Inverse Universe completely reimagines the original color for something new.



62.3143, -7.7831, -5.4101



81.1751, -11.3821, -10.2215



56.7313, 1.4968, -12.9856



31.0469, -2.6973, -0.1649



33.4111, -3.1652, -34.9281



7.1235, -1.8947, -4.8136

Previews

White Background



This preview shows how the HunterLab color 61.5716, 2.4690, 11.4025 looks on a white background.

Color Contrast Check

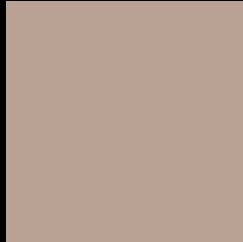
Large Text (above 18pt) WCAG AA × Fail

Any Text WCAG AA × Fail

Large Text (above 18pt) WCAG AAA × Fail

Any Text WCAG AAA × Fail

Black Background



This preview shows how the HunterLab color 61.5716, 2.4690, 11.4025 looks on a black background.

Color Contrast Check

Large Text (above 18pt) WCAG AA ✓ Pass

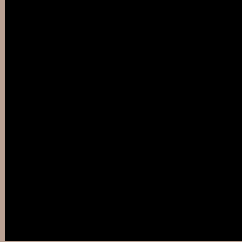
Any Text WCAG AA ✓ Pass

Large Text (above 18pt) WCAG AAA ✓ Pass

Any Text WCAG AAA ✓ Pass

If you want to check with other color combinations, try the [Color Contrast Checker](#).

HunterLab 61.5716, 2.4690, 11.4025 Background



This preview shows how black text looks on a background with the HunterLab color 61.5716, 2.4690, 11.4025.



This preview shows how white text looks on a background with the HunterLab color 61.5716, 2.4690,

Color Blindness Simulation

Color vision deficiency is a very complex topic, and I could not describe the different causes any better than Wikipedia does, so if you want to learn more, you should check out their [article about color blindness](#).

Dichromacy



Original Color

61.5716, 2.4690, 11.4025

Protanopia

61.6153, -3.2055, 10.5502

Deuteranopia

61.5951, 4.0011, 11.4539



Tritanopia

61.6825, 8.4508, 1.6013

Trichromacy



Original Color

61.5716, 2.4690, 11.4025

Protanomaly

61.6735, -1.5575, 11.0414

Deuteranomaly

61.4923, 3.6553, 11.3401

Tritanomaly

61.6196, 6.3383, 5.1905

Monochromacy



Original Color

61.5716, 2.4690, 11.4025

Achromatopsia

62.1634, -3.3169, 3.3775

Achromatomaly

62.0056, -1.2588, 6.3844

CSS Examples

Text

The CSS property to change the color of the text to HunterLab 61.5716, 2.4690, 11.4025 is called "color". The color property can be set on classes, ids or directly on the HTML element.

This example shows how text in the color `rgb(185, 161, 147)` looks like.

```
.text, #text, p{  
    color:rgb(185, 161, 147)  
}
```

If you want to add a text shadow in that color use the text-shadow property, you can generate a text shadow directly with our [CSS Text Shadow Generator](#).

Here you see how black text with a 4 pixel rgb(185, 161, 147) colored shadow looks like.

```
.shadow{ text-shadow: 4px 4px 2px rgb(185, 161, 147) }
```

Border

The CSS property to change the border of an element to HunterLab 61.5716, 2.4690, 11.4025 is called "border". The border property can be set on classes, ids or directly on the HTML element.

This example shows the color as border, it can be applied via the CSS property "border" or "border-color".

```
.border, #border, table{ border:4px solid rgb(185, 161, 147) }
```


If only the border color should be changed use the property `border-color`.

```
.border{ border-color:rgb(185, 161, 147) }
```

If you want to add a box shadow in that color use:

Here you see how a box with a 4 pixel `rgb(185, 161, 147)` colored shadow looks like.

```
.boxshadow{ -moz-box-shadow:4px 4px 4px  
4px rgb(185, 161, 147); -webkit-box-  
shadow:4px 4px 4px 4px rgb(185, 161, 147);  
box-shadow:4px 4px 4px 4px rgb(185, 161,  
147) }
```

Background

The CSS property to change the background color of an element to HunterLab 61.5716, 2.4690, 11.4025 is called "background". The background property can be set on classes, ids or directly on the HTML element.

```
.background, #background, body{  
background: rgb(185, 161, 147) }
```

If only the background color should be changed can be used:

```
.background{ background-color: rgb(185,  
161, 147) }
```

This example shows the color as background, it is applied via the CSS property "background".

To optimize and compress your CSS code, you can use our [online CSS compressor and optimizer](#) based on csstidy. If you want to create a linear or radial gradient as background or border, check our [CSS Gradient Generator](#).

Hey! You found this booklet interesting? Support Converting Colors with the new Membership Option!

The pro membership hides all ads, plus gives you double the colors in the color bucket, and more awesome pro features!

[Learn more, Memberships starting at \\$2.50/m!](#)

**Follow me
on Twitter!**

@ConvertingColor