

# Converting Colors

HunterLab(61.6012, 30.8169,  
10.7263)

Have a look what the booklet for  
HunterLab(61.6012, 30.8169,  
10.7263) contains.

<b>HunterLab(61.6012, 30.8169, 10.7263)</b> .....	3
<i><b>Conversions</b></i> .....	4
<i><b>Details</b></i> .....	6
<i><b>Harmonies</b></i> .....	12
<i><b>Previews</b></i> .....	24
<i><b>Color Blindness Simulation</b></i> .....	28
<i><b>CSS Examples</b></i> .....	31

# Color

**HunterLab(61.6012, 30.8169,  
10.7263)**

# Conversions

## Conversions Part 1

<b>Format</b>	<b>Color</b>
Hex	E78C96
RGB	231, 140, 150
RGB Percent	91%, 55%, 59%
CMY	0.0941, 0.4510, 0.4118
CMYK	0.00, 0.39, 0.35, 0.09
HSL	353°, 65%, 73%
HSV	353°, 39%, 91%
XYZ	47.8381, 37.9471, 33.6573
YIQ	168.3490, 51.0260, 22.4020

# Conversions

## Conversions Part 2

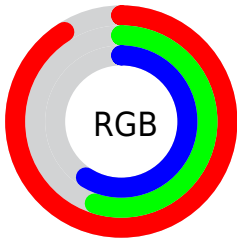
<b>Format</b>	<b>Color</b>
<b>R<sub>YB</sub></b>	231, 140, 150
Decimal	15174806
CIE <sub>Lab</sub>	67.98, 35.73, 9.57
CIE <sub>LCh</sub>	68, 36.990, 14.991
Yxy	37.9489, 0.4005, 0.3177
Android (android.graphics.Color)	4293364886 (0xFFE78C96)
YUV	168.3490, -9.0461, 54.9449
Hunter-Lab	61.6012, 30.8169, 10.7263

# Details

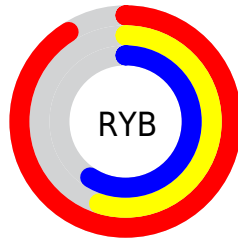
The HunterLab color **61.6012, 30.8169, 10.7263** is a light color, and the websafe version is hex **FF9999**. A complement of this color would be **82.4309, -30.6892, 1.0509**, and the grayscale version is **62.7424, -3.3478, 3.4089**.

A 20% lighter version of the original color is **80.4051, 18.3639, 7.7420**, and **40.9445, 28.5098, 8.6355** is the 20% darker color. If you saturate the color by 10%, you get **55.9342, 40.2869, 12.9945**, and if you desaturate by 10%, it is **67.9299, 21.3904, 8.7948**.

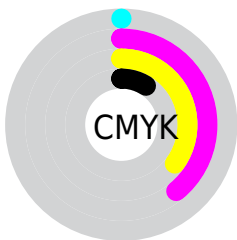
# Distribution



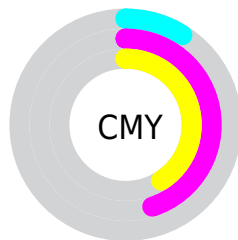
- Red (91%)
- Green (55%)
- Blue (59%)



- Red (91%)
- Yellow (55%)
- Blue (59%)



- Cyan (0%)
- Magenta (39%)
- Yellow (35%)
- Black (9%)



- Cyan (9%)
- Magenta (45%)
- Yellow (41%)

# Brightness & Saturation Gradients

These gradients show how the HunterLab color 61.6012, 30.8169, 10.7263 changes by changing the brightness by 10 percent. The first figure shows a shift by +10% for each color and the second figure -10%.

Similar to the brightness gradients but the following saturation gradients show a change of the HunterLab color 61.6012, 30.8169, 10.7263 by changing the saturation by 10% instead.



61.6012, 30.8169,  
10.7263

61.6012, 30.8169,  
10.7263

183.6848, 36.8905,  
20.9876

50.9343, 29.7036,  
9.6308

84.8704, 32.7225,  
12.9322

40.9647, 28.4764,  
8.5315

97.4031, 33.5385,  
14.0465

31.7467, 27.1224,  
7.4212

110.4984, 34.2719,  
15.1713

23.3475, 25.6364,  
6.2866

124.1330, 34.9289,  
16.3079

15.8564, 24.0328,  
5.1037

138.2865, 35.5149,  
17.4572

9.4009, 22.4115,  
4.7307

152.9403, 36.0345,

0.0000, INF, NaN

18.6200

0.0000, NaN, NaN

168.0781, 36.4918,  
19.7966

0.0000, NaN, NaN

■ 61.6012, 30.8169,  
10.7263

■ 61.6012, 30.8169,  
10.7263

■ 55.9342, 40.2869,  
12.9945

■ 67.9299, 21.3904,  
8.7948

■ 51.0503, 49.4544,  
15.5603

■ 74.8070, 12.1972,  
7.1853

■ 47.0828, 57.7429,  
18.3111

■ 82.1450, 3.3034,  
5.8662

■ 44.1419, 64.4120,  
21.0357

■ 89.8730, -5.2841,  
4.7983

■ 42.2729, 68.7831,  
23.4528

■ 97.7696, -13.3270,  
3.7516

■ 41.3483, 70.8078,  
25.2639

■ 97.8412, -12.9292,  
2.7323

■ 41.3046, 70.9093,  
25.3425

# Harmonies

## Analogous

The Analogous color harmony consists of three colors that are next to each other on the color wheel.



61.6027, 30.8107, -5.0733



61.6012, 30.8169, 10.7263



61.6027, 21.0452, 21.2436

# Triad

The Triadic color harmony groups three colors that are evenly spaced from another and form a triangle on the color wheel.



61.6027, 30.8138, 10.7274



61.6027, -24.3448, 21.2480



61.6027, -11.3698, -33.9462

# Complementary

The Complementary color scheme is a pair of colors which are on the opposite of each other on the color wheel.



61.6012, 30.8169, 10.7263



82.4309, -30.6892, 1.0509

# Split Complementary

Split-complementary colors differ from the complementary color scheme. The scheme consists of three colors, the original color and two neighbors of the complement color.



61.6027, -24.3508, -22.3207



61.6012, 30.8169, 10.7263



61.6027, -31.2826, 10.7354

# Square

The Square scheme is like the rectangle color scheme, but the four colors are evenly spaced on the color wheel.



61.6027, 30.8138, 10.7274



61.6027, -11.3607, 26.1265



61.6027, -31.2846, -5.0630



61.6027, 5.2183, -33.9500



# Rectangle

The Rectangle color scheme consists of four colors that form a rectangle on the color wheel.



61.6012, 30.8169, 10.7263



61.6027, 10.8481, 25.0727



61.6027, -31.2846, -5.0630



61.6027, -16.2584, -31.1550

# Sweetspot

The Sweet Spot groups the original color and five complimentary colors.



61.6027, 30.8138, 10.7274



89.6520, 6.3214, 6.9275



63.0897, 40.7751, -31.4586



40.9734, 3.5256, 3.2915

0.0000, NaN, NaN



46.2646, -2.4686, 2.5136



# Same Dimension

The Same Dimension uses a secret algorithm to generate beautiful new colors.



61.6027, 30.8138, 10.7274



63.8576, 42.8147, 13.9640



70.3552, 11.3386, 22.6403



37.9389, 1.5510, 2.7142



30.9408, 53.1459, 18.7627



8.4622, 14.6368, 4.3435



# Inverse Universe

The Inverse Universe completely reimagines the original color for something new.



61.6027, 30.8138, 10.7274



63.8576, 42.8147, 13.9640



71.3296, -12.1985, -19.1013



37.9389, 1.5510, 2.7142



30.9408, 53.1459, 18.7627



8.4622, 14.6368, 4.3435



# Previews

## White Background



This preview shows how the HunterLab color 61.6012, 30.8169, 10.7263 looks on a white background.

## Color Contrast Check

Large Text (above 18pt) WCAG AA × Fail

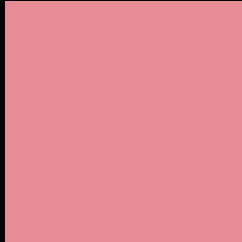
Any Text WCAG AA × Fail

Large Text (above 18pt) WCAG AAA × Fail

Any Text WCAG AAA × Fail



# Black Background



This preview shows how the HunterLab color 61.6012, 30.8169, 10.7263 looks on a black background.

## Color Contrast Check

Large Text (above 18pt) WCAG AA ✓ Pass

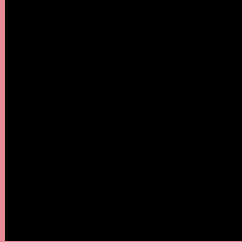
Any Text WCAG AA ✓ Pass

Large Text (above 18pt) WCAG AAA ✓ Pass

Any Text WCAG AAA ✓ Pass

If you want to check with other color combinations, try the [Color Contrast Checker](#).

## HunterLab 61.6012, 30.8169, 10.7263 Background



This preview shows how black text looks on a background with the HunterLab color 61.6012, 30.8169, 10.7263.



This preview shows how white text looks on a background with the HunterLab color 61.6012, 30.8169,



# Color Blindness Simulation

Color vision deficiency is a very complex topic, and I could not describe the different causes any better than Wikipedia does, so if you want to learn more, you should check out their [article about color blindness](#).

## Dichromacy



### Original Color

61.6012, 30.8169, 10.7263

### Protanopia

61.7549, -1.8942, 4.2998

### Deuteranopia

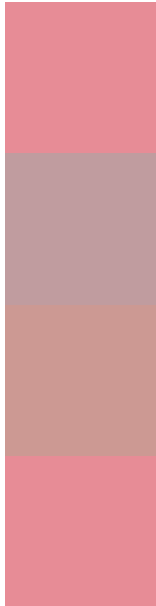
61.6731, 4.2124, 11.9331



## Tritanopia

61.6012, 30.8169, 10.7263

# Trichromacy



## Original Color

61.6012, 30.8169, 10.7263

## Protanomaly

61.2263, 9.1344, 6.1237

## Deuteranomaly

61.4218, 13.2893, 11.4348

## Tritanomaly

61.6012, 30.8169, 10.7263

# Monochromacy



## Original Color

61.6012, 30.8169, 10.7263

## Achromatopsia

62.5758, -3.3389, 3.3999

## Achromatomaly

61.7279, 8.0667, 5.7911

# CSS Examples

## Text

The CSS property to change the color of the text to HunterLab 61.6012, 30.8169, 10.7263 is called "color". The color property can be set on classes, ids or directly on the HTML element.

This example shows how text in the color `rgb(231, 140, 150)` looks like.

```
.text, #text, p{  
    color:rgb(231, 140, 150)  
}
```

If you want to add a text shadow in that color use the text-shadow property, you can generate a text shadow directly with our [CSS Text Shadow Generator](#).

Here you see how black text with a 4 pixel rgb(231, 140, 150) colored shadow looks like.

```
.shadow{ text-shadow: 4px 4px 2px rgb(231, 140, 150) }
```

## Border

The CSS property to change the border of an element to HunterLab 61.6012, 30.8169, 10.7263 is called "border". The border property can be set on classes, ids or directly on the HTML element.

This example shows the color as border, it can be applied via the CSS property "border" or "border-color".

```
.border, #border, table{ border:4px solid rgb(231, 140, 150) }
```



If only the border color should be changed use the property `border-color`.

```
.border{ border-color:rgb(231, 140, 150) }
```

If you want to add a box shadow in that color use:

Here you see how a box with a 4 pixel `rgb(231, 140, 150)` colored shadow looks like.

```
.boxshadow{ -moz-box-shadow:4px 4px 4px  
4px rgb(231, 140, 150); -webkit-box-  
shadow:4px 4px 4px 4px rgb(231, 140, 150);  
box-shadow:4px 4px 4px 4px rgb(231, 140,  
150) }
```

# Background

The CSS property to change the background color of an element to HunterLab 61.6012, 30.8169, 10.7263 is called "background". The background property can be set on classes, ids or directly on the HTML element.

```
.background, #background, body{  
background: rgb(231, 140, 150) }
```

If only the background color should be changed can be used:

```
.background{ background-color: rgb(231,  
140, 150) }
```

This example shows the color as background, it is applied via the CSS property "background".

To optimize and compress your CSS code, you can use our [online CSS compressor and optimizer](#) based on csstidy. If you want to create a linear or radial gradient as background or border, check our [CSS Gradient Generator](#).

Hey! You found this booklet interesting? Support Converting Colors with the new Membership Option!

The pro membership hides all ads, plus gives you double the colors in the color bucket, and more awesome pro features!

**[Learn more, Memberships starting at \\$2.50/m!](#)**

**Follow me  
on Twitter!**

@ConvertingColor