

Converting Colors

HunterLab(61.6215, 6.3368,
5.1876)

Have a look what the booklet for
HunterLab(61.6215, 6.3368, 5.1876)
contains.

HunterLab(61.6196, 6.3383, 5.1905)	3
<i>Conversions</i>	4
<i>Details</i>	6
<i>Harmonies</i>	12
<i>Previews</i>	24
<i>Color Blindness Simulation</i>	28
<i>CSS Examples</i>	31

Color

**HunterLab(61.6196, 6.3383,
5.1905)**

Conversions

Conversions Part 1

Format	Color
Hex	BB9FA2
RGB	187, 159, 162
RGB Percent	73%, 62%, 64%
CMY	0.2667, 0.3765, 0.3647
CMYK	0.00, 0.15, 0.13, 0.27
HSL	354°, 17%, 68%
HSV	354°, 15%, 73%
XYZ	39.4133, 37.9698, 39.4341
YIQ	167.7140, 15.7250, 6.8690

Conversions

Conversions Part 2

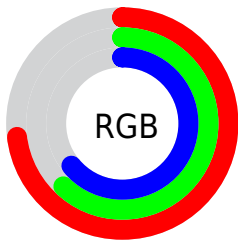
Format	Color
RYB	187, 159, 162
Decimal	12296098
CIELab	68.00, 10.79, 2.26
CIELCh	68, 11.025, 11.855
Yxy	37.9714, 0.3374, 0.3250
Android (android.graphics.Color)	4290486178 (0xFFBB9FA2)
YUV	167.7140, -2.8170, 16.9138
Hunter-Lab	61.6196, 6.3383, 5.1905

Details

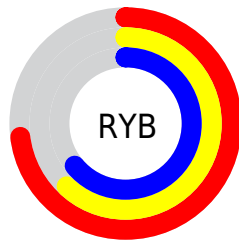
The HunterLab color **61.6196, 6.3383, 5.1905** is a light color, and the websafe version is hex **CC9999**. A complement of this color would be **68.0979, -12.4307, 2.2599**, and the grayscale version is **62.4657, -3.3330, 3.3939**.

A 20% lighter version of the original color is **84.9456, 5.8635, 6.6267**, and **41.1330, 6.1668, 4.1903** is the 20% darker color. If you saturate the color by 10%, you get **56.0927, 13.3769, 6.3537**, and if you desaturate by 10%, it is **67.4765, -0.4665, 4.2367**.

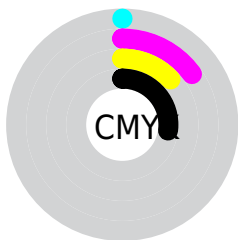
Distribution



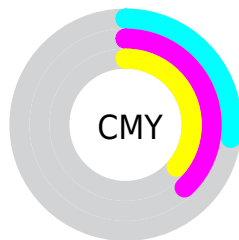
- Red (73%)
- Green (62%)
- Blue (64%)



- Red (73%)
- Yellow (62%)
- Blue (64%)



- Cyan (0%)
- Magenta (15%)
- Yellow (13%)
- Black (27%)



- Cyan (27%)
- Magenta (38%)
- Yellow (36%)

Brightness & Saturation Gradients

These gradients show how the HunterLab color 61.6196, 6.3383, 5.1905 changes by changing the brightness by 10 percent. The first figure shows a shift by +10% for each color and the second figure -10%.

Similar to the brightness gradients but the following saturation gradients show a change of the HunterLab color 61.6196, 6.3383, 5.1905 by changing the saturation by 10% instead.

61.6196, 6.3383,
5.1905

61.6196, 6.3383,
5.1905

183.7110, 3.8340,
12.6658

50.9515, 6.3511,
4.4943

84.8907, 6.1179,
6.6714

40.9806, 6.2926,
3.8266

97.4244, 5.9255,
7.4524

31.7613, 6.1501,
3.1892

110.5206, 5.6835,
8.2596

23.3607, 5.9088,
2.5824

124.1561, 5.3953,
9.0924

15.8680, 5.5472,
2.0059

138.3104, 5.0639,
9.9500

9.4106, 5.0323,
1.5099

152.9651, 4.6918,

0.0000, INF, NaN

10.8319

0.0000, NaN, NaN

168.1036, 4.2812,
11.7374

0.0000, NaN, NaN

■ 61.6196, 6.3383,
5.1905

■ 61.6196, 6.3383,
5.1905

■ 56.0927, 13.3769,
6.3537

■ 67.4765, -0.4665,
4.2367

■ 50.9524, 20.6290,
7.7506

■ 73.6110, -7.0391,
3.4599

■ 46.2754, 28.0027,
9.3997

■ 79.9860, -13.4040,
2.8341

■ 42.1513, 35.3007,
11.2933

■ 86.5709, -19.5889,
2.3356

■ 38.6795, 42.1745,
13.3769

■ 93.3414, -25.6213,
1.9445

■ 35.9556, 48.1164,
15.5278

■ 94.5013, -25.0277,
-1.5637

■ 34.0451, 52.5555,
17.5553

■ 32.9467, 55.0903,
19.2420

■ 32.5814, 55.9518,
19.8503

Harmonies

Analogous

The Analogous color harmony consists of three colors that are next to each other on the color wheel.



61.6210, 6.0491, 0.4575



61.6196, 6.3383, 5.1905



61.6210, 3.9845, 9.1133

Triad

The Triadic color harmony groups three colors that are evenly spaced from another and form a triangle on the color wheel.



61.6210, 6.3364, 5.1915



61.6210, -9.5350, 9.7444



61.6210, -6.2372, -5.9183

Complementary

The Complementary color scheme is a pair of colors which are on the opposite of each other on the color wheel.



61.6196, 6.3383, 5.1905



68.0979, -12.4307, 2.2599

Split Complementary

Split-complementary colors differ from the complementary color scheme. The scheme consists of three colors, the original color and two neighbors of the complement color.



61.6210, -10.2443, -3.0207



61.6196, 6.3383, 5.1905



61.6210, -12.1064, 6.1168

Square

The Square scheme is like the rectangle color scheme, but the four colors are evenly spaced on the color wheel.



61.6210, 6.3364, 5.1915



61.6210, -5.2410, 11.5992



61.6210, -12.3618, 1.4585



61.6210, -1.3170, -6.2156

Rectangle

The Rectangle color scheme consists of four colors that form a rectangle on the color wheel.



61.6196, 6.3383, 5.1905



61.6210, 1.2785, 10.8391



61.6210, -12.3618, 1.4585



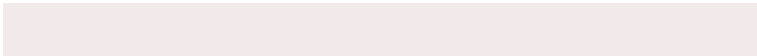
61.6210, -7.7316, -5.2061

Sweetspot

The Sweet Spot groups the original color and five complimentary colors.



61.6210, 6.3364, 5.1915



91.0318, -1.4339, 5.5664



62.0833, 9.4440, -6.4781



42.4324, -0.3553, 2.6527



97.7295, -5.2146, 5.3098



44.2712, -2.3622, 2.4053

Same Dimension

The Same Dimension uses a secret algorithm to generate beautiful new colors.



61.6210, 6.3364, 5.1915



79.9574, 11.5732, 7.4313



64.5902, 0.4878, 9.6975



30.9072, 1.1859, 2.2069



27.0545, 46.4804, 16.3294



5.4066, 9.3917, 2.4645

Inverse Universe

The Inverse Universe completely reimagines the original color for something new.



61.6210, 6.3364, 5.1915



79.9574, 11.5732, 7.4313



64.8965, -6.7193, -3.0813



30.9072, 1.1859, 2.2069



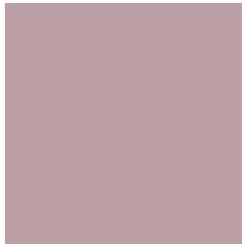
27.0545, 46.4804, 16.3294



5.4066, 9.3917, 2.4645

Previews

White Background



This preview shows how the HunterLab color 61.6196, 6.3383, 5.1905 looks on a white background.

Color Contrast Check

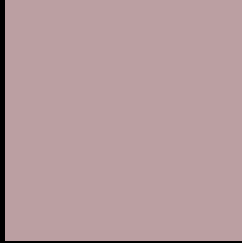
Large Text (above 18pt) WCAG AA × Fail

Any Text WCAG AA × Fail

Large Text (above 18pt) WCAG AAA × Fail

Any Text WCAG AAA × Fail

Black Background



This preview shows how the HunterLab color 61.6196, 6.3383, 5.1905 looks on a black background.

Color Contrast Check

Large Text (above 18pt) WCAG AA ✓ Pass

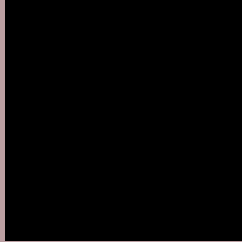
Any Text WCAG AA ✓ Pass

Large Text (above 18pt) WCAG AAA ✓ Pass

Any Text WCAG AAA ✓ Pass

If you want to check with other color combinations, try the [Color Contrast Checker](#).

HunterLab 61.6196, 6.3383, 5.1905 Background



This preview shows how black text looks on a background with the HunterLab color 61.6196, 6.3383, 5.1905.



This preview shows how white text looks on a background with the HunterLab color 61.6196, 6.3383,

Color Blindness Simulation

Color vision deficiency is a very complex topic, and I could not describe the different causes any better than Wikipedia does, so if you want to learn more, you should check out their [article about color blindness](#).

Dichromacy



Original Color

61.6196, 6.3383, 5.1905

Protanopia

61.6943, -2.0448, 3.7699

Deuteranopia

61.4960, 4.4841, 5.0158



Tritanopia

61.6825, 8.4508, 1.6013

Trichromacy



Original Color

61.6196, 6.3383, 5.1905

Protanomaly

61.7291, 0.9972, 4.3205

Deuteranomaly

61.5959, 4.8189, 5.1367

Tritanomaly

61.5915, 7.9689, 2.8988

Monochromacy



Original Color

61.6196, 6.3383, 5.1905

Achromatopsia

62.5758, -3.3389, 3.3999

Achromatomaly

62.2715, 0.0006, 4.0223

CSS Examples

Text

The CSS property to change the color of the text to HunterLab 61.6196, 6.3383, 5.1905 is called "color". The color property can be set on classes, ids or directly on the HTML element.

This example shows how text in the color `rgb(187, 159, 162)` looks like.

```
.text, #text, p{  
    color:rgb(187, 159, 162)  
}
```

If you want to add a text shadow in that color use the text-shadow property, you can generate a text shadow directly with our [CSS Text Shadow Generator](#).

Here you see how black text with a 4 pixel rgb(187, 159, 162) colored shadow looks like.

```
.shadow{ text-shadow: 4px 4px 2px rgb(187, 159, 162) }
```

Border

The CSS property to change the border of an element to HunterLab 61.6196, 6.3383, 5.1905 is called "border".

The border property can be set on classes, ids or directly on the HTML element.

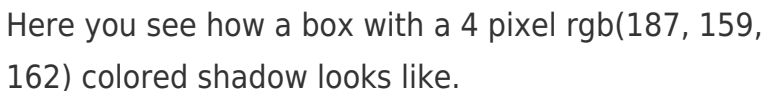
This example shows the color as border, it can be applied via the CSS property "border" or "border-color".

```
.border, #border, table{ border:4px solid rgb(187, 159, 162) }
```


If only the border color should be changed use the property `border-color`.

```
.border{ border-color:rgb(187, 159, 162) }
```

If you want to add a box shadow in that color use:



Here you see how a box with a 4 pixel `rgb(187, 159, 162)` colored shadow looks like.

```
.boxshadow{ -moz-box-shadow:4px 4px 4px 4px rgb(187, 159, 162); -webkit-box-shadow:4px 4px 4px 4px rgb(187, 159, 162); box-shadow:4px 4px 4px 4px rgb(187, 159, 162) }
```

Background

The CSS property to change the background color of an element to HunterLab 61.6196, 6.3383, 5.1905 is called "background". The background property can be set on classes, ids or directly on the HTML element.

```
.background, #background, body{  
background: rgb(187, 159, 162) }
```

If only the background color should be changed can be used:

```
.background{ background-color: rgb(187,  
159, 162) }
```

This example shows the color as background, it is applied via the CSS property "background".

To optimize and compress your CSS code, you can use our [online CSS compressor and optimizer](#) based on csstidy. If you want to create a linear or radial gradient as background or border, check our [CSS Gradient Generator](#).

Hey! You found this booklet interesting? Support Converting Colors with the new Membership Option!

The pro membership hides all ads, plus gives you double the colors in the color bucket, and more awesome pro features!

[Learn more, Memberships starting at \\$2.50/m!](#)

**Follow me
on Twitter!**

@ConvertingColor