

Converting Colors

HunterLab(61.6265, 44.7395,
10.8456)

Have a look what the booklet for
HunterLab(61.6265, 44.7395,
10.8456) contains.

HunterLab(61.6152, 44.6968, 10.9842)	3
<i>Conversions</i>	4
<i>Details</i>	6
<i>Harmonies</i>	12
<i>Previews</i>	24
<i>Color Blindness Simulation</i>	28
<i>CSS Examples</i>	31

Color

**HunterLab(61.6152, 44.6968,
10.9842)**

Conversions

Conversions Part 1

Format	Color
Hex	FA8096
RGB	250, 128, 150
RGB Percent	98%, 50%, 59%
CMY	0.0196, 0.4980, 0.4118
CMYK	0.00, 0.49, 0.40, 0.02
HSL	349°, 92%, 74%
HSV	349°, 49%, 98%
XYZ	52.6485, 37.9643, 33.4071
YIQ	166.9860, 65.6500, 32.7060

Conversions

Conversions Part 2

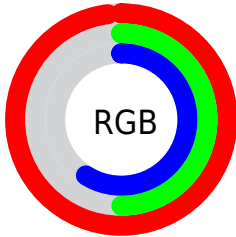
Format	Color
R _Y B	250, 128, 150
Decimal	16416918
CIE Lab	68.00, 48.58, 9.93
CIE LCh	68, 49.587, 11.547
Yxy	37.9663, 0.4245, 0.3061
Android (android.graphics.Color)	4294606998 (0xFFFA8096)
YUV	166.9860, -8.3741, 72.8033
Hunter-Lab	61.6152, 44.6968, 10.9842

Details

The HunterLab color **61.6152, 44.6968, 10.9842** is a light color, and the websafe version is hex **FF9999**. A complement of this color would be **88.6356, -40.1343, 4.8133**, and the grayscale version is **62.1735, -3.3174, 3.3780**.

A 20% lighter version of the original color is **77.1276, 24.8847, 4.0465**, and **40.9213, 41.5217, 8.8393** is the 20% darker color. If you saturate the color by 10%, you get **56.2356, 54.8086, 13.5276**, and if you desaturate by 10%, it is **67.8453, 34.1816, 8.9553**.

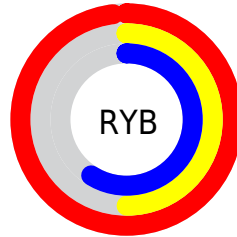
Distribution



Red (98%)

Green (50%)

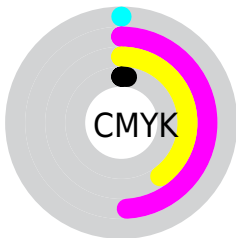
Blue (59%)



Red (98%)

Yellow (50%)

Blue (59%)

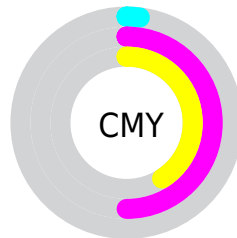


Cyan (0%)

Magenta (49%)

Yellow (40%)

Black (2%)



Cyan (2%)

Magenta (50%)

Yellow (41%)

Brightness & Saturation Gradients

These gradients show how the HunterLab color 61.6152, 44.6968, 10.9842 changes by changing the brightness by 10 percent. The first figure shows a shift by +10% for each color and the second figure -10%.

Similar to the brightness gradients but the following saturation gradients show a change of the HunterLab color 61.6152, 44.6968, 10.9842 by changing the saturation by 10% instead.

61.6152, 44.6968,
10.9842

61.6152, 44.6968,
10.9842

183.7050, 54.7668,
21.3865

50.9475, 43.1008,
9.8684

84.8861, 47.5520,
13.2272

40.9770, 41.3948,
8.7469

97.4195, 48.8310,
14.3583

31.7579, 39.5793,
7.6122

110.5155, 50.0182,
15.4992

23.3576, 37.6794,
6.4502

124.1508, 51.1195,
16.6511

15.8654, 35.7838,
5.2357

138.3049, 52.1404,
17.8152

9.4084, 34.2110,
4.8854

152.9594, 53.0857,

0.0000, INF, NaN

18.9921

0.0000, NaN, NaN

168.0977, 53.9598,
20.1824

0.0000, NaN, NaN

■ 61.6152, 44.6968,
10.9842

■ 61.6152, 44.6968,
10.9842

■ 56.2356, 54.8086,
13.5276

■ 67.8453, 34.1816,
8.9553

■ 51.8442, 63.8991,
16.5141

■ 74.7855, 23.6692,
7.4256

■ 48.5635, 71.1568,
19.7595

■ 82.3204, 13.3620,
6.3455

■ 46.4463, 75.8425,
22.9605

■ 90.3545, 3.3438,
5.6518

■ 45.3860, 77.8169,
25.7411

■ 98.8114, -6.3698,
5.2832

■ 45.2924, 77.9841,
26.0148

■ 99.5309, -6.9714,
4.8511

Harmonies

Analogous

The Analogous color harmony consists of three colors that are next to each other on the color wheel.



61.6168, 42.9770, -11.0316



61.6152, 44.6968, 10.9842



61.6168, 32.2636, 24.7657

Triad

The Triadic color harmony groups three colors that are evenly spaced from another and form a triangle on the color wheel.



61.6168, 44.6930, 10.9854



61.6168, -29.2699, 26.7672



61.6168, -16.3059, -49.3579

Complementary

The Complementary color scheme is a pair of colors which are on the opposite of each other on the color wheel.



61.6152, 44.6968, 10.9842



88.6356, -40.1343, 4.8133

Split Complementary

Split-complementary colors differ from the complementary color scheme. The scheme consists of three colors, the original color and two neighbors of the complement color.



61.6168, -32.2552, -30.3665



61.6152, 44.6968, 10.9842



61.6168, -38.9717, 14.9362

Square

The Square scheme is like the rectangle color scheme, but the four colors are evenly spaced on the color wheel.



61.6168, 44.6930, 10.9854



61.6168, -11.6557, 31.4590



61.6168, -39.9805, -5.3988



61.6168, 5.5451, -51.6117

Rectangle

The Rectangle color scheme consists of four colors that form a rectangle on the color wheel.



61.6152, 44.6968, 10.9842



61.6168, 18.5379, 29.5491



61.6168, -39.9805, -5.3988



61.6168, -22.4492, -44.4714

Sweetspot

The Sweet Spot groups the original color and five complimentary colors.



61.6168, 44.6930, 10.9854



87.2465, 9.7550, 6.1787



62.2709, 53.9998, -46.7965



39.5723, 5.5205, 2.9358

0.0000, NaN, NaN



46.2646, -2.4686, 2.5136

Same Dimension

The Same Dimension uses a secret algorithm to generate beautiful new colors.



61.6168, 44.6930, 10.9854



57.3836, 56.3193, 13.9111



70.2764, 21.9815, 26.4572



41.5648, 1.8673, 2.6338



33.0092, 56.8795, 18.6149



10.1129, 17.5583, 4.6767

Inverse Universe

The Inverse Universe completely reimagines the original color for something new.



61.6168, 44.6930, 10.9854



57.3836, 56.3193, 13.9111



76.3308, -17.7188, -23.5267



41.5648, 1.8673, 2.6338



33.0092, 56.8795, 18.6149



10.1129, 17.5583, 4.6767

Previews

White Background



This preview shows how the HunterLab color 61.6152, 44.6968, 10.9842 looks on a white background.

Color Contrast Check

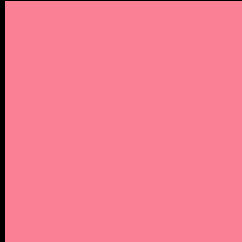
Large Text (above 18pt) WCAG AA × Fail

Any Text WCAG AA × Fail

Large Text (above 18pt) WCAG AAA × Fail

Any Text WCAG AAA × Fail

Black Background



This preview shows how the HunterLab color 61.6152, 44.6968, 10.9842 looks on a black background.

Color Contrast Check

Large Text (above 18pt) WCAG AA ✓ Pass

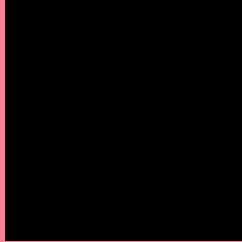
Any Text WCAG AA ✓ Pass

Large Text (above 18pt) WCAG AAA ✓ Pass

Any Text WCAG AAA ✓ Pass

If you want to check with other color combinations, try the [Color Contrast Checker](#).

HunterLab 61.6152, 44.6968, 10.9842 Background



This preview shows how black text looks on a background with the HunterLab color 61.6152, 44.6968, 10.9842.



This preview shows how white text looks on a background with the HunterLab color 61.6152, 44.6968,

Color Blindness Simulation

Color vision deficiency is a very complex topic, and I could not describe the different causes any better than Wikipedia does, so if you want to learn more, you should check out their [article about color blindness](#).

Dichromacy



Original Color

61.6152, 44.6968, 10.9842

Protanopia

61.7555, -1.5328, 1.5147

Deuteranopia

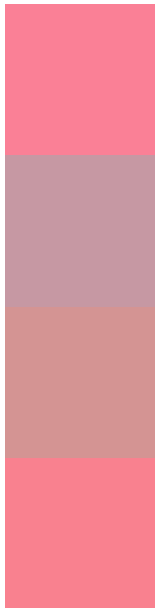
61.7520, 4.4268, 12.4087



Tritanopia

61.6191, 41.9611, 15.2011

Trichromacy



Original Color

61.6152, 44.6968, 10.9842

Protanomaly

60.9152, 13.9154, 4.0534

Deuteranomaly

61.0602, 18.8712, 11.1518

Tritanomaly

61.5007, 42.9362, 13.5957

Monochromacy



Original Color

61.6152, 44.6968, 10.9842

Achromatopsia

62.1634, -3.3169, 3.3775

Achromatomaly

61.0131, 12.7385, 5.0530

CSS Examples

Text

The CSS property to change the color of the text to HunterLab 61.6152, 44.6968, 10.9842 is called "color". The color property can be set on classes, ids or directly on the HTML element.

This example shows how text in the color `rgb(250, 128, 150)` looks like.

```
.text, #text, p{  
    color:rgb(250, 128, 150)  
}
```

If you want to add a text shadow in that color use the text-shadow property, you can generate a text shadow directly with our [CSS Text Shadow Generator](#).

Here you see how black text with a 4 pixel rgb(250, 128, 150) colored shadow looks like.

```
.shadow{ text-shadow: 4px 4px 2px rgb(250, 128, 150) }
```

Border

The CSS property to change the border of an element to HunterLab 61.6152, 44.6968, 10.9842 is called "border". The border property can be set on classes, ids or directly on the HTML element.

This example shows the color as border, it can be applied via the CSS property "border" or "border-color".

```
.border, #border, table{ border:4px solid rgb(250, 128, 150) }
```


If only the border color should be changed use the property `border-color`.

```
.border{ border-color:rgb(250, 128, 150) }
```

If you want to add a box shadow in that color use:

Here you see how a box with a 4 pixel `rgb(250, 128, 150)` colored shadow looks like.

```
.boxshadow{ -moz-box-shadow:4px 4px 4px  
4px rgb(250, 128, 150); -webkit-box-  
shadow:4px 4px 4px 4px rgb(250, 128, 150);  
box-shadow:4px 4px 4px 4px rgb(250, 128,  
150) }
```

Background

The CSS property to change the background color of an element to HunterLab 61.6152, 44.6968, 10.9842 is called "background". The background property can be set on classes, ids or directly on the HTML element.

```
.background, #background, body{  
background: rgb(250, 128, 150) }
```

If only the background color should be changed can be used:

```
.background{ background-color: rgb(250,  
128, 150) }
```

This example shows the color as background, it is applied via the CSS property "background".

To optimize and compress your CSS code, you can use our [online CSS compressor and optimizer](#) based on csstidy. If you want to create a linear or radial gradient as background or border, check our [CSS Gradient Generator](#).

Hey! You found this booklet interesting? Support Converting Colors with the new Membership Option!

The pro membership hides all ads, plus gives you double the colors in the color bucket, and more awesome pro features!

[Learn more, Memberships starting at \\$2.50/m!](#)

**Follow me
on Twitter!**

@ConvertingColor