

Converting Colors

HunterLab(61.6309, 8.9654,
7.4564)

Have a look what the booklet for
HunterLab(61.6309, 8.9654, 7.4564)
contains.

HunterLab(61.6584, 9.0287, 7.4787)	3
<i>Conversions</i>	4
<i>Details</i>	6
<i>Harmonies</i>	12
<i>Previews</i>	24
<i>Color Blindness Simulation</i>	28
<i>CSS Examples</i>	31

Color

**HunterLab(61.6584, 9.0287,
7.4787)**

Conversions

Conversions Part 1

Format	Color
Hex	C29D9D
RGB	194, 157, 157
RGB Percent	76%, 62%, 62%
CMY	0.2392, 0.3843, 0.3843
CMYK	0.00, 0.19, 0.19, 0.24
HSL	0°, 23%, 69%
HSV	0°, 19%, 76%
XYZ	40.3909, 38.0176, 37.1075
YIQ	168.0630, 22.0520, 7.8440

Conversions

Conversions Part 2

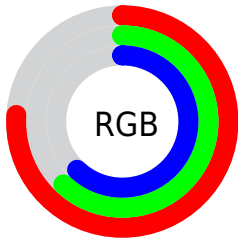
Format	Color
RYB	194, 157, 157
Decimal	12754333
CIELab	68.03, 13.70, 5.19
CIELCh	68, 14.644, 20.742
Yxy	38.0193, 0.3497, 0.3291
Android (android.graphics.Color)	4290944413 (0xFFC29D9D)
YUV	168.0630, -5.4541, 22.7467
Hunter-Lab	61.6584, 9.0287, 7.4787

Details

The HunterLab color **61.6584, 9.0287, 7.4787** is a light color, and the websafe version is hex **CC9999**. A complement of this color would be **70.4595, -14.5375, 0.2140**, and the grayscale version is **62.6183, -3.3412, 3.4022**.

A 20% lighter version of the original color is **85.0586, 8.9813, 9.1526**, and **41.1389, 8.5846, 5.8480** is the 20% darker color. If you saturate the color by 10%, you get **55.9974, 16.2465, 9.4913**, and if you desaturate by 10%, it is **67.6970, 2.1061, 5.5954**.

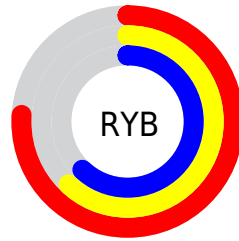
Distribution



Red (76%)

Green (62%)

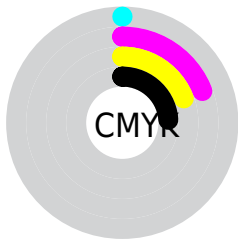
Blue (62%)



Red (76%)

Yellow (62%)

Blue (62%)

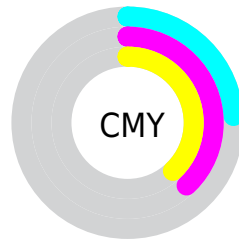


Cyan (0%)

Magenta (19%)

Yellow (19%)

Black (24%)



Cyan (24%)

Magenta (38%)

Yellow (38%)

Brightness & Saturation Gradients

These gradients show how the HunterLab color 61.6584, 9.0287, 7.4787 changes by changing the brightness by 10 percent. The first figure shows a shift by +10% for each color and the second figure -10%.

Similar to the brightness gradients but the following saturation gradients show a change of the HunterLab color 61.6584, 9.0287, 7.4787 by changing the saturation by 10% instead.

■ 61.6584, 9.0287,
7.4787

■ 61.6584, 9.0287,
7.4787

183.7669, 7.5742,
16.0488

■ 50.9879, 8.8988,
6.6268

■ 84.9339, 9.0732,
9.2431

■ 41.0145, 8.6897,
5.7914

■ 97.4696, 9.0051,
10.1548

■ 31.7924, 8.3871,
4.9710

110.5678, 8.8825,
11.0868

■ 23.3888, 7.9748,
4.1609

124.2051, 8.7096,
12.0391

■ 15.8927, 7.4294,
3.3521

138.3612, 8.4896,
13.0116

■ 9.4314, 6.7178,
2.7928

153.0176, 8.2255,

0.0000, INF, NaN

14.0042

0.0000, NaN, NaN

168.1579, 7.9196,
15.0166

0.0000, NaN, NaN

■ 61.6584, 9.0287,
7.4787

■ 61.6584, 9.0287,
7.4787

■ 55.9974, 16.2465,
9.4913

■ 67.6970, 2.1061,
5.5954

■ 50.7821, 23.7287,
11.6229

■ 74.0513, -4.5228,
3.8317

■ 46.1023, 31.3512,
13.8400

■ 80.6774, -10.8880,
2.1759

■ 42.0612, 38.8542,
16.0628

■ 87.5390, -17.0244,
0.6137

■ 38.7671, 45.7970,
18.1516

■ 94.6075, -22.9667,
-0.8686

■ 36.3128, 51.5829,
19.9129

■ 94.9786, -23.2710,
-0.9405

■ 34.7400, 55.6240,
21.1529

■ 33.9306, 57.8195,
21.8297

■ 33.8671, 57.9953,
21.8841

Harmonies

Analogous

The Analogous color harmony consists of three colors that are next to each other on the color wheel.



61.6598, 9.7358, 1.3827



61.6584, 9.0287, 7.4787



61.6598, 4.9430, 11.9896

Triad

The Triadic color harmony groups three colors that are evenly spaced from another and form a triangle on the color wheel.



61.6598, 9.0266, 7.4797



61.6598, -12.8133, 10.5161



61.6598, -5.3213, -9.7841

Complementary

The Complementary color scheme is a pair of colors which are on the opposite of each other on the color wheel.



61.6584, 9.0287, 7.4787



70.4595, -14.5375, 0.2140

Split Complementary

Split-complementary colors differ from the complementary color scheme. The scheme consists of three colors, the original color and two neighbors of the complement color.



61.6598, -11.1188, -6.7398



61.6584, 9.0287, 7.4787



61.6598, -15.3230, 5.2667

Square

The Square scheme is like the rectangle color scheme, but the four colors are evenly spaced on the color wheel.



61.6598, 9.0266, 7.4797



61.6598, -7.7229, 13.6105



61.6598, -14.7160, -1.0731



61.6598, 1.2649, -9.0317

Rectangle

The Rectangle color scheme consists of four colors that form a rectangle on the color wheel.



61.6584, 9.0287, 7.4787



61.6598, 0.9476, 13.6980



61.6598, -14.7160, -1.0731



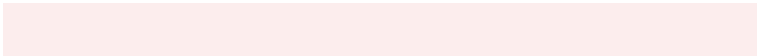
61.6598, -7.4226, -9.1599

Sweetspot

The Sweet Spot groups the original color and five complimentary colors.



61.6598, 9.0266, 7.4797



93.6251, 0.1393, 6.8086



62.8321, 15.1659, -9.1795



43.5490, 0.3465, 3.2614

0.0000, NaN, NaN



46.2646, -2.4686, 2.5136

Same Dimension

The Same Dimension uses a secret algorithm to generate beautiful new colors.



61.6598, 9.0266, 7.4797



79.6558, 16.2734, 11.2091



66.9022, -0.3191, 12.9499



31.7460, 1.0844, 2.6564



27.4611, 47.0246, 17.7446



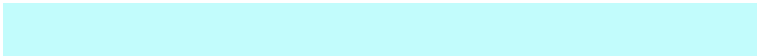
5.7086, 9.7730, 3.6887

Inverse Universe

The Inverse Universe completely reimagines the original color for something new.



70.4595, -14.5375, 0.2140



94.0625, -22.3983, -0.7174



64.7445, -5.5870, -6.9419



33.8058, -4.4128, 0.9619



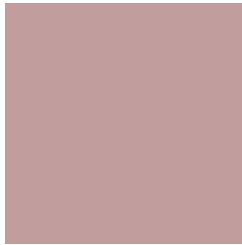
52.8420, -28.0108, -5.5807



10.9842, -5.8227, -1.1597

Previews

White Background



This preview shows how the HunterLab color 61.6584, 9.0287, 7.4787 looks on a white background.

Color Contrast Check

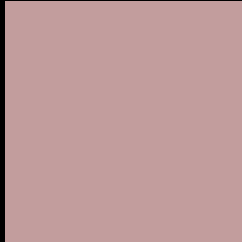
Large Text (above 18pt) WCAG AA × Fail

Any Text WCAG AA × Fail

Large Text (above 18pt) WCAG AAA × Fail

Any Text WCAG AAA × Fail

Black Background



This preview shows how the HunterLab color 61.6584, 9.0287, 7.4787 looks on a black background.

Color Contrast Check

Large Text (above 18pt) WCAG AA ✓ Pass

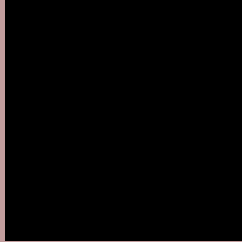
Any Text WCAG AA ✓ Pass

Large Text (above 18pt) WCAG AAA ✓ Pass

Any Text WCAG AAA ✓ Pass

If you want to check with other color combinations, try the [Color Contrast Checker](#).

HunterLab 61.6584, 9.0287, 7.4787 Background



This preview shows how black text looks on a background with the HunterLab color 61.6584, 9.0287, 7.4787.



This preview shows how white text looks on a background with the HunterLab color 61.6584, 9.0287,

Color Blindness Simulation

Color vision deficiency is a very complex topic, and I could not describe the different causes any better than Wikipedia does, so if you want to learn more, you should check out their [article about color blindness](#).

Dichromacy



Original Color

61.6584, 9.0287, 7.4787

Protanopia

61.6968, -2.2112, 5.1296

Deuteranopia

61.6287, 4.5907, 7.7968



Tritanopia

61.5100, 11.9245, 2.8712

Trichromacy



Original Color

61.6584, 9.0287, 7.4787

Protanomaly

61.6137, 1.8478, 5.9950

Deuteranomaly

61.6566, 6.1235, 7.8545

Tritanomaly

61.6631, 10.7893, 4.8686

Monochromacy



Original Color

61.6584, 9.0287, 7.4787

Achromatopsia

62.5758, -3.3389, 3.3999

Achromatomaly

62.1115, 0.8214, 4.7607

CSS Examples

Text

The CSS property to change the color of the text to HunterLab 61.6584, 9.0287, 7.4787 is called "color". The color property can be set on classes, ids or directly on the HTML element.

This example shows how text in the color `rgb(194, 157, 157)` looks like.

```
.text, #text, p{  
    color:rgb(194, 157, 157)  
}
```

If you want to add a text shadow in that color use the text-shadow property, you can generate a text shadow directly with our [CSS Text Shadow Generator](#).

Here you see how black text with a 4 pixel rgb(194, 157, 157) colored shadow looks like.

```
.shadow{ text-shadow: 4px 4px 2px rgb(194, 157, 157) }
```

Border

The CSS property to change the border of an element to HunterLab 61.6584, 9.0287, 7.4787 is called "border". The border property can be set on classes, ids or directly on the HTML element.

This example shows the color as border, it can be applied via the CSS property "border" or "border-color".

```
.border, #border, table{ border:4px solid rgb(194, 157, 157) }
```


If only the border color should be changed use the property `border-color`.

```
.border{ border-color:rgb(194, 157, 157) }
```

If you want to add a box shadow in that color use:

Here you see how a box with a 4 pixel `rgb(194, 157, 157)` colored shadow looks like.

```
.boxshadow{ -moz-box-shadow:4px 4px 4px  
4px rgb(194, 157, 157); -webkit-box-  
shadow:4px 4px 4px 4px rgb(194, 157, 157);  
box-shadow:4px 4px 4px 4px rgb(194, 157,  
157) }
```

Background

The CSS property to change the background color of an element to HunterLab 61.6584, 9.0287, 7.4787 is called "background". The background property can be set on classes, ids or directly on the HTML element.

```
.background, #background, body{  
background: rgb(194, 157, 157) }
```

If only the background color should be changed can be used:

```
.background{ background-color: rgb(194,  
157, 157) }
```

This example shows the color as background, it is applied via the CSS property "background".

To optimize and compress your CSS code, you can use our [online CSS compressor and optimizer](#) based on csstidy. If you want to create a linear or radial gradient as background or border, check our [CSS Gradient Generator](#).

Hey! You found this booklet interesting? Support Converting Colors with the new Membership Option!

The pro membership hides all ads, plus gives you double the colors in the color bucket, and more awesome pro features!

[Learn more, Memberships starting at \\$2.50/m!](#)

**Follow me
on Twitter!**

@ConvertingColor