

Converting Colors

HunterLab(61.7339, 51.7110,
15.8798)

Have a look what the booklet for
HunterLab(61.7339, 51.7110,
15.8798) contains.

HunterLab(60.6380, 48.9127, 14.7110)	3
<i>Conversions</i>	4
<i>Details</i>	6
<i>Harmonies</i>	12
<i>Previews</i>	24
<i>Color Blindness Simulation</i>	28
<i>CSS Examples</i>	31

Color

**HunterLab(60.6380, 48.9127,
14.7110)**

Conversions

Conversions Part 1

Format	Color
Hex	FF798A
RGB	255, 121, 138
RGB Percent	100%, 47%, 54%
CMY	0.0000, 0.5255, 0.4588
CMYK	0.00, 0.53, 0.46, 0.00
HSL	352°, 100%, 74%
HSV	352°, 53%, 100%
XYZ	52.6648, 36.7697, 28.3662
YIQ	163.0040, 74.4070, 33.6950

Conversions

Conversions Part 2

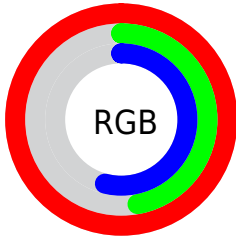
Format	Color
R _Y B	255, 121, 138
Decimal	16742794
CIE Lab	67.11, 52.46, 15.55
CIE LCh	67, 54.720, 16.508
Yxy	36.7716, 0.4471, 0.3121
Android (android.graphics.Color)	4294932874 (0xFFFF798A)
YUV	163.0040, -12.3270, 80.6805
Hunter-Lab	60.6380, 48.9127, 14.7110

Details

The HunterLab color **60.6380, 48.9127, 14.7110** is a light color, and the websafe version is hex **FF9999**. A complement of this color would be **90.4206, -41.6060, 1.9449**, and the grayscale version is **60.5494, -3.2308, 3.2898**.

A 20% lighter version of the original color is **75.1438, 26.1475, 7.8700**, and **40.0878, 45.4292, 11.8423** is the 20% darker color. If you saturate the color by 10%, you get **55.4896, 58.9571, 17.6563**, and if you desaturate by 10%, it is **66.7248, 38.2995, 12.1253**.

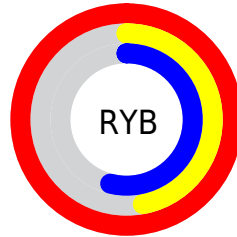
Distribution



Red (100%)

Green (47%)

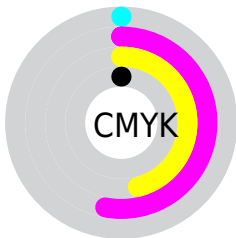
Blue (54%)



Red (100%)

Yellow (47%)

Blue (54%)

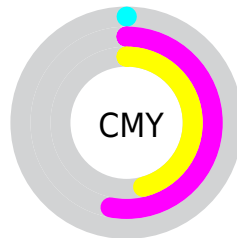


Cyan (0%)

Magenta (53%)

Yellow (46%)

Black (0%)



Cyan (0%)

Magenta (53%)

Yellow (46%)

Brightness & Saturation Gradients

These gradients show how the HunterLab color 60.6380, 48.9127, 14.7110 changes by changing the brightness by 10 percent. The first figure shows a shift by +10% for each color and the second figure -10%.

Similar to the brightness gradients but the following saturation gradients show a change of the HunterLab color 60.6380, 48.9127, 14.7110 by changing the saturation by 10% instead.

60.6380, 48.9127,
14.7110

60.6380, 48.9127,
14.7110

182.2966, 60.1982,
27.3746

50.0307, 47.1753,
13.2624

83.7982, 52.0520,
17.5512

40.1247, 45.3335,
11.7781

96.2803, 53.4714,
18.9546

30.9756, 43.3954,
10.2416

109.3272, 54.7967,
20.3535

22.6521, 41.4036,
8.6251

122.9154, 56.0338,
21.7513

15.2461, 39.4913,
6.8813

137.0240, 57.1878,
23.1505

8.8691, 38.2811,
6.2083

151.6346, 58.2636,

0.0000, INF, NaN

24.5531

0.0000, NaN, NaN

166.7306, 59.2658,
25.9607

0.0000, NaN, NaN

■ 60.6380, 48.9127,
14.7110

■ 60.6380, 48.9127,
14.7110

■ 55.4896, 58.9571,
17.6563

■ 66.7248, 38.2995,
12.1253

■ 51.4197, 67.7126,
20.8032

■ 73.5985, 27.6177,
9.9495

■ 48.5355, 74.3210,
23.8846

■ 81.1305, 17.1302,
8.1759

■ 46.8478, 78.1440,
26.5669

■ 89.2127, 6.9533,
6.7651

■ 46.2235, 79.3887,
28.0886

■ 97.7587, -2.8842,
5.6681

100.0000, -5.3359,
5.4332

Harmonies

Analogous

The Analogous color harmony consists of three colors that are next to each other on the color wheel.



60.6396, 49.7546, -8.1227



60.6380, 48.9127, 14.7110



60.6396, 32.7412, 27.6561

Triad

The Triadic color harmony groups three colors that are evenly spaced from another and form a triangle on the color wheel.



60.6396, 48.9086, 14.7122



60.6396, -33.7924, 26.7662



60.6396, -13.8510, -58.5117

Complementary

The Complementary color scheme is a pair of colors which are on the opposite of each other on the color wheel.



60.6380, 48.9127, 14.7110



90.4206, -41.6060, 1.9449

Split Complementary

Split-complementary colors differ from the complementary color scheme. The scheme consists of three colors, the original color and two neighbors of the complement color.



60.6396, -32.3958, -39.0839



60.6380, 48.9127, 14.7110



60.6396, -42.6121, 12.8597

Square

The Square scheme is like the rectangle color scheme, but the four colors are evenly spaced on the color wheel.



60.6396, 48.9086, 14.7122



60.6396, -16.0629, 32.4786



60.6396, -42.1452, -10.8766



60.6396, 10.7483, -57.3668

Rectangle

The Rectangle color scheme consists of four colors that form a rectangle on the color wheel.



60.6380, 48.9127, 14.7110



60.6396, 16.7223, 31.7090



60.6396, -42.1452, -10.8766



60.6396, -20.9112, -53.9201

Sweetspot

The Sweet Spot groups the original color and five complimentary colors.



60.6396, 48.9086, 14.7122



86.3647, 10.4304, 7.2144



62.3893, 62.0768, -50.3769



39.1837, 5.7933, 3.4702

0.0000, NaN, NaN



46.2646, -2.4686, 2.5136

Same Dimension

The Same Dimension uses a secret algorithm to generate beautiful new colors.



60.6396, 48.9086, 14.7122



55.2804, 59.3891, 17.7965



71.7230, 21.5499, 29.6171



42.4553, 1.8162, 2.9612



33.4303, 57.4508, 20.0480



10.4850, 18.1248, 5.4653

Inverse Universe

The Inverse Universe completely reimagines the original color for something new.



60.6396, 48.9086, 14.7122



55.2804, 59.3891, 17.7965



74.4078, -15.1219, -29.8006



42.4553, 1.8162, 2.9612



33.4303, 57.4508, 20.0480



10.4850, 18.1248, 5.4653

Previews

White Background



This preview shows how the HunterLab color 60.6380, 48.9127, 14.7110 looks on a white background.

Color Contrast Check

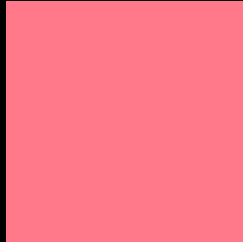
Large Text (above 18pt) WCAG AA × Fail

Any Text WCAG AA × Fail

Large Text (above 18pt) WCAG AAA × Fail

Any Text WCAG AAA × Fail

Black Background



This preview shows how the HunterLab color 60.6380, 48.9127, 14.7110 looks on a black background.

Color Contrast Check

Large Text (above 18pt) WCAG AA ✓ Pass

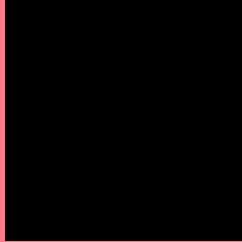
Any Text WCAG AA ✓ Pass

Large Text (above 18pt) WCAG AAA ✓ Pass

Any Text WCAG AAA ✓ Pass

If you want to check with other color combinations, try the [Color Contrast Checker](#).

HunterLab 60.6380, 48.9127, 14.7110 Background



This preview shows how black text looks on a background with the HunterLab color 60.6380, 48.9127, 14.7110.



This preview shows how white text looks on a background with the HunterLab color 60.6380, 48.9127,

Color Blindness Simulation

Color vision deficiency is a very complex topic, and I could not describe the different causes any better than Wikipedia does, so if you want to learn more, you should check out their [article about color blindness](#).

Dichromacy



Original Color

60.6380, 48.9127, 14.7110

Protanopia

60.8747, -2.1695, 5.0808

Deuteranopia

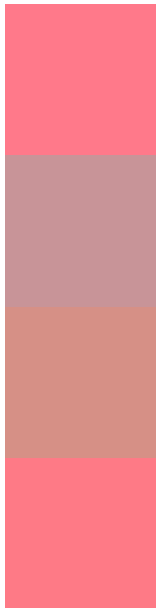
60.6028, 4.2712, 16.0611



Tritanopia

60.5216, 47.2456, 17.0844

Trichromacy



Original Color

60.6380, 48.9127, 14.7110

Protanomaly

59.7714, 15.0847, 7.6284

Deuteranomaly

59.9699, 20.0889, 15.0063

Tritanomaly

60.5897, 47.5620, 16.0973

Monochromacy



Original Color

60.6380, 48.9127, 14.7110

Achromatopsia

60.5188, -3.2291, 3.2881

Achromatomaly

59.3706, 13.9205, 6.2972

CSS Examples

Text

The CSS property to change the color of the text to HunterLab 60.6380, 48.9127, 14.7110 is called "color". The color property can be set on classes, ids or directly on the HTML element.

This example shows how text in the color `rgb(255, 121, 138)` looks like.

```
.text, #text, p{  
    color:rgb(255, 121, 138)  
}
```

If you want to add a text shadow in that color use the text-shadow property, you can generate a text shadow directly with our [CSS Text Shadow Generator](#).

Here you see how black text with a 4 pixel rgb(255, 121, 138) colored shadow looks like.

```
.shadow{ text-shadow: 4px 4px 2px rgb(255, 121, 138) }
```

Border

The CSS property to change the border of an element to HunterLab 60.6380, 48.9127, 14.7110 is called "border". The border property can be set on classes, ids or directly on the HTML element.

This example shows the color as border, it can be applied via the CSS property "border" or "border-color".

```
.border, #border, table{ border:4px solid rgb(255, 121, 138) }
```


If only the border color should be changed use the property `border-color`.

```
.border{ border-color:rgb(255, 121, 138) }
```

If you want to add a box shadow in that color use:

Here you see how a box with a 4 pixel `rgb(255, 121, 138)` colored shadow looks like.

```
.boxshadow{ -moz-box-shadow:4px 4px 4px  
4px rgb(255, 121, 138); -webkit-box-  
shadow:4px 4px 4px 4px rgb(255, 121, 138);  
box-shadow:4px 4px 4px 4px rgb(255, 121,  
138) }
```

Background

The CSS property to change the background color of an element to HunterLab 60.6380, 48.9127, 14.7110 is called "background". The background property can be set on classes, ids or directly on the HTML element.

```
.background, #background, body{  
background: rgb(255, 121, 138) }
```

If only the background color should be changed can be used:

```
.background{ background-color: rgb(255,  
121, 138) }
```

This example shows the color as background, it is applied via the CSS property "background".

To optimize and compress your CSS code, you can use our [online CSS compressor and optimizer](#) based on csstidy. If you want to create a linear or radial gradient as background or border, check our [CSS Gradient Generator](#).

Hey! You found this booklet interesting? Support Converting Colors with the new Membership Option!

The pro membership hides all ads, plus gives you double the colors in the color bucket, and more awesome pro features!

[Learn more, Memberships starting at \\$2.50/m!](#)

**Follow me
on Twitter!**

@ConvertingColor