

Converting Colors

HunterLab(61.7585, 4.2521,
13.9376)

Have a look what the booklet for
HunterLab(61.7585, 4.2521,
13.9376) contains.

HunterLab(61.7585, 4.2521, 13.9376)	3
<i>Conversions</i>	4
<i>Details</i>	6
<i>Harmonies</i>	12
<i>Previews</i>	24
<i>Color Blindness Simulation</i>	28
<i>CSS Examples</i>	31

Color

**HunterLab(61.7585, 4.2521,
13.9376)**

Conversions

Conversions Part 1

Format	Color
Hex	BFA08D
RGB	191, 160, 141
RGB Percent	75%, 63%, 55%
CMY	0.2510, 0.3725, 0.4471
CMYK	0.00, 0.16, 0.26, 0.25
HSL	23°, 28%, 65%
HSV	23°, 26%, 75%
XYZ	38.8644, 38.1411, 30.5130
YIQ	167.1030, 24.5750, 0.6630

Conversions

Conversions Part 2

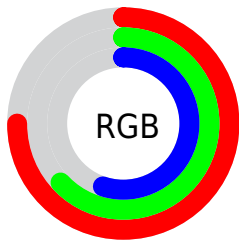
Format	Color
R_{YB}	191, 172, 141
Decimal	12558477
CIE _{Lab}	68.13, 8.51, 14.16
CIE _{LCh}	68, 16.522, 59.012
Yxy	38.1429, 0.3615, 0.3547
Android (android.graphics.Color)	4290748557 (0xFFBFA08D)
YUV	167.1030, -12.8688, 20.9577
Hunter-Lab	61.7585, 4.2521, 13.9376

Details

The HunterLab color $61.7585, 4.2521, 13.9376$ is a light color, and the websafe version is hex $CC9999$. A complement of this color would be $62.3925, -8.6523, -8.5449$, and the grayscale version is $62.2513, -3.3216, 3.3822$.

A 20% lighter version of the original color is $85.1454, 3.7446, 16.5800$, and $41.2444, 4.3108, 11.2621$ is the 20% darker color. If you saturate the color by 10%, you get $58.0608, 7.8668, 17.1450$, and if you desaturate by 10%, it is $65.6234, 0.9336, 10.3631$.

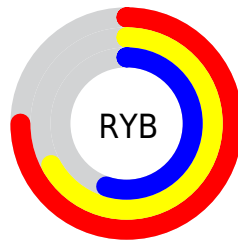
Distribution



Red (75%)

Green (63%)

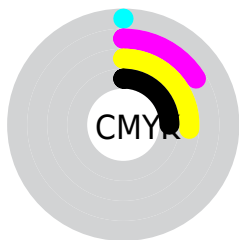
Blue (55%)



Red (75%)

Yellow (67%)

Blue (55%)

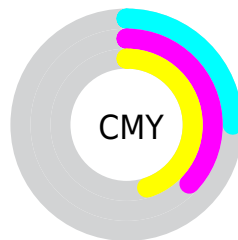


Cyan (0%)

Magenta (16%)

Yellow (26%)

Black (25%)



Cyan (25%)

Magenta (37%)

Yellow (45%)

Brightness & Saturation Gradients

These gradients show how the HunterLab color 61.7585, 4.2521, 13.9376 changes by changing the brightness by 10 percent. The first figure shows a shift by +10% for each color and the second figure -10%.

Similar to the brightness gradients but the following saturation gradients show a change of the HunterLab color 61.7585, 4.2521, 13.9376 by changing the saturation by 10% instead.

■ 61.7585, 4.2521,
13.9376

■ 61.7585, 4.2521,
13.9376

183.9110, 0.9071,
26.0346

■ 51.0819, 4.3797,
12.5744

■ 85.0453, 3.8183,
16.6257

■ 41.1019, 4.4432,
11.1844

■ 97.5863, 3.5263,
17.9605

■ 31.8727, 4.4310,
9.7538

■ 110.6894, 3.1886,
19.2947

■ 23.4613, 4.3301,
8.2592

124.3316, 2.8083,
20.6311

■ 15.9565, 4.1213,
6.6606

138.4923, 2.3879,
21.9719

■ 9.4850, 3.7743,
6.6395

153.1532, 1.9297,

0.0000, INF, NaN

23.3185

0.0000, NaN, NaN

168.2977, 1.4355,
24.6725

0.0000, NaN, NaN

■ 61.7585, 4.2521,
13.9376

■ 61.7585, 4.2521,
13.9376

■ 58.0608, 7.8668,
17.1450

■ 65.6234, 0.9336,
10.3631

■ 54.5448, 11.8007,
19.9253

■ 69.6347, -2.1039,
6.4685

■ 51.2334, 16.0579,
22.2153

■ 73.7795, -4.8864,
2.2966

■ 48.1500, 20.6279,
23.9471

■ 78.0454, -7.4377,
-2.1174

■ 45.3197, 25.4744,
25.0573

■ 82.4216, -9.7806,
-6.7441

■ 42.7682, 30.5243,
25.5003

■ 86.8764, -12.0606,
-11.2446

■ 40.5181, 35.6535,
25.2844

■ 90.7364, -18.0266,
-6.2239

■ 39.7347, 37.5694,
25.1421

■ 94.6803, -23.8987,
-1.3213

■ 94.7715, -24.0320,
-1.2105

Harmonies

Analogous

The Analogous color harmony consists of three colors that are next to each other on the color wheel.



61.7599, 9.7326, 9.6113



61.7585, 4.2521, 13.9376



61.7599, -3.0514, 15.4919

Triad

The Triadic color harmony groups three colors that are evenly spaced from another and form a triangle on the color wheel.



61.7599, 4.2500, 13.9385



61.7599, -16.9768, 3.5963



61.7599, 3.8023, -9.7798

Complementary

The Complementary color scheme is a pair of colors which are on the opposite of each other on the color wheel.



61.7585, 4.2521, 13.9376



62.3925, -8.6523, -8.5449

Split Complementary

Split-complementary colors differ from the complementary color scheme. The scheme consists of three colors, the original color and two neighbors of the complement color.



61.7599, -3.5455, -11.8715



61.7585, 4.2521, 13.9376



61.7599, -15.3318, -3.6179

Square

The Square scheme is like the rectangle color scheme, but the four colors are evenly spaced on the color wheel.



61.7599, 4.2500, 13.9385



61.7599, -15.1038, 9.9733



61.7599, -10.5013, -9.4962



61.7599, 9.4657, -4.0726

Rectangle

The Rectangle color scheme consists of four colors that form a rectangle on the color wheel.



61.7585, 4.2521, 13.9376



61.7599, -7.8955, 14.9059



61.7599, -10.5013, -9.4962



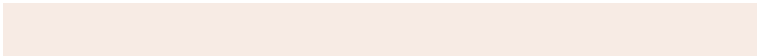
61.7599, 1.4367, -10.9570

Sweetspot

The Sweet Spot groups the original color and five complimentary colors.



61.7599, 4.2500, 13.9385



92.1299, -2.0511, 9.7034



57.5594, 18.7324, -4.7545



42.7860, -0.6766, 4.9259



98.8636, -5.2751, 5.3714



45.2661, -2.4153, 2.4594

Same Dimension

The Same Dimension uses a secret algorithm to generate beautiful new colors.



61.7599, 4.2500, 13.9385



79.9929, 8.2078, 20.9998



68.8617, -7.7399, 20.5997



31.8037, -0.5446, 3.5988



32.4352, 29.8644, 20.5093



7.3431, 3.6829, 4.5892

Inverse Universe

The Inverse Universe completely reimagines the original color for something new.



62.3925, -8.6523, -8.5449



80.9987, -12.4090, -14.9254



55.2270, 3.3112, -18.8280



31.9118, -2.7313, -0.2121



33.4802, -2.3495, -36.7754



7.4937, -1.8127, -5.4534

Previews

White Background



This preview shows how the HunterLab color 61.7585, 4.2521, 13.9376 looks on a white background.

Color Contrast Check

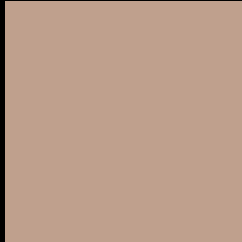
Large Text (above 18pt) WCAG AA × Fail

Any Text WCAG AA × Fail

Large Text (above 18pt) WCAG AAA × Fail

Any Text WCAG AAA × Fail

Black Background



This preview shows how the HunterLab color 61.7585, 4.2521, 13.9376 looks on a black background.

Color Contrast Check

Large Text (above 18pt) WCAG AA ✓ Pass

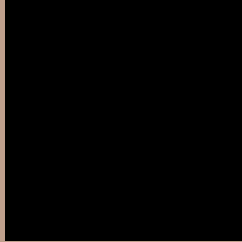
Any Text WCAG AA ✓ Pass

Large Text (above 18pt) WCAG AAA ✓ Pass

Any Text WCAG AAA ✓ Pass

If you want to check with other color combinations, try the [Color Contrast Checker](#).

HunterLab 61.7585, 4.2521, 13.9376 Background



This preview shows how black text looks on a background with the HunterLab color 61.7585, 4.2521, 13.9376.



This preview shows how white text looks on a background with the HunterLab color 61.7585, 4.2521,

13.9376.

Color Blindness Simulation

Color vision deficiency is a very complex topic, and I could not describe the different causes any better than Wikipedia does, so if you want to learn more, you should check out their [article about color blindness](#).

Dichromacy



Original Color

61.7585, 4.2521, 13.9376

Protanopia

61.8747, -4.0625, 12.7724

Deuteranopia

61.7585, 4.2521, 13.9376



Tritanopia

61.7037, 11.2174, 2.6212

Trichromacy



Original Color

61.7585, 4.2521, 13.9376

Protanomaly

61.8364, -1.2466, 13.1650

Deuteranomaly

61.7585, 4.2521, 13.9376

Tritanomaly

61.5792, 8.8247, 6.9541

Monochromacy



Original Color

61.7585, 4.2521, 13.9376

Achromatopsia

62.1634, -3.3169, 3.3775

Achromatomaly

61.8463, -0.4276, 7.0912

CSS Examples

Text

The CSS property to change the color of the text to HunterLab 61.7585, 4.2521, 13.9376 is called "color". The color property can be set on classes, ids or directly on the HTML element.

This example shows how text in the color `rgb(191, 160, 141)` looks like.

```
.text, #text, p{  
    color:rgb(191, 160, 141)  
}
```

If you want to add a text shadow in that color use the text-shadow property, you can generate a text shadow directly with our [CSS Text Shadow Generator](#).

Here you see how black text with a 4 pixel rgb(191, 160, 141) colored shadow looks like.

```
.shadow{ text-shadow: 4px 4px 2px rgb(191, 160, 141) }
```

Border

The CSS property to change the border of an element to HunterLab 61.7585, 4.2521, 13.9376 is called "border". The border property can be set on classes, ids or directly on the HTML element.

This example shows the color as border, it can be applied via the CSS property "border" or "border-color".

```
.border, #border, table{ border:4px solid rgb(191, 160, 141) }
```


If only the border color should be changed use the property `border-color`.

```
.border{ border-color:rgb(191, 160, 141) }
```

If you want to add a box shadow in that color use:

Here you see how a box with a 4 pixel `rgb(191, 160, 141)` colored shadow looks like.

```
.boxshadow{ -moz-box-shadow:4px 4px 4px 4px rgb(191, 160, 141); -webkit-box-shadow:4px 4px 4px 4px rgb(191, 160, 141); box-shadow:4px 4px 4px 4px rgb(191, 160, 141) }
```

Background

The CSS property to change the background color of an element to HunterLab 61.7585, 4.2521, 13.9376 is called "background". The background property can be set on classes, ids or directly on the HTML element.

```
.background, #background, body{  
background: rgb(191, 160, 141) }
```

If only the background color should be changed can be used:

```
.background{ background-color: rgb(191,  
160, 141) }
```

This example shows the color as background, it is applied via the CSS property "background".

To optimize and compress your CSS code, you can use our [online CSS compressor and optimizer](#) based on csstidy. If you want to create a linear or radial gradient as background or border, check our [CSS Gradient Generator](#).

Hey! You found this booklet interesting? Support Converting Colors with the new Membership Option!

The pro membership hides all ads, plus gives you double the colors in the color bucket, and more awesome pro features!

[Learn more, Memberships starting at \\$2.50/m!](#)

**Follow me
on Twitter!**

@ConvertingColor