

Converting Colors

HunterLab(61.7655, 11.3491,
10.3737)

Have a look what the booklet for
HunterLab(61.7655, 11.3491,
10.3737) contains.

HunterLab(61.6946, 11.5670, 10.4889)	3
<i>Conversions</i>	4
<i>Details</i>	6
<i>Harmonies</i>	12
<i>Previews</i>	24
<i>Color Blindness Simulation</i>	28
<i>CSS Examples</i>	31

Color

**HunterLab(61.6946, 11.5670,
10.4889)**

Conversions

Conversions Part 1

Format	Color
Hex	C99B96
RGB	201, 155, 150
RGB Percent	79%, 61%, 59%
CMY	0.2118, 0.3921, 0.4118
CMYK	0.00, 0.23, 0.25, 0.21
HSL	6°, 32%, 69%
HSV	6°, 25%, 79%
XYZ	41.3138, 38.0622, 34.0234
YIQ	168.1840, 29.0210, 8.1970

Conversions

Conversions Part 2

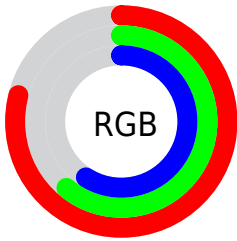
Format	Color
R _Y B	201, 156, 150
Decimal	13212566
CIE Lab	68.07, 16.39, 9.23
CIE LCh	68, 18.812, 29.368
Yxy	38.0640, 0.3643, 0.3357
Android (android.graphics.Color)	4291402646 (0xFFC99B96)
YUV	168.1840, -8.9647, 28.7796
Hunter-Lab	61.6946, 11.5670, 10.4889

Details

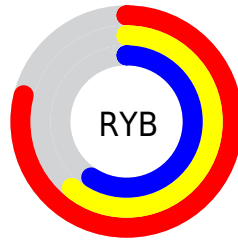
The HunterLab color **61.6946, 11.5670, 10.4889** is a light color, and the websafe version is hex **CC9999**. A complement of this color would be **70.8375, -15.9655, -2.8805**, and the grayscale version is **62.6802, -3.3445, 3.4055**.

A 20% lighter version of the original color is **84.6834, 10.2842, 12.3650**, and **41.1248, 10.7454, 8.5105** is the 20% darker color. If you saturate the color by 10%, you get **56.4651, 18.2735, 12.9743**, and if you desaturate by 10%, it is **67.2769, 5.1672, 7.9866**.

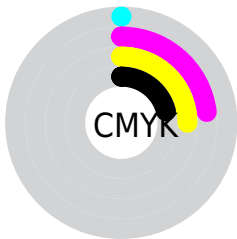
Distribution



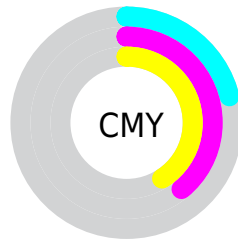
- Red (79%)
- Green (61%)
- Blue (59%)



- Red (79%)
- Yellow (61%)
- Blue (59%)



- Cyan (0%)
- Magenta (23%)
- Yellow (25%)
- Black (21%)



- Cyan (21%)
- Magenta (39%)
- Yellow (41%)

Brightness & Saturation Gradients

These gradients show how the HunterLab color 61.6946, 11.5670, 10.4889 changes by changing the brightness by 10 percent. The first figure shows a shift by +10% for each color and the second figure -10%.

Similar to the brightness gradients but the following saturation gradients show a change of the HunterLab color 61.6946, 11.5670, 10.4889 by changing the saturation by 10% instead.

61.6946, 11.5670,
10.4889

61.6946, 11.5670,
10.4889

183.8190, 11.0758,
20.6166

51.0219, 11.3071,
9.4127

84.9742, 11.8536,
12.6596

41.0461, 10.9614,
8.3346

97.5118, 11.8992,
13.7579

31.8215, 10.5146,
7.2477

110.6118, 11.8863,
14.8675

23.4150, 9.9491,
6.1394

124.2509, 11.8192,
15.9895

15.9158, 9.2415,
4.9872

138.4086, 11.7016,
17.1249

9.4508, 8.3617,
4.5611

153.0667, 11.5367,

0.0000, INF, NaN

18.2743

0.0000, NaN, NaN

168.2085, 11.3273,
19.4381

0.0000, NaN, NaN

■ 61.6946, 11.5670,
10.4889

■ 61.6946, 11.5670,
10.4889

■ 56.4651, 18.2735,
12.9743

■ 67.2769, 5.1672,
7.9866

■ 51.6460, 25.2584,
15.3961

■ 73.1571, -0.9238,
5.4882

■ 47.3125, 32.4139,
17.6830

■ 79.2954, -6.7326,
3.0064

■ 43.5477, 39.5258,
19.7265

■ 85.6589, -12.2912,
0.5453

■ 40.4373, 46.2413,
21.3847

■ 92.2207, -17.6326,
-1.8948

■ 38.0538, 52.0841,
22.5085

■ 95.4765, -21.4489,
-0.2939

■ 36.4331, 56.5533,
23.0053

■ 35.9279, 58.0185,
23.1543

Harmonies

Analogous

The Analogous color harmony consists of three colors that are next to each other on the color wheel.



61.6960, 13.8672, 3.1870



61.6946, 11.5670, 10.4889



61.6960, 5.2329, 15.2676

Triad

The Triadic color harmony groups three colors that are evenly spaced from another and form a triangle on the color wheel.



61.6960, 11.5647, 10.4899



61.6960, -16.7056, 10.7490



61.6960, -3.4750, -14.2485

Complementary

The Complementary color scheme is a pair of colors which are on the opposite of each other on the color wheel.



61.6946, 11.5670, 10.4889



70.8375, -15.9655, -2.8805

Split Complementary

Split-complementary colors differ from the complementary color scheme. The scheme consists of three colors, the original color and two neighbors of the complement color.



61.6960, -11.3840, -11.5315



61.6946, 11.5670, 10.4889



61.6960, -18.7652, 3.5291

Square

The Square scheme is like the rectangle color scheme, but the four colors are evenly spaced on the color wheel.



61.6960, 11.5647, 10.4899



61.6960, -11.0884, 15.4024



61.6960, -16.8696, -4.7415



61.6960, 4.9051, -11.7432

Rectangle

The Rectangle color scheme consists of four colors that form a rectangle on the color wheel.



61.6946, 11.5670, 10.4889



61.6960, -0.2585, 16.7386



61.6960, -16.8696, -4.7415



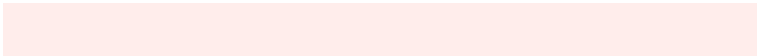
61.6960, -6.2744, -13.9106

Sweetspot

The Sweet Spot groups the original color and five complimentary colors.



61.6960, 11.5647, 10.4899



93.5804, 0.9361, 8.0749



61.8469, 21.7706, -12.0050



42.7476, 0.9914, 3.9664

0.0000, NaN, NaN



46.2646, -2.4686, 2.5136

Same Dimension

The Same Dimension uses a secret algorithm to generate beautiful new colors.



61.6960, 11.5647, 10.4899



77.2106, 19.5131, 15.3724



68.6743, -0.9701, 17.3881



32.8657, 0.6868, 3.0124



28.5983, 45.6417, 18.4212



6.6763, 8.5063, 4.2628

Inverse Universe

The Inverse Universe completely reimagines the original color for something new.



70.8375, -15.9655, -2.8805



91.4157, -23.4170, -5.4403



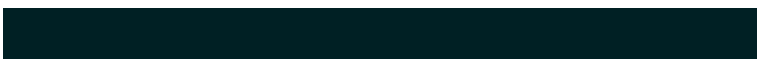
63.1838, -3.9783, -12.9894



34.4714, -4.1189, 0.6712



48.5564, -22.1424, -12.8922



10.8131, -5.1271, -2.4474

Previews

White Background



This preview shows how the HunterLab color 61.6946, 11.5670, 10.4889 looks on a white background.

Color Contrast Check

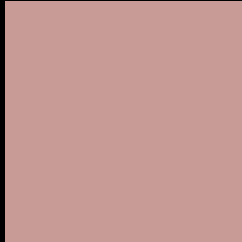
Large Text (above 18pt) WCAG AA × Fail

Any Text WCAG AA × Fail

Large Text (above 18pt) WCAG AAA × Fail

Any Text WCAG AAA × Fail

Black Background



This preview shows how the HunterLab color 61.6946, 11.5670, 10.4889 looks on a black background.

Color Contrast Check

Large Text (above 18pt) WCAG AA ✓ Pass

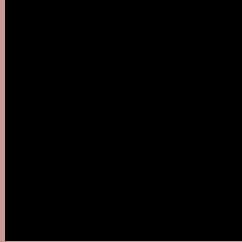
Any Text WCAG AA ✓ Pass

Large Text (above 18pt) WCAG AAA ✓ Pass

Any Text WCAG AAA ✓ Pass

If you want to check with other color combinations, try the [Color Contrast Checker](#).

HunterLab 61.6946, 11.5670, 10.4889 Background



This preview shows how black text looks on a background with the HunterLab color 61.6946, 11.5670, 10.4889.



This preview shows how white text looks on a background with the HunterLab color 61.6946, 11.5670,

Color Blindness Simulation

Color vision deficiency is a very complex topic, and I could not describe the different causes any better than Wikipedia does, so if you want to learn more, you should check out their [article about color blindness](#).

Dichromacy



Original Color

61.6946, 11.5670, 10.4889

Protanopia

62.0027, -2.9923, 8.0770

Deuteranopia

61.6465, 4.2765, 10.7143



Tritanopia

61.8026, 15.4945, 4.2036

Trichromacy



Original Color

61.6946, 11.5670, 10.4889

Protanomaly

61.8393, 2.2812, 8.8335

Deuteranomaly

61.6126, 7.0320, 10.7266

Tritanomaly

61.8109, 13.8651, 6.4290

Monochromacy



Original Color

61.6946, 11.5670, 10.4889

Achromatopsia

62.5758, -3.3389, 3.3999

Achromatomaly

62.0249, 1.8305, 6.0201

CSS Examples

Text

The CSS property to change the color of the text to HunterLab 61.6946, 11.5670, 10.4889 is called "color". The color property can be set on classes, ids or directly on the HTML element.

This example shows how text in the color `rgb(201, 155, 150)` looks like.

```
.text, #text, p{  
    color:rgb(201, 155, 150)  
}
```

If you want to add a text shadow in that color use the text-shadow property, you can generate a text shadow directly with our [CSS Text Shadow Generator](#).

Here you see how black text with a 4 pixel rgb(201, 155, 150) colored shadow looks like.

```
.shadow{ text-shadow: 4px 4px 2px rgb(201, 155, 150) }
```

Border

The CSS property to change the border of an element to HunterLab 61.6946, 11.5670, 10.4889 is called "border". The border property can be set on classes, ids or directly on the HTML element.

This example shows the color as border, it can be applied via the CSS property "border" or "border-color".

```
.border, #border, table{ border:4px solid rgb(201, 155, 150) }
```


If only the border color should be changed use the property `border-color`.

```
.border{ border-color:rgb(201, 155, 150) }
```

If you want to add a box shadow in that color use:

Here you see how a box with a 4 pixel `rgb(201, 155, 150)` colored shadow looks like.

```
.boxshadow{ -moz-box-shadow:4px 4px 4px  
4px rgb(201, 155, 150); -webkit-box-  
shadow:4px 4px 4px 4px rgb(201, 155, 150);  
box-shadow:4px 4px 4px 4px rgb(201, 155,  
150) }
```

Background

The CSS property to change the background color of an element to HunterLab 61.6946, 11.5670, 10.4889 is called "background". The background property can be set on classes, ids or directly on the HTML element.

```
.background, #background, body{  
background: rgb(201, 155, 150) }
```

If only the background color should be changed can be used:

```
.background{ background-color: rgb(201,  
155, 150) }
```

This example shows the color as background, it is applied via the CSS property "background".

To optimize and compress your CSS code, you can use our [online CSS compressor and optimizer](#) based on csstidy. If you want to create a linear or radial gradient as background or border, check our [CSS Gradient Generator](#).

Hey! You found this booklet interesting? Support Converting Colors with the new Membership Option!

The pro membership hides all ads, plus gives you double the colors in the color bucket, and more awesome pro features!

[Learn more, Memberships starting at \\$2.50/m!](#)

**Follow me
on Twitter!**

@ConvertingColor