

Converting Colors

HunterLab(61.7692, 6.5601,
18.5743)

Have a look what the booklet for
HunterLab(61.7692, 6.5601,
18.5743) contains.

HunterLab(61.7692, 6.5601, 18.5743)	3
<i>Conversions</i>	4
<i>Details</i>	6
<i>Harmonies</i>	12
<i>Previews</i>	24
<i>Color Blindness Simulation</i>	28
<i>CSS Examples</i>	31

Color

**HunterLab(61.7692, 6.5601,
18.5743)**

Conversions

Conversions Part 1

Format	Color
Hex	C79E80
RGB	199, 158, 128
RGB Percent	78%, 62%, 50%
CMY	0.2196, 0.3804, 0.4980
CMYK	0.00, 0.21, 0.36, 0.22
HSL	25°, 39%, 64%
HSV	25°, 36%, 78%
XYZ	39.6763, 38.1543, 25.6955
YIQ	166.8390, 34.0660, -0.6380

Conversions

Conversions Part 2

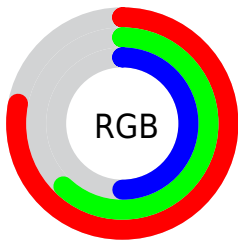
Format	Color
R_{YB}	199, 180, 128
Decimal	13082240
CIE _{Lab}	68.14, 11.03, 21.47
CIE _{LCh}	68, 24.135, 62.803
Yxy	38.1561, 0.3832, 0.3686
Android (android.graphics.Color)	4291272320 (0xFFC79E80)
YUV	166.8390, -19.1476, 28.2052
Hunter-Lab	61.7692, 6.5601, 18.5743

Details

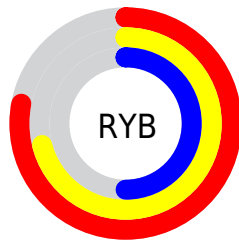
The HunterLab color **61.7692, 6.5601, 18.5743** is a light color, and the websafe version is hex **CC9966**. A complement of this color would be **60.8994, -8.6812, -15.2309**, and the grayscale version is **62.1648, -3.3170, 3.3775**.

A 20% lighter version of the original color is **84.9616, 5.4739, 21.9417**, and **41.2422, 6.4700, 14.8924** is the 20% darker color. If you saturate the color by 10%, you get **58.2613, 10.2499, 21.6131**, and if you desaturate by 10%, it is **65.4506, 3.1996, 15.0435**.

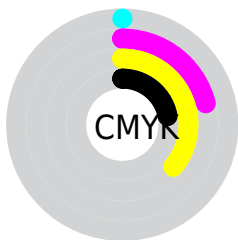
Distribution



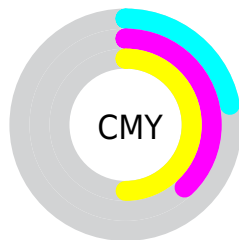
- Red (78%)
- Green (62%)
- Blue (50%)



- Red (78%)
- Yellow (71%)
- Blue (50%)



- Cyan (0%)
- Magenta (21%)
- Yellow (36%)
- Black (22%)



- Cyan (22%)
- Magenta (38%)
- Yellow (50%)

Brightness & Saturation Gradients

These gradients show how the HunterLab color 61.7692, 6.5601, 18.5743 changes by changing the brightness by 10 percent. The first figure shows a shift by +10% for each color and the second figure -10%.

Similar to the brightness gradients but the following saturation gradients show a change of the HunterLab color 61.7692, 6.5601, 18.5743 by changing the saturation by 10% instead.

■ 61.7692, 6.5601,
18.5743

■ 61.7692, 6.5601,
18.5743

183.9264, 4.1374,
33.7029

■ 51.0920, 6.5614,
16.7644

■ 85.0573, 6.3598,
22.0644

■ 41.1113, 6.4913,
14.8880

■ 97.5988, 6.1771,
23.7645

■ 31.8813, 6.3365,
12.9204

■ 110.7024, 5.9444,
25.4449

■ 23.4691, 6.0822,
10.8226

124.3451, 5.6653,
27.1109

■ 15.9633, 5.7068,
8.6292

138.5063, 5.3426,
28.7667

■ 9.4907, 5.1774,
6.6435

153.1677, 4.9790,

0.0000, INF, NaN

30.4156

0.0000, NaN, NaN

168.3127, 4.5766,
32.0603

0.0000, NaN, NaN

■ 61.7692, 6.5601,
18.5743

■ 61.7692, 6.5601,
18.5743

■ 58.2613, 10.2499,
21.6131

■ 65.4506, 3.1996,
15.0435

■ 54.9407, 14.2871,
24.0936

■ 69.2848, 0.1571,
11.0770

■ 51.8285, 18.6665,
25.9518

■ 73.2590, -2.5925,
6.7279

■ 48.9457, 23.3653,
27.1290

■ 77.3604, -5.0732,
2.0418

■ 46.3133, 28.3305,
27.5870

■ 81.5780, -7.3089,
-2.9420

■ 43.9502, 33.4679,
27.3346

■ 85.9020, -9.3224,
-8.1902

■ 43.0090, 35.6757,
27.1265

■ 89.8700, -13.6598,
-7.2772

■ 93.6421, -19.4484,
-2.5400

■ 95.3321, -21.9763,
-0.4810

Harmonies

Analogous

The Analogous color harmony consists of three colors that are next to each other on the color wheel.



61.7706, 15.2899, 13.2026



61.7692, 6.5601, 18.5743



61.7706, -4.3191, 20.1218

Triad

The Triadic color harmony groups three colors that are evenly spaced from another and form a triangle on the color wheel.



61.7706, 6.5577, 18.5752



61.7706, -22.8393, 2.3810



61.7706, 8.4497, -15.8164

Complementary

The Complementary color scheme is a pair of colors which are on the opposite of each other on the color wheel.



61.7692, 6.5601, 18.5743



60.8994, -8.6812, -15.2309

Split Complementary

Split-complementary colors differ from the complementary color scheme. The scheme consists of three colors, the original color and two neighbors of the complement color.



61.7706, -2.2727, -20.0044



61.7692, 6.5601, 18.5743



61.7706, -19.9208, -8.4218

Square

The Square scheme is like the rectangle color scheme, but the four colors are evenly spaced on the color wheel.



61.7706, 6.5577, 18.5752



61.7706, -20.8296, 11.7852



61.7706, -12.5744, -17.0901



61.7706, 16.4343, -6.4441

Rectangle

The Rectangle color scheme consists of four colors that form a rectangle on the color wheel.



61.7692, 6.5601, 18.5743



61.7706, -11.2011, 19.0404



61.7706, -12.5744, -17.0901



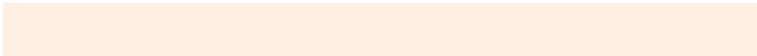
61.7706, 5.0209, -17.9440

Sweetspot

The Sweet Spot groups the original color and five complimentary colors.



61.7706, 6.5577, 18.5752



94.0327, -1.4814, 12.1172



55.1916, 27.8444, -6.0482



43.1704, -0.4511, 5.9688

0.0000, NaN, NaN



46.2646, -2.4686, 2.5136

Same Dimension

The Same Dimension uses a secret algorithm to generate beautiful new colors.



61.7706, 6.5577, 18.5752



78.0240, 12.5261, 27.8335



72.0260, -10.7119, 27.3832



33.7066, -0.7546, 3.9358



34.7274, 28.0025, 21.8891



8.4486, 4.0012, 5.2761

Inverse Universe

The Inverse Universe completely reimagines the original color for something new.



60.8994, -8.6812, -15.2309



76.6205, -11.7633, -26.2015



50.7350, 8.7578, -31.7279



33.5968, -2.7066, -0.3766



32.7083, 0.8931, -42.8105



8.0485, -1.3327, -7.1830

Previews

White Background



This preview shows how the HunterLab color 61.7692, 6.5601, 18.5743 looks on a white background.

Color Contrast Check

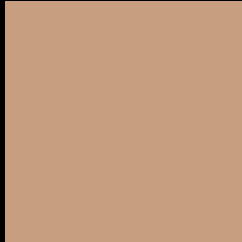
Large Text (above 18pt) WCAG AA × Fail

Any Text WCAG AA × Fail

Large Text (above 18pt) WCAG AAA × Fail

Any Text WCAG AAA × Fail

Black Background



This preview shows how the HunterLab color 61.7692, 6.5601, 18.5743 looks on a black background.

Color Contrast Check

Large Text (above 18pt) WCAG AA ✓ Pass

Any Text WCAG AA ✓ Pass

Large Text (above 18pt) WCAG AAA ✓ Pass

Any Text WCAG AAA ✓ Pass

If you want to check with other color combinations, try the [Color Contrast Checker](#).

HunterLab 61.7692, 6.5601, 18.5743 Background



This preview shows how black text looks on a background with the HunterLab color 61.7692, 6.5601, 18.5743.



This preview shows how white text looks on a background with the HunterLab color 61.7692, 6.5601,

Color Blindness Simulation

Color vision deficiency is a very complex topic, and I could not describe the different causes any better than Wikipedia does, so if you want to learn more, you should check out their [article about color blindness](#).

Dichromacy



Original Color

61.7692, 6.5601, 18.5743

Protanopia

61.8753, -4.6222, 17.1286

Deuteranopia

61.8888, 4.1001, 18.6428



Tritanopia

61.8026, 15.4945, 4.2036

Trichromacy



Original Color

61.7692, 6.5601, 18.5743

Protanomaly

61.7636, -0.5719, 17.4356

Deuteranomaly

61.7175, 4.9621, 18.4981

Tritanomaly

61.8597, 12.2060, 9.8596

Monochromacy



Original Color

61.7692, 6.5601, 18.5743

Achromatopsia

62.1634, -3.3169, 3.3775

Achromatomaly

61.9956, -0.1880, 9.3763

CSS Examples

Text

The CSS property to change the color of the text to HunterLab 61.7692, 6.5601, 18.5743 is called "color". The color property can be set on classes, ids or directly on the HTML element.

This example shows how text in the color `rgb(199, 158, 128)` looks like.

```
.text, #text, p{  
    color:rgb(199, 158, 128)  
}
```

If you want to add a text shadow in that color use the text-shadow property, you can generate a text shadow directly with our [CSS Text Shadow Generator](#).

Here you see how black text with a 4 pixel rgb(199, 158, 128) colored shadow looks like.

```
.shadow{ text-shadow: 4px 4px 2px rgb(199, 158, 128) }
```

Border

The CSS property to change the border of an element to HunterLab 61.7692, 6.5601, 18.5743 is called "border". The border property can be set on classes, ids or directly on the HTML element.

This example shows the color as border, it can be applied via the CSS property "border" or "border-color".

```
.border, #border, table{ border:4px solid rgb(199, 158, 128) }
```


If only the border color should be changed use the property `border-color`.

```
.border{ border-color:rgb(199, 158, 128) }
```

If you want to add a box shadow in that color use:

Here you see how a box with a 4 pixel `rgb(199, 158, 128)` colored shadow looks like.

```
.boxshadow{ -moz-box-shadow:4px 4px 4px  
4px rgb(199, 158, 128); -webkit-box-  
shadow:4px 4px 4px 4px rgb(199, 158, 128);  
box-shadow:4px 4px 4px 4px rgb(199, 158,  
128) }
```

Background

The CSS property to change the background color of an element to HunterLab 61.7692, 6.5601, 18.5743 is called "background". The background property can be set on classes, ids or directly on the HTML element.

```
.background, #background, body{  
background: rgb(199, 158, 128) }
```

If only the background color should be changed can be used:

```
.background{ background-color: rgb(199,  
158, 128) }
```

This example shows the color as background, it is applied via the CSS property "background".

To optimize and compress your CSS code, you can use our [online CSS compressor and optimizer](#) based on csstidy. If you want to create a linear or radial gradient as background or border, check our [CSS Gradient Generator](#).

Hey! You found this booklet interesting? Support Converting Colors with the new Membership Option!

The pro membership hides all ads, plus gives you double the colors in the color bucket, and more awesome pro features!

[Learn more, Memberships starting at \\$2.50/m!](#)

**Follow me
on Twitter!**

@ConvertingColor