

Converting Colors

HunterLab(61.7922, 55.6211,
11.9993)

Have a look what the booklet for
HunterLab(61.7922, 55.6211,
11.9993) contains.

HunterLab(60.2951, 51.5756, 10.5065)	3
<i>Conversions</i>	4
<i>Details</i>	6
<i>Harmonies</i>	12
<i>Previews</i>	24
<i>Color Blindness Simulation</i>	28
<i>CSS Examples</i>	31

Color

**HunterLab(60.2951, 51.5756,
10.5065)**

Conversions

Conversions Part 1

Format	Color
Hex	FF7694
RGB	255, 118, 148
RGB Percent	100%, 46%, 58%
CMY	0.0000, 0.5372, 0.4196
CMYK	0.00, 0.54, 0.42, 0.00
HSL	347°, 100%, 73%
HSV	347°, 54%, 100%
XYZ	53.0637, 36.3550, 32.2375
YIQ	162.3830, 72.0220, 38.3740

Conversions

Conversions Part 2

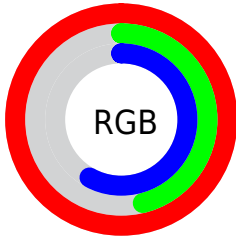
Format	Color
RYB	255, 118, 148
Decimal	16742036
CIELab	66.79, 54.85, 9.44
CIElCh	67, 55.657, 9.769
Yxy	36.3569, 0.4362, 0.2988
Android (android.graphics.Color)	4294932116 (0xFFFF7694)
YUV	162.3830, -7.0908, 81.2251
Hunter-Lab	60.2951, 51.5756, 10.5065

Details

The HunterLab color **60.2951, 51.5756, 10.5065** is a light color, and the websafe version is hex **FF6699**. A complement of this color would be **89.8936, -44.4799, 7.6270**, and the grayscale version is **60.2747, -3.2161, 3.2748**.

A 20% lighter version of the original color is **74.6970, 29.4750, 2.1920**, and **39.7447, 48.0046, 8.0931** is the 20% darker color. If you saturate the color by 10%, you get **55.2841, 61.5051, 13.2096**, and if you desaturate by 10%, it is **66.2434, 40.8978, 8.4135**.

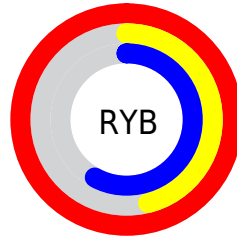
Distribution



Red (100%)

Green (46%)

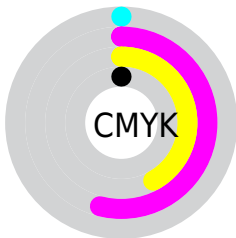
Blue (58%)



Red (100%)

Yellow (46%)

Blue (58%)

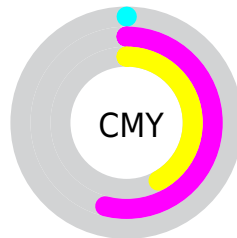


Cyan (0%)

Magenta (54%)

Yellow (42%)

Black (0%)



Cyan (0%)

Magenta (54%)

Yellow (42%)

Brightness & Saturation Gradients

These gradients show how the HunterLab color 60.2951, 51.5756, 10.5065 changes by changing the brightness by 10 percent. The first figure shows a shift by +10% for each color and the second figure -10%.

Similar to the brightness gradients but the following saturation gradients show a change of the HunterLab color 60.2951, 51.5756, 10.5065 by changing the saturation by 10% instead.

60.2951, 51.5756,
10.5065

60.2951, 51.5756,
10.5065

181.8015, 63.5772,
20.7067

49.7091, 49.7578,
9.4183

83.4162, 54.8799,
12.6982

39.8260, 47.8401,
8.3260

95.8802, 56.3815,
13.8054

30.7017, 45.8360,
7.2223

108.9097, 57.7881,
14.9233

22.4054, 43.7999,
6.0931

122.4812, 59.1053,
16.0530

15.0300, 41.8941,
4.9132

136.5738, 60.3382,
17.1956

8.6711, 40.9864,
4.9863

151.1690, 61.4916,

0.0000, INF, NaN

18.3518

0.0000, NaN, NaN

166.2499, 62.5699,
19.5220

0.0000, NaN, NaN

■ 60.2951, 51.5756,
10.5065

■ 60.2951, 51.5756,
10.5065

■ 55.2841, 61.5051,
13.2096

■ 66.2434, 40.8978,
8.4135

■ 51.3435, 69.9442,
16.4251

■ 72.9813, 30.0115,
6.9203

■ 48.5695, 76.0571,
19.9231

■ 80.3816, 19.2190,
5.9687

■ 46.9598, 79.2880,
23.3523

■ 88.3367, 8.6674,
5.4819

■ 46.4153, 80.0992,
25.2519

■ 96.7596, -1.5922,
5.3841

100.0000, -5.3358,
5.4332

Harmonies

Analogous

The Analogous color harmony consists of three colors that are next to each other on the color wheel.



60.2967, 48.5839, -14.6818



60.2951, 51.5756, 10.5065



60.2967, 38.1563, 25.7478

Triad

The Triadic color harmony groups three colors that are evenly spaced from another and form a triangle on the color wheel.



60.2967, 51.5716, 10.5078



60.2967, -30.8858, 28.8388



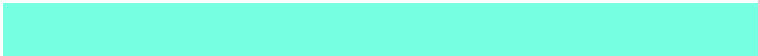
60.2967, -18.8959, -56.9773

Complementary

The Complementary color scheme is a pair of colors which are on the opposite of each other on the color wheel.



60.2951, 51.5756, 10.5065



89.8936, -44.4799, 7.6270

Split Complementary

Split-complementary colors differ from the complementary color scheme. The scheme consists of three colors, the original color and two neighbors of the complement color.



60.2967, -35.7766, -33.7130



60.2951, 51.5756, 10.5065



60.2967, -41.8802, 17.0000

Square

The Square scheme is like the rectangle color scheme, but the four colors are evenly spaced on the color wheel.



60.2967, 51.5716, 10.5078



60.2967, -11.1287, 33.1203



60.2967, -43.5122, -4.9657



60.2967, 5.1175, -61.0405

Rectangle

The Rectangle color scheme consists of four colors that form a rectangle on the color wheel.



60.2951, 51.5756, 10.5065



60.2967, 22.8208, 30.8573



60.2967, -43.5122, -4.9657



60.2967, -25.4770, -50.7986

Sweetspot

The Sweet Spot groups the original color and five complimentary colors.



60.2967, 51.5716, 10.5078



86.4808, 11.0458, 5.5560



59.8935, 59.0177, -55.7151



39.2440, 6.1108, 2.6098

0.0000, NaN, NaN



46.2646, -2.4686, 2.5136

Same Dimension

The Same Dimension uses a secret algorithm to generate beautiful new colors.



60.2967, 51.5716, 10.5078



55.1597, 61.7635, 13.2927



67.7184, 29.5134, 27.2359



42.4878, 1.9911, 2.4970



33.5784, 57.9991, 17.8596



10.5509, 18.3682, 4.4968

Inverse Universe

The Inverse Universe completely reimagines the original color for something new.



60.2967, 51.5716, 10.5078



55.1597, 61.7635, 13.2927



78.3954, -21.7170, -23.6246



42.4878, 1.9911, 2.4970



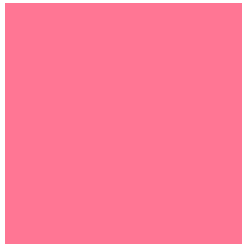
33.5784, 57.9991, 17.8596



10.5509, 18.3682, 4.4968

Previews

White Background



This preview shows how the HunterLab color 60.2951, 51.5756, 10.5065 looks on a white background.

Color Contrast Check

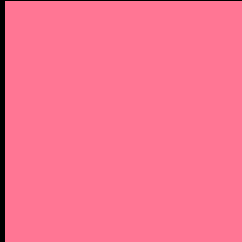
Large Text (above 18pt) WCAG AA × Fail

Any Text WCAG AA × Fail

Large Text (above 18pt) WCAG AAA × Fail

Any Text WCAG AAA × Fail

Black Background



This preview shows how the HunterLab color 60.2951, 51.5756, 10.5065 looks on a black background.

Color Contrast Check

Large Text (above 18pt) WCAG AA ✓ Pass

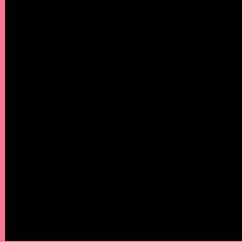
Any Text WCAG AA ✓ Pass

Large Text (above 18pt) WCAG AAA ✓ Pass

Any Text WCAG AAA ✓ Pass

If you want to check with other color combinations, try the [Color Contrast Checker](#).

HunterLab 60.2951, 51.5756, 10.5065 Background



This preview shows how black text looks on a background with the HunterLab color 60.2951, 51.5756, 10.5065.



This preview shows how white text looks on a background with the HunterLab color 60.2951, 51.5756,

Color Blindness Simulation

Color vision deficiency is a very complex topic, and I could not describe the different causes any better than Wikipedia does, so if you want to learn more, you should check out their [article about color blindness](#).

Dichromacy



Original Color

60.2951, 51.5756, 10.5065

Protanopia

60.5027, -1.2303, -0.9875

Deuteranopia

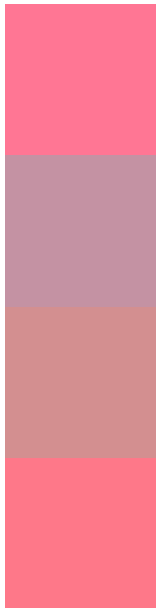
60.4202, 4.1328, 12.1905



Tritanopia

60.2970, 47.6476, 17.2225

Trichromacy



Original Color

60.2951, 51.5756, 10.5065

Protanomaly

59.1083, 16.3130, 1.9510

Deuteranomaly

59.5881, 20.6972, 10.8267

Tritanomaly

60.2577, 48.8981, 14.6997

Monochromacy



Original Color

60.2951, 51.5756, 10.5065

Achromatopsia

60.1088, -3.2073, 3.2658

Achromatomaly

58.9303, 15.3956, 4.4892

CSS Examples

Text

The CSS property to change the color of the text to HunterLab 60.2951, 51.5756, 10.5065 is called "color". The color property can be set on classes, ids or directly on the HTML element.

This example shows how text in the color `rgb(255, 118, 148)` looks like.

```
.text, #text, p{  
    color:rgb(255, 118, 148)  
}
```

If you want to add a text shadow in that color use the text-shadow property, you can generate a text shadow directly with our [CSS Text Shadow Generator](#).

Here you see how black text with a 4 pixel rgb(255, 118, 148) colored shadow looks like.

```
.shadow{ text-shadow: 4px 4px 2px rgb(255, 118, 148) }
```

Border

The CSS property to change the border of an element to HunterLab 60.2951, 51.5756, 10.5065 is called "border". The border property can be set on classes, ids or directly on the HTML element.

This example shows the color as border, it can be applied via the CSS property "border" or "border-color".

```
.border, #border, table{ border:4px solid rgb(255, 118, 148) }
```


If only the border color should be changed use the property `border-color`.

```
.border{ border-color:rgb(255, 118, 148) }
```

If you want to add a box shadow in that color use:

Here you see how a box with a 4 pixel `rgb(255, 118, 148)` colored shadow looks like.

```
.boxshadow{ -moz-box-shadow:4px 4px 4px  
4px rgb(255, 118, 148); -webkit-box-  
shadow:4px 4px 4px 4px rgb(255, 118, 148);  
box-shadow:4px 4px 4px 4px rgb(255, 118,  
148) }
```

Background

The CSS property to change the background color of an element to HunterLab 60.2951, 51.5756, 10.5065 is called "background". The background property can be set on classes, ids or directly on the HTML element.

```
.background, #background, body{  
background: rgb(255, 118, 148) }
```

If only the background color should be changed can be used:

```
.background{ background-color: rgb(255,  
118, 148) }
```

This example shows the color as background, it is applied via the CSS property "background".

To optimize and compress your CSS code, you can use our [online CSS compressor and optimizer](#) based on csstidy. If you want to create a linear or radial gradient as background or border, check our [CSS Gradient Generator](#).

Hey! You found this booklet interesting? Support Converting Colors with the new Membership Option!

The pro membership hides all ads, plus gives you double the colors in the color bucket, and more awesome pro features!

[Learn more, Memberships starting at \\$2.50/m!](#)

**Follow me
on Twitter!**

@ConvertingColor