

Converting Colors

HunterLab(61.8279, 4.8328,
11.3157)

Have a look what the booklet for
HunterLab(61.8279, 4.8328,
11.3157) contains.

HunterLab(61.8279, 4.8328, 11.3157)	3
<i>Conversions</i>	4
<i>Details</i>	6
<i>Harmonies</i>	12
<i>Previews</i>	24
<i>Color Blindness Simulation</i>	28
<i>CSS Examples</i>	31

Color

**HunterLab(61.8279, 4.8328,
11.3157)**

Conversions

Conversions Part 1

Format	Color
Hex	BEA094
RGB	190, 160, 148
RGB Percent	75%, 63%, 58%
CMY	0.2549, 0.3725, 0.4196
CMYK	0.00, 0.16, 0.22, 0.25
HSL	17°, 24%, 66%
HSV	17°, 22%, 75%
XYZ	39.1513, 38.2269, 33.3320
YIQ	167.6020, 21.7320, 2.6280

Conversions

Conversions Part 2

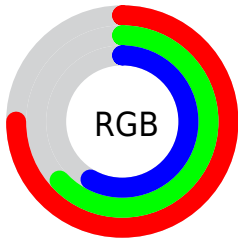
Format	Color
R_{YB}	190, 165, 148
Decimal	12492948
CIE _{Lab}	68.19, 9.15, 10.36
CIE _{LCh}	68, 13.820, 48.562
Yxy	38.2286, 0.3536, 0.3453
Android (android.graphics.Color)	4290683028 (0xFFBEA094)
YUV	167.6020, -9.6638, 19.6430
Hunter-Lab	61.8279, 4.8328, 11.3157

Details

The HunterLab color $61.8279, 4.8328, 11.3157$ is a light color, and the websafe version is hex $CC9999$. A complement of this color would be $64.6941, -9.9483, -4.9560$, and the grayscale version is $62.4450, -3.3319, 3.3928$.

A 20% lighter version of the original color is $85.2287, 4.4063, 13.7233$, and $41.2730, 4.6669, 9.2678$ is the 20% darker color. If you saturate the color by 10%, you get $57.6406, 9.2005, 14.3153$, and if you desaturate by 10%, it is $66.2157, 0.7519, 8.0790$.

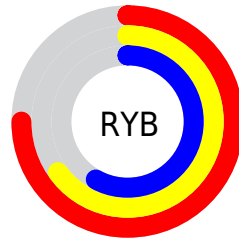
Distribution



Red (75%)

Green (63%)

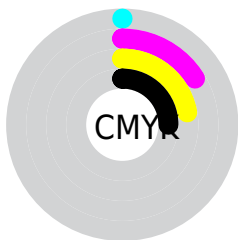
Blue (58%)



Red (75%)

Yellow (65%)

Blue (58%)

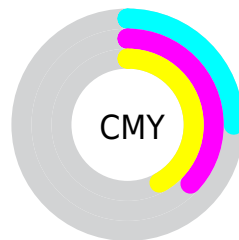


Cyan (0%)

Magenta (16%)

Yellow (22%)

Black (25%)



Cyan (25%)

Magenta (37%)

Yellow (42%)

Brightness & Saturation Gradients

These gradients show how the HunterLab color 61.8279, 4.8328, 11.3157 changes by changing the brightness by 10 percent. The first figure shows a shift by +10% for each color and the second figure -10%.

Similar to the brightness gradients but the following saturation gradients show a change of the HunterLab color 61.8279, 4.8328, 11.3157 by changing the saturation by 10% instead.

■ 61.8279, 4.8328,
11.3157

■ 61.8279, 4.8328,
11.3157

184.0108, 1.7201,
21.8905

■ 51.1470, 4.9287,
10.1748

■ 85.1225, 4.4579,
13.6034

■ 41.1625, 4.9586,
9.0265

■ 97.6671, 4.1934,
14.7552

■ 31.9284, 4.9104,
7.8625

110.7737, 3.8822,
15.9158

■ 23.5115, 4.7708,
6.6679

124.4192, 3.5274,
17.0866

■ 16.0007, 4.5200,
5.4162

138.5831, 3.1316,
18.2687

■ 9.5221, 4.1267,
5.0293

153.2471, 2.6972,

0.0000, INF, NaN

19.4630

0.0000, NaN, NaN

168.3946, 2.2261,
20.6701

0.0000, NaN, NaN

■ 61.8279, 4.8328,
11.3157

■ 61.8279, 4.8328,
11.3157

■ 57.6406, 9.2005,
14.3153

■ 66.2157, 0.7519,
8.0790

■ 53.6761, 13.8762,
17.0227

■ 70.7774, -3.0586,
4.6438

■ 49.9666, 18.8572,
19.3747

■ 75.4951, -6.6265,
1.0432

■ 46.5475, 24.1169,
21.2951

■ 80.3530, -9.9777,
-2.6976

■ 43.4576, 29.5873,
22.7009

■ 85.3373, -13.1366,
-6.5588

■ 40.7371, 35.1439,
23.5146

■ 90.1824, -17.5526,
-6.9367

■ 38.4242, 40.5929,
23.6900

■ 94.7010, -24.2795,
-1.3024

■ 36.8969, 44.6130,
23.5167

■ 94.7033, -24.2829,
-1.2995

Harmonies

Analogous

The Analogous color harmony consists of three colors that are next to each other on the color wheel.



61.8293, 8.4738, 6.8857



61.8279, 4.8328, 11.3157



61.8293, -0.9077, 13.5293

Triad

The Triadic color harmony groups three colors that are evenly spaced from another and form a triangle on the color wheel.



61.8293, 4.8307, 11.3166



61.8293, -14.6158, 5.5840



61.8293, 0.5590, -8.4467

Complementary

The Complementary color scheme is a pair of colors which are on the opposite of each other on the color wheel.



61.8279, 4.8328, 11.3157



64.6941, -9.9483, -4.9560

Split Complementary

Split-complementary colors differ from the complementary color scheme. The scheme consists of three colors, the original color and two neighbors of the complement color.



61.8293, -5.6612, -8.8837



61.8279, 4.8328, 11.3157



61.8293, -14.2582, -0.3746

Square

The Square scheme is like the rectangle color scheme, but the four colors are evenly spaced on the color wheel.



61.8293, 4.8307, 11.3166



61.8293, -12.0327, 10.4452



61.8293, -11.0357, -5.8056



61.8293, 5.9410, -4.6649

Rectangle

The Rectangle color scheme consists of four colors that form a rectangle on the color wheel.



61.8279, 4.8328, 11.3157



61.8293, -5.0764, 13.6110



61.8293, -11.0357, -5.8056



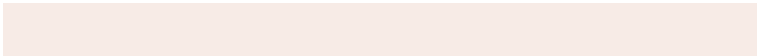
61.8293, -1.5081, -9.0026

Sweetspot

The Sweet Spot groups the original color and five complimentary colors.



61.8293, 4.8307, 11.3166



92.1740, -1.5912, 8.5978



59.4523, 15.6685, -5.1488



43.0178, -0.5987, 4.1610



98.8636, -5.2751, 5.3714



45.2661, -2.4153, 2.4594

Same Dimension

The Same Dimension uses a secret algorithm to generate beautiful new colors.



61.8293, 4.8307, 11.3166



80.1898, 9.5894, 17.4307



67.8916, -5.5333, 17.2698



31.5731, -0.1517, 3.3468



30.2824, 35.8111, 19.2868



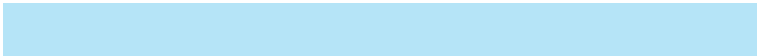
6.8919, 4.7230, 4.3295

Inverse Universe

The Inverse Universe completely reimagines the original color for something new.



64.6941, -9.9483, -4.9560



84.9352, -14.9480, -9.5493



58.4482, 0.2727, -13.3968



32.1499, -3.1179, 0.0746



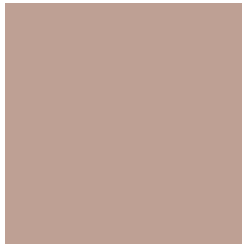
37.7667, -9.0171, -27.7398



8.1554, -2.7544, -4.2476

Previews

White Background



This preview shows how the HunterLab color 61.8279, 4.8328, 11.3157 looks on a white background.

Color Contrast Check

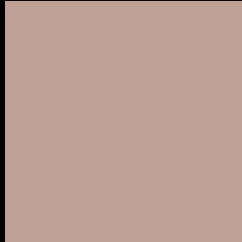
Large Text (above 18pt) WCAG AA × Fail

Any Text WCAG AA × Fail

Large Text (above 18pt) WCAG AAA × Fail

Any Text WCAG AAA × Fail

Black Background



This preview shows how the HunterLab color 61.8279, 4.8328, 11.3157 looks on a black background.

Color Contrast Check

Large Text (above 18pt) WCAG AA ✓ Pass

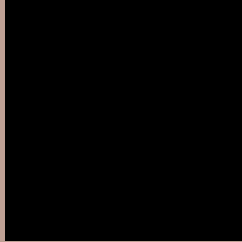
Any Text WCAG AA ✓ Pass

Large Text (above 18pt) WCAG AAA ✓ Pass

Any Text WCAG AAA ✓ Pass

If you want to check with other color combinations, try the [Color Contrast Checker](#).

HunterLab 61.8279, 4.8328, 11.3157 Background



This preview shows how black text looks on a background with the HunterLab color 61.8279, 4.8328, 11.3157.



This preview shows how white text looks on a background with the HunterLab color 61.8279, 4.8328,

Color Blindness Simulation

Color vision deficiency is a very complex topic, and I could not describe the different causes any better than Wikipedia does, so if you want to learn more, you should check out their [article about color blindness](#).

Dichromacy



Original Color

61.8279, 4.8328, 11.3157

Protanopia

61.9605, -3.4068, 10.1039

Deuteranopia

61.7240, 4.4849, 11.2004



Tritanopia

61.8999, 10.5141, 2.3730

Trichromacy



Original Color

61.8279, 4.8328, 11.3157

Protanomaly

61.9166, -0.6171, 10.5118

Deuteranomaly

61.7240, 4.4849, 11.2004

Tritanomaly

61.8332, 8.4133, 5.9172

Monochromacy



Original Color

61.8279, 4.8328, 11.3157

Achromatopsia

62.5758, -3.3389, 3.3999

Achromatomaly

62.2202, -0.4643, 6.2014

CSS Examples

Text

The CSS property to change the color of the text to HunterLab 61.8279, 4.8328, 11.3157 is called "color". The color property can be set on classes, ids or directly on the HTML element.

This example shows how text in the color `rgb(190, 160, 148)` looks like.

```
.text, #text, p{  
    color:rgb(190, 160, 148)  
}
```

If you want to add a text shadow in that color use the text-shadow property, you can generate a text shadow directly with our [CSS Text Shadow Generator](#).

Here you see how black text with a 4 pixel rgb(190, 160, 148) colored shadow looks like.

```
.shadow{ text-shadow: 4px 4px 2px rgb(190, 160, 148) }
```

Border

The CSS property to change the border of an element to HunterLab 61.8279, 4.8328, 11.3157 is called "border". The border property can be set on classes, ids or directly on the HTML element.

This example shows the color as border, it can be applied via the CSS property "border" or "border-color".

```
.border, #border, table{ border:4px solid rgb(190, 160, 148) }
```


If only the border color should be changed use the property border-color.

```
.border{ border-color:rgb(190, 160, 148) }
```

If you want to add a box shadow in that color use:

Here you see how a box with a 4 pixel rgb(190, 160, 148) colored shadow looks like.

```
.boxshadow{ -moz-box-shadow:4px 4px 4px  
4px rgb(190, 160, 148); -webkit-box-  
shadow:4px 4px 4px 4px rgb(190, 160, 148);  
box-shadow:4px 4px 4px 4px rgb(190, 160,  
148) }
```

Background

The CSS property to change the background color of an element to HunterLab 61.8279, 4.8328, 11.3157 is called "background". The background property can be set on classes, ids or directly on the HTML element.

```
.background, #background, body{  
background: rgb(190, 160, 148) }
```

If only the background color should be changed can be used:

```
.background{ background-color: rgb(190,  
160, 148) }
```

This example shows the color as background, it is applied via the CSS property "background".

To optimize and compress your CSS code, you can use our [online CSS compressor and optimizer](#) based on csstidy. If you want to create a linear or radial gradient as background or border, check our [CSS Gradient Generator](#).

Hey! You found this booklet interesting? Support Converting Colors with the new Membership Option!

The pro membership hides all ads, plus gives you double the colors in the color bucket, and more awesome pro features!

[Learn more, Memberships starting at \\$2.50/m!](#)

**Follow me
on Twitter!**

@ConvertingColor