

Converting Colors

HunterLab(61.9038, 5.7585,
12.6270)

Have a look what the booklet for
HunterLab(61.9038, 5.7585,
12.6270) contains.

HunterLab(61.7884, 5.9853, 12.4736)	3
<i>Conversions</i>	4
<i>Details</i>	6
<i>Harmonies</i>	12
<i>Previews</i>	24
<i>Color Blindness Simulation</i>	28
<i>CSS Examples</i>	31

Color

**HunterLab(61.7884, 5.9853,
12.4736)**

Conversions

Conversions Part 1

Format	Color
Hex	C19F91
RGB	193, 159, 145
RGB Percent	76%, 62%, 57%
CMY	0.2431, 0.3765, 0.4314
CMYK	0.00, 0.18, 0.25, 0.24
HSL	18°, 28%, 66%
HSV	18°, 25%, 76%
XYZ	39.5013, 38.1781, 32.0752
YIQ	167.5700, 24.7580, 2.8540

Conversions

Conversions Part 2

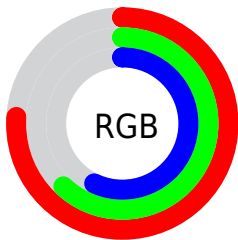
Format	Color
R _Y B	193, 165, 145
Decimal	12689297
CIE Lab	68.15, 10.41, 12.01
CIE LCh	68, 15.894, 49.103
Yxy	38.1798, 0.3599, 0.3479
Android (android.graphics.Color)	4290879377 (0xFFC19F91)
YUV	167.5700, -11.1270, 22.3021
Hunter-Lab	61.7884, 5.9853, 12.4736

Details

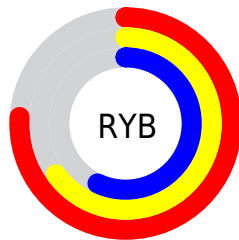
The HunterLab color **61.7884, 5.9853, 12.4736** is a light color, and the websafe version is hex **CC9999**. A complement of this color would be **64.8915, -10.6206, -6.2973**, and the grayscale version is **62.4368, -3.3315, 3.3923**.

A 20% lighter version of the original color is **85.1708, 5.5778, 14.9656**, and **41.2799, 5.9214, 9.9902** is the 20% darker color. If you saturate the color by 10%, you get **57.6105, 10.4631, 15.4722**, and if you desaturate by 10%, it is **66.1748, 1.8053, 9.2124**.

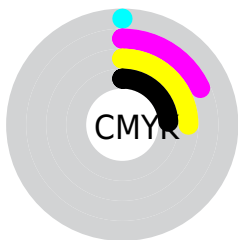
Distribution



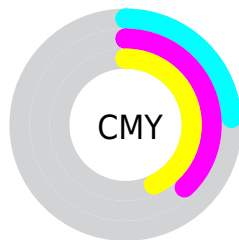
- Red (76%)
- Green (62%)
- Blue (57%)



- Red (76%)
- Yellow (65%)
- Blue (57%)



- Cyan (0%)
- Magenta (18%)
- Yellow (25%)
- Black (24%)



- Cyan (24%)
- Magenta (38%)
- Yellow (43%)

Brightness & Saturation Gradients

These gradients show how the HunterLab color 61.7884, 5.9853, 12.4736 changes by changing the brightness by 10 percent. The first figure shows a shift by +10% for each color and the second figure -10%.

Similar to the brightness gradients but the following saturation gradients show a change of the HunterLab color 61.7884, 5.9853, 12.4736 by changing the saturation by 10% instead.

■ 61.7884, 5.9853,
12.4736

■ 61.7884, 5.9853,
12.4736

183.9540, 3.3345,
23.7052

■ 51.1100, 6.0180,
11.2370

■ 85.0786, 5.7274,
14.9338

■ 41.1280, 5.9808,
9.9847

■ 97.6211, 5.5177,
16.1645

■ 31.8967, 5.8612,
8.7062

110.7257, 5.2590,
17.4000

■ 23.4829, 5.6447,
7.3826

124.3693, 4.9548,
18.6423

■ 15.9755, 5.3102,
5.9818

138.5314, 4.6080,
19.8929

■ 9.5010, 4.8252,
5.7595

153.1936, 4.2209,

0.0000, INF, NaN

21.1530

0.0000, NaN, NaN

168.3395, 3.7958,
22.4235

0.0000, NaN, NaN

■ 61.7884, 5.9853,
12.4736

■ 61.7884, 5.9853,
12.4736

■ 57.6105, 10.4631,
15.4722

■ 66.1748, 1.8053,
9.2124

■ 53.6643, 15.2574,
18.1486

■ 70.7419, -2.0923,
5.7312

■ 49.9834, 20.3607,
20.4346

■ 75.4713, -5.7351,
2.0668

■ 46.6038, 25.7381,
22.2505

■ 80.3459, -9.1496,
-1.7525

■ 43.5648, 31.3097,
23.5127

■ 85.3517, -12.3613,
-5.7049

■ 40.9065, 36.9358,
24.1493

■ 90.2665, -16.5691,
-6.8097

■ 38.6648, 42.4050,
24.1315

■ 94.8051, -23.3732,
-1.1573

■ 37.6772, 45.0271,
24.0048

■ 94.9092, -23.5260,
-1.0310

Harmonies

Analogous

The Analogous color harmony consists of three colors that are next to each other on the color wheel.



61.7898, 10.2680, 7.5016



61.7884, 5.9853, 12.4736



61.7898, -0.6735, 14.9010

Triad

The Triadic color harmony groups three colors that are evenly spaced from another and form a triangle on the color wheel.



61.7898, 5.9831, 12.4745



61.7898, -16.2584, 5.7906



61.7898, 1.2747, -10.3502

Complementary

The Complementary color scheme is a pair of colors which are on the opposite of each other on the color wheel.



61.7884, 5.9853, 12.4736



64.8915, -10.6206, -6.2973

Split Complementary

Split-complementary colors differ from the complementary color scheme. The scheme consists of three colors, the original color and two neighbors of the complement color.



61.7898, -5.8838, -10.9437



61.7884, 5.9853, 12.4736



61.7898, -15.7902, -1.0825

Square

The Square scheme is like the rectangle color scheme, but the four colors are evenly spaced on the color wheel.



61.7898, 5.9831, 12.4745



61.7898, -13.3756, 11.3451



61.7898, -12.0660, -7.3888



61.7898, 7.4651, -5.8493

Rectangle

The Rectangle color scheme consists of four colors that form a rectangle on the color wheel.



61.7884, 5.9853, 12.4736



61.7898, -5.4654, 14.9577



61.7898, -12.0660, -7.3888



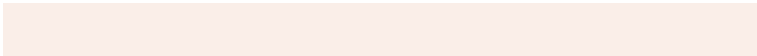
61.7898, -1.1048, -11.0311

Sweetspot

The Sweet Spot groups the original color and five complimentary colors.



61.7898, 5.9831, 12.4745



93.2841, -1.6627, 8.7362



59.0420, 18.5000, -6.3353



43.0340, -0.6263, 4.1790



98.8636, -5.2751, 5.3714



45.2661, -2.4153, 2.4594

Same Dimension

The Same Dimension uses a secret algorithm to generate beautiful new colors.



61.7898, 5.9831, 12.4745



79.5240, 11.3134, 18.9892



68.6180, -5.7400, 19.0347



32.4747, -0.1756, 3.4631



30.9246, 36.1506, 19.6885



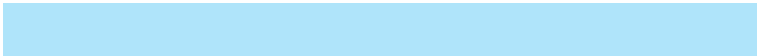
7.3196, 5.1634, 4.6007

Inverse Universe

The Inverse Universe completely reimagines the original color for something new.



64.8915, -10.6206, -6.2973



84.5599, -15.7214, -11.5268



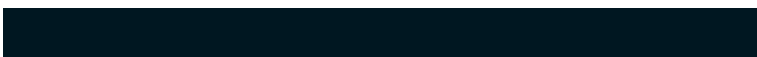
57.8330, 0.9273, -16.0707



33.0393, -3.1854, 0.0519



38.1395, -8.7338, -28.8173



8.6176, -2.8058, -4.7144

Previews

White Background



This preview shows how the HunterLab color 61.7884, 5.9853, 12.4736 looks on a white background.

Color Contrast Check

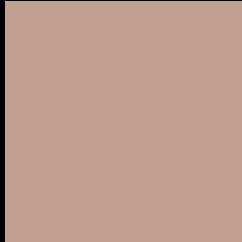
Large Text (above 18pt) WCAG AA × Fail

Any Text WCAG AA × Fail

Large Text (above 18pt) WCAG AAA × Fail

Any Text WCAG AAA × Fail

Black Background



This preview shows how the HunterLab color 61.7884, 5.9853, 12.4736 looks on a black background.

Color Contrast Check

Large Text (above 18pt) WCAG AA ✓ Pass

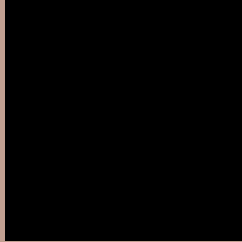
Any Text WCAG AA ✓ Pass

Large Text (above 18pt) WCAG AAA ✓ Pass

Any Text WCAG AAA ✓ Pass

If you want to check with other color combinations, try the [Color Contrast Checker](#).

HunterLab 61.7884, 5.9853, 12.4736 Background



This preview shows how black text looks on a background with the HunterLab color 61.7884, 5.9853, 12.4736.



This preview shows how white text looks on a background with the HunterLab color 61.7884, 5.9853,

Color Blindness Simulation

Color vision deficiency is a very complex topic, and I could not describe the different causes any better than Wikipedia does, so if you want to learn more, you should check out their [article about color blindness](#).

Dichromacy



Original Color

61.7884, 5.9853, 12.4736

Protanopia

61.8828, -3.8330, 11.2217

Deuteranopia

61.7520, 4.4268, 12.4087



Tritanopia

61.9192, 11.9152, 2.8901

Trichromacy



Original Color

61.7884, 5.9853, 12.4736

Protanomaly

61.6476, -0.2115, 11.4352

Deuteranomaly

61.8565, 4.7771, 12.5228

Tritanomaly

61.8499, 9.8234, 6.4024

Monochromacy



Original Color

61.7884, 5.9853, 12.4736

Achromatopsia

62.5758, -3.3389, 3.3999

Achromatomaly

62.2860, -0.2952, 6.7172

CSS Examples

Text

The CSS property to change the color of the text to HunterLab 61.7884, 5.9853, 12.4736 is called "color". The color property can be set on classes, ids or directly on the HTML element.

This example shows how text in the color `rgb(193, 159, 145)` looks like.

```
.text, #text, p{  
    color:rgb(193, 159, 145)  
}
```

If you want to add a text shadow in that color use the text-shadow property, you can generate a text shadow directly with our [CSS Text Shadow Generator](#).

Here you see how black text with a 4 pixel rgb(193, 159, 145) colored shadow looks like.

```
.shadow{ text-shadow: 4px 4px 2px rgb(193, 159, 145) }
```

Border

The CSS property to change the border of an element to HunterLab 61.7884, 5.9853, 12.4736 is called "border". The border property can be set on classes, ids or directly on the HTML element.

This example shows the color as border, it can be applied via the CSS property "border" or "border-color".

```
.border, #border, table{ border:4px solid rgb(193, 159, 145) }
```


If only the border color should be changed use the property `border-color`.

```
.border{ border-color:rgb(193, 159, 145) }
```

If you want to add a box shadow in that color use:

Here you see how a box with a 4 pixel `rgb(193, 159, 145)` colored shadow looks like.

```
.boxshadow{ -moz-box-shadow:4px 4px 4px  
4px rgb(193, 159, 145); -webkit-box-  
shadow:4px 4px 4px 4px rgb(193, 159, 145);  
box-shadow:4px 4px 4px 4px rgb(193, 159,  
145) }
```

Background

The CSS property to change the background color of an element to HunterLab 61.7884, 5.9853, 12.4736 is called "background". The background property can be set on classes, ids or directly on the HTML element.

```
.background, #background, body{  
background: rgb(193, 159, 145) }
```

If only the background color should be changed can be used:

```
.background{ background-color: rgb(193,  
159, 145) }
```

This example shows the color as background, it is applied via the CSS property "background".

To optimize and compress your CSS code, you can use our [online CSS compressor and optimizer](#) based on csstidy. If you want to create a linear or radial gradient as background or border, check our [CSS Gradient Generator](#).

Hey! You found this booklet interesting? Support Converting Colors with the new Membership Option!

The pro membership hides all ads, plus gives you double the colors in the color bucket, and more awesome pro features!

[Learn more, Memberships starting at \\$2.50/m!](#)

**Follow me
on Twitter!**

@ConvertingColor