

# Converting Colors

HunterLab(61.9067, 4.4690,  
5.0392)

Have a look what the booklet for  
HunterLab(61.9067, 4.4690, 5.0392)  
contains.

<b>HunterLab(61.9067, 4.4690, 5.0392)</b> .....	3
<i><b>Conversions</b></i> .....	4
<i><b>Details</b></i> .....	6
<i><b>Harmonies</b></i> .....	12
<i><b>Previews</b></i> .....	24
<i><b>Color Blindness Simulation</b></i> .....	28
<i><b>CSS Examples</b></i> .....	31

# Color

**HunterLab(61.9067, 4.4690,  
5.0392)**

# Conversions

## Conversions Part 1

Format	Color
Hex	B8A1A3
RGB	184, 161, 163
RGB Percent	72%, 63%, 64%
CMY	0.2784, 0.3686, 0.3608
CMYK	0.00, 0.12, 0.11, 0.28
HSL	355°, 14%, 68%
HSV	355°, 12%, 72%
XYZ	39.1229, 38.3244, 39.9856
YIQ	168.1050, 13.0660, 5.4980

# Conversions

## Conversions Part 2

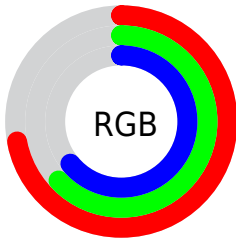
<b>Format</b>	<b>Color</b>
<b>RYB</b>	184, 161, 163
Decimal	12100003
CIELab	68.26, 8.75, 2.05
CIElCh	68, 8.986, 13.207
Yxy	38.3261, 0.3331, 0.3264
Android (android.graphics.Color)	4290290083 (0xFFB8A1A3)
YUV	168.1050, -2.5168, 13.9399
Hunter-Lab	61.9067, 4.4690, 5.0392

# Details

The HunterLab color **61.9067, 4.4690, 5.0392** is a light color, and the websafe version is hex **999999**. A complement of this color would be **67.2580, -10.7910, 2.2402**, and the grayscale version is **62.6265, -3.3416, 3.4026**.

A 20% lighter version of the original color is **85.2637, 3.9200, 6.4839**, and **41.1221, 4.8584, 3.7411** is the 20% darker color. If you saturate the color by 10%, you get **56.3900, 11.2674, 6.2666**, and if you desaturate by 10%, it is **67.7350, -2.0920, 3.9967**.

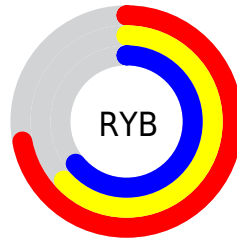
# Distribution



Red (72%)

Green (63%)

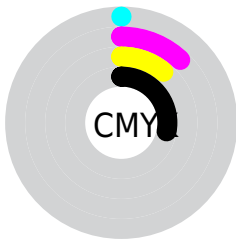
Blue (64%)



Red (72%)

Yellow (63%)

Blue (64%)

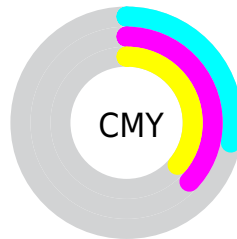


Cyan (0%)

Magenta (12%)

Yellow (11%)

Black (28%)



Cyan (28%)

Magenta (37%)

Yellow (36%)

# Brightness & Saturation Gradients

These gradients show how the HunterLab color 61.9067, 4.4690, 5.0392 changes by changing the brightness by 10 percent. The first figure shows a shift by +10% for each color and the second figure -10%.

Similar to the brightness gradients but the following saturation gradients show a change of the HunterLab color 61.9067, 4.4690, 5.0392 by changing the saturation by 10% instead.



■ 61.9067, 4.4690,  
5.0392

■ 61.9067, 4.4690,  
5.0392

184.1241, 1.2078,  
12.4422

■ 51.2210, 4.5856,  
4.3533

■ 85.2101, 4.0565,  
6.5014

■ 41.2313, 4.6372,  
3.6966

■ 97.7588, 3.7744,  
7.2737

■ 31.9916, 4.6123,  
3.0713

110.8693, 3.4462,  
8.0727

■ 23.5686, 4.4978,  
2.4781

124.5186, 3.0751,  
8.8976

■ 16.0509, 4.2745,  
1.9169

138.6862, 2.6636,  
9.7477

■ 9.5644, 3.9117,  
1.4124

153.3537, 2.2139,

0.0000, INF, NaN

10.6222

0.0000, NaN, NaN

168.5046, 1.7281,  
11.5206

0.0000, NaN, NaN

■ 61.9067, 4.4690,  
5.0392

■ 61.9067, 4.4690,  
5.0392

■ 56.3900, 11.2674,  
6.2666

■ 67.7350, -2.0920,  
3.9967

■ 51.2372, 18.2958,  
7.6994

■ 73.8258, -8.4240,  
3.1107

■ 46.5202, 25.4858,  
9.3531

■ 80.1448, -14.5541,  
2.3586

■ 42.3239, 32.6777,  
11.2201

■ 86.6637, -20.5106,  
1.7197

■ 38.7447, 39.5720,  
13.2508

■ 93.3597, -26.3210,  
1.1765

■ 35.8796, 45.7075,  
15.3338

■ 94.3029, -25.7603,  
-1.8236

■ 33.8037, 50.5215,  
17.2916

■ 32.5360, 53.5458,  
18.9169

■ 31.9809, 54.8850,  
19.7603

# Harmonies

## Analogous

The Analogous color harmony consists of three colors that are next to each other on the color wheel.



61.9081, 4.3348, 1.1887



61.9067, 4.4690, 5.0392



61.9081, 2.4787, 8.2350

# Triad

The Triadic color harmony groups three colors that are evenly spaced from another and form a triangle on the color wheel.



61.9081, 4.4672, 5.0402



61.9081, -8.5538, 8.5351



61.9081, -5.5428, -4.1584

# Complementary

The Complementary color scheme is a pair of colors which are on the opposite of each other on the color wheel.



61.9067, 4.4690, 5.0392



67.2580, -10.7910, 2.2402

# Split Complementary

Split-complementary colors differ from the complementary color scheme. The scheme consists of three colors, the original color and two neighbors of the complement color.



61.9081, -8.8869, -1.9253



61.9067, 4.4690, 5.0392



61.9081, -10.5944, 5.4743

# Square

The Square scheme is like the rectangle color scheme, but the four colors are evenly spaced on the color wheel.



61.9081, 4.4672, 5.0402



61.9081, -5.0775, 10.1635



61.9081, -10.7147, 1.6515



61.9081, -1.5155, -4.2933



# Rectangle

The Rectangle color scheme consists of four colors that form a rectangle on the color wheel.



61.9067, 4.4690, 5.0392



61.9081, 0.2468, 9.6307



61.9081, -10.7147, 1.6515



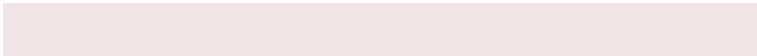
61.9081, -6.7816, -3.6220

# Sweetspot

The Sweet Spot groups the original color and five complimentary colors.



61.9081, 4.4672, 5.0402



89.9417, -1.4520, 5.5866



62.3384, 7.2146, -4.5914



41.4830, -0.3699, 2.6404



96.5975, -5.1542, 5.2483



43.2801, -2.3093, 2.3515



# Same Dimension

The Same Dimension uses a secret algorithm to generate beautiful new colors.



61.9081, 4.4672, 5.0402



81.2625, 8.5026, 7.2147



64.4898, -0.4439, 8.7292



30.0409, 1.1161, 2.2119



26.5584, 45.5965, 16.2747



5.0291, 8.7186, 2.4271



# Inverse Universe

The Inverse Universe completely reimagines the original color for something new.



61.9081, 4.4672, 5.0402



81.2625, 8.5026, 7.2147



64.5145, -5.9847, -2.0267



30.0409, 1.1161, 2.2119



26.5584, 45.5965, 16.2747



5.0291, 8.7186, 2.4271



# Previews

## White Background



This preview shows how the HunterLab color 61.9067, 4.4690, 5.0392 looks on a white background.

## Color Contrast Check

Large Text (above 18pt) WCAG AA × Fail

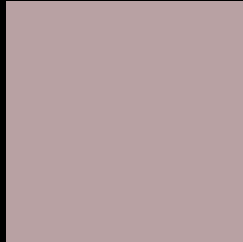
Any Text WCAG AA × Fail

Large Text (above 18pt) WCAG AAA × Fail

Any Text WCAG AAA × Fail



# Black Background



This preview shows how the HunterLab color 61.9067, 4.4690, 5.0392 looks on a black background.

## Color Contrast Check

Large Text (above 18pt) WCAG AA ✓ Pass

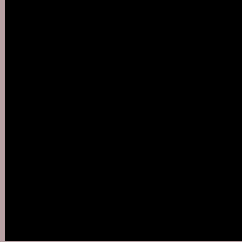
Any Text WCAG AA ✓ Pass

Large Text (above 18pt) WCAG AAA ✓ Pass

Any Text WCAG AAA ✓ Pass

If you want to check with other color combinations, try the [Color Contrast Checker](#).

## HunterLab 61.9067, 4.4690, 5.0392 Background



This preview shows how black text looks on a background with the HunterLab color 61.9067, 4.4690, 5.0392.



This preview shows how white text looks on a background with the HunterLab color 61.9067, 4.4690,



# Color Blindness Simulation

Color vision deficiency is a very complex topic, and I could not describe the different causes any better than Wikipedia does, so if you want to learn more, you should check out their [article about color blindness](#).

## Dichromacy



### Original Color

61.9067, 4.4690, 5.0392

### Protanopia

62.1061, -2.0654, 3.7927

### Deuteranopia

61.9067, 4.4690, 5.0392



## Tritanopia

61.9955, 6.7488, 0.9931

# Trichromacy



## Original Color

61.9067, 4.4690, 5.0392

## Protanomaly

61.9528, 0.3379, 4.1136

## Deuteranomaly

61.9067, 4.4690, 5.0392

## Tritanomaly

61.9035, 6.2593, 2.3029

# Monochromacy



## Original Color

61.9067, 4.4690, 5.0392

## Achromatopsia

62.5758, -3.3389, 3.3999

## Achromatomaly

62.1789, -0.3169, 3.9085

# CSS Examples

## Text

The CSS property to change the color of the text to HunterLab 61.9067, 4.4690, 5.0392 is called "color". The color property can be set on classes, ids or directly on the HTML element.

This example shows how text in the color `rgb(184, 161, 163)` looks like.

```
.text, #text, p{  
    color:rgb(184, 161, 163)  
}
```

If you want to add a text shadow in that color use the text-shadow property, you can generate a text shadow directly with our [CSS Text Shadow Generator](#).

Here you see how black text with a 4 pixel rgb(184, 161, 163) colored shadow looks like.

```
.shadow{ text-shadow: 4px 4px 2px rgb(184, 161, 163) }
```

## Border

The CSS property to change the border of an element to HunterLab 61.9067, 4.4690, 5.0392 is called "border". The border property can be set on classes, ids or directly on the HTML element.

This example shows the color as border, it can be applied via the CSS property "border" or "border-color".

```
.border, #border, table{ border:4px solid rgb(184, 161, 163) }
```



If only the border color should be changed use the property `border-color`.

```
.border{ border-color:rgb(184, 161, 163) }
```

If you want to add a box shadow in that color use:

Here you see how a box with a 4 pixel `rgb(184, 161, 163)` colored shadow looks like.

```
.boxshadow{ -moz-box-shadow:4px 4px 4px  
4px rgb(184, 161, 163); -webkit-box-  
shadow:4px 4px 4px 4px rgb(184, 161, 163);  
box-shadow:4px 4px 4px 4px rgb(184, 161,  
163) }
```

# Background

The CSS property to change the background color of an element to HunterLab 61.9067, 4.4690, 5.0392 is called "background". The background property can be set on classes, ids or directly on the HTML element.

```
.background, #background, body{  
background: rgb(184, 161, 163) }
```

If only the background color should be changed can be used:

```
.background{ background-color: rgb(184,  
161, 163) }
```

This example shows the color as background, it is applied via the CSS property "background".

To optimize and compress your CSS code, you can use our [online CSS compressor and optimizer](#) based on csstidy. If you want to create a linear or radial gradient as background or border, check our [CSS Gradient Generator](#).

Hey! You found this booklet interesting? Support Converting Colors with the new Membership Option!

The pro membership hides all ads, plus gives you double the colors in the color bucket, and more awesome pro features!

**[Learn more, Memberships starting at \\$2.50/m!](#)**

**Follow me  
on Twitter!**

@ConvertingColor